



Philips Brilliance
LCD monitor, LED
backlight with
PowerSensor

B Line
24" (61 cm)
Full HD display

Brilliance

241B4LPYCS



Sustainable eco design display

with PowerSensor saves energy bills

The Philips PowerSensor LED display using 65% post consumer recycled plastics and PVC, BFR free housing is ideal for eco-friendly productivity

Sustainable Eco-design

- PowerSensor saves up to 80% energy costs
- Zero power consumption with 0 watt hard switch
- 65% post consumer recycled plastics with TCO Edge
- PVC-BFR free housing

Excellent performance

- LED technology ensures natural colors
- DisplayPort offers audio and video over a single, long cable
- Built-in stereo speakers for multimedia

Designed for people

- SmartErgoBase enables people-friendly ergonomic adjustments
- Low bezel-to-table height for maximum reading comfort

Easy to experience

- SmartImage presets for easy optimized image settings
- USB Hub with 2 ports for easy connections

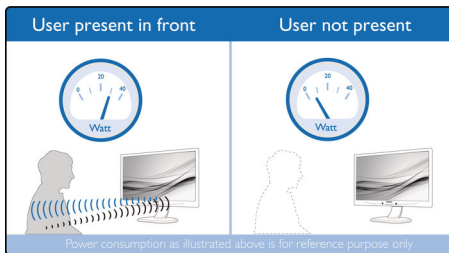
PHILIPS

Highlights

LED technology

White LED's are solid state devices which light up to full, consistent brightness faster saving startup time. LED's are free from mercury content which allows for eco-friendly recycling and disposal process. LED's allow for better dimming control of LCD backlight, resulting in super high contrast ratio. It also gives superior color reproduction thanks to consistent brightness across the screen.

PowerSensor



PowerSensor is a built-in 'people sensor' that transmits and receives harmless infrared signals to determine if user is present and automatically reduces monitor brightness when user steps away from the desk, cutting energy costs by up to 80 percent and prolonging monitor life

DisplayPort

DisplayPort is a digital link from PC to Monitor without any conversion. With higher capabilities than DVI standard, it is fully capable to support up to 15meter cables and 10.8 Gbps/sec data transfer. With this high performance and zero latency, you get the fastest imaging and refresh rates - making DisplayPort the best choice for not only general office or home use, but also for the demanding gaming and movies, video editing and more. It also keeps interoperability in mind via use of various adapters.

SmartErgoBase



The SmartErgoBase is a monitor base that delivers ergonomic display comfort and provides cable management. The base's people-friendly height, swivel, tilt and rotation angle adjustments position the monitor for maximum comfort that can ease the physical strains of a long workday; cable management reduces cable clutter and keeps the workspace neat and professional.

Low bezel-to-table height



The Philips monitor, thanks to its advanced SmartErgoBase, can be lowered down almost to desk level for a comfortable viewing angle. Low bezel-to-table height is the perfect solution if you use bifocals, trifocals or progressive lens glasses for your computing work. Additionally, it allows for users with greatly different heights to use the monitor in their preferred angle and height settings, helping them reduce fatigue and strain.

Built-in stereo speakers

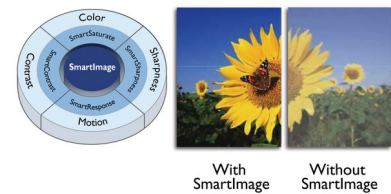
A pair of high quality stereo speakers built into a display device. It can be visible front firing, or invisible down firing, top firing, rear firing, etc depending on model and design.

2 Ports USB 2.0 HUB

USB Hub allows user to conveniently connect their plug and play multimedia devices such as USB memory devices, camera, portable HDD, Web camera, PDA, Printer and many other devices which has USB connection available.

The conveniently located USB 2.0 Hub on the monitor allows USB 2.0 signals to pass thru to the computer. Note that many devices like cameras and HDD may need to be powered On independently, as they have higher power requirements than the monitor USB Hub can provide.

SmartImage



SmartImage is an exclusive leading edge Philips technology that analyzes the content displayed on your screen and gives you optimized display performance. This user friendly interface allows you to select various modes like Office, Photo, Movie, Game, Economy etc., to fit the application in use. Based on the selection, SmartImage dynamically optimizes the contrast, color saturation and sharpness of images and videos for ultimate display performance. The Economy mode option offers you major power savings. All in real time with the press of a single button!

TCO Edge

TCO Edge certification is given to products which go beyond existing eco-labeling programs. Over and above standard TCO requirements, it further mandates that the product uses minimum 65% of post consumer recycled plastics, is energy efficient, uses minimal hazardous materials, has 100% recyclable packaging, and is designed for easy recycling amongst other requirements. You can rest assured that this Philips monitor is a cutting edge technology product which is best in class ICT, benefitting you and the planet while helping you make a responsible green IT purchase!

PVC-BFR free housing

This Philips monitor housing is free from brominated flame retardant and polyvinyl chloride (PVC-BFR free)



Specifications

Picture/Display

- LCD panel type: TFT-LCD
- Backlight type: W-LED system
- Panel Size: 24 inch / 61 cm
- Effective viewing area: 531.4 (H) x 298.9 (V)
- Aspect ratio: 16:9
- Optimum resolution: 1920 x 1080 @ 60Hz
- Response time (typical): 5 ms
- Brightness: 250 cd/m²
- Contrast ratio (typical): 1,000:1
- SmartContrast: 20,000,000 :1
- Pixel pitch: 0.276 x 0.276 mm
- Viewing angle: 170° (H) / 160° (V), @ C/R > 10
- Picture enhancement: SmartImage
- Display colors: 16.7 M
- Scanning Frequency: 30 - 83 kHz (H) / 56 - 75 Hz (V)
- sRGB

Connectivity

- Signal Input: DisplayPort, DVI-D (digital, HDCP), VGA (Analog)
- USB: USB 2.0 x 2
- Sync Input: Separate Sync, Sync on Green
- Audio (In/Out): PC audio-in, Headphone out

Convenience

- Built-in Speakers: 1.5Wx2
- User convenience: SmartImage, Volume, PowerSensor, Menu, Power On/Off
- Control software: SmartControl Premium
- OSD Languages: Brazil Portuguese, Czech, Dutch, English, Finnish, French, German, Greek, Hungarian, Italian, Japanese, Korean, Polish, Portuguese, Russian, Simplified Chinese, Spanish, Swedish, Traditional Chinese, Turkish, Ukrainian
- Other convenience: Kensington lock, VESA mount (100x100mm)
- Plug & Play Compatibility: DDC/CI, Mac OS X, sRGB, Windows 8/7/Vista

Stand

- Height adjustment: 110 mm
- Pivot: 90 degree
- Swivel: -65/+65 degree
- Tilt: -5/20 degree

Power

- ECO mode: 10 W (typ.)
- On mode: 16.34 W (typ.) (EnergyStar 7.0 test

method)

- Standby mode: 0.1W
- Off mode: Zero watts with Zero switch
- Power LED indicator: Operation - White, Standby mode- White (blinking)
- Power supply: Built-in, 100-240VAC, 50-60Hz

Dimensions

- Product with stand(max height): 565 x 514 x 227 mm
- Product without stand (mm): 565 x 353 x 61 mm
- Packaging in mm (WxHxD): 624 x 405 x 168 mm

Weight

- Product with stand (kg): 5.3 kg
- Product without stand (kg): 3.45 kg
- Product with packaging (kg): 7.03 kg

Operating conditions

- Temperature range (operation): 0°C to 40°C °C
- Temperature range (storage): -20°C to 60°C °C
- Relative humidity: 20%-80 %
- Altitude: Operation: +12,000ft (3,658m), Non-operation: +40,000ft (12,192m)
- MTBF: 30,000 hour(s)

Sustainability

- Environmental and energy: EnergyStar 7.0, PowerSensor, EPEAT Gold*, TCO edge, RoHS
- Recyclable packaging material: 100 %
- Post consumer recycled plastic: 65%
- Specific Substances: PVC / BFR free housing, Mercury free, Lead free

Compliance and standards

- Regulatory Approvals: BSMI, CE Mark, cETLus, FCC Class B, GOST, SASO, SEMKO, TUV Ergo, TUV/GS, WEEE, TCO certified

Cabinet

- Front bezel: Silver
- Rear cover: Black
- Foot: Silver
- Finish: Texture

What's in the box?

- Monitor with stand
- Cables: VGA, DVI, Audio, Power
- User Documentation



Issue date 2018-08-28

Version: 6.1.3

12 NC: 8670 000 80787
EAN: 87 12581 61771 4

© 2018 Koninklijke Philips N.V.
All Rights reserved.

Specifications are subject to change without notice.
Trademarks are the property of Koninklijke Philips N.V.
or their respective owners.

www.philips.com

* EPEAT Gold or Silver is valid only where Philips registers the product. Please visit www.epeat.net for registration status in your country.