



Philips Brilliance
AMVA LCD monitor, LED
backlight with Webcam

P Line
24" (61 cm)
Full HD display

Brilliance

241P4QPYKES



Sustainable eco design display

with Webcam saves time and money

The Philips AMVA LED display with Webcam helps you collaborate and communicate, saving your time and money.

Sustainable Eco-design

- PowerSensor saves up to 80% energy costs
- Zero power consumption with 0 watt hard switch
- 65% post consumer recycled plastics with TCO Edge
- PVC-BFR free housing

Brilliant performance

- AMVA LED for wide-view super-high contrast, vivid images
- Webcam to connect and collaborate
- Built-in microphone for audio conferencing
- DisplayPort offers audio and video over a single, long cable
- Built-in stereo speakers for multimedia
- USB Hub with 3 ports for easy connections

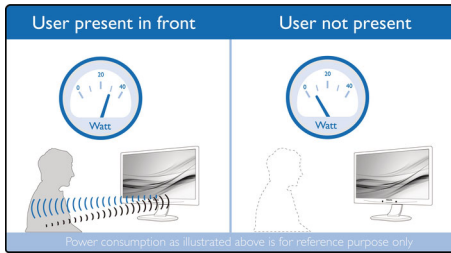
Designed for people

- SmartErgoBase enables people-friendly ergonomic adjustments
- Low bezel-to-table height for maximum reading comfort

PHILIPS

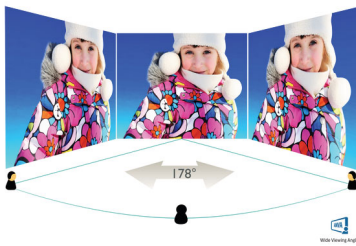
Highlights

PowerSensor



PowerSensor is a built-in 'people sensor' that transmits and receives harmless infrared signals to determine if user is present and automatically reduces monitor brightness when user steps away from the desk, cutting energy costs by up to 80 percent and prolonging monitor life

AMVA LED display



Philips AMVA LED display uses an advanced multi-domain vertical alignment technology which gives you super-high static contrast ratios for extra vivid and bright images. While standard office applications are handled with ease, it is especially suitable for photos, web-browsing, movies, gaming, and demanding graphical applications. Its optimized pixel management technology gives you 178/178 degree extra wide viewing angle, resulting in crisp images even in 90 degree pivot mode

Webcam

Embedded webcam and microphone enables you to view and communicate with your colleagues and clients. This simple solution allows you to collaborate and share, saving precious time and travel related costs.

DisplayPort

DisplayPort is a digital link from PC to Monitor without any conversion. With higher capabilities than DVI standard, it is fully capable

to support up to 15meter cables and 10.8 Gbps/sec data transfer. With this high performance and zero latency, you get the fastest imaging and refresh rates - making DisplayPort the best choice for not only general office or home use, but also for the demanding gaming and movies, video editing and more. It also keeps interoperability in mind via use of various adapters.

SmartErgoBase



The SmartErgoBase is a monitor base that delivers ergonomic display comfort and provides cable management. The base's people-friendly height, swivel, tilt and rotation angle adjustments position the monitor for maximum comfort that can ease the physical strains of a long workday; cable management reduces cable clutter and keeps the workspace neat and professional.

3 Ports USB 2.0 HUB

USB Hub allows user to conveniently connect their plug and play multimedia devices such as USB memory devices, camera, portable HDD, Web camera, PDA, Printer and many other devices which has USB connection available. The conveniently located USB 2.0 Hub on the monitor allows USB 2.0 signals to pass thru to the computer. Note that many devices like cameras and HDD may need to be powered On independently, as they have higher power requirements than the monitor USB Hub can provide.

Built-in stereo speakers

A pair of high quality stereo speakers built into a display device. It can be visible front firing, or invisible down firing, top firing, rear firing, etc depending on model and design.

Low bezel-to-table height



The Philips monitor, thanks to its advanced SmartErgoBase, can be lowered down almost to desk level for a comfortable viewing angle. Low bezel-to-table height is the perfect solution if you use bifocals, trifocals or progressive lens glasses for your computing work. Additionally, it allows for users with greatly different heights to use the monitor in their preferred angle and height settings, helping them reduce fatigue and strain.

TCO Edge

TCO Edge certification is given to products which go beyond existing eco-labeling programs. Over and above standard TCO requirements, it further mandates that the product uses minimum 65% of post consumer recycled plastics, is energy efficient, uses minimal hazardous materials, has 100% recyclable packaging, and is designed for easy recycling amongst other requirements. You can rest assured that this Philips monitor is a cutting edge technology product which is best in class ICT, benefitting you and the planet while helping you make a responsible green IT purchase!

PVC-BFR free housing

This Philips monitor housing is free from brominated flame retardant and polyvinyl chloride (PVC-BFR free)

Zero power consumption

At the flick of the 0 watt hard switch which is conveniently located at the back, you can completely cut-off your monitor from AC power. This results in zero power consumption reducing your carbon footprint even further



Webcam



PowerSensor



Wide Viewing Angle



LED



Wide Viewing Angle



D



SmartErgoBase



Built-in speakers



USB 3x

Specifications

Picture/Display

- LCD panel type: AMVA LCD
- Backlight type: W-LED system
- Panel Size: 24 inch / 61 cm
- Effective viewing area: 531.4 (H) x 298.9 (V)
- Aspect ratio: 16:9
- Optimum resolution: 1920 x 1080 @ 60Hz
- Response time (typical): 4 ms (Gray to Gray)*
- Brightness: 250 cd/m²
- Contrast ratio (typical): 5000:1
- SmartContrast: 20,000,000 :1
- Pixel pitch: 0.276 x 0.276 mm
- Viewing angle: 178° (H) / 178° (V), @ C/R > 10
- Picture enhancement: SmartImage
- Display colors: 16.7 M
- Scanning Frequency: 30 - 83 kHz (H) / 56 - 75 Hz (V)
- sRGB

Connectivity

- Signal Input: DisplayPort, DVI-D (digital, HDCP), VGA (Analog)
- USB: USB 2.0 x 3
- Sync Input: Separate Sync, Sync on Green
- Audio (In/Out): PC audio-in, Microphone, Headphone out

Convenience

- Built-in Speakers: 1.5Wx2
- Built-in webcam: 2.0 megapixel camera with microphone and LED indicator
- User convenience: SmartImage, Volume, PowerSensor, Menu, Power On/Off
- Control software: SmartControl Premium
- OSD Languages: Brazil Portuguese, Czech, Dutch, English, Finnish, French, German, Greek, Hungarian, Italian, Japanese, Korean, Polish, Portuguese, Russian, Simplified Chinese, Spanish, Swedish, Traditional Chinese, Turkish, Ukrainian
- Other convenience: Kensington lock, VESA mount (100x100mm)
- Plug & Play Compatibility: DDC/CI, Mac OS X, sRGB, Windows 8/7/Vista

Stand

- Height adjustment: 130 mm
- Pivot: 90 degree
- Swivel: -65/+65 degree
- Tilt: -5/20 degree

Power

- ECO mode: 15 W (typ.)

- On mode: 21.6 W (typ.) (EnergyStar 6.0 test method)
- Standby mode: 0.1W
- Off mode: Zero watts with Zero switch
- Power LED indicator: Operation - White, Standby mode- White (blinking)
- Power supply: Built-in, 100-240VAC, 50-60Hz

Dimensions

- Product with stand(max height): 565 x 521 x 220 mm
- Product without stand (mm): 565 x 353 x 61 mm
- Packaging in mm (WxHxD): 626 x 422 x 273 mm

Weight

- Product with stand (kg): 5.30 kg
- Product without stand (kg): 3.10 kg
- Product with packaging (kg): 7.93 kg

Operating conditions

- Temperature range (operation): 0°C to 40°C °C
- Temperature range (storage): -20°C to 60°C °C
- Relative humidity: 20%-80 %
- Altitude: Operation: +12,000ft (3,658m), Non-operation: +40,000ft (12,192m)
- MTBF: 30,000 hour(s)

Sustainability

- Environmental and energy: EnergyStar 6.0, PowerSensor, EPEAT Gold*, TCO edge, RoHS
- Recyclable packaging material: 100 %
- Post consumer recycled plastic: 65%
- Specific Substances: PVC / BFR free housing, Mercury free, Lead free

Compliance and standards

- Regulatory Approvals: BSMI, CE Mark, cETLus, FCC Class B, GOST, SASO, SEMKO, TCO 6.0, TUV Ergo, TUV/GS, WEEE

Cabinet

- Front bezel: Silver
- Rear cover: Black
- Foot: Black
- Finish: Texture

What's in the box?

- Monitor with stand
- Cables: VGA, DVI, DP, Audio, USB, Power
- User Documentation



Issue date 2018-08-28

Version: 7.0.2

12 NC: 8670 000 87357
EAN: 87 12581 63604 3

© 2018 Koninklijke Philips N.V.
All Rights reserved.

Specifications are subject to change without notice.
Trademarks are the property of Koninklijke Philips N.V.
or their respective owners.

www.philips.com

* EPEAT Gold or Silver is valid only where Philips registers the product. Please visit www.epeat.net for registration status in your country.

* Response time value equal to SmartResponse