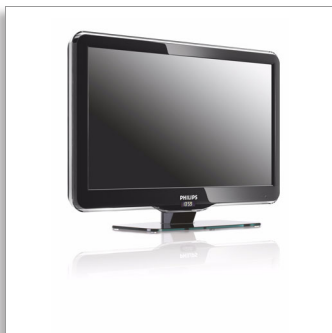




Philips
Professional LCD TV

66 cm/26" Ultimate HD
LCD
DVB-T/C MPEG4*



26HFL5870D

The ultimate movie experience

Philips Ultimate HD Hospitality LCD TV

This stylish Ultimate HD Hospitality TV offers an end-to-end interactive digital HD solution without the need for a set top box. You can offer your guests a real HD cinema solution which completes the in room experience of your guest.

Integrated system solution and future proof

- HD LCD display, with a 1366 x 768p resolution
- Tamper proof SmartCard slot
- Remote software upgrading

Differentiating guest experience

- Integrated clock display with wake up and message alarm
- Theme TV for easy finding of guests' own channels
- Pixel Plus HD for better details, depth and clarity
- Philips Connectivity Panel compatible to enjoy guest devices

Best total cost of ownership

- End-to-end cost optimized solution
- VSecure and VTrack for HD content security in hotels

Sustainable and safe

- SmartPower for energy saving
- Eco-friendly design & flame retardant housing

PHILIPS

Highlights

HD LCD display

This WXGA display with state-of-the-art LCD screen technology gives your guests widescreen HD resolution of 1366 x 768p pixels. It produces brilliant flicker-free progressive scan pictures with optimum brightness and superb colors. This vibrant and sharp image will provide your guests with an enhanced viewing experience.

Integrated SmartCard Slot

The integrated SmartCard slot allows third parties to add new functionality to the TV through application cards, without the need for additional boxes and external connections. The TV can also be connected to external decoders and set-top boxes of all major interactive system providers, through the SerialXpress Control Interface (supporting UART and RS232 protocols) and the SmartPlug Control interface.

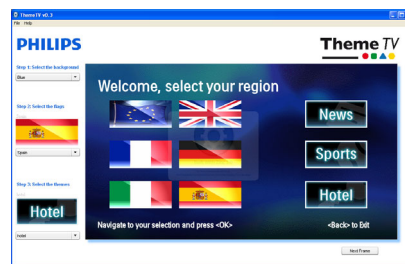
Remote software upgrading

The TV software that controls hotel-specific features can be upgraded remotely through a certified system provider.

Integrated clock display

The built-in clock display, which is also a wake-up alarm, eliminates the need and investment for an additional clock with cables and connections in the room.

Theme TV



Theme TV offers an advanced user interface that gives your guests the opportunity to navigate in the guest menu to find their own country channels, news and hotel information easily without the need of an interactive entertainment system.

Pixel Plus HD



Pixel Plus HD is a picture processing technology that enables viewers to watch content that is vivid, natural, and real. The result means superbly life-like pictures with incredible details and depth from any HD source.

Connectivity Panel compatible

This TV works seamlessly with Philips Connectivity Panels. The guest can easily connect and enjoy media from a PC, MP3 player, DVD player, camcorder and various other devices. With autosensing the

Connectivity Panel and the TV will automatically switch to display the content from the connected guest device.

End-to-end cost optimization

With the Philips Ultimate HD Hospitality TV you are able to show high definition premium content to your guest without the need for a set top box in the room. This TV ensures you of an end-to-end cost optimized solution as it includes all necessary HD requirements like MPEG 4 reception via DVB-T and/or DVB-C tuner with content protection.

VSecure & VTrack

To show HD premium content to the guest there is a need for strict content security precautions from the content industry. Philips developed a total solution for HD content security in hotels, consisting of VSecure for HD content protection and VTrack for HD forensic watermarking.

Eco-friendly design

Sustainability is integral to the way Philips does business. Philips TVs are designed and produced according to our EcoDesign principles aimed at minimizing overall environmental impact, through lower power consumption, removal of hazardous substances, lower weight, more efficient packaging and better recyclability. Philips TVs also have a special housing of flame retardant material. Independent tests carried out by emergency fire services have shown that whereas TVs can sometimes intensify fires caused by external sources, Philips TVs will not contribute to the fire.

Specifications

Picture/Display

- Diagonal screen size: 26 inch / 66 cm
- Peak Luminance ratio: 100 %
- Aspect ratio: 16:9, Widescreen
- Display screen type: LCD WXGA Active Matrix TFT
- Panel resolution: 1366 x 768p
- Brightness: 450 cd/m²
- Contrast ratio (typical): 2500:1
- Response time (typical): 6 ms
- Picture enhancement: 3/2 - 2/2 motion pull down, 3D Combfilter, Active Control, Black stretch, Blue stretch, Color Enhancement, Color Transient Improvement, Digital Noise Reduction, Luminance Transient Improver, Motion adaptive de-interlacing, Progressive scan, Automatic skin tone correction, Dynamic contrast enhancement, White stretch, Green stretch, Pixel Plus HD
- Dynamic screen contrast: 30000:1
- Screen enhancement: Anti-Reflection coated screen
- Viewing angle (H / V): 176 / 176 degree
- Color cabinet: Black

Supported Display Resolution

Video formats

Resolution	Refresh rate
480i	60Hz
480p	60Hz
576i	50Hz
576p	50Hz
1080i	50, 60Hz
720p	50, 60Hz

Computer formats

Resolution	Refresh rate
640 x 480	60Hz
800 x 600	60Hz
1024 x 768	60Hz
1280 x 1024	60Hz
1366 x 768	60Hz

Tuner/Reception/Transmission

- Aerial Input: 75 ohm coaxial (IEC75)
- Number of Preset Channels: 250
- Tuner bands: Hyperband, S-Channel, UHF, VHF
- Tuner Display: PLL
- TV system: PAL I, PAL B/G, PAL D/K, SECAM B/G, SECAM D/K, SECAM L/L', DVB COFDM 2K/8K

- Video Playback: PAL, SECAM, NTSC
- Digital TV: DVB-C MPEG4*, DVB-T MPEG4*

Sound

- Output power (RMS): 2 x 5W
- Sound System: Mono, Stereo, Nicam Stereo, BBE, Dolby Digital (AC-3), Virtual Dolby Digital
- Sound Enhancement: Auto Volume Leveller, Incredible Surround, Smart Sound
- Equalizer: 5-bands

Loudspeakers

- Built-in speakers: 2

Connectivity

- Number of Scarts: 2
- Number of HDMI connections: 3
- Ext 1 Scart: Audio L/R, CVBS in/out, RGB
- Ext 2 Scart: Audio L/R, CVBS in/out
- Ext 3: Audio L/R in, YPbPr
- Ext 4: HDMI v1.3
- Ext 5: HDMI v1.3
- Front / Side connections: Audio L/R in, CVBS in, Headphone Out, S-video in, USB 2.0, HDMI v1.3
- Other connections: Analog audio Left/Right out, S/PDIF out (coaxial), Headphone out, PC-In VGA, Common Interface
- Connectivity Enhancements: Serial Xpress interface, SmartPlug Xpress Interface, RJ12 connector, RJ45 connector, SmartCard Expansion Slot, Fast Infrared loop through, HM-Link, External Loudspeaker connector, Power on scart, USB2.0, External Power 12V/10W
- EasyLink (HDMI-CEC): One touch play, System standby

Convenience

- Ease of Installation: Advanced Hotel Mode, Fine Tuning, PLL Digital Tuning, Program Name, Cloning of TV settings via USB, Installation menu locking, Security menu access, Keyboard lock-out
- Ease of Use: Auto Volume Leveller (AVL), 1 channel list analog/digital
- Comfort: Hotel Guest features, Auto power on, Welcome message, Message indicator, Switch on channel, Volume limitation
- Interactive hotel features: Connectivity panel compatible, Block automatic channel update, Block over-the-air SW download, ThemeTV

- Prison mode: Teletext and MHEG disable
- Clock: Integrated LCD Clock Display, Sleep Timer, Wake up Clock, Dimmable
- Clock Enhancements: Synchro Time via TXT/DVB
- Teletext: 1000 page Smart Text
- Teletext languages: Western European, Eastern European, Cyrillic
- Electronic Program Guide: Now + Next EPG
- Screen Format Adjustments: 4:3, Full screen, Movie expand 14:9, Movie expand 16:9, Widescreen, Subtitle Zoom, Super Zoom, Auto Format
- Firmware upgradeable: Remote upgrade hotel TV softw, Firmware upgradeable via USB, Firmware upgradeable via RF
- Other convenience: Kensington lock
- Embedded (HD) content security: VSecure, VTrack

Healthcare

- Control: Multi remote control, Pendant control via IR-link
- Convenience: Headphone out, Independent main speaker mute
- Safety: Double isolation Class II

Multimedia Applications

- Multimedia connections: USB
- Playback Formats: MP3, JPEG Still pictures, Slideshow files (.alb)

Power

- Mains power: 220 - 240V, 50/60Hz
- Presence of lead: Yes*
- Mercury content: 46 mg
- Annual energy consumption: 138 kWh
- Power consumption: 120 W
- Standby power consumption: < 2 W (w. clock)
- Passive stand-by consumption: 1.2 W
- Active stand-by consumption: 20 W
- Ambient temperature: 5 °C to 40 °C

Green Specifications

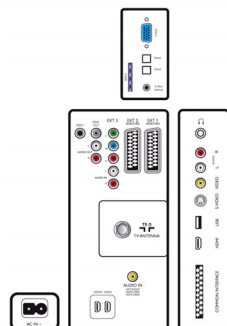
- Safety: Flame retardant housing
- SmartPower
- Low Power Standby

Dimensions

- Set dimensions (W x H x D): 670 x 459 x 95 mm
- Set dimensions with stand (W x H x D): 670 x 517 x 220 mm
- Box dimensions (W x H x D): 758 x 201 x 573 mm
- Product weight: 6 kg
- Product weight (+stand): 9 kg
- Weight incl. Packaging: 12 kg
- VESA wall mount compatible: 200 x 100 mm

Accessories

- Included accessories: Power cord, Tabletop swivel stand, Warranty Leaflet
- Optional accessories: Set up Remote RC2573GR, Guest remote control 22AV1105, Theme TV remote 22AV1107, Wallmount (tilt) 22AV3200/10



Issue date 2014-02-12

Version: 1.1.6

12 NC: 8670 000 52827
EAN: 87 12581 48793 5

© 2014 Koninklijke Philips N.V.
All Rights reserved.

Specifications are subject to change without notice.
Trademarks are the property of Koninklijke Philips N.V.
or their respective owners.

www.philips.com

* For information on DVB-T enrolled countries please ask your Philips contact.

* Typical on-mode power consumption measured according to IEC62087 Ed 2.

* Energy consumption in kWh per year, based on the power consumption of the television operating 4 hours per day for 365 days. The actual energy consumption will depend on how the television is used.

* This television contains lead only in certain parts or components where no technology alternatives exist in accordance with existing exemption clauses under the RoHS Directive.