



Philips Brilliance  
LCD monitor with  
Webcam, MultiView

Quad HD  
27" (68.6 cm)  
2560 x 1440 display

**Brilliance**

**272C4QPKAB**

## Crystalclear images, maximum performance

with MultiView

This Philips 27" display will amaze you with its Crystalclear Quad HD 2560x1440 images and brilliant colors. MultiView allows active dual connect and view. Its 2mp webcam enables you to socialize.

### Brilliant performance

- PLS Quad HD technology ensures 8 bit color, 109 ppi images
- Crystalclear images with Quad HD 2560 x 1440 pixels
- MultiView enables simultaneous dual connect and view
- Webcam and mic keeps you connected with family and friends
- SmartConnect with HDMI, Display port and Dual link DVI
- Built-in stereo speakers for multimedia

### Easy to experience

- SmartImage presets for easy optimized image settings
- SmartTxt for a optimized reading experience
- SmartKolor for rich vibrant images

### Sustainable Eco-design

- PowerSensor saves up to 80% energy costs
- PVC-BFR free housing

**PHILIPS**

# Highlights

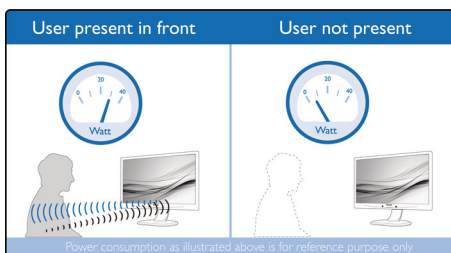
## PLS Quad HD

This professional Philips display uses latest PLS Quad HD panel giving you ultra high-res brilliant wide angle images with 2560x1440 pixel resolution. With excellent 8 bit color depth combined with 109 ppi density, you can now enjoy professional true color sRGB images compared to limited 6 bit color depth displays with 82ppi density. Its higher brightness and lower power consumption relative to conventional wide view angle displays ensure you always have brilliant performance, while saving energy too. It's best suited for professional applications like CAD, Graphics design, Image rendering etc

## Crystalclear images

These latest Philips screens deliver Crystalclear, Quad HD 2560x1440 or 2560x1080 pixel images. Utilizing high performance panels with high density pixel count, enabled by high bandwidth sources like Displayport, HDMI, Dual link DVI, these new displays will make your images and graphics come alive. Whether you are demanding professional requiring extremely detailed information for CAD-CAM solutions, using 3D graphic applications or a financial wizard working on huge spreadsheets, Philips displays will give you Crystalclear images.

## PowerSensor



PowerSensor is a built-in 'people sensor' that transmits and receives harmless infrared signals to determine if user is present and automatically reduces monitor brightness when user steps away from the desk, cutting energy costs by up to 80 percent and prolonging monitor life

## Socialize with webcam

Embedded 2 megapixel webcam with superb, bright and crisp images enables you to socialize with your family and friends. Its sensitive microphone ensures that your voice carries through clearly. You can hear clear audio either from its built in stereo speakers, or attach your own headphones for private conversation. This simple built-in solution ensures that you don't have to tangle with installing camera and positioning microphones anymore.

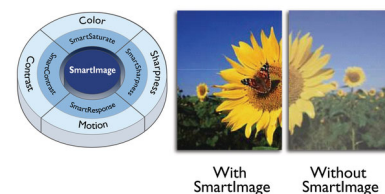
## MultiView technology

With the ultra-high resolution Philips MultiView display you can now experience a world of connectivity. MultiView enables active dual connect and view so that you can work with multiple devices like a PC and notebook simultaneously, for complex multi-tasking.

## SmartConnect

With a plethora of connectivity, these Philips displays come equipped with multi connections like Dual link DVI, Display Port, universal HDMI connector, enabling you to enjoy high resolution uncompressed video and audio content. Regardless of what source you use, you can rest assured that this Philips display will ensure your investment is not made obsolete any time soon!

## SmartImage



SmartImage is an exclusive leading edge Philips technology that analyzes the content displayed on your screen and gives you optimized display performance. This user friendly interface allows you to select various modes like Office, Photo, Movie, Game, Economy etc., to fit the application in use. Based on the selection,

SmartImage dynamically optimizes the contrast, color saturation and sharpness of images and videos for ultimate display performance. The Economy mode option offers you major power savings. All in real time with the press of a single button!

## SmartKolor

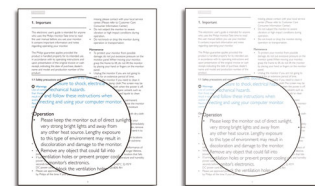


SmartKolor On

SmartKolor Off

SmartKolor is a sophisticated color extension technology that is able to enhance visual color range of the display. By boosting RGB gain level of the display, this feature enables you to have rich, vibrant images for experiencing outstanding photos and videos.

## SmartTxt



SmartTxt On

SmartTxt Off

SmartTxt is a sophisticated algorithm that enhances reading of text based application such as PDF documents or ebooks which usually requires more focus and concentration. SmartTxt feature increases the contrast and boundary sharpness of text content for better readability. Optimization for reading is done by adjusting the display's gray level scale along with white balance, brightness and contrast.

## PVC-BFR free housing

This Philips monitor housing is free from brominated flame retardant and polyvinyl chloride (PVC-BFR free)



QHD  
2560 x 1440



Webcam



PLS  
Wide Viewing  
Angle



MultiView



PowerSensor



SmartConnect



Wide  
Viewing Angle



Built-in speakers



SmartTxt

# Specifications

## Picture/Display

- LCD panel type: PLS LCD
- Backlight type: W-LED system
- Panel Size: 27 inch / 68.6 cm
- Effective viewing area: 596.74 x 335.66 mm
- Aspect ratio: 16:9
- Optimum resolution: 2560 x 1440 @ 60Hz
- Response time (typical): 12 ms
- SmartResponse (typical): 6 ms (Gray to Gray)
- Brightness: 300 cd/m<sup>2</sup>
- Contrast ratio (typical): 1000:1
- SmartContrast: 20,000,000 :1
- Pixel pitch: 0.233 x 0.233 mm
- Viewing angle: 178° (H) / 178° (V), @ C/R > 10
- Picture enhancement: SmartImage
- Display colors: 16.7 M (True 8 bit)
- Scanning Frequency: 30 - 90 kHz (H) / 56 - 75 Hz (V)
- sRGB

## Connectivity

- Signal Input: DVI-Dual Link (digital, HDCP), DisplayPort, HDMI x 2
- Sync Input: Separate Sync, Sync on Green
- Audio (In/Out): PC audio-in, Headphone out

## Convenience

- Built-in Speakers: 2Wx2
- Built-in webcam: 2.0 megapixel camera with microphone and LED indicator
- MultiView: PIP/PBP mode, 2x devices
- User convenience: SmartImage, Menu, Multiview, Power On/Off, PowerSensor
- OSD Languages: Brazil Portuguese, Czech, Dutch, English, Finnish, French, German, Greek, Hungarian, Italian, Japanese, Korean, Polish, Portuguese, Russian, Simplified Chinese, Spanish, Swedish, Traditional Chinese, Turkish, Ukrainian
- Other convenience: Kensington lock, VESA mount (100x100mm)
- Plug & Play Compatibility: DDC/CI, Mac OS X, sRGB, Windows 8/7/XP

## Stand

- Tilt: -5/20 degree

## Power

- On mode: 38 W (EnergyStar 6.0 test method)
- Standby mode: 0.4W (typ)
- Off mode: Zero watts with Zero switch
- Power LED indicator: Operation - White, Standby mode- White (blinking)
- Power supply: 100-240VAC, 50-60Hz, Built-in

## Dimensions

- Product with stand (mm): 639 x 495 x 197 mm
- Product without stand (mm): 639 x 405 x 64 mm
- Packaging in mm (WxHxD): 712 x 557 x 132 mm

## Weight

- Product with stand (kg): 6.30 kg
- Product without stand (kg): 5.60 kg
- Product with packaging (kg): 8.40 kg

## Operating conditions

- Temperature range (operation): 0°C to 40°C °C
- Temperature range (storage): -20°C to 60°C °C
- Relative humidity: 20%-80 %
- Altitude: Operation: +12,000ft (3,658m), Non-operation: +40,000ft (12,192m)
- MTBF: 30,000 hour(s)

## Sustainability

- Environmental and energy: EnergyStar 6.0, EPEAT Silver, PowerSensor, RoHS
- Recyclable packaging material: 100 %
- Specific Substances: PVC / BFR free housing, Mercury free, Lead free

## Compliance and standards

- Regulatory Approvals: BSMI, CE Mark, cETLus, FCC Class B, GOST, SASO, SEMKO, TCO 6.0, TUV Ergo, TUV/GS, WEEE

## Cabinet

- Front bezel: Black
- Rear cover: Black
- Foot: Black
- Finish: Texture



Issue date 2018-11-01

Version: 8.0.1

12 NC: 8670 000 96718  
EAN: 87 12581 66393 3

© 2018 Koninklijke Philips N.V.  
All Rights reserved.

Specifications are subject to change without notice.  
Trademarks are the property of Koninklijke Philips N.V.  
or their respective owners.

[www.philips.com](http://www.philips.com)