

Philips Software Upgrade from a USB drive

Introduction

Philips continuously tries to improve its products and it wants you to benefit from that even after your purchase. Therefore we allow you to upgrade your TV software using a USB memory device (not supplied).

You will need the following:

- A computer that is connected to the internet
- Windows XP, Vista, or 7
- An empty USB drive (drives with U3 software are not supported. The U3 uninstall tool can be found here <http://u3.sandisk.com/launchpadremoval.htm>)

Check your current software version:

1. Press the **Menu** button on the remote and select **Setup**.



2. Select **Software>Software information**

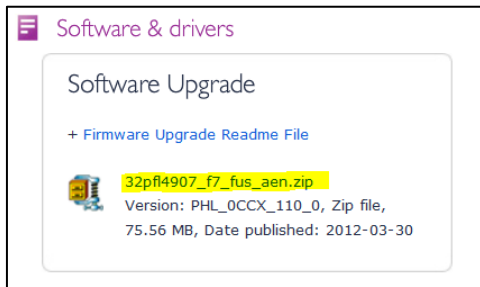


Note: If the version displayed is the same as the version on the website, stop here. You do not need to update your software. If the version number is smaller than the one on the website, proceed to Software installation instructions.

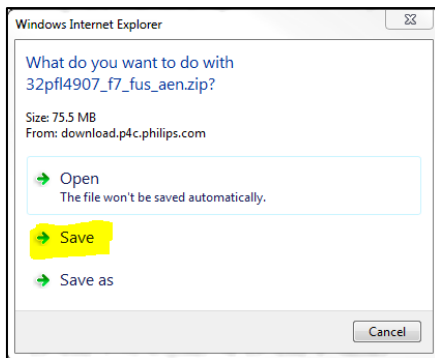
How to download and extract the update file:

NOTE: Make sure to insert your USB drive before you start this process. The drive must be formatted to FAT16 or FAT32. USB drives loaded with U3 software are not compatible with the TV.

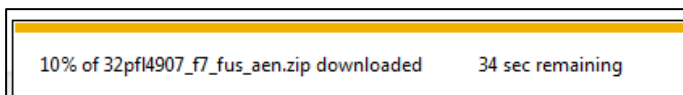
1. Download the ZIP file. You will be prompted to accept a license agreement. Click on **"I accept"**



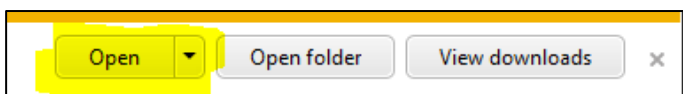
2. Click on **Save**. This should save the document to your **Downloads** folder on the computer.



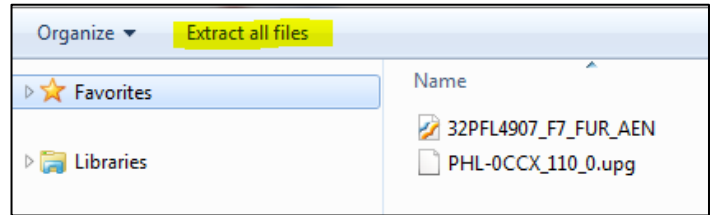
3. This download bar will appear at the bottom of the screen. Wait for the download to finish.



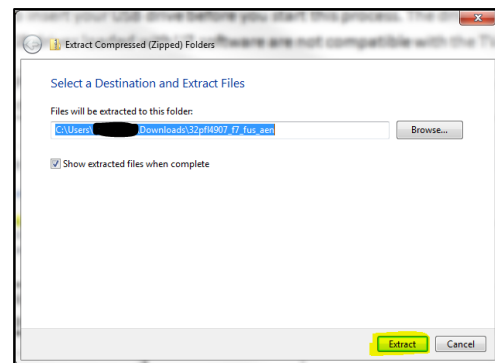
4. Once completed click on **Open**.



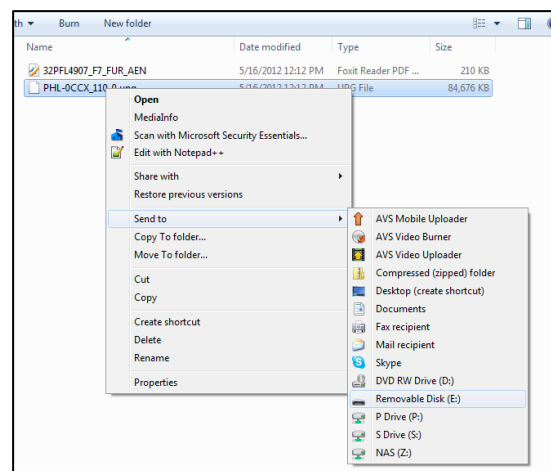
5. You need to Extract the update file. Click on **"Extract all files"**.



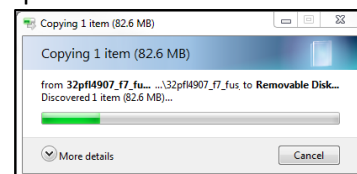
6. Click on **Extract**.



7. The extracted files are shown in a new window. Right-click on the .UPG file and select **Send to Removable Disk** (your drive may have a different name)



8. The upgrade file is being copied to the USB drive. Once completed this window will close. You are ready to complete the update.



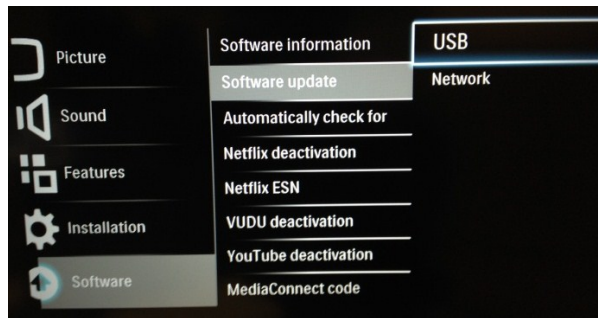
Software installation instructions:

Once the file is copied to the root directory of the USB drive please complete the steps below to complete the software update on the TV.

1. Insert the USB drive into the USB port on your TV.



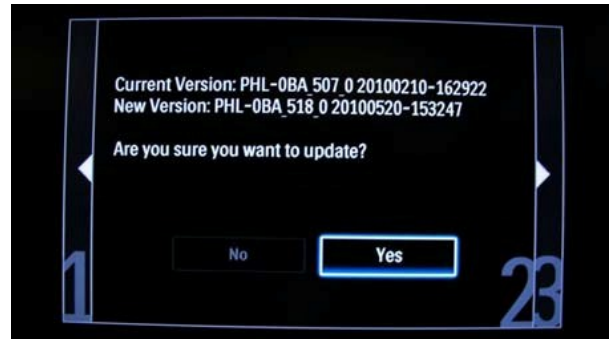
2. Press **Menu** on the TV remote and select **Setup**. Select **Software>Software Update>USB**.



3. Select the file that matches the version number on the website and press **OK**.



4. Select **Yes** to start the update process.



5. **DO NOT** turn the set off while the upgrade is in progress. The upgrade may take several minutes.



6. When the software upgrade is complete, remove the USB drive. Turn the set off and back and on.



Software history:

Software version

Problems fixed

Version 207

- Original Release

Version 210

- Changed 'Auto Software Update' text

Version 211

- Minor Bug Fixes

Version 212

- Minor Bug Fixes
- Improvements to Closed Caption
- Improved PC connection via HDMI
- Updated CNBC app scaling
- Corrected Hulu Plus scaling

Version 214

- Updated to Closed Caption display
- Added Portico to NetTV

Version 217

- Fixes freeze caused by YouTube App