

Always there to help you

Register your product and get support at  
www.philips.com/welcome



EN Short User Manual  
ZH-CN 简版用户手册

AJ6200D/93

PHILIPS

Before using your product, read all accompanying safety information.  
使用前请阅读所有的相关安全信息。

Switch the Second Knob to select previous or next track during play.  
旋转第二个旋钮可选择上一首或下一首曲目。

Make sure that the Third Knob switches to **CLOCK** before setting  
设置之前，确保第三个旋钮转至**CLOCK**。

Store FM radio stations automatically  
自动存储FM电台

You can store a maximum of 20 FM radio stations.  
您最多可存储20个FM电台。

Store FM radio stations manually  
手动存储FM电台

Repeat steps 2-4 to store other stations.  
重复步骤2-4可存储其他电台。

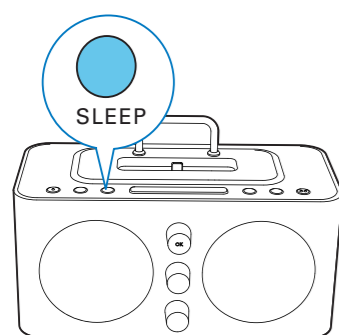
Select a preset radio station  
选择预设电台

All registered and unregistered trademarks are property of their respective owners.  
© 2013 Koninklijke Philips Electronics N.V.  
All rights reserved.

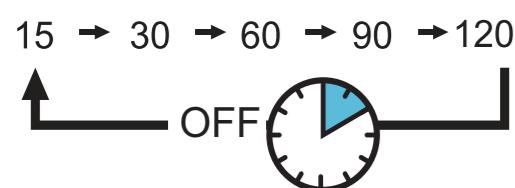
AJ6200D\_93\_Short UM\_V1.0



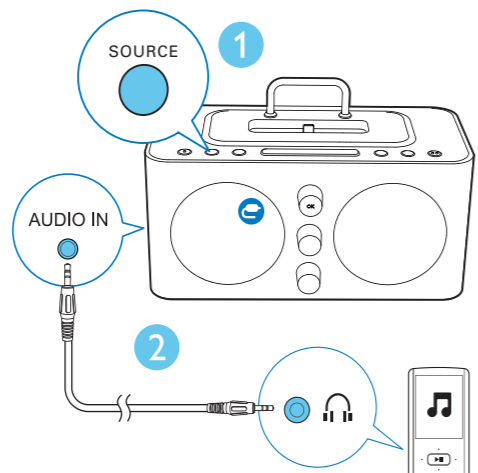
z Z



SLEEP



u



## EN

Congratulations on your purchase and welcome to Philips!

To fully benefit from the support that Philips offers, register your product at [www.philips.com/welcome](http://www.philips.com/welcome).

### Safety

#### Warning

- Never remove the casing of this clock radio.
- Never lubricate any part of this clock radio.
- Never place this clock radio on other electrical equipment.
- Keep this clock radio away from direct sunlight, naked flames or heat.
- Make sure that you always have easy access to the power cord, plug or adaptor to disconnect the clock radio from the power.

- Make sure that there is enough free space around the product for ventilation.
- The clock radio shall not be exposed to dripping or splashing.
- Do not place any sources of danger on the clock radio (e.g. liquid filled objects, lighted candles).
- Where the plug of the Direct Plug-in Adapter is used as the disconnect device, the disconnect device shall remain readily operable.
- Only use power supplies listed in the user manual.
- Battery usage CAUTION – To prevent battery leakage which may result in bodily injury, property damage, or damage to the unit:
  - Install all batteries correctly, + and - as marked on the unit.
  - Do not mix batteries (old and new or carbon and alkaline, etc.).
  - Remove batteries when the unit is not used for a long time.
  - The batteries should not be exposed to excessive heat such as sunshine fire or the like.

### Notice

Any changes or modifications made to this device that are not expressly approved by Philips Consumer Lifestyle may void the user's authority to operate the equipment.



Your product is designed and manufactured with high quality materials and components, which can be recycled and reused.

Please inform yourself about the local separate collection system for electrical and electronic products.

Please act according to your local rules and do not dispose of your old products with your normal household waste. Correct disposal of your old product helps to prevent potential negative consequences for the environment and human health.



Your product contains batteries covered by the European Directive 2006/66/EC, which cannot be disposed with normal household waste. Please observe the local regulations regarding the disposal of packaging materials, exhausted batteries and old equipment.

#### Environmental information

All unnecessary packaging has been omitted. We have tried to make the packaging easy to separate into three materials: cardboard (box), polystyrene foam (buffer) and polyethylene (bags, protective foam sheet.)

Your system consists of materials which can be recycled and reused if disassembled by a specialized company. Please observe the local regulations regarding the disposal of packaging materials, exhausted batteries and old equipment.



"Made for iPod" and "Made for iPhone" mean that an electronic accessory has been designed to connect specifically to iPod or iPhone respectively, and has been certified by the developer to meet Apple performance standards. Apple is not responsible for the operation of this device or its compliance with safety and regulatory standards. Please note that the use of this accessory with iPod or iPhone may affect wireless performance.

iPod and iPhone are trademarks of Apple Inc., registered in the U.S. and other countries.

#### Note

- The type plate is located on the bottom of the apparatus.

☀



### Specifications

Rated Output Power	5 W RMS
Signal to Noise Ratio	>50 dB
Tuning range	87.5-108 MHz
Power supply	Model: ASSA36I-090160;
- AC Power	Input: 100-240V~, 50/60 Hz, 0.6 A Output: 9.0V == 1600 mA
- Battery	2 x AA batteries
Operation Power Consumption	<15 W
Standby Power Consumption	<1 W
Dimensions: Main Unit (W x H x D)	195 x 99 x 123 mm
Weight: Main Unit	0.79 kg

## ZH-CN

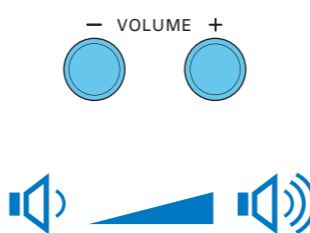
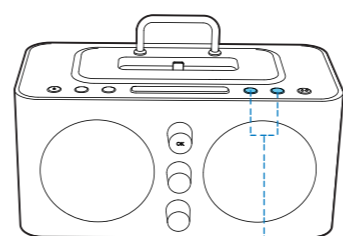
### 注意事项

#### 警告

- 切勿拆下本时钟收音机的任何部件。
- 切勿润滑本时钟收音机的任何部件。
- 切勿将本时钟收音机置于其他电器设备之上。
- 应让本时钟收音机远离阳光直射、明火或高温。
- 确保始终可轻易地接触到电源线、电源插头或适配器，以便于断开时钟收音机的电源。

- 请确保产品周围有足够的空间进行通风。
- 不得将时钟收音机暴露在漏水或溅水环境下。
- 不要将任何危险源放在本时钟收音机上（例如装有液体的物体、点燃的蜡烛）。
- 如果将直插式适配器的插头用作断开设备，则断开设备应可以随时使用。
- 仅使用用户手册中列出的电源。
- 电池使用注意事项。为防止电池泄漏而造成人身伤害、财产损失或装置损坏，请：
  - 按照装置上标明的 + 极和 - 极，正确安装所有电池。
  - 请勿混合使用电池（旧电池与新电池或碳电池与碱性电池，等等）。
  - 若打算长期不用本装置，应取出电池。
  - 不可将电池置于高温环境，如阳光直射处、明火或类似环境。

🔊



### 注意

如果用户未经 Philips 优质生活部门的明确许可而擅自对此设备进行更改或修改，则可能导致其无权操作此设备。



本产品采用可回收利用的高性能材料和组件制造而成。请遵循当地的规章制度，不要将旧产品与一般的生活垃圾一同弃置。正确弃置旧产品有助于避免对环境 and 人类健康造成潜在的负面影响。



本产品包含欧盟指令 2006/66/EC 涉及的电池，该电池不可与普通生活垃圾一起处理。请自行了解当地关于分类收集电池的规定，正确弃置电池有助于避免对环境 and 人类健康造成负面影响。

#### 环境信息

已省去所有不必要的包装。我们努力使包装易于分为三种材料：纸板（盒）、泡沫塑料（缓冲物）和聚乙烯（袋、保护性泡沫片）。您的系统包含可回收利用的材料（如果由专业公司拆卸）。请遵守当地有关包装材料、废电池和旧设备的处理的规定。



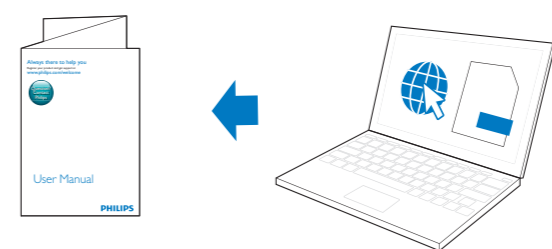
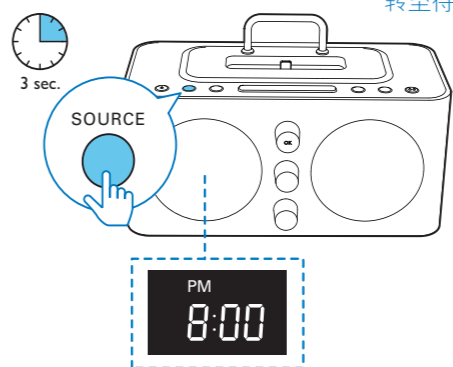
"Made for iPod" 和 "Made for iPhone" 表示电子附件专为连接 iPod 或 iPhone 而设计，并经开发人员认证，符合 Apple 性能标准。Apple 对该设备的操作及其是否符合安全和法规标准不负任何责任。请注意，通过 iPod 或 iPhone 使用该附件可能影响无线性能。iPod 和 iPhone 是 Apple Inc. 在美国和其它国家/地区注册的商标。

#### 注

- 型号铭牌位于本设备的底部。

🔌

Switch to standby mode  
转至待机模式

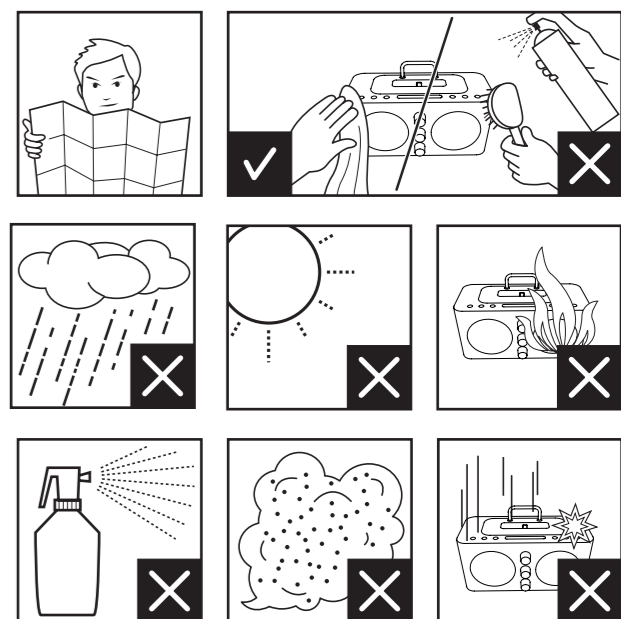


To download the full user manual, visit [www.philips.com/support](http://www.philips.com/support)  
访问 [www.philips.com/support](http://www.philips.com/support) 下载完整的用户手册。

### 规格

额定输出功率	5 W RMS
信噪比	>50 dB
调谐范围	87.5-108 MHz
电源供应	型号: ASSA36I-090160;
- AC 电源	输入: 100 - 240 V~, 50/60 Hz, 0.6 A 输出: 9 V == 1600 mA
- 电池	2 x AA 电池
操作功耗	<15 W
待机功耗	<1 W
尺寸 - 主装置 (宽 x 高 x 厚)	195 x 99 x 123 毫米
重量 - 主装置	0.79 公斤

!



部件名称 Name of the Parts	有毒有害物质或元素 Hazardous/toxic Substance					
	铅 (Pb, Lead)	汞 (Hg, Mercury)	镉 (Cd, cadmium)	六价铬 (Chromium 6+)	多溴联苯 (PBB)	多溴二苯醚 (PBDE)
Housing 外壳	o	o	o	o	o	o
Loudspeakers 喇叭单元	o	o	o	o	o	o
PWBs 电路板组件	x	o	o	o	o	o
Accessories (Remote control & cables) 附件 (遥控器、电源线、连接绳)	x	o	o	o	o	o

o: 表示该有毒有害物质在该部件所有均质材料中的含量均在 SJ/T11363 - 2006 标准规定的限量要求以下。  
o: Indicates that this toxic or hazardous substance contained in all of the homogeneous materials for this part is below the limit requirement in SJ/T11363 - 2006.

x: 表示该有毒有害物质至少在该部件的某一均质材料中的含量超出 SJ/T11363 - 2006 标准规定的限量要求。

x: Indicates that this toxic or hazardous substance contained in at least one of the homogeneous materials used for this part is above the limit requirement in SJ/T11363 - 2006.



10 环保使用期限 Environmental Protection Use Period

This logo refers to the period ( 10 years )  
电子信息产品中含有的有毒有害物质或元素在正常使用的条件下不会发生外泄或突变，电子信息产品用户使用该电子信息产品不会对环境污染或对其人身、财产造成严重损害的期限。

This logo refers to the period ( 10 years ) during which the toxic or hazardous substances or elements contained in electronic information products will not leak or mutate so that the use of these [substances or elements] will not result in any severe environmental pollution, any bodily injury or damage to any assets.