

Always there to help you

Register your product and get support at
www.philips.com/welcome

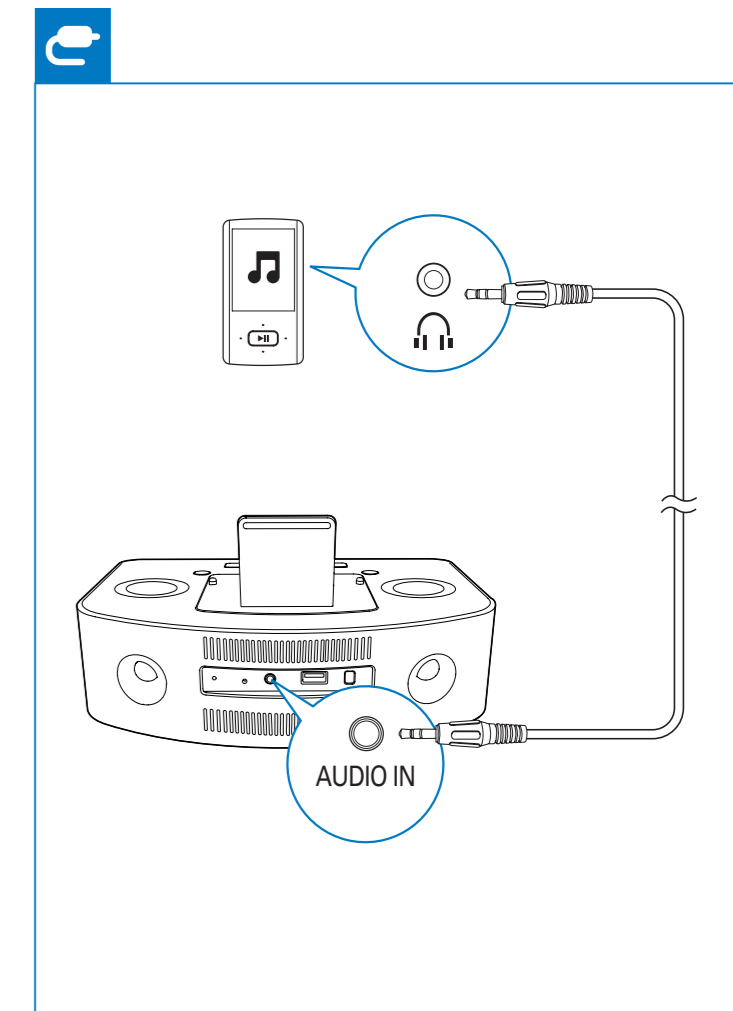
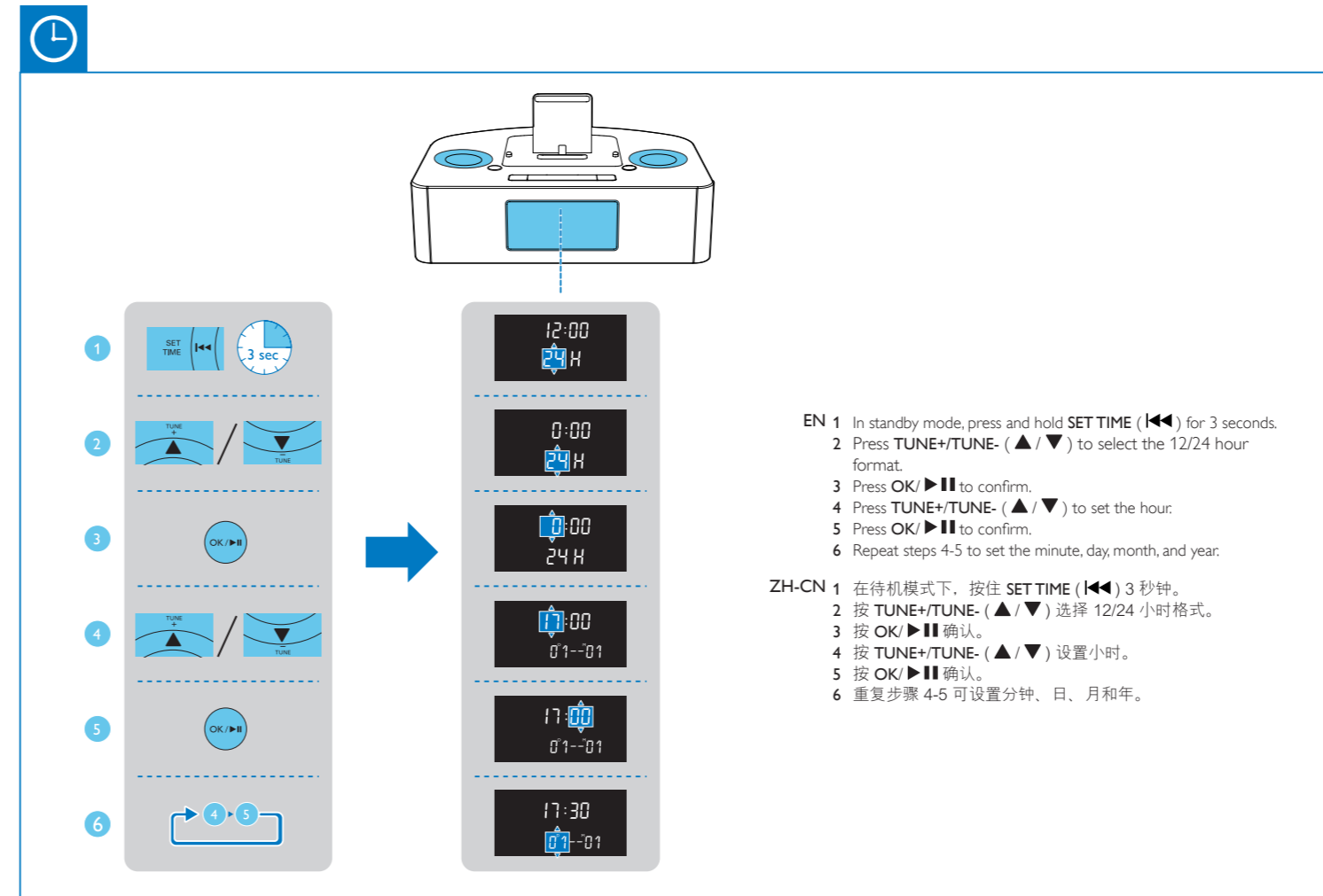
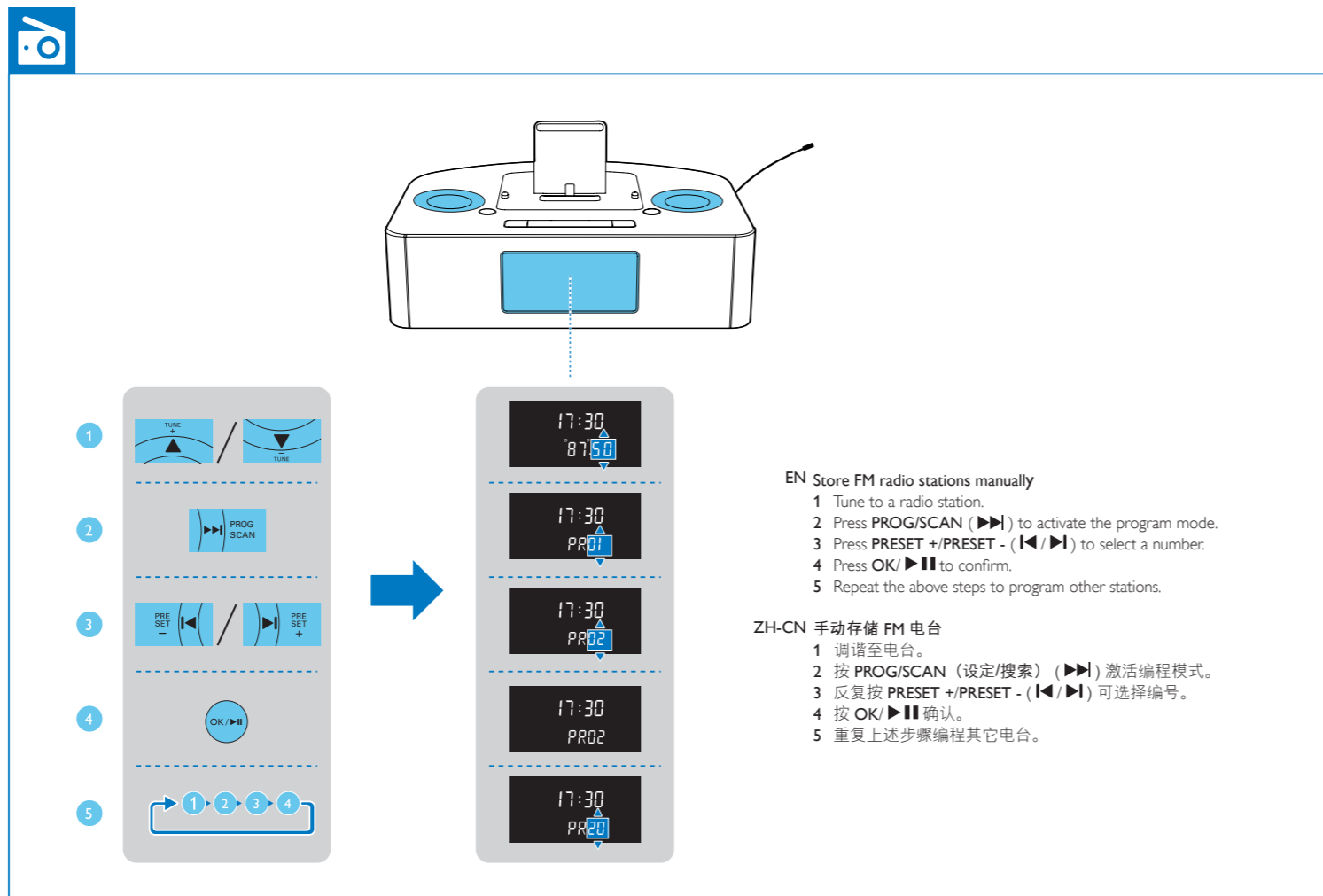
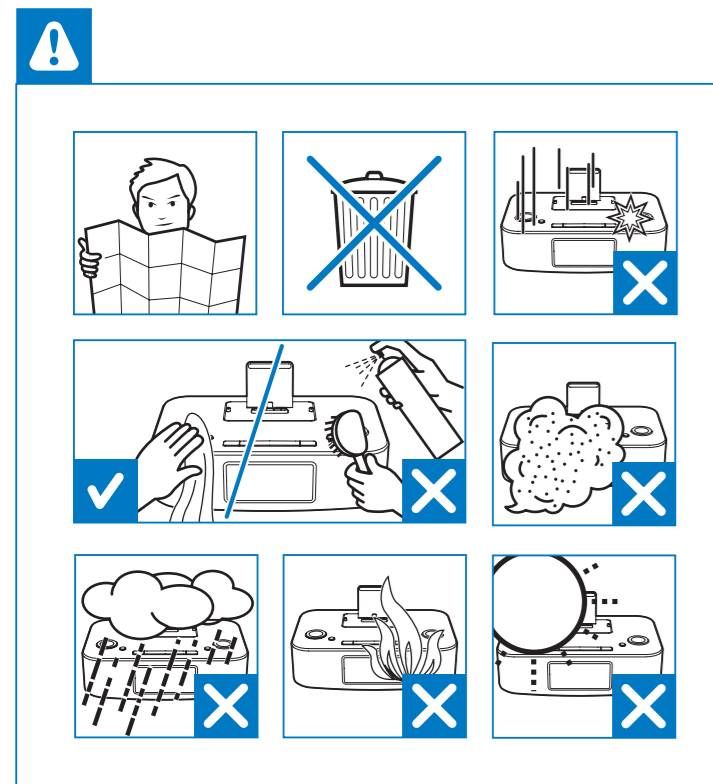
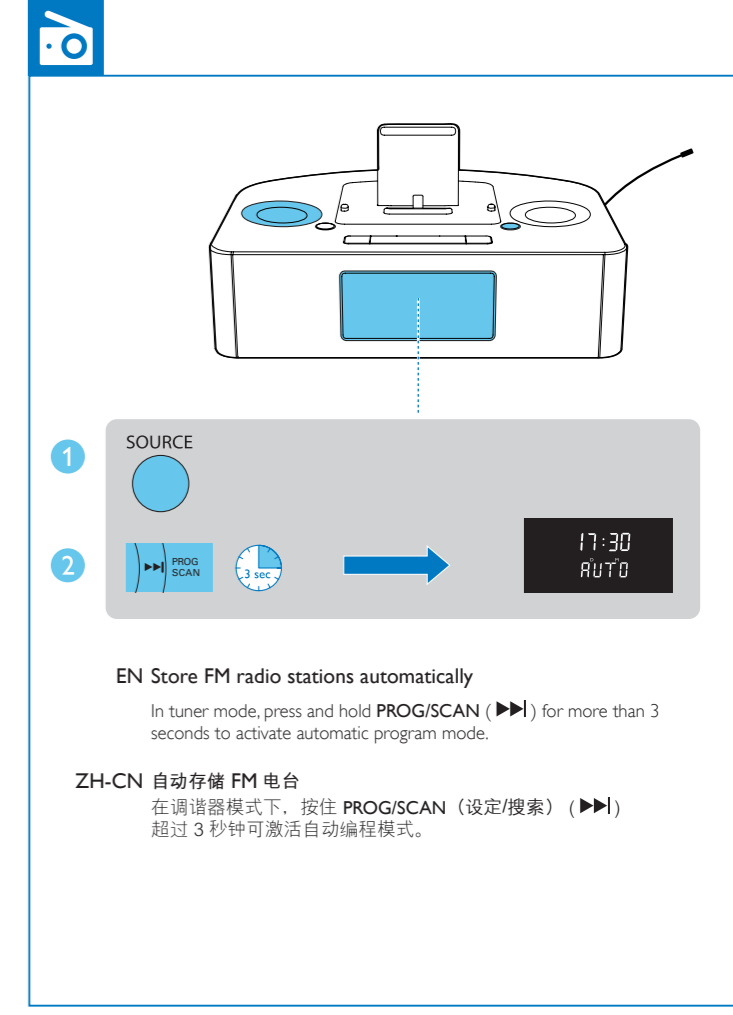
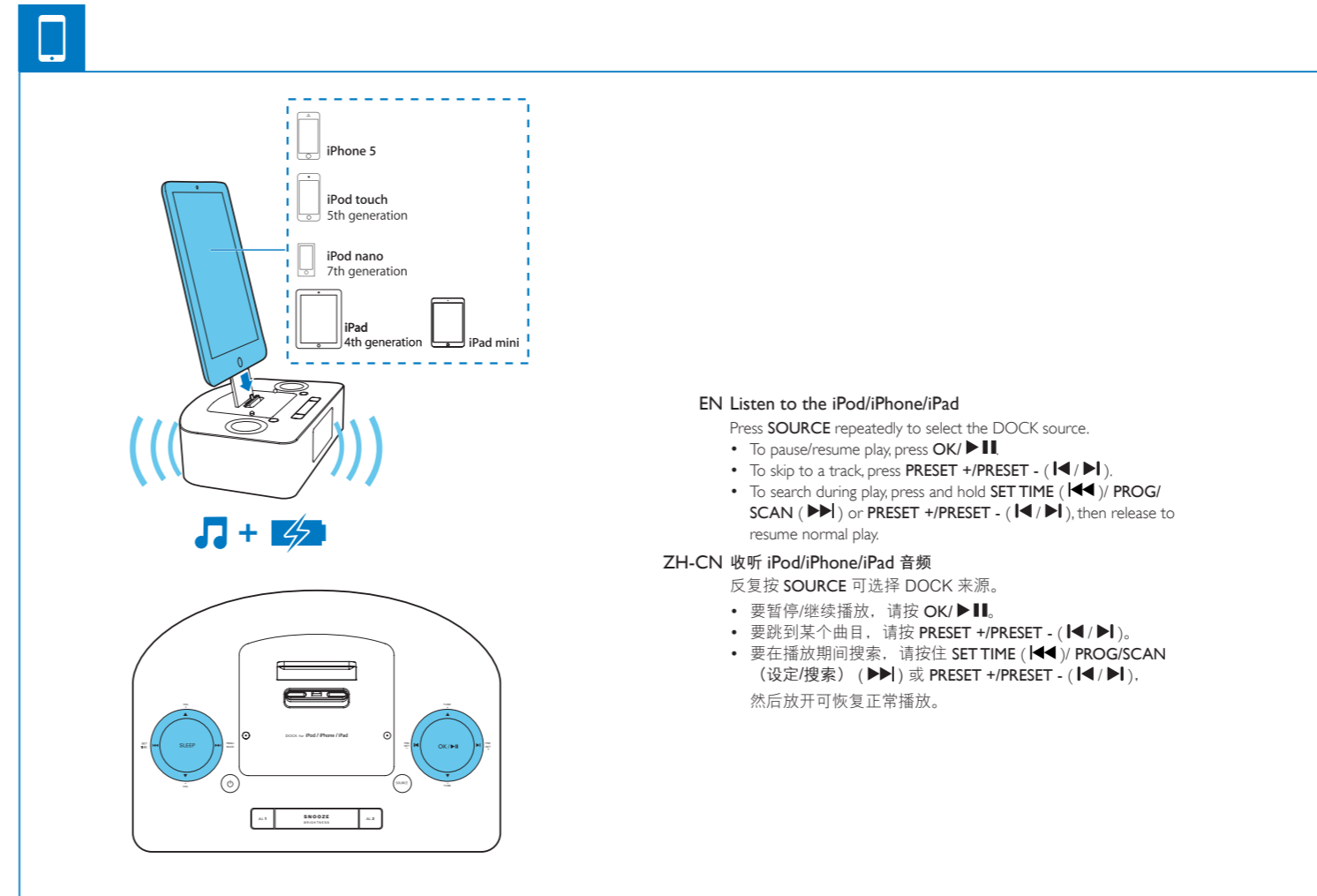
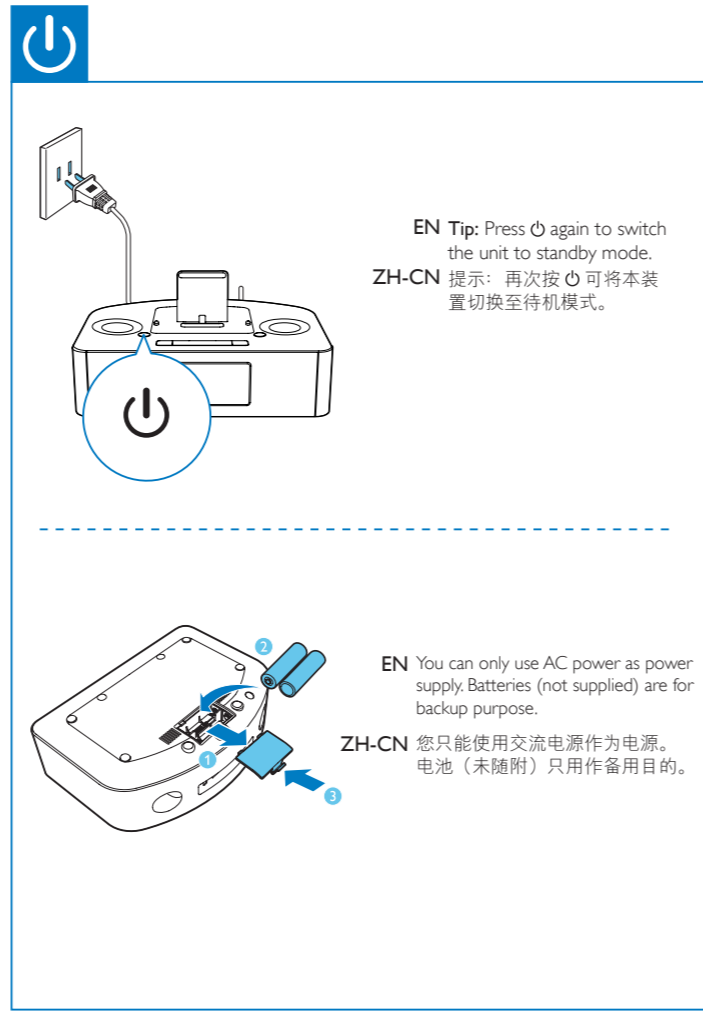
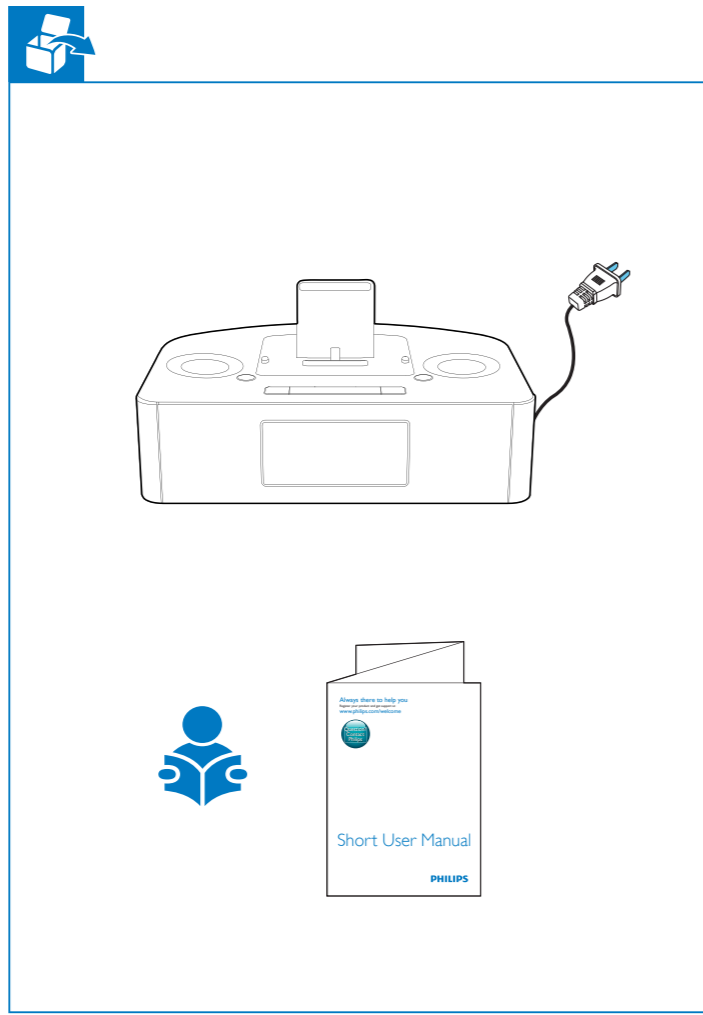
AJ7050D

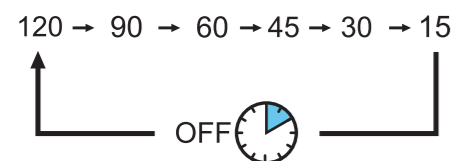
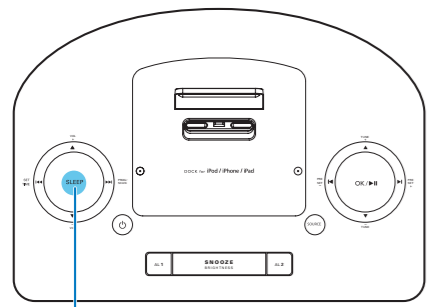
Question?
Contact
Philips



EN Short User Manual
ZH-CN 简明用户手册

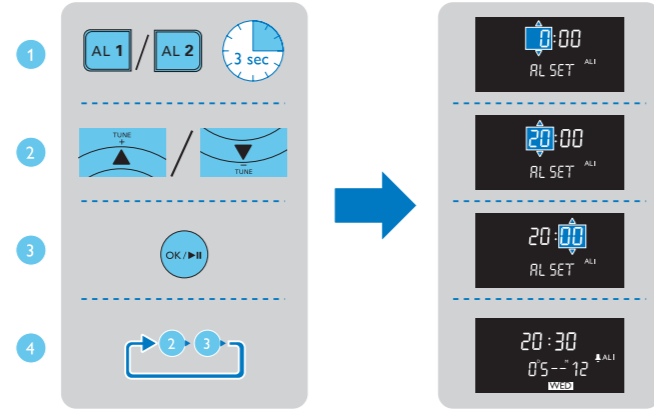
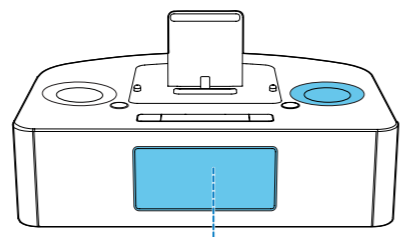
PHILIPS





EN When the system is turned on, press it to select the sleep timer period. When [OFF] (off) is displayed, the sleep timer is deactivated.

ZH-CN 系统打开后，按下可选择定时关机时段。显示 [OFF] (关) 时，表明定时关机已被禁用。

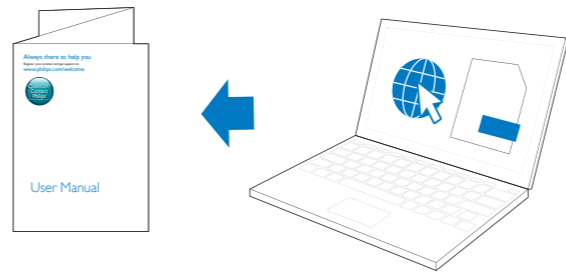


EN Make sure that you have set the clock correctly.

- 1 Press and hold **AL1/AL2** for 3 seconds.
- 2 Press **TUNE+/TUNE-** (▲/▼) to set the hour.
- 3 Press **OK/▶▶** to confirm.
- 4 Repeat steps 2-3 to set the minute, select when to ring the alarm, choose alarm sound source, and set alarm volume.

ZH-CN 确保您已正确设置时钟。

- 1 按住 **AL1/AL2** 3 秒钟。
- 2 按 **TUNE+/TUNE-** (▲/▼) 设置小时。
- 3 按 **OK/▶▶** 确认。
- 4 重复步骤 2-3 可设置分钟、选择何时响铃、选择闹钟声源和设置闹钟音量。



EN To download the full user manual, visit www.philips.com/support.

ZH-CN 要下载完整用户手册，请访问 www.philips.com/support。

警告

- 切勿拆下本产品的外壳。
- 切勿润滑本装置的任何部件。
- 切勿将本装置放在其它电器设备上。
- 应让本装置远离阳光直射、明火或高温。
- 确保始终可轻易地接触到电源线、电源插头或适配器，以便于将本装置从电源上断开。

注意

如果用户未经 WOOX Innovations 的明确许可而擅自对此设备进行更改或修改，则可能导致其无权操作此设备。

飞利浦及飞利浦盾牌标志是 Koninklijke Philips N.V. 的注册商标。经 Koninklijke Philips N.V. 许可，由 WOOX Innovations Limited 使用。

旧产品和电池的处理

本产品采用可回收利用的高性能材料和组件制造而成。切勿将本产品与其它生活垃圾一起处理。请自行了解当地关于分类收集电子、电气产品及电池的规定。正确弃置这些产品有助于避免对环境 and 人体健康造成潜在的负面影响。本产品所含的电池不能与一般的生活垃圾一同弃置。请自行了解当地关于分类收集电池的规定。正确弃置电池有助于避免对环境 and 人类健康造成潜在的负面影响。

关于您所在地区回收中心的更多信息，请访问 www.recycle.philips.com。

环境信息

已省去所有不必要的包装。我们努力使包装易于分为三种材料：纸板（盒）、泡沫塑料（缓冲物）和聚乙烯（袋、保护性泡沫片）。您的系统包含可回收利用的材料（如果由专业公司拆卸）。请遵守当地有关包装材料、废电池和旧设备的处理的规定。规格如有更改，恕不另行通知。WOOX 保留随时更改产品的权利，而且没有义务对较早前提供的产品进行相应的调整。



“Made for iPod”、“Made for iPhone”和“Made for iPad”表示电子附件专为连接 iPod、iPhone 或 iPad 而设计，并经开发人员认证，符合 Apple 性能标准。Apple 对该设备的操作及其是否符合安全和法规标准不负任何责任。请注意，通过 iPod、iPhone 或 iPad 使用该配件可能影响无线性能。

iPod 和 iPhone 是 Apple Inc. 在美国和其它国家/地区注册的商标。iPad 是 Apple Inc. 的商标。

II 类设备符号：



具有双重绝缘的 II 类设备，不提供保护接地。

注

- 型号铭牌位于本装置的底部。

规格

功放器	
总输出功率	2 x 3 瓦 RMS
频率响应	80 赫兹-16 千赫，±3 分贝
信噪比	> 67dBA
Aux 输入（音频输入）	600 毫伏 RMS，22 千欧

FM

调谐范围	FM 87.5 - 108 兆赫
调谐栅	50 千赫
- 单声道，26dB 信噪比	<22 dBf
- 立体声，46dB 信噪比	<43 dBf
搜索灵敏度	<28 dBf
总谐波失真	<2%
信噪比	> 50 dB

扬声器

扬声器阻抗	4 欧姆
扬声器驱动器	58 毫米全频
灵敏度	83 分贝/1 米/1 瓦

一般信息

交流电源	约 220 伏，50 赫兹
操作功耗	15 瓦
待机功耗（时钟显示）	<1 瓦
尺寸	260 x 137 x 185 毫米
- 主装置（宽 x 高 x 厚）	
重量（主装置，不带包装）	1.13 千克

Safety

Important Safety Instructions

- 1 Read these instructions.
- 2 Keep these instructions.
- 3 Heed all warnings.
- 4 Follow all instructions.
- 5 Do not use this apparatus near water.
- 6 Clean only with dry cloth.
- 7 Do not block any ventilation openings. Install in accordance with the manufacturer's instructions.
- 8 Do not install near any heat sources such as radiators, heat registers, stoves, or other apparatus (including amplifiers) that produce heat.
- 9 Protect the power cord from being walked on or pinched, particularly at plugs, convenience receptacles, and the point where they exit from the apparatus.
- 10 Only use attachments/accessories specified by the manufacturer.
- 11 Unplug this apparatus during lightning storms or when unused for long periods of time.
- 12 Refer all servicing to qualified service personnel. Servicing is required when the apparatus has been damaged in any way, such as power-supply cord or plug is damaged, liquid has been spilled or objects have fallen into the apparatus, the apparatus has been exposed to rain or moisture, does not operate normally, or has been dropped.
- 13 Battery usage CAUTION – To prevent battery leakage which may result in bodily injury, property damage, or damage to the unit:
 - Install all batteries correctly, + and - as marked on the unit.
 - Do not mix batteries (old and new or carbon and alkaline, etc.).
 - Remove batteries when the unit is not used for a long time.
 - Batteries (battery pack or batteries installed) shall not be exposed to excessive heat such as sunshine, fire or the like.
- 14 Apparatus shall not be exposed to dripping or splashing.
- 15 Do not place any sources of danger on the apparatus (e.g. liquid filled objects, lighted candles).
- 16 Where the MAINS plug or an appliance coupler is used as the disconnect device, the disconnect device shall remain readily operable.

Warning

- Never remove the casing of this apparatus.
- Never lubricate any part of this apparatus.
- Never place this apparatus on other electrical equipment.
- Keep this apparatus away from direct sunlight, naked flames or heat.
- Ensure that you always have easy access to the power cord, plug or adaptor to disconnect the apparatus from the power.

Notice

Any changes or modifications made to this device that are not expressly approved by WOOX Innovations may void the user's authority to operate the equipment.

Specifications are subject to change without notice. WOOX reserves the right to change products at any time without being obliged to adjust earlier supplies accordingly.

Your product is designed and manufactured with high quality materials and components, which can be recycled and reused.

Never dispose of your product with other household waste. Please inform yourself about the local rules on the separate collection of electrical and electronic products and batteries. The correct disposal of these products helps prevent potentially negative consequences on the environment and human health.

Your product contains batteries, which cannot be disposed of with normal household waste. Please inform yourself about the local rules on separate collection of batteries. The correct disposal of batteries helps prevent potentially negative consequences on the environment and human health. Please visit www.recycle.philips.com for additional information on a recycling center in your area.

Environmental information

All unnecessary packaging has been omitted. We have tried to make the packaging easy to separate into three materials: cardboard (box), polystyrene foam (buffer) and polyethylene (bags, protective foam sheet).

Your system consists of materials which can be recycled and reused if disassembled by a specialized company. Please observe the local regulations regarding the disposal of packaging materials, exhausted batteries and old equipment.

Philips and the Philips' Shield Emblem are registered trademarks of Koninklijke Philips N.V. and are used by WOOX Innovations Limited under license from Koninklijke Philips N.V.



"Made for iPod," "Made for iPhone," and "Made for iPad" mean that an electronic accessory has been designed to connect specifically to iPod, iPhone, or iPad, respectively, and has been certified by the developer to meet Apple performance standards. Apple is not responsible for the operation of this device or its compliance with safety and regulatory standards. Please note that the use of this accessory with iPod, iPhone, or iPad may affect wireless performance.

iPod and iPhone are trademarks of Apple Inc., registered in the U.S. and other countries. iPad is a trademark of Apple Inc.

Class II equipment symbol:



CLASS II apparatus with double insulation, and no protective earth provided.

Note

- The type plate is located on the bottom of the unit.

Specifications

Amplifier	
Total output power	2 x 3W RMS
Frequency Response	80Hz-16kHz ±3dB
Signal to Noise Ratio	≥ 67dBA
Aux Input (Audio in)	600mV RMS 22kohm

FM	
Tuning Range	FM 87.5 - 108 MHz
Tuning grid	50 KHz
- Mono, 26dB S/N Ratio	<22 dBf
- Stereo, 46dB S/N Ratio	<43 dBf
Search Sensitivity	<28 dBf
Total Harmonic Distortion	<2%
Signal to Noise Ratio	>50 dB

Speakers	
Speaker Impedance	4 ohm
Speaker Driver	58mm full range
Sensitivity	83dB/1m/1W

General information	
AC power	220V~, 50Hz
Operation Power Consumption	15 W