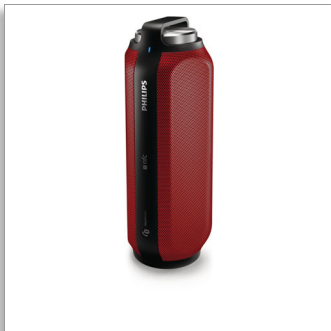




Philips  
wireless portable speaker

### Bluetooth® and NFC

Splash proof  
Built-in microphone for calls  
16W, Rechargeable battery



**BT6600R**

## Small size, incredible sound

### Big sound 360° around

Put speaker down any way you like. 360° of sound gives you incredible sound in any direction. Recharge speaker easily with a docking station. Take it anywhere indoors or out, rain or shine. Extra-long built-in battery even charges phones.

#### Sound that blows you away

- Two speaker drivers & passive radiators give immersive sound
- Digital Sound Processing for lifelike, distortion-less music
- 2 x 8W RMS total output power

#### Advanced versatility

- Wireless music streaming via Bluetooth
- Swap music instantly between 3 devices with MULTIPAIR
- Speaker charging dock included for extra convenience
- One-Touch with NFC-enabled smartphones for Bluetooth pairing
- Built-in microphone for hands-free phone calls

#### Designed to go places

- Splash-proof design ideal for use in wet conditions
- Built-in rechargeable Li-ion battery for playback anywhere
- Up to 12 hours music playtime
- Speaker also acts as power bank for smartphone charging

# PHILIPS

wireless portable speaker  
Bluetooth® and NFC Splash proof, Built-in microphone for calls, 16W, Rechargeable battery

BT6600R/12

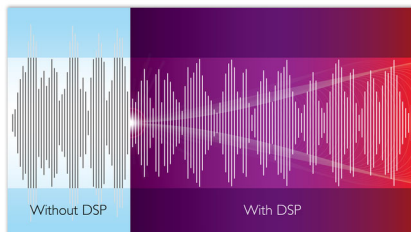
# Highlights

## Twin speaker drivers



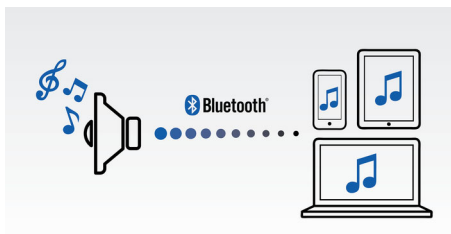
Twin 1.75" Neodymium speaker drivers deliver natural, clear and balanced sound while dual opposing passive radiators extend and boost bass. Front and back full-range speaker drivers create even 360-degree sound, offering the freedom to enjoy the same quality sound wherever the speaker is facing.

## Digital Sound Processing



Advanced sound processing technology enhances the reproduction of your music so that each note resonates with crystal-clear accuracy, and each pause is sealed with pristine silence. Philips' proprietary Digital Sound Processing technology optimizes the performance of compact speaker boxes, delivering sound that is clear, detailed and powerful without any distortion.

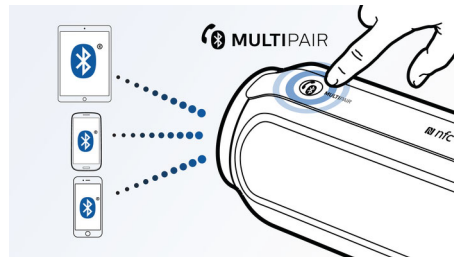
## Wireless music streaming



Bluetooth is a short range wireless communication technology that is both robust

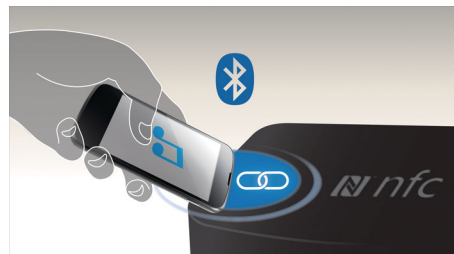
and energy-efficient. The technology allows easy wireless connection to iPod/iPhone/iPad or other Bluetooth devices, such as smartphones, tablets or even laptops. So you can enjoy your favorite music, sound from video or game wireless on this speaker easily.

## Swap music between 3 devices



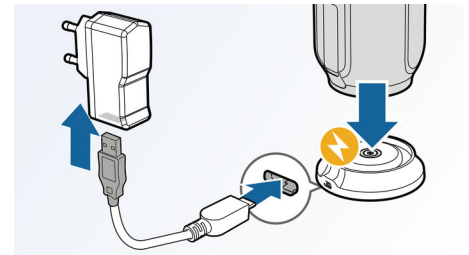
Pair with 3 smart devices simultaneously so you can stream music from whichever device you want, without the hassle of un-pairing and re-pairing. To play a song on a different device, pause the song on the original device first and then play the new song on a different device to take over. It's perfect for sharing music with friends, parties, or just playing different songs stored on different devices. Let friends and family pair at the same time, so you can swap between each other's music easily.

## NFC technology



Pair Bluetooth devices easily with one-touch NFC (Near Field Communications) technology. Just tap the NFC enabled smartphone or tablet on the NFC area of a speaker to turn the speaker on, start Bluetooth pairing, and begin streaming music.

## Speaker charging dock



Recharge your speaker simply and conveniently by docking it in a compact charging dock that fits anywhere in your home. Recharging your speaker while enjoying music lets you listen for as long as you want. For music on the move, the speaker can also be charged via standard USB cable.

## Up to 12 hours music playtime



Play your music loud anytime, anywhere with a built-in rechargeable battery that lasts for up to 12 hours. Listen to all your music without the fuss of tangled power cords and inconvenient searches for electrical outlets, giving you total freedom of movement and a half-day of musical entertainment.

## Splash-proof design

A lightly water resistant design makes the speaker ideal for the shower, the kitchen, near the pool or in a rainy day, so you can enjoy your music anywhere you want.

# Specifications

## Compatibility

- Works with: most Bluetooth smartphones, tablets, music devices
- iPad: iPad 1, iPad 2, new iPad, iPad with Retina display, iPad Air, iPad Air 2, iPad mini 2, iPad mini 3, iPad mini
- iPhone: iPhone 3, iPhone 3GS, iPhone 4, iPhone 4S, iPhone 5, iPhone 5C, iPhone 5S, iPhone 6, iPhone 6 Plus
- iPod touch: 3rd generation or later
- Android tablets & smartphones: with Android 2.1 and Bluetooth 2.1 or above
- other music devices: with Bluetooth 2.1 or above

## Design and finishing

- Color: Red

## Sound

- Output power (RMS): 2 x 8W
- Speakers: 2 x 1.75"
- Sound System: Stereo
- Volume Control: rotary

## Connectivity

- NFC: Tap-to-pair Bluetooth; works with Android 4.0 or above, and Windows phone 8 or above

- Bluetooth profiles: A2DP, AVRCP, HFP
- Bluetooth range: Line of sight, 10M or 30FT
- Audio in (3.5mm)

## Convenience

- Water resistance: IPX4
- USB port: to charge mobile device (5V, 2.1A)
- Built-in microphone: for speaker conference

## Power

- Battery type: Lithium-ion (built-in)
- Operating time on battery: 12 hr
- Power supply: 5V, 2A (USB adapter)

## Accessories

- Included accessories: Speaker charging dock, USB adapter, USB cable for PC charging, Quick install guide, Warranty certificate, World Wide Warranty leaflet

## Dimensions

- Product dimensions (WxDxH): 81 x 76 x 214 mm
- Packaging dimensions (WxDxH): 279 x 117 x 123 mm
- Product weight: 0.7 kg
- Weight incl. Packaging: 1.09 kg



Issue date 2020-07-08

Version: 2.0.7

12 NC: 8670 001 28154  
EAN: 48 95185 61345 1

© 2020 Koninklijke Philips N.V.  
All Rights reserved.

Specifications are subject to change without notice.  
Trademarks are the property of Koninklijke Philips N.V.  
or their respective owners.

[www.philips.com](http://www.philips.com)