

Always there to help you

Register your product and get support at
www.philips.com/support

Question?
Contact
Philips

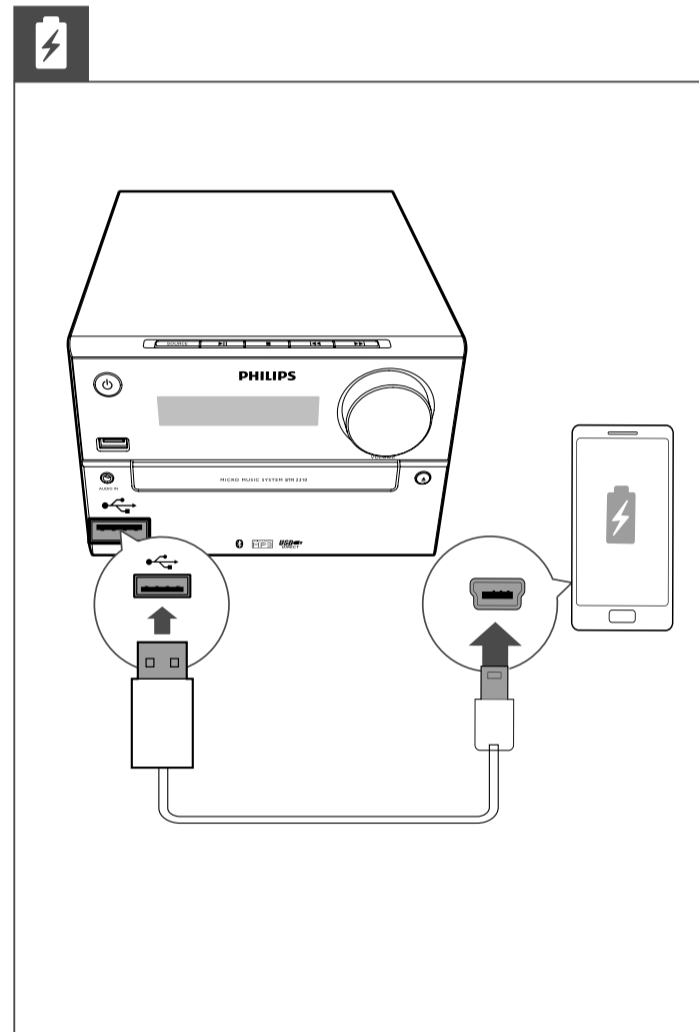
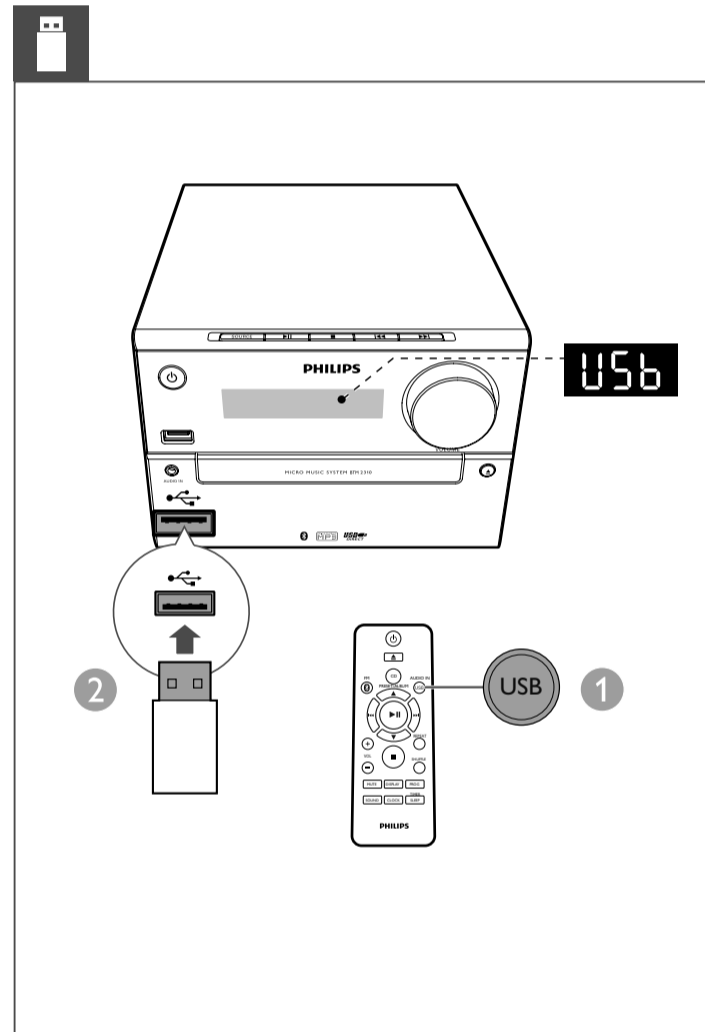
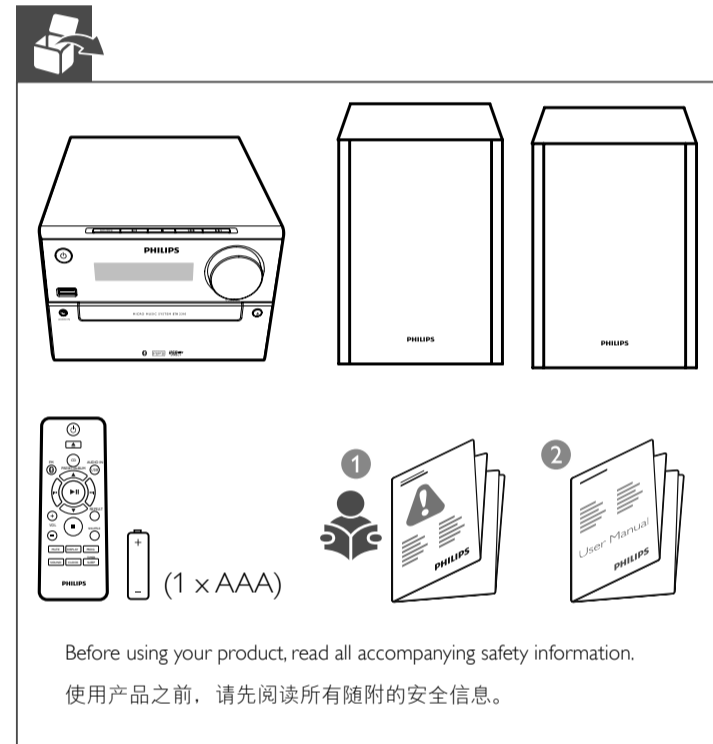
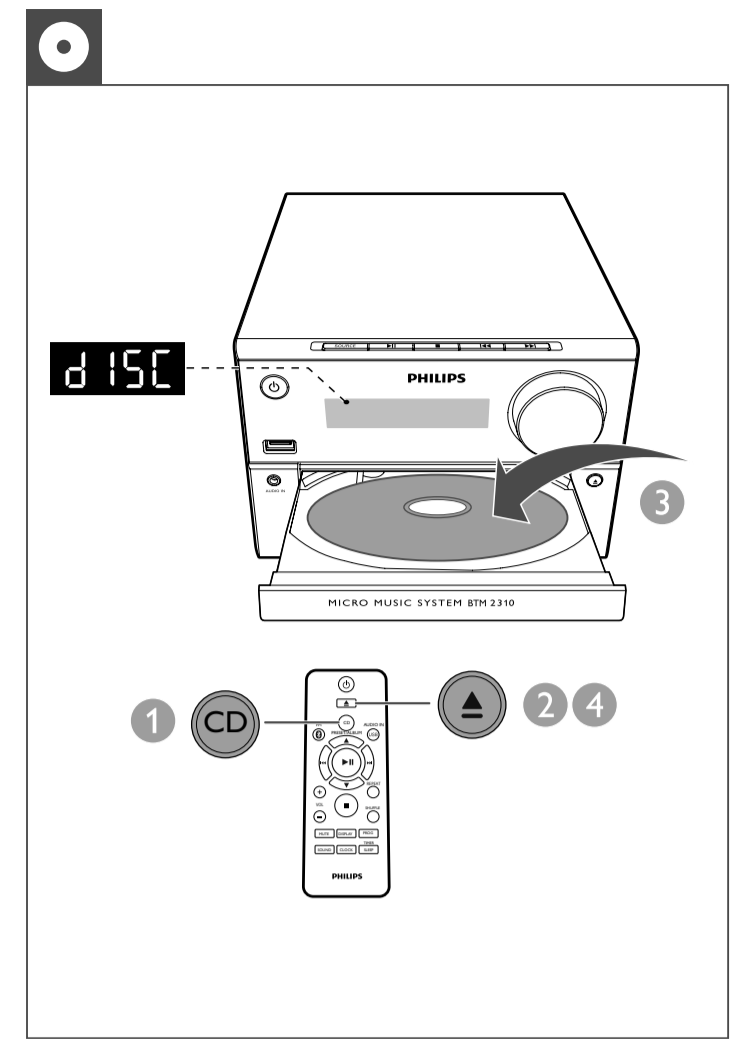
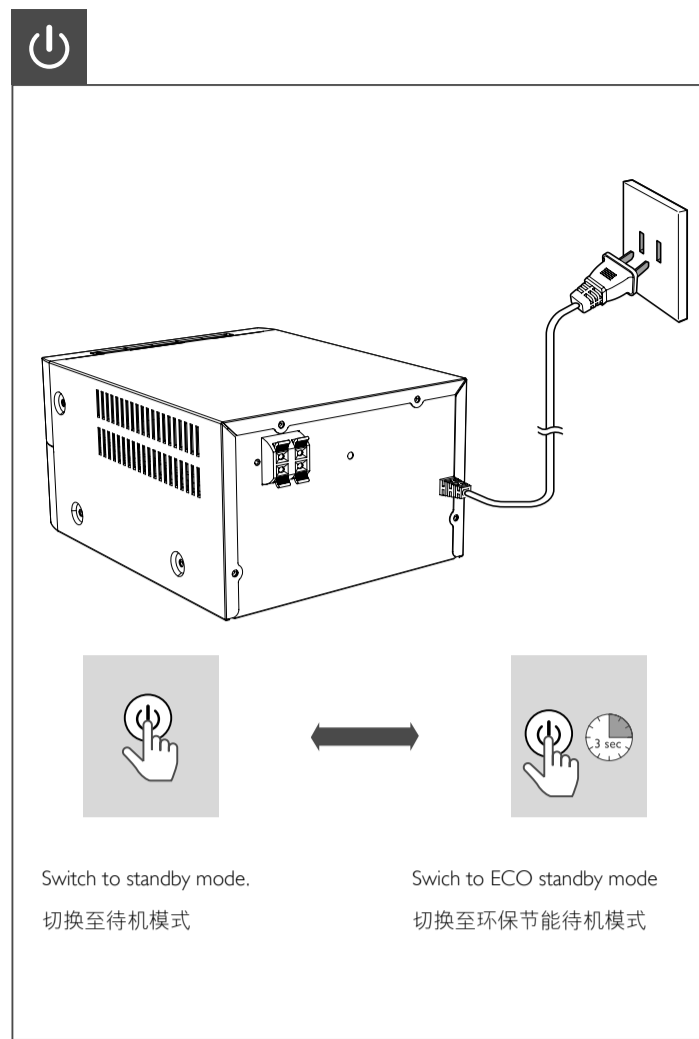
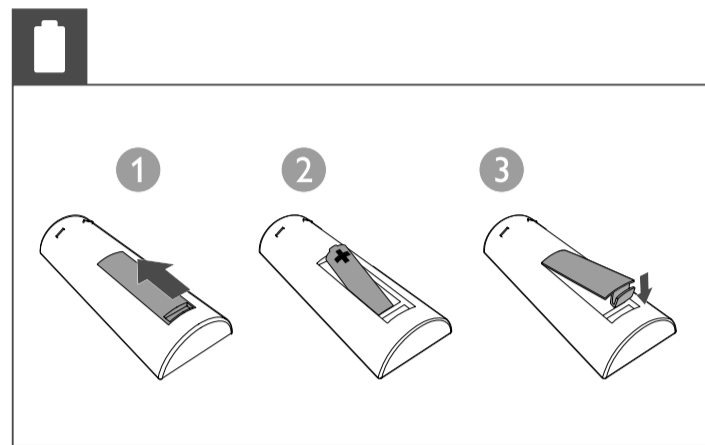
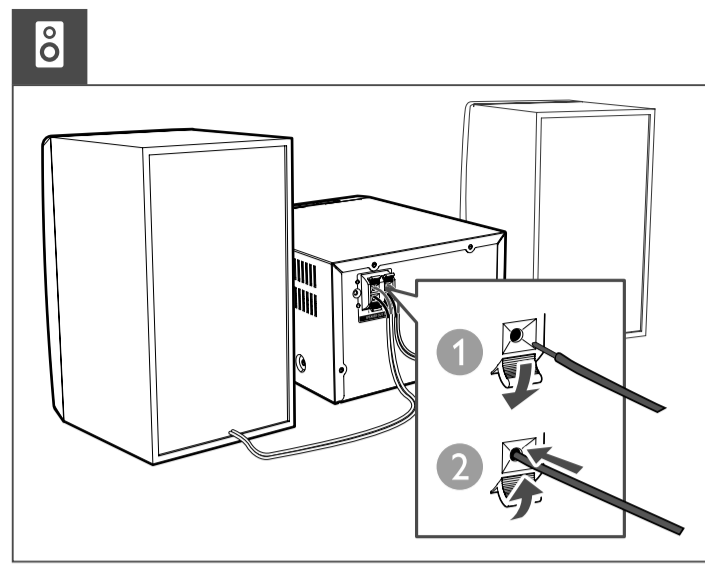
BTM2310



EN Short User Manual

简体中文 简明用户手册

PHILIPS



Control play	
▲ / ▼	Select a folder.
◀ / ▶	Select an audio file.
⏸ / ⏪	Pause or resume play.
■	Stop play.
REPEAT	Play a track or all tracks repeatedly.
SHUFFLE	Play tracks randomly.
VOL +/-	Increase or decrease the volume.
MUTE	Mute or restore sound.
SOUND	Enrich sound effect with DSC: balanced, clear, powerful, warm, and bright.
DISPLAY	Adjust display brightness.
控制播放	
▲ / ▼	选择文件夹。
◀ / ▶	选择音频文件。
⏸ / ⏪	暂停或继续播放。
■	停止播放。
REPEAT	反复播放一首曲目或所有曲目。
SHUFFLE	将随机播放曲目。
VOL +/-	提高或降低音量。
MUTE	静音或恢复声音。
SOUND	通过 DSC 丰富音效: 均衡、清晰、强劲、暖调和响亮。
DISPLAY	调节显示屏亮度。

Specifications are subject to change without notice
2014 © WOOX Innovations Limited. All rights reserved.
Philips and the Philips' Shield Emblem are registered trademarks
of Koninklijke Philips N.V. and are used by WOOX Innovations
Limited under license from Koninklijke Philips N.V.

BTM2310_93_Short User Manual_V3.0

