



# Sound tower

Obsessed with sound

Bring out the best from your CD or iPod/iPhone/iPad with wide, immersive and crystal-clear sound thanks to LivingSound and PureDigital. This 3.1 Philips Docking system features an integrated subwoofer, 200 W power output and an easy-to-use dock.

### Enrich your sound experience

- LivingSound for wider, immersive stereo sound
- 3.1 speaker system with a built-in subwoofer
- Pure digital processing technology for best sound clarity
- 200 W RMS total output power

### Enjoy your music from multiple sources

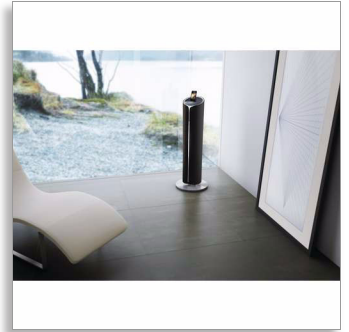
- Play and charge your iPod/iPhone/iPad simultaneously
- Play MP3/WMA-CD, CD and CD-RW
- USB Direct for MP3/WMA music playback
- MP3 Link for portable music playback
- FM digital tuning with presets

### Design that blends into your interior(s)

- Unique tower design to fit your lifestyle

Philips Fidelio  
Docking music system

Dock for iPod/iPhone/iPad



DCM5090

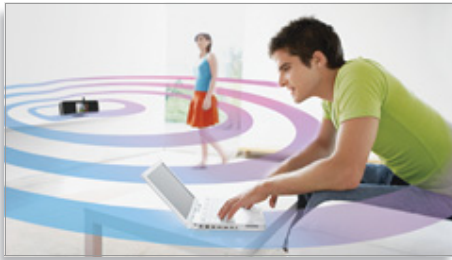


**PHILIPS**  
**Fidelio**

sense **and** simplicity

# Highlights

## LivingSound



Philips' patent-pending LivingSound vastly expands the sweet spot (the ideal listening location in your room) so you can enjoy truly immersive music over a wider area. Combining various sound processes, LivingSound recovers the richness and spatial details of the soundstage that are often lost with a compact stereo system. The effect is a larger than expected sweet spot - one that is extensively and evenly distributed around the room. Now your music enjoyment is no longer confined to the traditionally narrow area. Enjoy optimum stereo sound in a wider area.

## Pure digital sound

Advanced pure digital sound processing technology offers vastly superior sound performance compared to the conventional analogue audio processing technology that is found in docking players that use the analogue audio output from an iPod/iPhone. By collecting the iPod's/iPhone's digital audio output and employing digital processing at each stage of the circuit, a much higher Signal-to-Noise ratio is produced. The result is unsurpassed sound clarity that is in perfect balance.

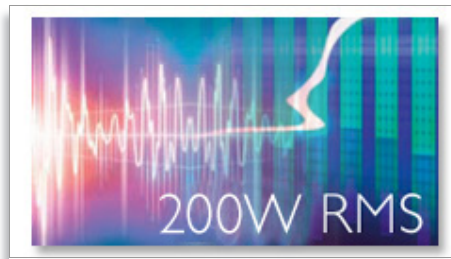
## Play and charge iPod/iPhone/iPad



Enjoy your favourite MP3 music while charging your iPod/iPhone/iPad! The dock lets you

connect your portable device directly to the Philips system so you can listen to your favourite music in superb sound. It also charges your iPod/iPhone/iPad while it plays so you can enjoy your music and not have to worry about your portable player battery running out. The system automatically charges your portable device while it is docked.

## 200 W RMS



This system has 200 W RMS total output power. RMS refers to Root Mean Square, which is a typical measurement of audio power, or rather, the electrical power transferred from an audio amplifier to a loudspeaker, which is measured in watts. The amount of electrical power delivered to the loudspeaker and its sensitivity determines the sound power that is generated. The higher the wattage, the better the sound power emitted by the speaker.

## USB Direct



With the USB Direct mode, you can simply select the music on a USB device and play back all your content. All you have to do is plug in your USB device to play back music or export content from the device.

## MP3 Link



The MP3 link connectivity allows direct playback of MP3 content from portable media players. Besides the benefit of enjoying your favourite music in the superior sound quality delivered by the audio system, the MP3 link is also extremely convenient as all you have to do is to plug your portable MP3 player into the audio system.

## Play MP3/WMA-CD, CD and CD-RW



Audio compression technology allows large digital music files to be reduced up to 10 times in size without radically degrading their audio quality. MP3 or WMA are two of the compression formats that let you enjoy a world of digital music on your Philips player. Download MP3 or WMA songs from authorised music sites on the Internet or create your own MP3 or WMA music files by ripping your audio CDs and transferring them onto your player.

# Specifications

## iPod compatibility

- Compatible with: iPod, iPod classic, iPod nano 6th generation, iPod touch, iPod touch 2nd Generation, iPod with colour display, iPod 5th Generation, iPod 5th generation, iPod nano 1st generation, iPod nano 2nd generation, iPod nano 3rd generation, iPod nano 4th generation, iPod nano 5th Generation, iPod touch 4th generation

## iPhone compatibility

- Compatible with: iPhone, iPhone 3G, iPhone 3GS, iPhone 4

## iPad compatibility

- Compatible with: iPad, iPad 2

## Sound

- Output power (RMS): 200 W
- Sound enhancement: digital sound control 4 modes, Dynamic Bass Boost, LivingSound
- Volume control: up/down

## Loudspeakers

- Main Speaker: 5" woofer, Bass Reflex Speaker System
- No. of built-in speakers: 4
- Subwoofer types: passive

## Audio Playback

- Playback Media: CD, CD-R, CD-RW, MP3-CD, WMA-CD, USB flash drive
- Disc Playback Modes: Repeat/one/all/programme, Shuffle Play, 20-Track Programmable, Fast Forward/Reverse, Next/Previous Track Search
- Loader Type: Motorised, Tray
- ID3-tag support
- USB Direct Modes: Fast Reverse/Fast Forward, Play/Pause, Previous/Next, Programme Play, Repeat, Shuffle, Stop
- Cradle playback mode: Charging iPhone, Charging iPod, Charging iPad

## Tuner/Reception/Transmission

- Tuner Bands: FM Stereo
- Auto digital tuning
- Tuner Enhancements: Auto Store
- RDS: Programme Type, Station Name, RDS Clock

## Set

- Station presets: 20
- Antenna: FM antenna

## Connectivity

- Other connections: FM Antenna
- 3.5 mm stereo line in: MP3 Link
- Rear Connections: AUX in

## Convenience

- Alarms: CD Alarm, Radio Alarm, Sleep timer, USB alarm, iPod Alarm
- Clock: On main display, sleep timer
- Display Type: VFD display
- Eco Power Standby: 1 watt
- Indications: DIM mode
- Charging device: iPad, iPhone, iPod
- Display type: VFD display

## Accessories

- Included accessories: AC Power Cord, FM antenna
- Quick start guide: English, German, Dutch, French, Spanish, Italian
- Remote control
- User Manual: 16 languages
- Cables/Connection: 3.5-mm stereo line-in cable, power cord
- Others: User Manual

## Dimensions

- Packaging dimensions (W x H x D): 422 x 1130 x 398 mm
- Gross weight: 18 kg
- Net weight: 14.5 kg
- Main unit depth: 350 mm
- Main unit height: 978 mm
- Main unit width: 350 mm

## Power

- Power supply: 220-240 V, 50 Hz

## Audio playback

- Docking playback modes: fast forward and reverse, next and previous track, play and pause
- Playback media: CD, MP3-CD, USB flash drive, WMA-CD



Issue date 2012-04-20

Version: 6.0.8

12 NC: 8670 000 78437  
EAN: 87 12581 60859 0

© 2012 Koninklijke Philips Electronics N.V.  
All Rights reserved.

Specifications are subject to change without notice.  
Trademarks are the property of Koninklijke Philips  
Electronics N.V. or their respective owners.

[www.philips.com](http://www.philips.com)