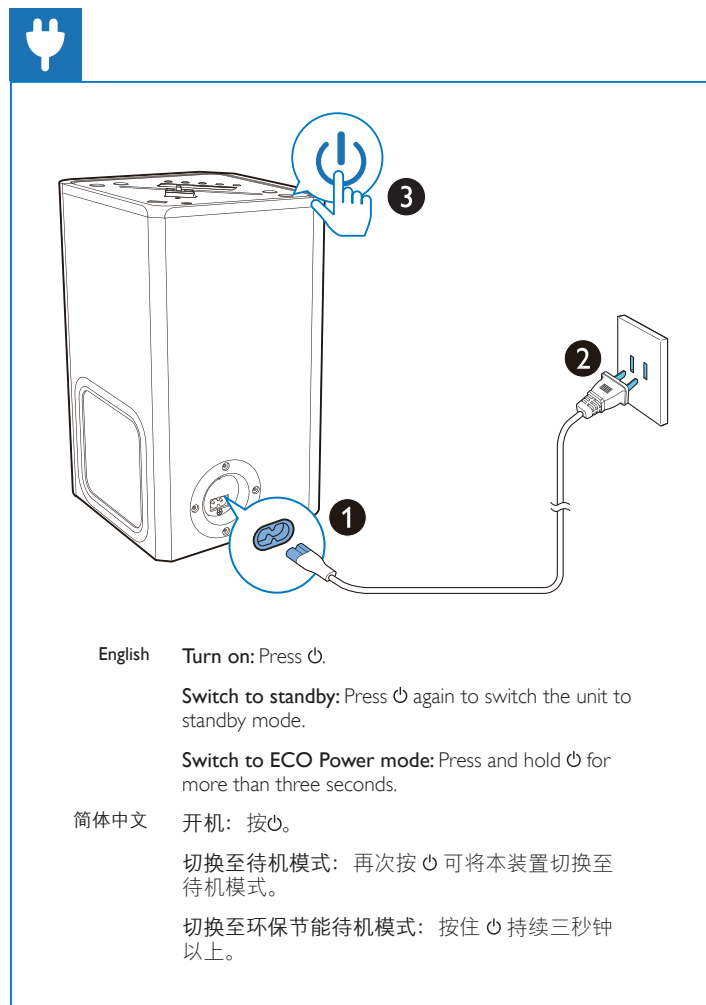
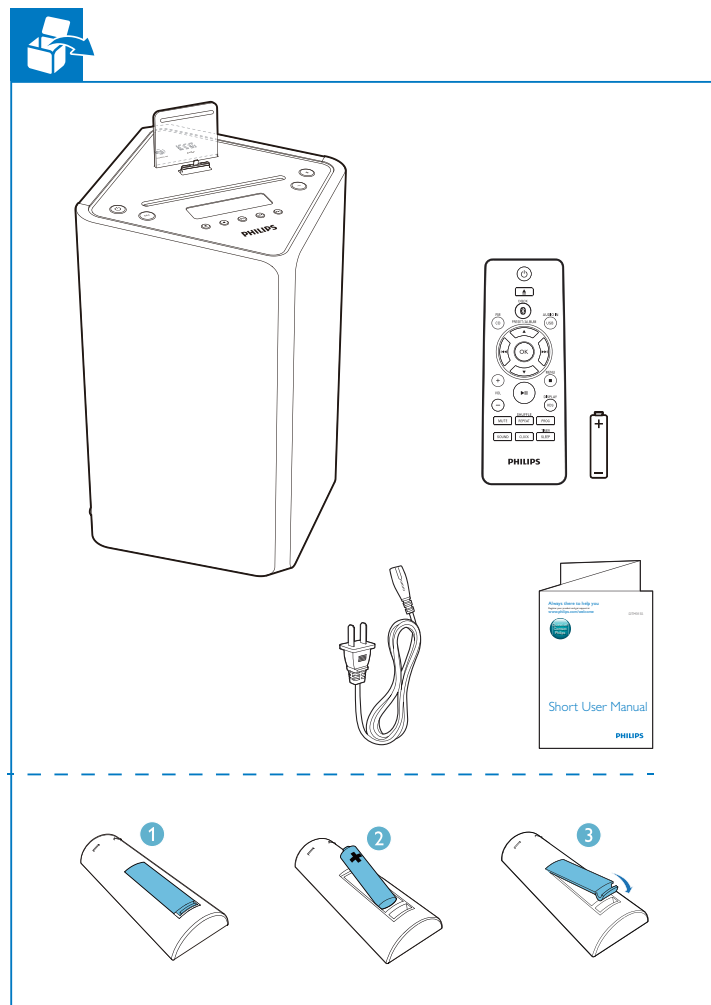




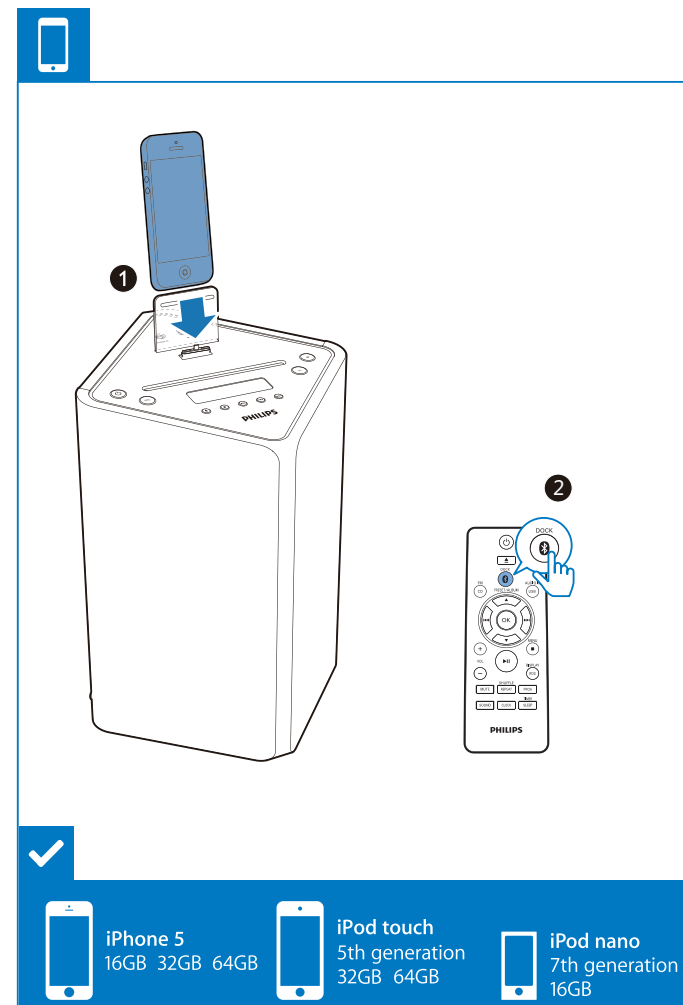
English Short User Manual
简体中文 简明用户手册

PHILIPS



English Turn on: Press **⏻**.
Switch to standby: Press **⏻** again to switch the unit to standby mode.
Switch to ECO Power mode: Press and hold **⏻** for more than three seconds.

简体中文 开机: 按**⏻**。
切换至待机模式: 再次按**⏻**可将本装置切换至待机模式。
切换至环保节能待机模式: 按住**⏻**持续三秒钟以上。



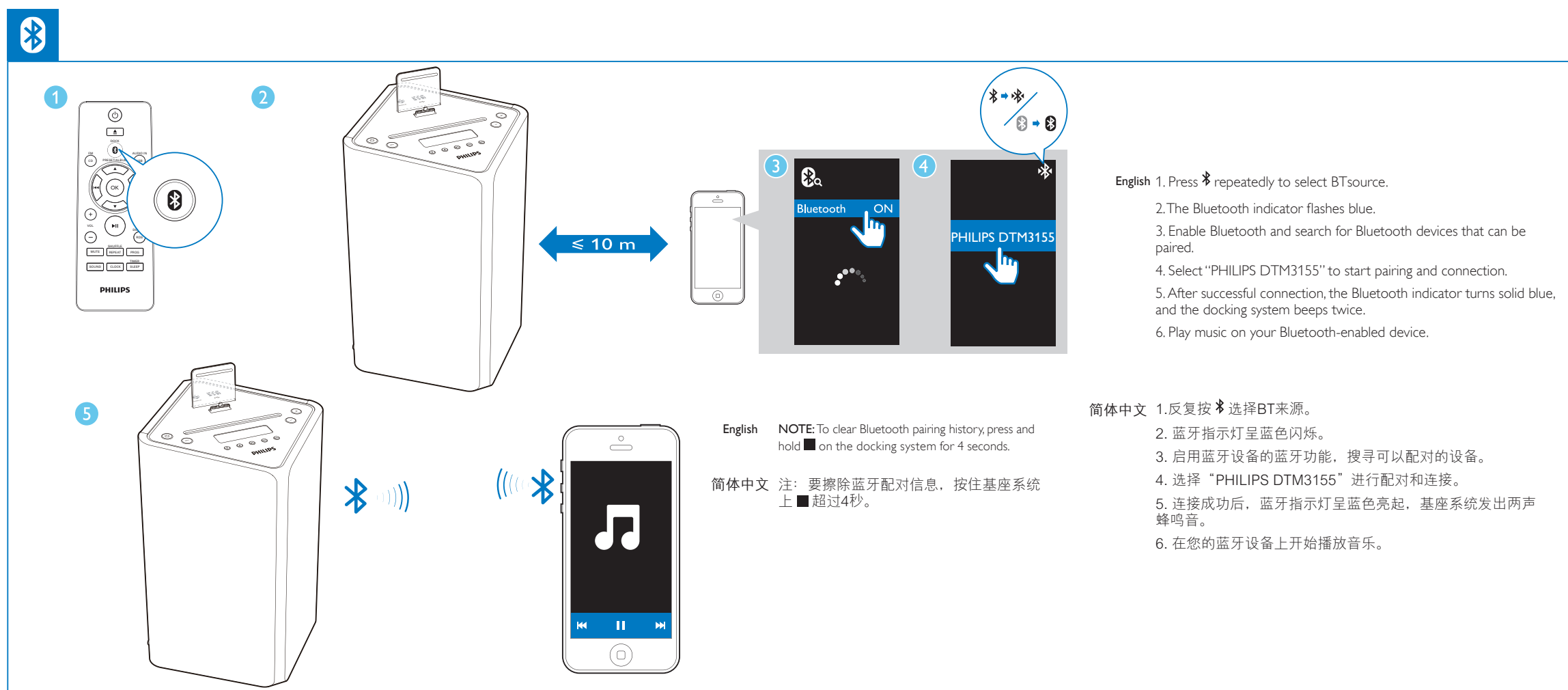
iPhone 5 16GB 32GB 64GB
iPod touch 5th generation 32GB 64GB
iPod nano 7th generation 16GB

English 1. Insert the iPod/iPhone in the dock. Press **SRC** repeatedly to select iPod/iPhone source.
2. Play music on iPod/iPhone.

简体中文 1. 将 iPod/iPhone 插接到底座中。反复按 **SRC** 可选择 iPod/iPhone 来源。
2. 播放 iPod/iPhone 中的音乐。

English **!** If the docking system goes to Eco power mode for energy saving, press **⏻** to turn on the docking system or press and hold **⏻** to switch it to standby mode first to make sure the docked iPod/iPhone can charge normally.

简体中文 如果底座系统进入环保节能模式以节能, 可按 **⏻** 开机或按住 **⏻** 将底座系统先切换至待机模式, 以确保所插接的 iPod/iPhone 可以正常充电。

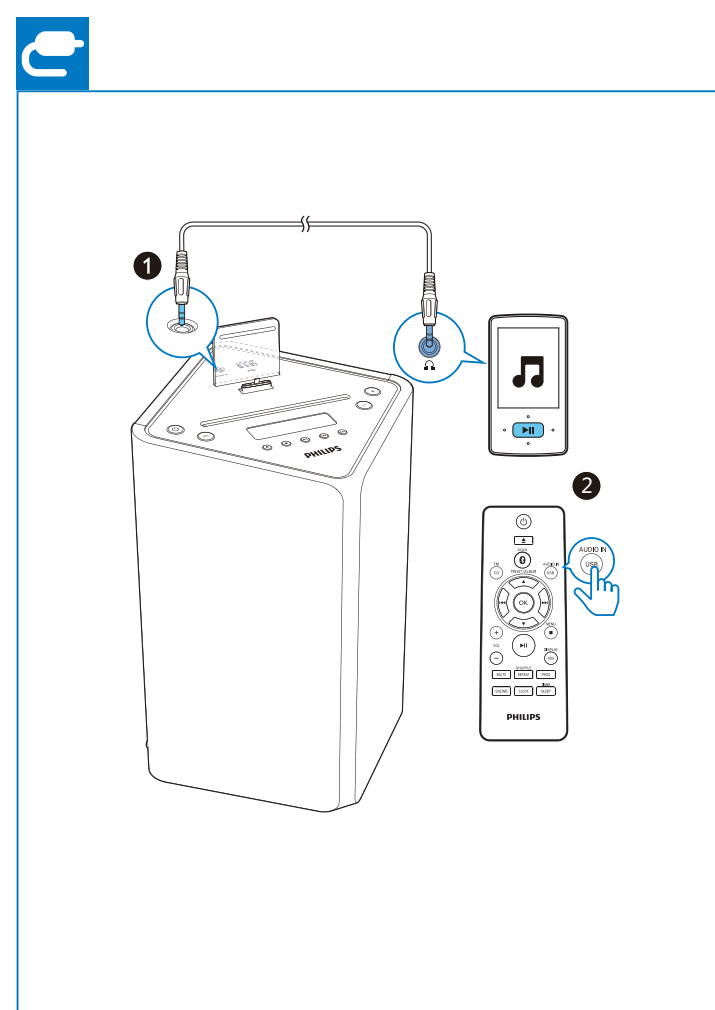


English 1. Press **SRC** repeatedly to select BT source.
2. The Bluetooth indicator flashes blue.
3. Enable Bluetooth and search for Bluetooth devices that can be paired.
4. Select "PHILIPS DTM3155" to start pairing and connection.
5. After successful connection, the Bluetooth indicator turns solid blue, and the docking system beeps twice.
6. Play music on your Bluetooth-enabled device.

English NOTE: To clear Bluetooth pairing history, press and hold **⏻** on the docking system for 4 seconds.

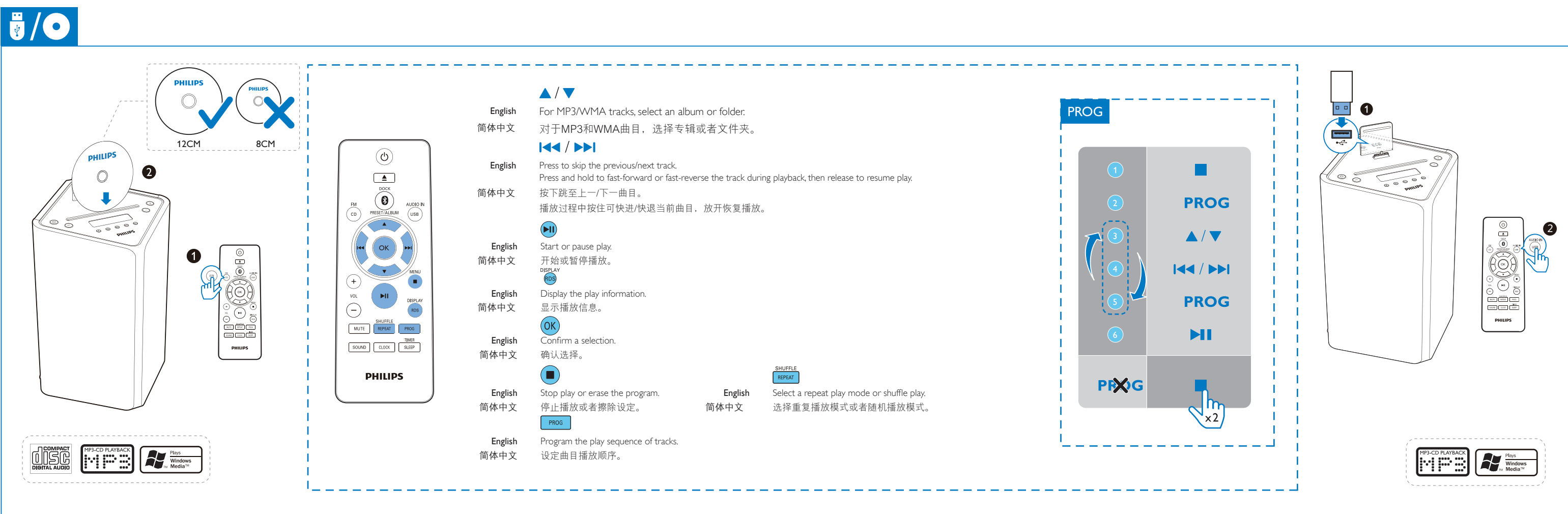
简体中文 注: 要擦除蓝牙配对信息, 按住底座系统上 **⏻** 超过4秒。

简体中文 1. 反复按 **SRC** 选择BT来源。
2. 蓝牙指示灯呈蓝色闪烁。
3. 启用蓝牙设备的蓝牙功能, 搜寻可以配对的设备。
4. 选择 "PHILIPS DTM3155" 进行配对和连接。
5. 连接成功后, 蓝牙指示灯呈蓝色亮起, 底座系统发出两声蜂鸣音。
6. 在您的蓝牙设备上开始播放音乐。



English If no FM stations are stored, the system prompts you to store all the available FM stations.

简体中文 如果没有存储电台, 系统可存储所有可用的电台。



English For MP3/WMA tracks, select an album or folder.
简体中文 对于MP3和WMA曲目, 选择专辑或者文件夹。

English Press to skip the previous/next track. Press and hold to fast-forward or fast-reverse the track during playback, then release to resume play.
简体中文 按下跳至上一/下一曲目。播放过程中按住可快进/快退当前曲目, 松开恢复播放。

English Start or pause play.
简体中文 开始或暂停播放。

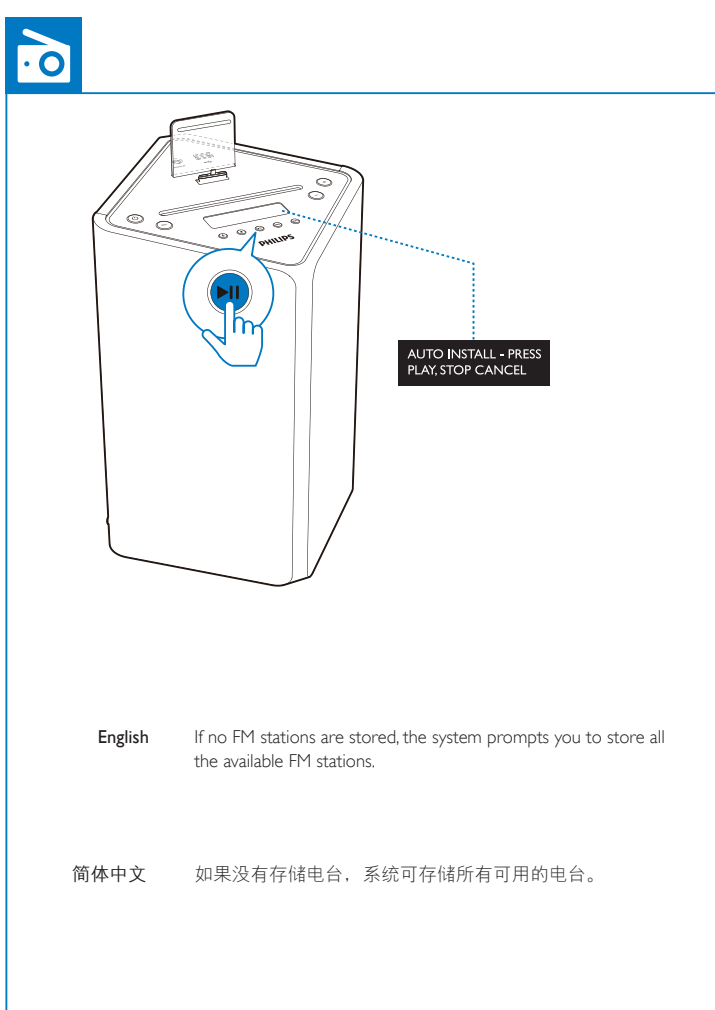
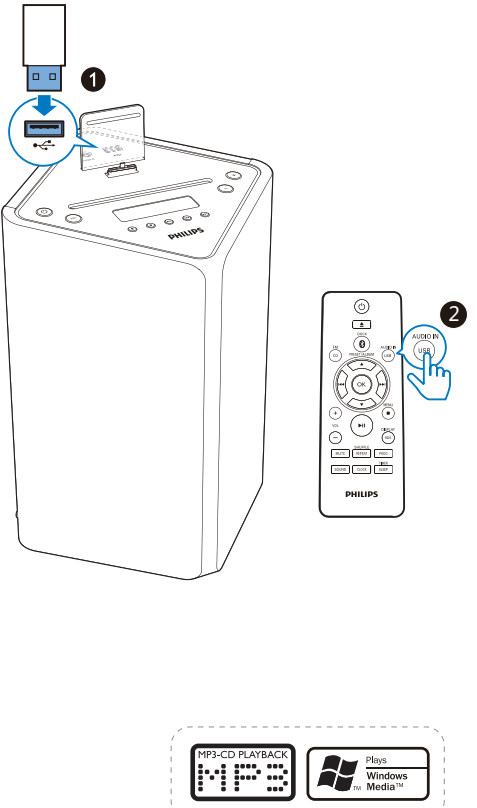
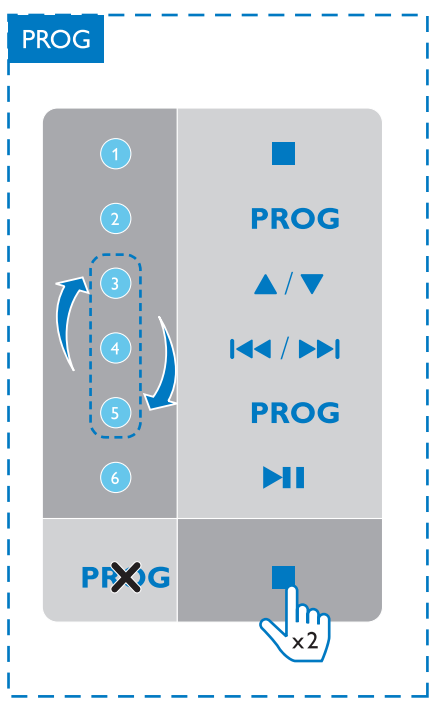
English Display the play information.
简体中文 显示播放信息。

English Confirm a selection.
简体中文 确认选择。

English Stop play or erase the program.
简体中文 停止播放或者擦除设定。

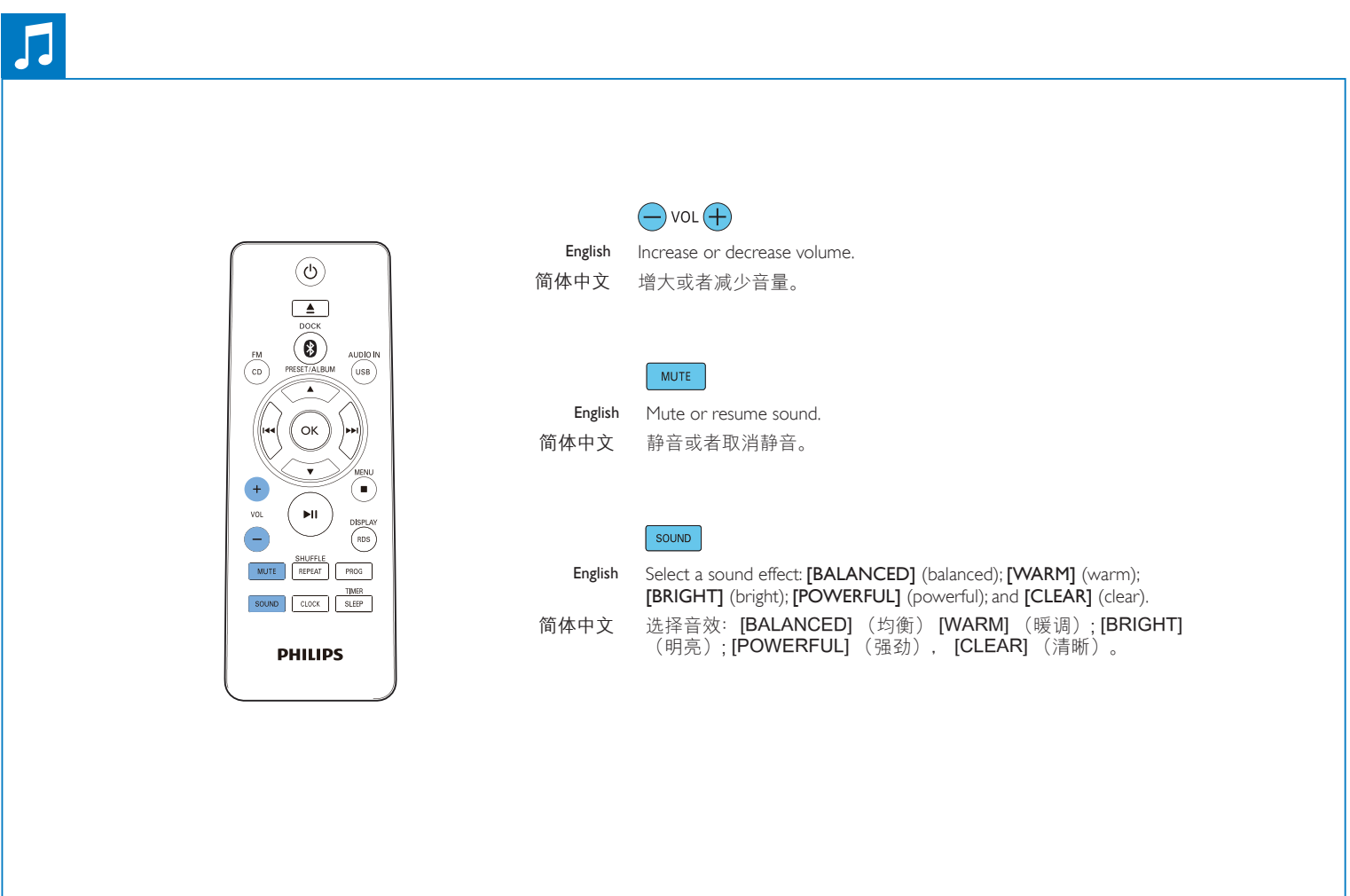
English Program the play sequence of tracks.
简体中文 设定曲目播放顺序。

English Select a repeat play mode or shuffle play.
简体中文 选择重复播放模式或者随机播放模式。



English If no FM stations are stored, the system prompts you to store all the available FM stations.

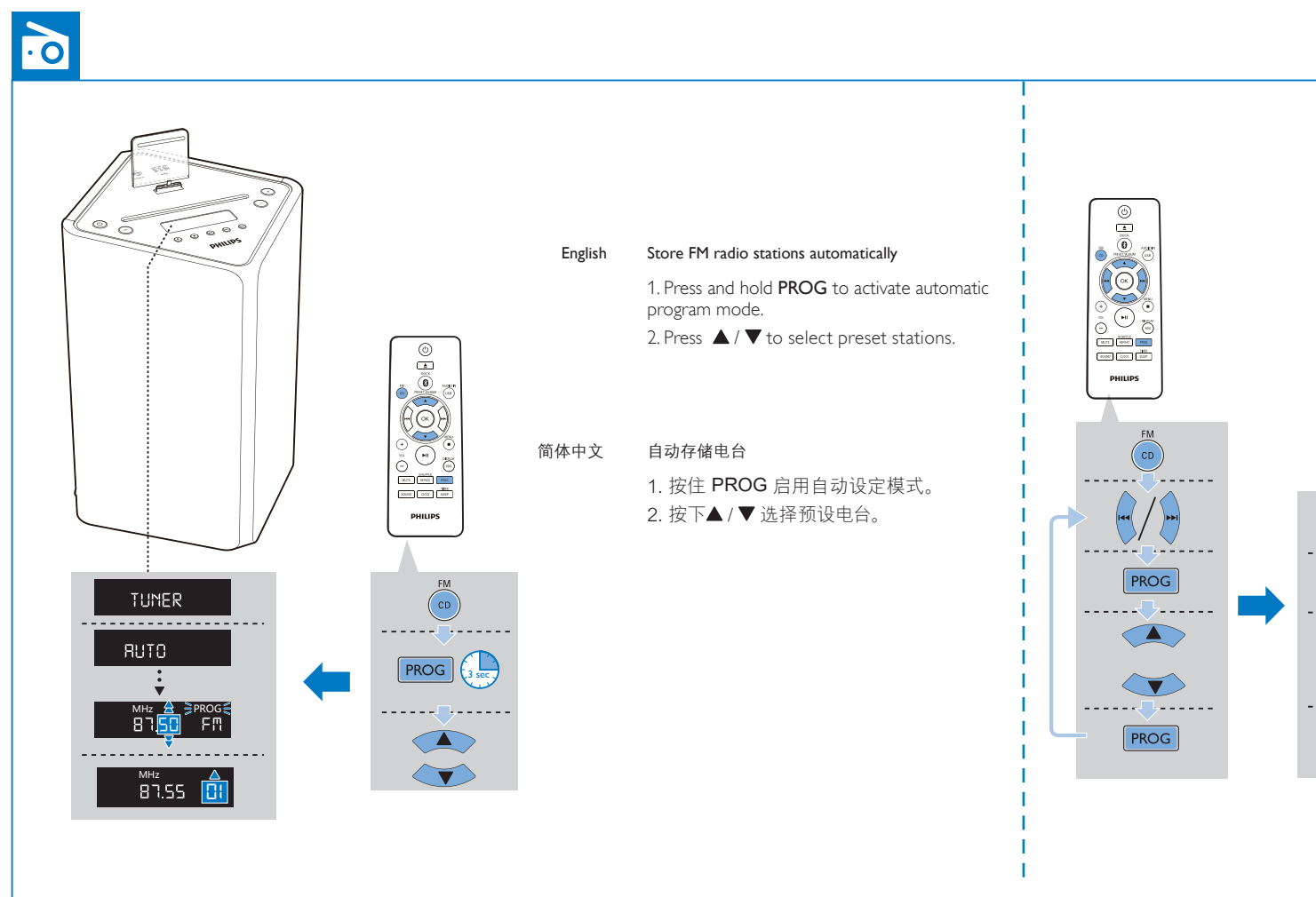
简体中文 如果没有存储电台, 系统可存储所有可用的电台。



English Increase or decrease volume.
简体中文 增大或者减少音量。

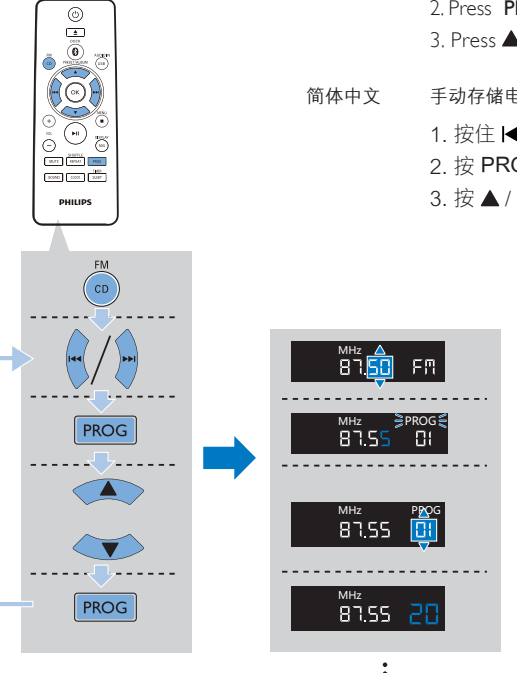
English Mute or resume sound.
简体中文 静音或者取消静音。

English Select a sound effect: [BALANCED] (balanced); [WARM] (warm); [BRIGHT] (bright); [POWERFUL] (powerful); and [CLEAR] (clear).
简体中文 选择音效: [BALANCED] (均衡) [WARM] (暖调); [BRIGHT] (明亮); [POWERFUL] (强劲); [CLEAR] (清晰)。



English Store FM radio stations manually
1. Press and hold **PROG** to activate automatic program mode.
2. Press **▲/▼** to select preset stations.

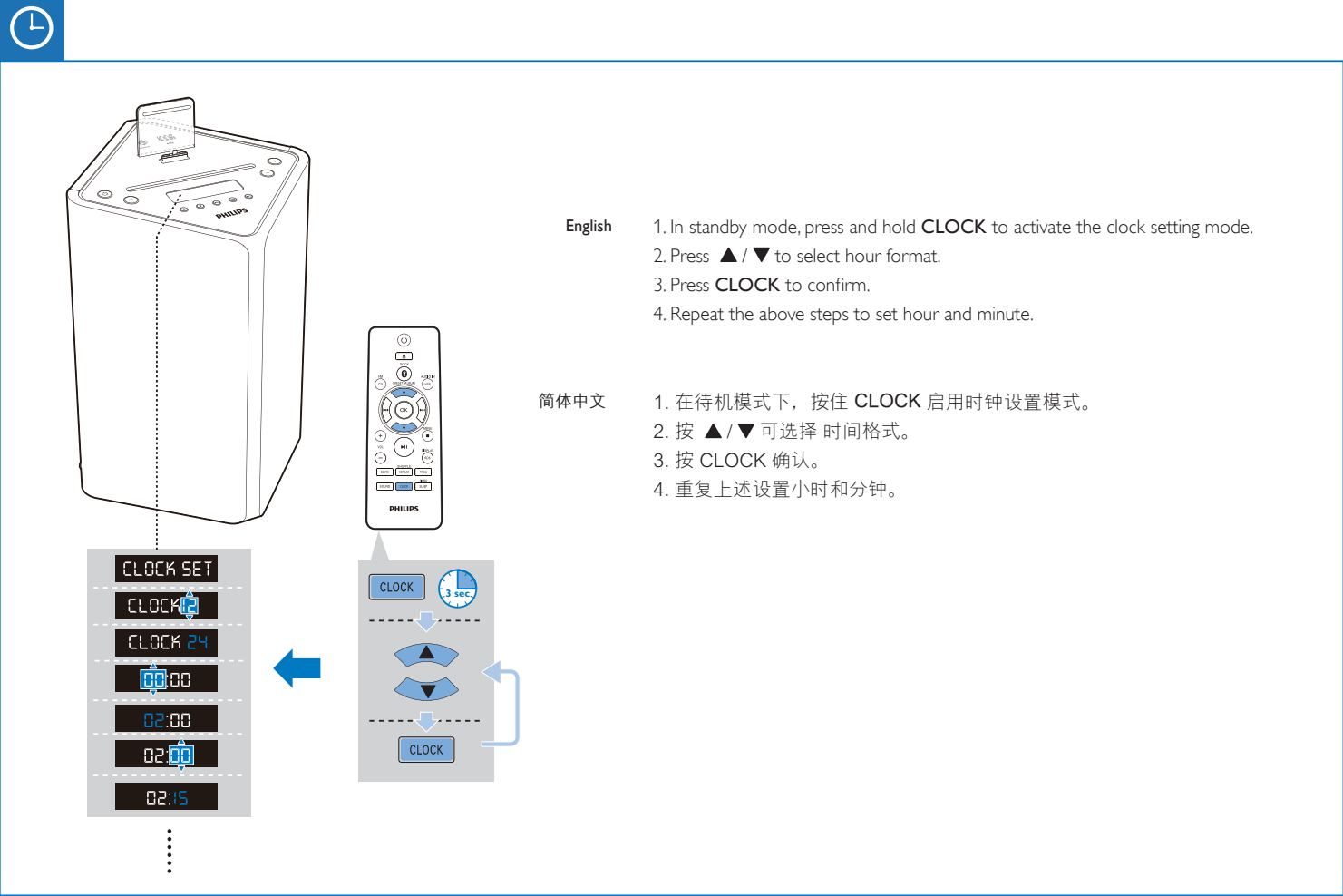
简体中文 自动存储电台
1. 按住 **PROG** 启用自动设定模式。
2. 按下 **▲/▼** 选择预设电台。



English Store FM radio stations manually
1. Press and hold **◀/▶** to tune to a radio station.
2. Press **PROG** to activate program mode.
3. Press **▲/▼** to allocate a preset number then press **PROG** to confirm.

简体中文 手动存储电台
1. 按住 **◀/▶** 调谐至电台。
2. 按 **PROG** 激活设定模式。
3. 按 **▲/▼** 可为该电台分配编号, 然后按 **PROG** 确认。

English **OK** Switch between mono and stereo broadcast.
简体中文 在单声道广播和双声道广播之间切换。

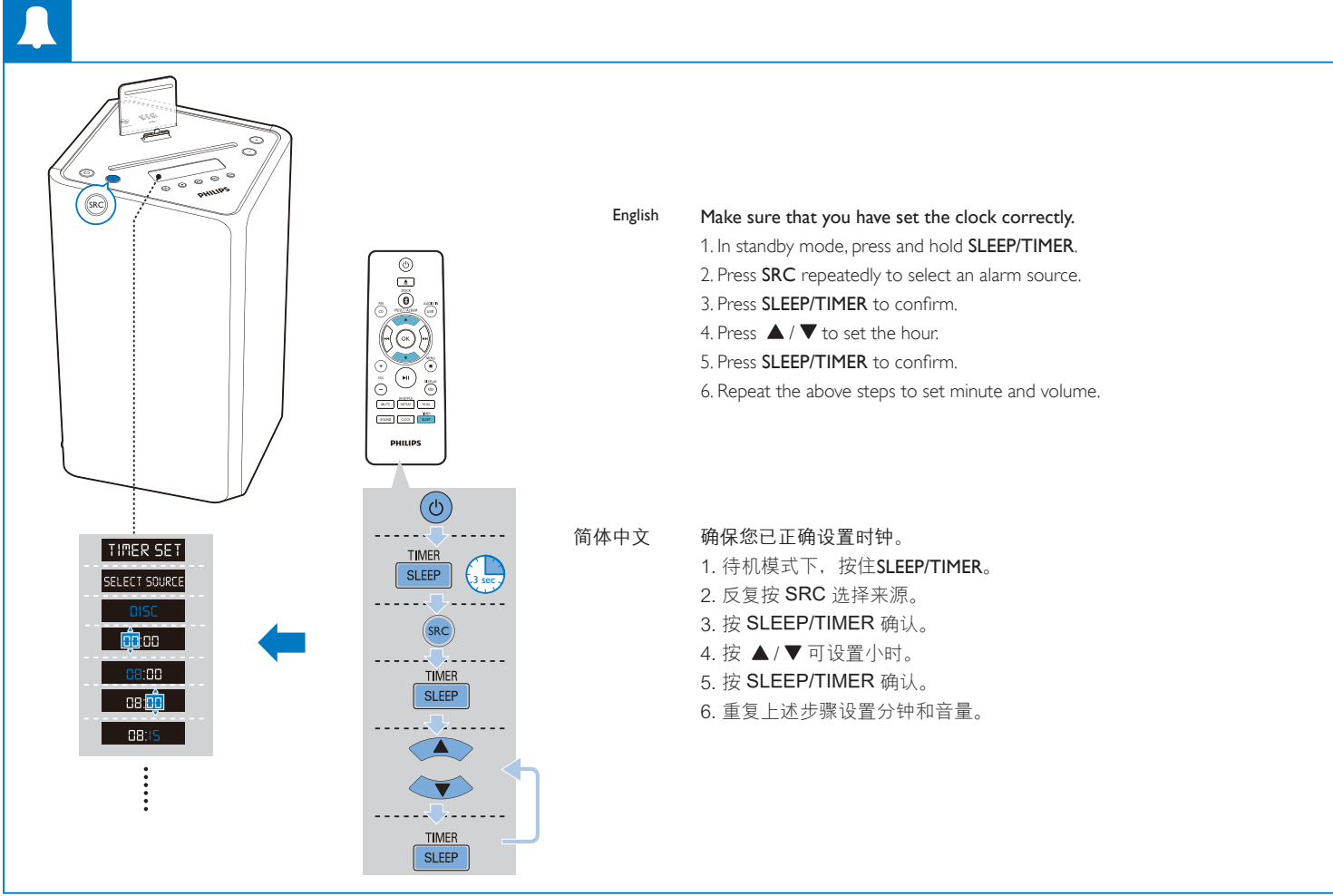


English

1. In standby mode, press and hold **CLOCK** to activate the clock setting mode.
2. Press **▲/▼** to select hour format.
3. Press **CLOCK** to confirm.
4. Repeat the above steps to set hour and minute.

简体中文

1. 在待机模式下, 按住 **CLOCK** 启用时钟设置模式。
2. 按 **▲/▼** 可选择时间格式。
3. 按 **CLOCK** 确认。
4. 重复上述设置小时和分钟。



English

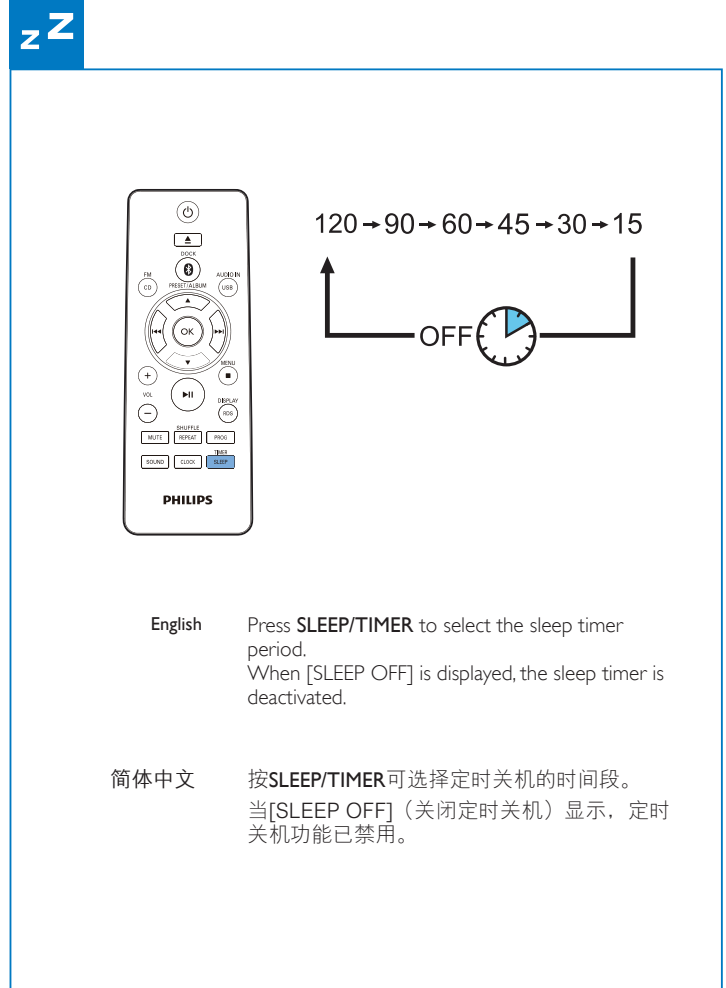
Make sure that you have set the clock correctly.

1. In standby mode, press and hold **SLEEP/TIMER**.
2. Press **SRC** repeatedly to select an alarm source.
3. Press **SLEEP/TIMER** to confirm.
4. Press **▲/▼** to set the hour.
5. Press **SLEEP/TIMER** to confirm.
6. Repeat the above steps to set minute and volume.

简体中文

确保您已正确设置时钟。

1. 待机模式下, 按住 **SLEEP/TIMER**。
2. 反复按 **SRC** 选择来源。
3. 按 **SLEEP/TIMER** 确认。
4. 按 **▲/▼** 可设置小时。
5. 按 **SLEEP/TIMER** 确认。
6. 重复上述步骤设置分钟和音量。

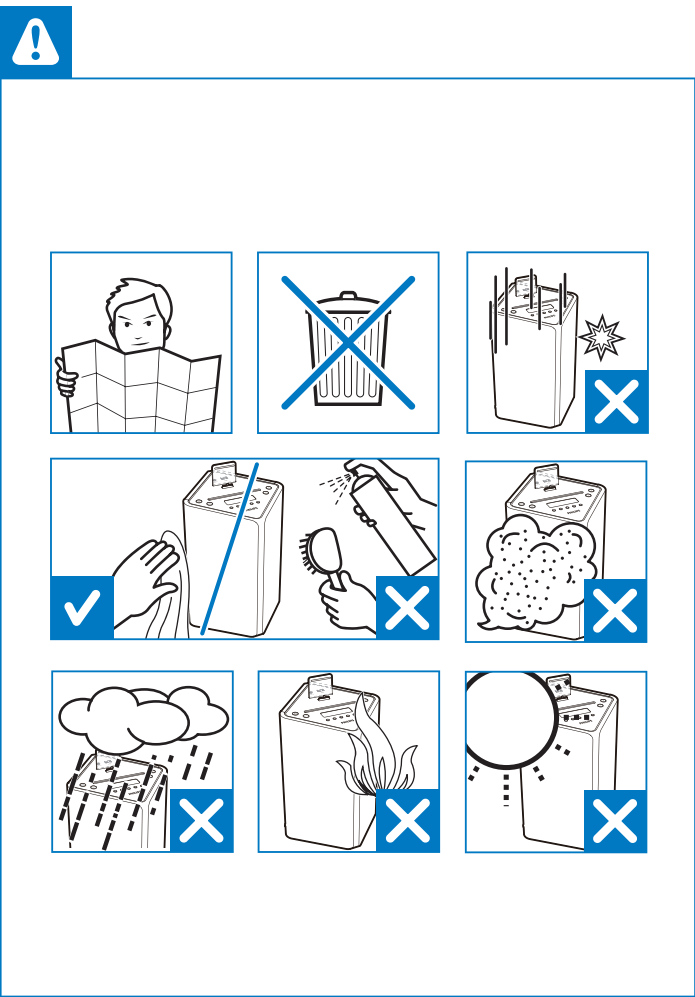


English

Press **SLEEP/TIMER** to select the sleep timer period. When [SLEEP OFF] is displayed, the sleep timer is deactivated.

简体中文

按**SLEEP/TIMER**可选择定时关机的时间段。当[SLEEP OFF] (关闭定时关机) 显示, 定时关机功能已禁用。



English

1 Safety and Notice

Read and understand all instructions before you use this product. If damage is caused by failure to follow the instructions, the warranty does not apply.

Safety

Safety

Warning

- Never remove the casing of this apparatus.
- Never lubricate any part of this apparatus.
- Never look into the laser beam inside this apparatus.
- Never place this apparatus on other electrical equipment.
- Keep this apparatus away from direct sunlight, naked flames or heat.
- Ensure that you always have easy access to the power cord/plug or adaptor to disconnect the apparatus from the power.

- The device shall not be exposed to dripping or splashing.
- Do not place any source of danger on the device (e.g. liquid filled objects, lit candles).
- Where the MAINS plug or an appliance coupler is used as the disconnect device, the disconnect device shall remain readily operable.
- Make sure that there is enough free space around the product for ventilation.
- Only use attachments/accessories specified by the manufacturer.

Disposal of your old product and batteries

Your product is designed and manufactured with high quality materials and components, which can be recycled and reused. Never dispose of your product with other household waste. Please inform yourself about the local rules on the separate collection of electrical and electronic products and batteries. The correct disposal of these products helps prevent potentially negative consequences on the environment and human health. Your product contains batteries, which cannot be disposed of with normal household waste.

Please inform yourself about the local rules on separate collection of batteries. The correct disposal of batteries helps prevent potentially negative consequences on the environment and human health.

Please visit www.recycle.philips.com for additional information on a recycling center in your area.

Compliance

This apparatus includes this label:



Note

- The type plate is located on the bottom of the apparatus.

Notice

Any changes or modifications made to this device that are not expressly approved by Philips Consumer Lifestyle may void the user's authority to operate the equipment.

Environmental information

All unnecessary packaging has been omitted. We have tried to make the packaging easy to separate into three materials: cardboard (box), polystyrene foam (buffer) and polyethylene (bags, protective foam sheet). Your system consists of materials which can be recycled and reused if disassembled by a specialized company. Please observe the local regulations regarding the disposal of packaging materials, exhausted batteries and old equipment.



The making of unauthorized copies of copy-protected material, including computer programs, files, broadcasts and sound recordings, may be an infringement of copyrights and constitute a criminal offence. This equipment should not be used for such purposes.



English

To download the full user manual, visit www.philips.com/support.

简体中文

要下载完整的用户手册, 请访问 www.philips.com/support.



"Made for iPod," and "Made for iPhone," mean that an electronic accessory has been designed to connect specifically to iPod or iPhone, respectively, and has been certified by the developer to meet Apple performance standards. Apple is not responsible for the operation of this device or its compliance with safety and regulatory standards. Please note that the use of this accessory with iPod or iPhone may affect wireless performance. iPod and iPhone are trademarks of Apple Inc., registered in the U.S. and other countries.

Bluetooth

The Bluetooth® word mark and logos are registered trademarks owned by Bluetooth SIG, Inc. and any use of such marks by Philips is under license.



© 2013 CSR plc and its group companies.

The aptX® mark and the aptX logo are trade marks of CSR plc or one of its group companies and may be registered in one or more jurisdictions.

2 Product information

Note

- Product information is subject to change without prior notice.

Specifications

Amplifier	
Maximum Output Power	50W
Frequency Response	45 Hz - 20 kHz, ± 3 dB
Signal to Noise Ratio	> 77 dBA
Audio In Input	600mV RMS 22 k Ω
Disc	
Laser Type	Semiconductor
Disc Diameter	12 cm
Support disc	CD-DA, CD-R, CD-RW, MP3-CD, WMA-CD
Audio DAC	24 Bits / 44.1 kHz
Total Harmonic Distortion	< 0.8% (1 kHz)
Frequency Response	4 Hz -20 kHz (44.1 kHz)
Signal to Noise Ratio	> 77 dBA
Tuner	
Tuning Range	FM: 87.5 - 108 MHz
Tuning grid	50 KHz
Number of presets	20
Sensitivity	
- Mono, 26dB S/N Ratio	< 22 dBf
- Stereo, 46dB S/N Ratio	< 43 dBf
Search Selectivity	< 28 dBf
Total Harmonic Distortion	< 2%
Signal to Noise Ratio	> 55 dB
Speakers	
Speaker Impedance	8 ohm
Speaker Driver	65 mm full range
Sensitivity	>83dB/m/W ±4dB/m/W
General information	
AC power	220V ~, 50Hz
Operation Power Consumption	25 W
USB Direct	Version 2.0HS

Dimensions - Main Unit (W x H x D)	234 x 364 x 239 mm
Weight - Main Unit	2.5 kg
Bluetooth	
Standard	Bluetooth Standard Version 2.1+EDR
Frequency band	2.402~2.480 GHz ISM Band
Range	10m (free space)

简体中文

1 安全和注意事项

请在使用本产品之前阅读并理解所有说明。因未遵守说明而造成的损坏不在保修范围内。

安全

警告

- 切勿拆下本产品的外壳。
- 切勿润滑本装置的任何部件。
- 切勿直视本装置内部发出的激光。
- 切勿将本装置放在其它电器设备上面。
- 应将本装置远离阳光直射、明火或高温。
- 确保始终可以轻松地接触到电源线、电源插头或适配器, 以便于将本装置从电源上断开。

- 切勿将设备暴露在滴水或溅水环境下。
- 不要将任何危险源放在本设备上 (例如装有液体的物体、点燃的蜡烛)。
- 将电源插头或产品耦合器用作断开设备时, 该断开设备应可以随时使用。
- 请确保产品周围有足够的空间进行通风。
- 仅使用制造商指定的附件/配件。
- 主插头用作断路装置, 在不使用时应将插头拔掉, 应保证与电网电源完全切断。

旧产品和电池的處理

本产品采用可回收利用的高性能材料和组件制造而成。切勿将本产品与其它生活垃圾一起处理。请自行了解当地关于分类收集电子、电气产品及电池的规定。正确弃置这些产品有助于避免对环境 and 人体健康造成潜在的负面影响。

本产品所含的电池不能与一般的生活垃圾一同弃置。请自行了解当地关于分类收集电池的规定。正确弃置电池有助于避免对环境 and 人体健康造成潜在的负面影响。

关于您所在地区回收中心的更多信息, 请访问 www.recycle.philips.com。

合规性

本装置包括此标签:



注

- 铭牌(铭牌上的信息包括工作电压,消耗功率)位于主机底部,使用前请了解铭牌上的相关信息。

注意

如果用户未经 Philips 优质生活部门的明确许可而擅自对此设备进行更改或修改, 则可能导致其无权操作此设备。

环境信息

已省去所有不必要的包装。我们努力使包装易于分为三种材料: 纸板 (盒)、泡沫塑料 (缓冲物) 和聚乙烯 (袋、保护泡沫片)。您的系统包含可回收利用的材料 (如果由专业公司拆卸)。请遵守当地有关包装材料、废电池和旧设备的处理的规定。



进行受版权保护材料 (包括计算机程序、文件、广播和录音) 的未授权复制可能会侵犯版权并构成犯罪。不得将此设备用于这些目的。



"Made for iPod" 和 "Made for iPhone" 表示电子附件专为连接 iPod 或 iPhone 而设计, 并经开发人员认证, 符合 Apple 性能标准。Apple 对该设备的操作及其是否符合安全和法规标准不负任何责任。请注意, 通过 iPod 或 iPhone 使用该附件可能影响无线性能。iPod 和 iPhone 是 Apple Inc. 在美国和其它国家和地区注册的商标。

Bluetooth

蓝牙® 词汇和标识均为 Bluetooth SIG, Inc. 所有。Philips 对这些词汇和标识的任何使用均属合法。



© 2013 CSR plc 及其集团公司。aptX® 标志和 aptX 徽标均为 CSR plc 或其任一集团公司的商标, 并且可能已在一个或多个司法管辖区注册。

2 产品信息

注

- 产品信息如有更改, 恕不另行通知。

规格

功放器	
最大输出功率	50 瓦
频率响应	45 赫兹 - 20 千赫, ± 3 dB
信噪比	> 77 dBA
音频输入	600 毫伏 RMS 22 k Ω

光盘	
激光类型	半导体
光盘直径	12 厘米
支持的光盘	CD-DA, CD-R, CD-RW, MP3-CD 和 WMA-CD

音频 DAC	24 位/44.1 千赫
总谐波失真	< 0.8% (1 千赫)
频率响应	4 赫兹 -20 千赫 (44.1 千赫)
信噪比	> 77 dBA

调谐器	
调谐范围	FM: 87.5 - 108 兆赫
调谐栅	50 千赫
预设编号	20

安全

灵敏度	
- 单声道, 26dB 信噪比	<22 dBf
- 立体声, 46dB 信噪比	< 43 dBf
搜索选择	< 28 dBf
总谐波失真	< 2%
信噪比	> 55 dB

扬声器

扬声器阻抗	8 欧姆
扬声器驱动器	65 毫米全频
灵敏度	>83dB/m/W ±4dB/m/W

部件名称 Name of the Parts	有毒有害物质或元素 Hazardous/toxic Substance					
	铅 (Pb, Lead)	汞 (Hg, Mercury)	镉 (Cd, cadmium)	六价铬 (Chromium 6+)	多溴联苯 (PBB)	多溴二苯醚 (PBDE)
Housing 外壳	○	○	○	○	○	○
CD loader CD 光盘	×	○	○	○	○	○
LCD Panel 液晶面板	×	×	○	○	○	○
Loudspeakers 喇叭单元	○	○	○	○	○	○
PWBs 电路板组件	×	○	○	○	○	○
Accessories (Remote control & cables) 附件 (遥控器, 电源线, 连接线)	×	○	○	○	○	○
Batteries in Remote Control (ZnC) 遥控器电池	×	○	○	○	○	○

○: 表示该有毒有害物质在该部件所有均质材料中的含量均在 SJ/T11363 - 2006 标准规定的限量要求以下。
○: Indicates that this toxic or hazardous substance contained in all of the homogeneous materials for this part is below the limit requirement in SJ/T11363 - 2006.

×: 表示该有毒有害物质至少在该部件的某一均质材料中的含量超出 SJ/T11363 - 2006 标准规定的限量要求。

X: Indicates that this toxic or hazardous substance contained in at least one of the homogeneous materials used for this part is above the limit requirement in SJ/T11363 - 2006.



10 环保使用期限 Environmental Protection Use Period

This logo refers to the period (10 years)

电子信息产品中含有的有毒有害物质或元素在正常使用的条件下不会发生外泄或突变, 电子信息产品用户使用该电子信息产品不会对环境造成严重污染或对其人身、财产造成严重损害的期限。

This logo refers to the period (10 years) during which the toxic or hazardous substances or elements contained in electronic information products will not leak or mutate so that the use of these [substances or elements] will not result in any severe environmental pollution, any bodily injury or damage to any assets.