

**PHILIPS**

FC8474, FC8473,  
FC8472, FC8471,  
FC8470





注意事项

2



包装盒内有什么?

3



组装

4



吸力调控

5



使用

6



清洁产品

7

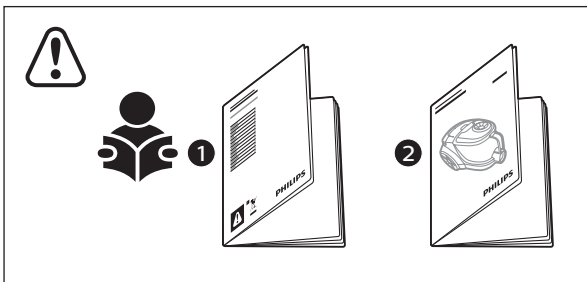


更换过滤网

8

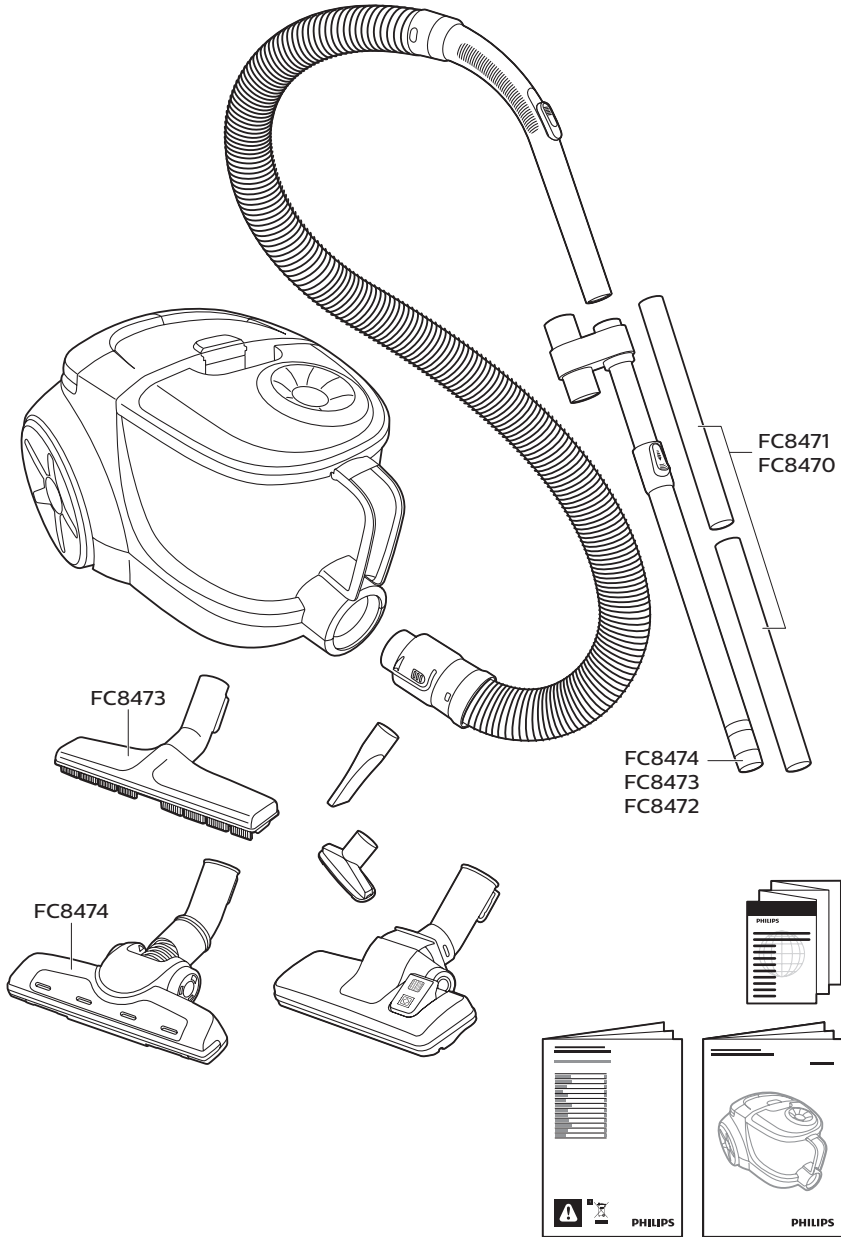


注意事项



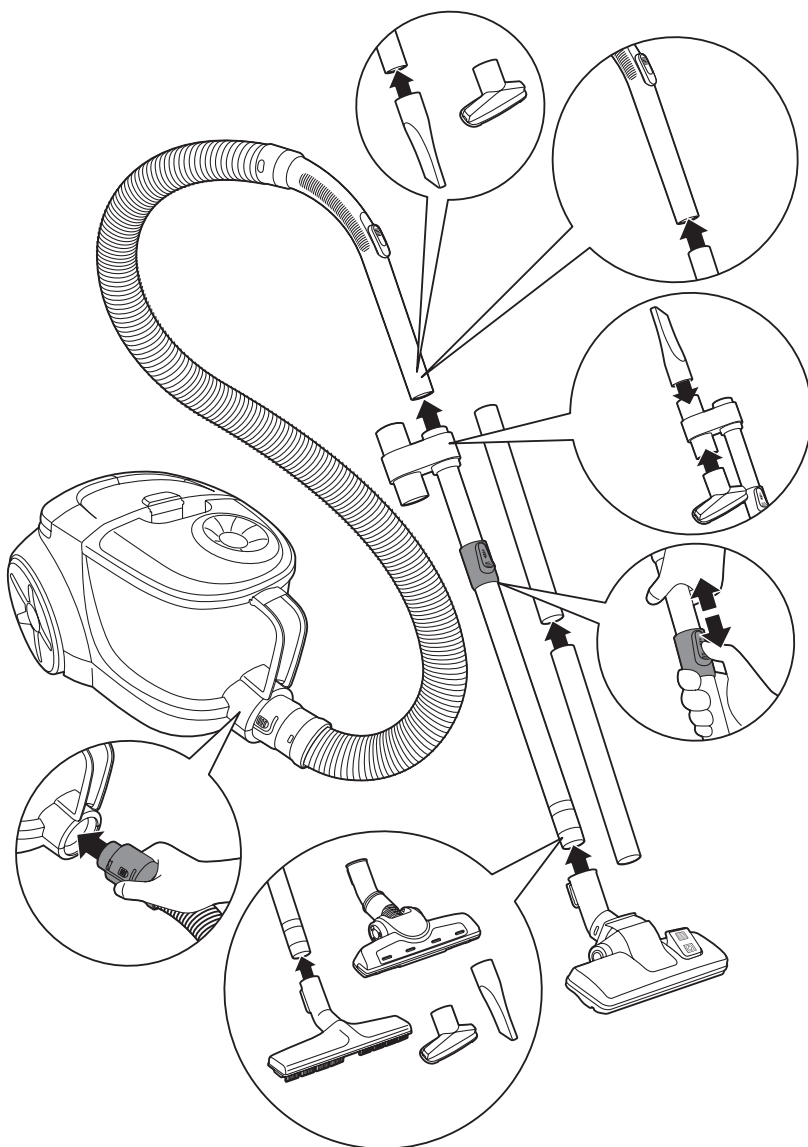


## 包装盒内有什么？





# 组装



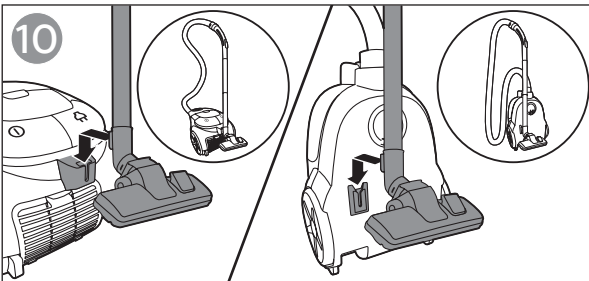
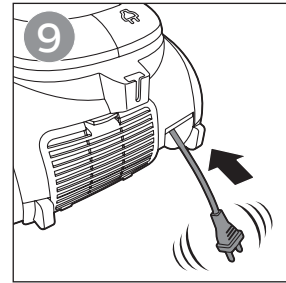
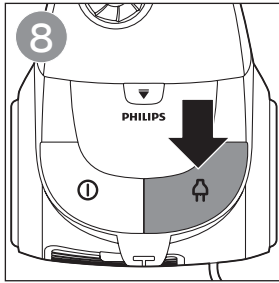
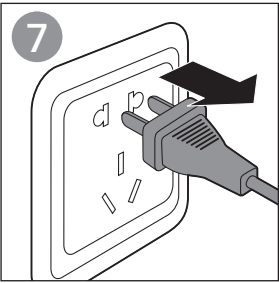
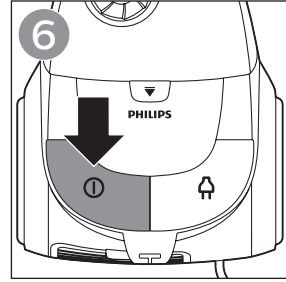
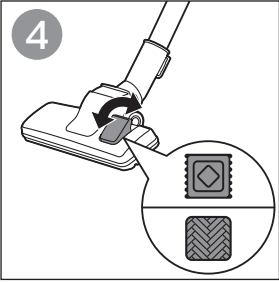
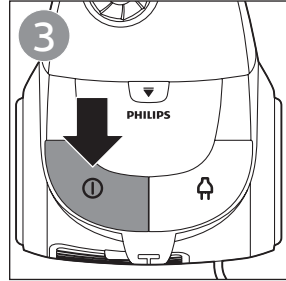
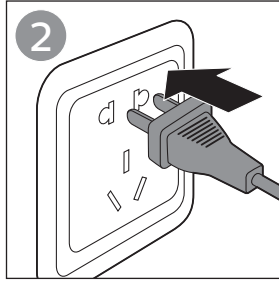
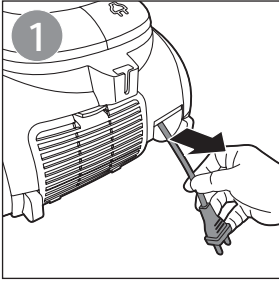


# 吸力调控

FC8474 		
FC8473 		

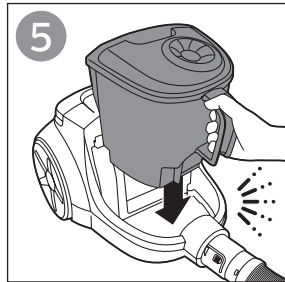
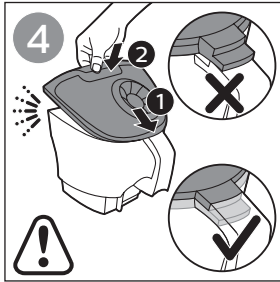
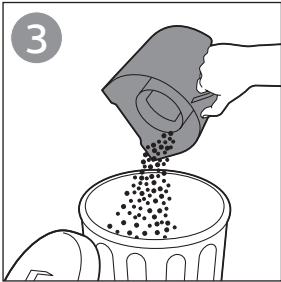
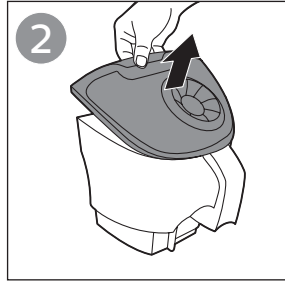
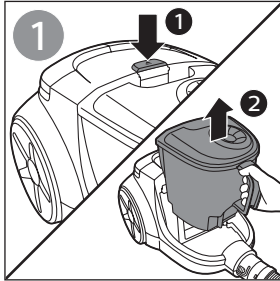
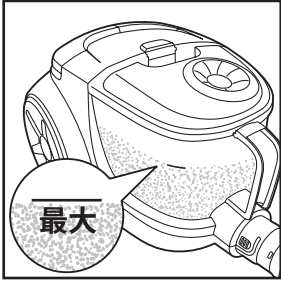


# 使用

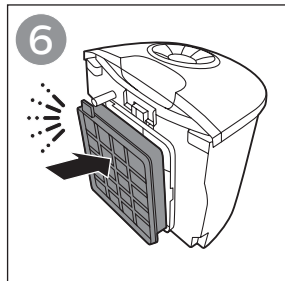
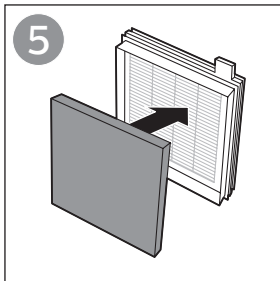
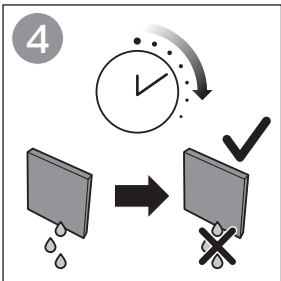
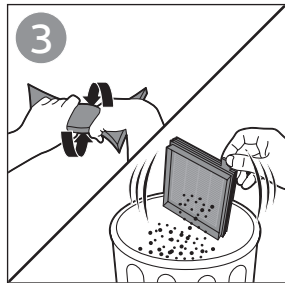
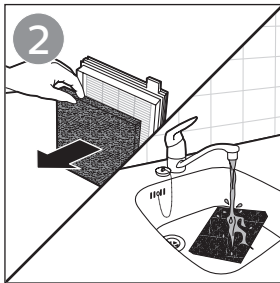
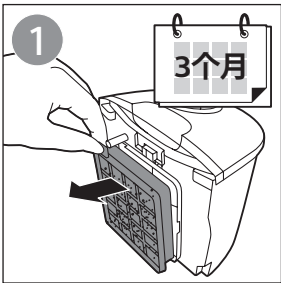




## 清洁产品



## 提示





## 更换过滤网

