

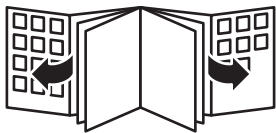
Always here to help you / 始终如一地为您提供帮助

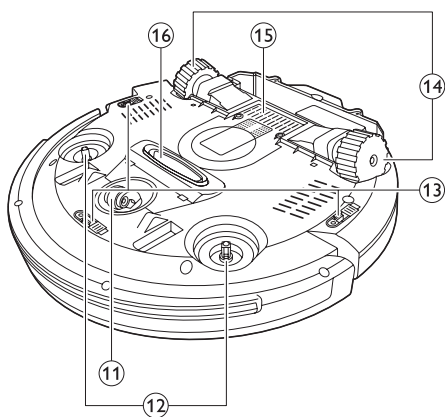
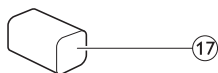
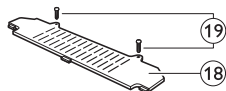
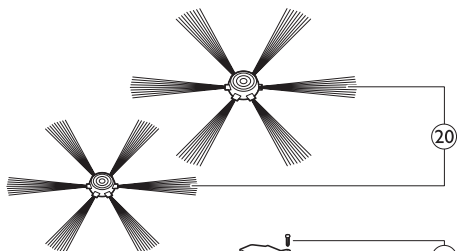
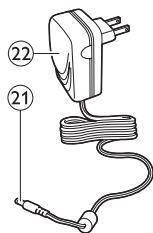
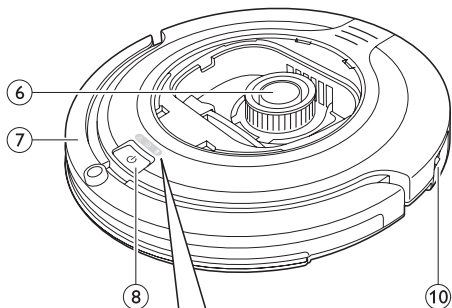
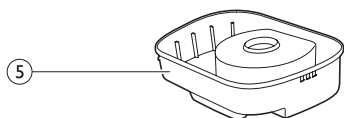
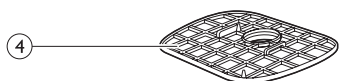
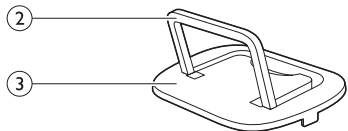
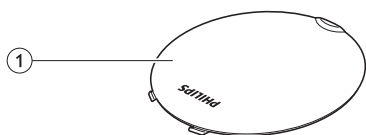
Register your product and get support at / 请登录以下网址并得到相应的帮助
www.philips.com/welcome

FC8603



PHILIPS





Introduction

Congratulations on your purchase and welcome to Philips! To fully benefit from the support that Philips offers, register your product at www.philips.com/welcome.

Your robot (Fig. 1)

- 1 Top cover
- 2 Handle of dust container lid
- 3 Dust container lid
- 4 Filter
- 5 Dust container
- 6 Fan
- 7 Bumper
- 8 On/off button (switches robot on or to standby)
- 9 Display
- 10 Power switch (switches robot on or off)
- 11 Front wheel
- 12 Side brush shafts
- 13 Drop-off sensors
- 14 Wheels
- 15 Battery cavity
- 16 Suction opening
- 17 Rechargeable battery
- 18 Battery cavity cover
- 19 Screws
- 20 Side brushes
- 21 Small plug
- 22 Adapter

Display and remote control

Display

- 1 Warning indicator (Fig. 2)
- 2 On/off indicator
- 3 Dust container full indicator

How your robot works

What your robot cleans

This robot is equipped with features that make it a suitable cleaner to help you clean the floors in your home.

The robot is especially suitable for cleaning hard floors, such as wooden, tiled or linoleum floors. It may experience problems cleaning soft floors, such as carpet or rugs. If you use the robot on a carpet or rug, please stay close by the first time to see if the robot can deal with this type of floor. The robot also needs supervision when you use it on black and shiny hard floors.

How your robot cleans

Cleaning system

The robot has a 2-stage cleaning system to clean your floors efficiently.

- The two side brushes help the robot clean in corners and along walls. They also help to remove dirt loose from the floor and move it towards the suction opening (Fig. 3).
- The suction power of the robot picks up loose dirt and transports it through the suction opening into the dust container (Fig. 4).

Cleaning patterns

In its auto cleaning mode, the robot uses an automatic sequence of cleaning patterns to clean each area of the room optimally. The cleaning patterns it uses are:

- 1 Z-pattern or zigzag pattern
- 2 Random pattern
- 3 Wall-following pattern
- 4 Spiral pattern

During auto cleaning, the robot uses these patterns in a fixed sequence:

- 1 Z-pattern (Fig. 5)
- 2 Random pattern (Fig. 6)
- 3 Wall-following pattern (Fig. 7)
- 4 Spiral pattern (Fig. 8)

When the robot has completed this sequence of patterns, it starts moving in Z-pattern again. The robot continues to use this sequence of patterns to clean the room until the rechargeable battery is empty, or until it is switched off manually.

How your robot avoids height differences

- The robot has three drop-off sensors in its bottom. It uses these drop-off sensors to detect and avoid height differences such as staircases (Fig. 9).

Note: It is normal for the robot to move slightly over the edge of a height difference, as its front drop-off sensor is located behind the bumper.

Caution: In some cases, the drop-off sensors may not detect a staircase or other height difference in time. Therefore monitor the robot carefully the first few times you use it, and when you operate it near a staircase or another height difference.

Before first use

Mounting the side brushes

- 1 Unpack the side brushes and place the robot upside down on a table or on the floor.
- 2 Push the side brushes onto the shafts on the bottom of the robot (Fig. 10).

Note: Make sure you attach the side brushes properly. Press them onto the shaft until you hear them lock into position with a click.

Preparing for use

Charging

When charging for the first time and when the rechargeable battery of the robot is empty, the charging time is four hours.

Note: When the rechargeable battery is fully charged, your robot can clean for up to 100 minutes.

- 1 Insert the small plug of the adapter into the socket on the robot (1). Insert the adapter into a wall socket (2) (Fig. 11).
- 2 Press the power switch to switch on the robot (Fig. 12).
- 3 When the robot is connected to the mains correctly, the on/off indicator starts flashing. This indicates that the robot is charging (Fig. 13).
- 4 When the rechargeable battery is fully charged, the on/off indicator of the robot stops flashing (Fig. 14).
- 5 Remove the small plug from the socket on the robot and remove the adapter from the wall socket (Fig. 15).

Preparing the room for a cleaning run

- Before you start the robot on its cleaning run, make sure that you remove all loose and fragile objects from the floor (Fig. 16).

Using your robot

Starting and stopping

- 1 Press the on/off button.

Note: Make sure that the robot is no longer connected to a wall socket and that the small plug has been removed from the socket on the robot.

- 2 The on/off indicator starts flashing slowly and the robot starts cleaning (Fig. 17).
- 3 The robot cleans until its battery runs low. While cleaning, the robot follows repeated sequences of Z-pattern, random, wall-following and spiral movements (Fig. 18).
- 4 When the battery runs low, the on/off indicator starts flashing quickly and the robot stops (Fig. 19).
- 5 You can press the on/off button to interrupt or stop the cleaning run. If you press the on/off button again and there is still enough energy in the rechargeable battery, the robot continues cleaning.

Indicator signals and their meaning

The robot has a display with three indicators: the warning indicator; the on/off indicator and the dust container full indicator. The table below explains the meaning of the signals these indicators give.

Indicator signal	Meaning
The on/off indicator lights up continuously.	The robot is cleaning.
The on/off indicator flashes quickly.	The rechargeable battery is low.
The dust container full indicator flashes.	The dust container is full.
The warning indicator flashes.	The robot was lifted while it was cleaning.
	The bumper of the robot is stuck.
	A wheel or side brush is stuck.
	The top cover is not present or is not closed properly.

Cleaning and maintenance

Emptying and cleaning the dust container

Empty and clean the dust container when the dust container full indicator flashes.

- 1 Remove the top cover (Fig. 20).

Note: Make sure the power switch is in 'off' position.

- 2 Pull up the handle of the dust container lid and lift the dust container out of the dust container compartment (Fig. 21).

Note: When you remove or reinsert the dust container, take care not to damage the blades of the motor fan.

- 3 Carefully lift the lid off the dust container and take out the filter (Fig. 22).

- 4 Shake the dust container over a dustbin to empty it. Clean the filter and the inside of the dust container with a cloth or a toothbrush with soft bristles. Also clean the suction opening in the bottom of the dust container (Fig. 23).

Caution: Do not clean the dust container and the filter with water or in the dishwasher.

- 5 Put the filter back into the dust container. Then place the lid on the dust container (Fig. 24).
- 6 Put the dust container back into the dust container compartment and put the top cover back on the robot (Fig. 25).

Caution: Always make sure the filter is present inside the dust container. If you use the robot without the filter inside the dust container, the motor will be damaged.

Cleaning sensors, wheels and side brushes

To maintain good cleaning performance, you have to clean the drop-off sensors, the wheels and the side brushes from time to time.

- 1 Make sure the power switch is in 'off' position.
- 2 Place the robot upside down on a flat surface.
- 3 Use a brush with soft bristles (e.g. a toothbrush) to remove dust or fluff from the drop-off sensors. Also check if there is any dirt or fluff blocking the suction opening (Fig. 26).

Note: It is important that you clean the drop-off sensors regularly. If the drop-off sensors are dirty, the robot may fail to detect height differences.

- 4 Use a brush with soft bristles (e.g. a toothbrush) to remove dust or fluff from the front wheel and side wheels (Fig. 27).
- 5 To clean the side brushes, grab them by the bristles and pull them off their shafts (Fig. 28).
- 6 Remove fluff, hairs and threads from the shaft and from the side brush with a soft brush (e.g. a toothbrush) or a cloth (Fig. 29).
- 7 Check the side brushes and the bottom of the robot for any sharp objects that could damage your floor.

Replacement

You can order spareparts and accessories at www.shop.philips.com/service or at your Philips dealer. You can also contact the Philips Consumer Care Centre in your country.

Replacing the filter

Replace the filter if it is very dirty or damaged. You can order a new filter under order number CP0108. See 'Emptying and cleaning the dust container' in chapter 'Cleaning and maintenance' for instructions on how to remove the filter from the dust container and how to place it in the dust container.

Replacing the side brushes

Replace the side brushes after some time to ensure proper cleaning results.

Note: Always replace the side brushes when you notice signs of wear or damage. We also recommend that you replace both side brushes at the same time. You can order spare side brushes as a set under order number CP0107.

- 1 Make sure that the on/off switch is in 'off' position.
- 2 To replace the side brushes, grab the old side brushes by the bristles and pull them off their shafts.
- 3 Push the new side brushes onto the shafts (Fig. 10).

Replacing the rechargeable battery

Replace the rechargeable battery when you can no longer recharge it or when it runs out of power quickly. You can order a new rechargeable battery under order number CP0111 for FC8710 and order number CP0110 for FC8700.

- 1 Let the robot run until the rechargeable battery is empty to make sure that the rechargeable battery is completely discharged before you remove it and dispose of it.
- 2 Undo the screws of the battery cavity cover (Fig. 30).
- 3 Remove the battery cavity cover (Fig. 31).
- 4 Place the new rechargeable battery in the battery cavity, put back the battery cavity cover and tighten the screws (Fig. 32).

Note: Make sure that the print on the battery points upwards and that the connectors point in the right direction.

- 5 Place the battery cavity cover back onto the robot and fasten it with the screws.

Troubleshooting

This chapter summarises the most common problems you could encounter with this appliance. If you are unable to solve the problem with the information below, visit www.philips.com/support for a list of frequently asked questions or contact the Consumer Care Centre in your country.

Problem	Cause	Solution
The robot does not start cleaning when I press the on/off button.	The rechargeable battery is empty.	Charge the rechargeable battery (see chapter 'Preparing for use').
	The small plug is still inserted in the socket on the robot.	The robot does not work on mains power. It only works on its rechargeable battery. Therefore, always disconnect the adapter from the robot and the mains before use.
The warning indicator flashes quickly.	One or both wheels are stuck.	Set the power switch to 'off'. Remove the fluff, hair, thread or wire that is caught around the wheel suspension.
	One or both side brushes are stuck.	Clean the side brushes (see chapter 'Cleaning and maintenance').
	The top cover is not present or is not closed properly.	When the top cover is not present or is not closed properly, the robot does not work. Place the top cover on the robot properly.
	The bumper is stuck.	Press the on/off button. Lift the robot so that its bumper comes free. Place the robot at some distance from the obstacle and press the on/off button to make it resume cleaning.
	The robot was lifted while it was cleaning.	Press the on/off button. Place the robot on the floor. Then press the on/off button to make the robot resume cleaning.

Problem	Cause	Solution
The robot does not clean properly.	The bristles of one or both side brushes are crooked or bent.	Soak the brush or brushes in warm water for a while. If this does not restore the bristles to their proper shape, replace the side brushes (see chapter 'Replacement').
	The filter in the dust container is dirty.	Clean the filter in the dust container with a cloth or a toothbrush with soft bristles.
		If brushing does not help to clean the filter, replace the filter with a new one. We advise you to replace the filter at least once a year.
	The suction opening in the bottom of the dust container is clogged.	Clean the suction opening (see chapter 'Cleaning and maintenance').
	The front wheel is jammed with hair or other dirt.	Clean the front wheel (see chapter 'Cleaning and maintenance').
	The robot is cleaning a dark or black surface, which triggers the drop-off sensors. This causes the robot to move in an unusual pattern.	Press the on/off button and then move the robot to a lighter coloured piece of the floor. If the problem continues to occur on lighter coloured floors, please go to www.philips.com/support or contact the Consumer Care Centre in your country.
	The robot is cleaning a floor that reflects sunlight quite strongly. This triggers the drop-off sensors and causes the robot to move in an unusual pattern.	Close the curtains to block sunlight from entering the room.
The rechargeable battery can no longer be charged or runs empty very fast.	The rechargeable battery has reached the end of its life.	Replace the rechargeable battery (see chapter 'Replacement').

简介

感谢您的惠顾，欢迎光临飞利浦！为了您能充分享受飞利浦提供的支持，请在 www.philips.com/welcome 上注册您的产品。

您的吸尘器 (图 1)

- 1 上盖
- 2 集尘桶盖手柄
- 3 集尘盒盖
- 4 过滤网
- 5 集尘桶
- 6 风扇
- 7 缓冲型
- 8 开/关按钮 (打开智能自动真空吸尘器或切换至待机模式)
- 9 显示屏
- 10 电源开关 (打开或关闭智能自动真空吸尘器)
- 11 前轮
- 12 侧毛刷轴
- 13 跌落传感器
- 14 滚轮
- 15 电池仓
- 16 吸口
- 17 可充电电池
- 18 电池仓盖
- 19 螺钉
- 20 侧毛刷
- 21 小插头
- 22 适配器

显示屏和遥控器

显示屏

- 1 警告指示灯 (图 2)
- 2 开/关指示灯
- 3 集尘桶满盛指示灯

吸尘器如何工作

吸尘器清洁哪些物体

本吸尘器具有许多功能，是一款适合帮助您在家中清洁地板的理想清洁工具。智能自动真空吸尘器尤其适合清洁硬地板，如木地板、陶瓷地板或油毡地板。清洁软地板时可能会出现問題，例如地毯或小地毯。如果您在地毯或小地毯上使用智能自动真空吸尘器，首次使用时请守在旁边，看智能自动真空吸尘器是否能清洁此类地板。清洁反光的黑色硬地板时也需要有人监管。

吸尘器如何清洁

清洁系统

吸尘器具有 2 重清洁系统来高效清洁地板。

- 两个侧毛刷可帮助智能自动真空吸尘器在角落、沿墙壁清洁。还有助于清除地板上的浮尘，将其移至吸口。(图 3)
- 吸尘器的吸力可吸入松动的污垢，然后通过吸口将污垢输送到集尘桶。(图 4)

清洁方向图

在自动清洁模式下，智能自动真空吸尘器使用自动顺序清洁方向图优化清洁房间内各区域。其会使用以下清洁方向图：

- 1 Z 方向图或之字形方向图
- 2 随机方向图
- 3 沿墙方向图
- 4 螺旋方向图

在自动清洁期间，智能自动真空吸尘器以固定顺序使用这些方向图：

- 1 Z 方向图 (图 5)
- 2 随机方向图 (图 6)
- 3 沿墙方向图 (图 7)
- 4 螺旋方向图 (图 8)

如果智能自动真空吸尘器已完成此顺序的方向图，则将重新以 Z 方向图开始移动。智能自动真空吸尘器继续使用该顺序的方向图清洁房间，直至充电电池的电量耗尽或将其手动关闭。

智能自动真空吸尘器如何避开高度差

- 智能自动真空吸尘器底部具有三个跌落传感器。其使用这些跌落传感器检测和避开楼梯等高度差。(图 9)

注意：智能自动真空吸尘器轻轻移动以越过高度差的边缘是正常现象，因为正面的跌落传感器位于缓冲装置后面。

警告：在某些情况下，跌落传感器可能无法及时检测到楼梯或其他高度差。因此，在最初几次使用以及在楼梯或其他高度差附近使用时，要仔细监控智能自动真空吸尘器的工作。

首次使用之前

安装侧毛刷

- 1 打开侧毛刷包装，将智能自动真空吸尘器正面朝下置于桌子或地板上。
- 2 将侧毛刷推入吸尘器底部的轴上。(图 10)

注意：确保您已正确安装侧毛刷。将侧毛刷按在轴上，直到您听到其咔哒一声锁定到位。

使用准备

充电

首次充电及智能自动真空吸尘器的充电电池电量耗尽时，需充电 4 小时。

注意：充电电池充满电后，智能自动真空吸尘器可以清洁长达 100 分钟。

- 1 将适配器的小插头插入智能自动真空吸尘器的插座 (1)。将适配器插入电源插座 (2)。(图 11)
- 2 按电源开关打开智能自动真空吸尘器。(图 12)
- 3 将智能自动真空吸尘器正确连接至电源时，开/关指示灯将开始闪烁。这表示正在充电。(图 13)
- 4 充电电池充满电后，智能自动真空吸尘器的开/关指示灯将停止闪烁。(图 14)
- 5 将小插头从智能自动真空吸尘器的插座中拔出，将适配器从电源插座上拔出。(图 15)

准备房间以进行清洁操作

- 在启动智能自动真空吸尘器进行清洁操作之前，确保清除地板上的所有松散和易碎物体。(图 16)

使用吸尘器

开始和停止

1 按开/关按钮。

注意：确保智能自动真空吸尘器不再连接至电源插座，小插头已从智能自动真空吸尘器的插座中拔出。

2 开/关指示灯开始缓慢闪烁，智能自动真空吸尘器开始清洁。(图 17)

3 智能自动真空吸尘器将持续清洁，直至电池电量不足。清洁时，智能自动真空吸尘器将按照 Z 方向图、随机、沿墙和螺旋移动的重复顺序进行清洁。(图 18)

4 电池电量不足时，开/关指示灯将开始快速闪烁，智能自动真空吸尘器会停止工作。(图 19)

5 您可以按开/关按钮中断或停止清洁操作。如果再次按开/关按钮且充电电池仍有足够的电量，则智能自动真空吸尘器将继续进行清洁。

指示灯信号及其含义

智能自动真空吸尘器具有带三个指示灯的显示屏：警告指示灯、开/关指示灯和集尘桶已满指示灯。下表说明了这些指示灯所显示信号的含义。

指示灯信号	含义
开/关指示灯持续亮起。	吸尘器正在清洁。
开/关指示灯快速闪烁。	充电电池的电量不足。
集尘桶已满指示灯闪烁。	集尘桶已满。
警告指示灯闪烁。	清洁时吸尘器被提起。
	吸尘器的缓冲装置被卡住。
	滚轮或侧毛刷被卡住。
	上盖不存在或未盖好。

清洁和保养

倒空并清洁集尘桶

集尘桶已满指示灯闪烁时，倒空并清洁集尘桶。

1 取下上盖。(图 20)

注意：确保电源开关处于“关”位置。

2 上拉集尘桶盖手柄，从集尘桶仓中提出集尘桶。(图 21)

注意：取下或重新插入集尘桶时，小心不要损坏马达风扇的刀片。

3 小心地提起集尘桶的盖子并取出滤网。(图 22)

4 在垃圾箱上晃动集尘桶将其倒空。用布或软毛牙刷清洁集尘桶的滤网和内侧。同时清洁集尘桶底部的吸口。(图 23)

警告：切勿用水或在洗碗机中清洁集尘桶和滤网。

5 将滤网放回集尘桶。然后将盖子放在集尘桶上。(图 24)

6 将集尘桶放回集尘桶仓，盖好智能自动真空吸尘器的上盖。(图 25)

警告： 务必确保集尘桶内已放置好滤网。如果您在集尘桶内未放置滤网的情况下使用吸尘器，马达会受到损坏。

清洁传感器、滚轮和侧毛刷

为保持良好的清洁效果，您必须经常清洁跌落传感器、滚轮和侧毛刷。

- 1 确保电源开关处于“关”位置。
- 2 将吸尘器倒置在平面上。
- 3 使用软毛刷（例如牙刷）清除跌落传感器上的灰尘或绒毛。同时检查是否有灰尘或绒毛堵塞吸口。（图 26）

注意：务必定期清洁跌落传感器。如果跌落传感器变脏，吸尘器可能无法检测到高度差异。

- 4 使用软毛刷（例如牙刷）清除前轮和侧轮上的灰尘和绒毛。（图 27）
- 5 要清洁侧毛刷，请抓住刷毛并将其从轴上取下。（图 28）
- 6 使用柔软的毛刷（例如牙刷）或布清除轴和侧毛刷中的绒毛、头发和线头。（图 29）
- 7 检查智能自动真空吸尘器的侧毛刷和底部是否存在可能会损坏地板的尖锐物体。

更换

您可以在 www.shop.philips.com/service 或飞利浦经销商处订购零部件和附件。也可以联系您所在国家/地区的飞利浦客户服务中心。

更换过滤器

如果滤网很脏或已损坏，请进行更换。您可以通过订购号 CP0108 订购新滤网。有关如何从集尘桶中取出滤网及如何放回滤网的说明，请参阅“清洁和保养”一章中的“倒空并清洁集尘桶”。

更换侧毛刷

一段时间后，请更换侧毛刷，以确保正常的清洁效果。

注意：发现磨损或损坏迹象时务必更换侧毛刷。同时，建议您同时更换两个侧毛刷。您可以通过订购号 CP0107 订购一组备用侧毛刷。

- 1 确保开关钮处于“关”位置。
- 2 要更换侧毛刷，请抓住旧侧毛刷的刷毛将其从轴上取下。
- 3 将新侧毛刷推到轴上。（图 10）

更换充电电池

当充电电池无法再充电或耗电很快时，请更换充电电池。您可以订购新充电电池，FC8710 的订购号为 CP0111；FC8700 的订购号为 CP0110。

- 1 让智能自动真空吸尘器运转，直至充电电池电量完全耗尽，以确保在您取出并弃置充电电池前，其已完全放电。
- 2 拧下电池仓盖的螺钉。（图 30）
- 3 卸下电池仓盖。（图 31）
- 4 将新充电电池放入电池仓，装回电池仓盖，拧紧螺钉。（图 32）

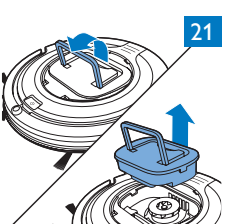
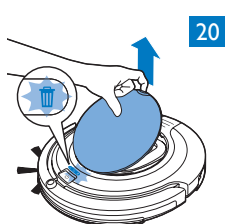
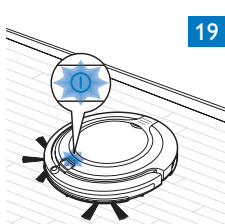
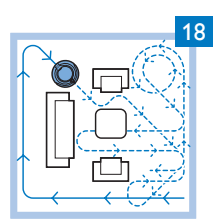
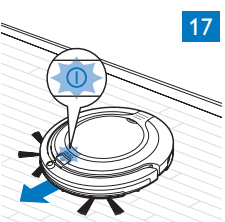
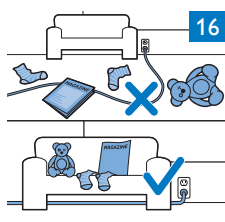
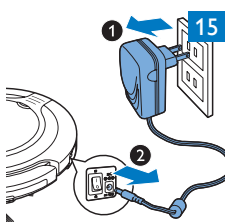
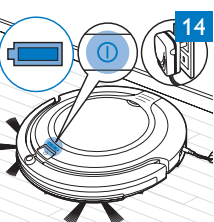
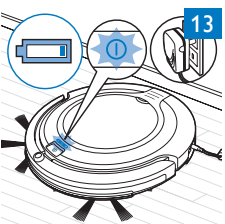
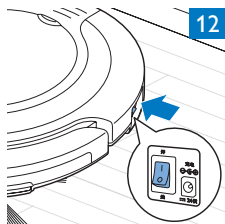
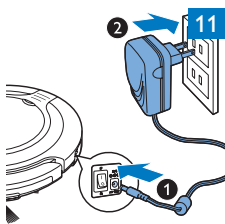
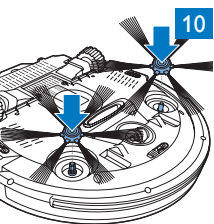
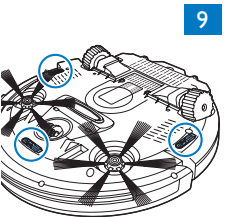
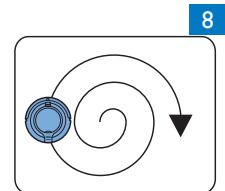
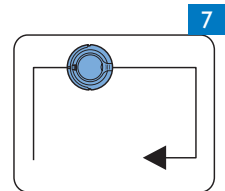
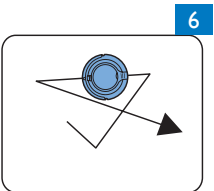
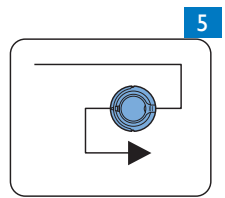
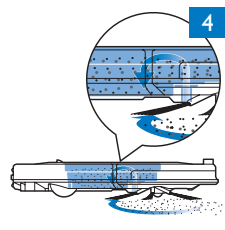
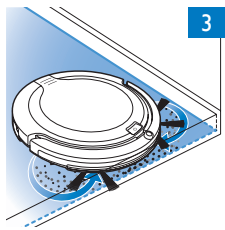
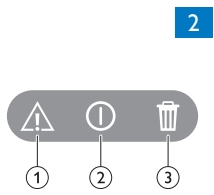
注意：确保电池印刷面朝上，触点方向正确。

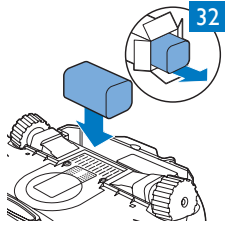
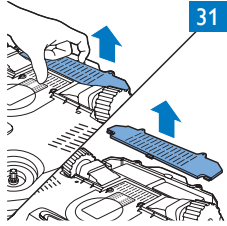
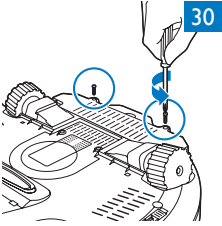
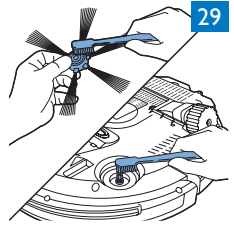
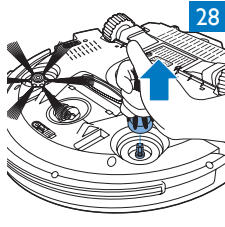
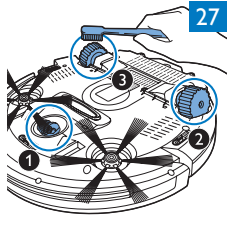
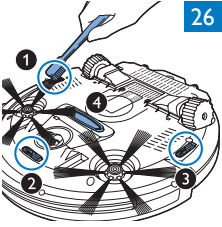
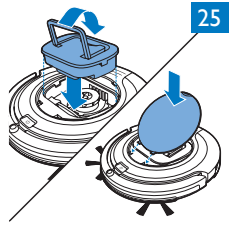
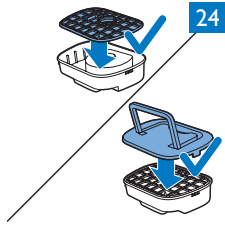
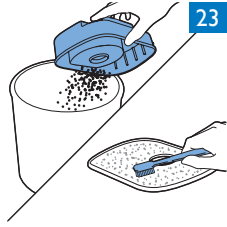
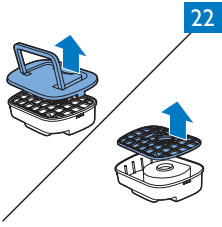
- 5 装回电池仓盖，并用螺钉固定。

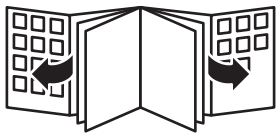
故障种类和处理方法

本章归纳了使用本产品时最常见的一些问题。如果您无法根据以下信息解决问题，请访问 www.philips.com/support 查阅常见问题列表，或联系您所在国家/地区的客户服务中心。

问题	原因	解决方法
按开/关按钮时智能自动真空吸尘器无法开始清洁。	充电电池的电量已耗尽。	为充电电池充电（请参阅“使用准备”一章）。
	小插头仍插在吸尘器上的转换插座中。	吸尘器接通电源不工作。它只能通过充电电池工作。因此，使用前请务必将适配器从吸尘器和电源上断开。
警告指示灯快速闪烁。	一个或多个滚轮被卡住。	将电源开关设为“关”。清除滚轮悬架周围吸附的绒毛、毛发、线头或线丝。
	一个或两个侧毛刷被卡住。	清洁侧毛刷（请参阅“清洁和保养”一章）。
	上盖不存在或未盖好。	上盖不存在或未盖好时，智能自动真空吸尘器无法工作。盖好上盖。
	缓冲装置被卡住。	按开/关按钮。提起智能自动真空吸尘器以释放其缓冲装置。将智能自动真空吸尘器远离障碍物，按开/关按钮使其继续清洁。
	清洁时吸尘器被提起。	按开/关按钮。将智能自动真空吸尘器放在地上。然后按开/关按钮使其继续清洁。
吸尘器无法正确清洁。	一个或两个侧毛刷的刷毛已变形或弯曲。	将毛刷在温水中浸泡一会儿，如果这样做不能使刷毛复原，则请更换侧毛刷（请参阅“更换”一章）。
	集尘桶中的滤网变脏。	用布或软毛牙刷清洁集尘桶中的滤网。
		如果刷洗无助于清洁滤网，请用新滤网更换。我们建议您每年更换一次滤网。
	集尘桶底部吸口被堵塞。	清洁吸口（请参阅“清洁和保养”一章）。
	前轮被毛发或其他污垢卡住。	清洁前轮（见“清洁和保养”一章）。
	吸尘器在清洁深色或黑色地板时会触发跌落传感器。这将导致吸尘器沿异常的方向图移动。	按开/关按钮，然后将吸尘器移到较浅色地板。如果移到较浅色地板后问题仍然存在，请转到 www.philips.com/support 或联系您所在国家/地区的客户服务中心。
	吸尘器在清洁地板时，后者强烈地反射太阳光，这可能会触发跌落传感器，导致吸尘器沿异常的方向图移动。	关闭窗帘，阻止太阳光射入房间。
充电电池无法充电或耗电极快。	充电电池达到了其寿命的终点。	更换充电电池（请参阅“更换”一章）。









www.philips.com



100% recycled paper
100% 循环再造纸

4222.003.4153.1