

Register your product and get support at  
请登录以下网址并得到相应的帮助

[www.philips.com/welcome](http://www.philips.com/welcome)

# FreeMotion 无线灵熨系列

GC800 series



User manual

用户手册

**PHILIPS**



3

---



4

---



4

---



5

---



7

---



7

---



7

---



8

---



9

---



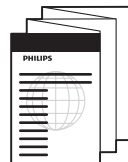
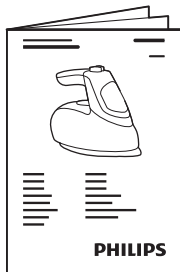
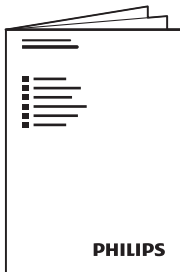
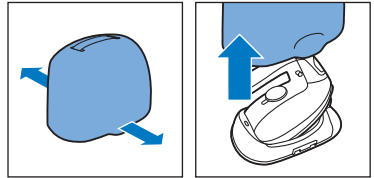
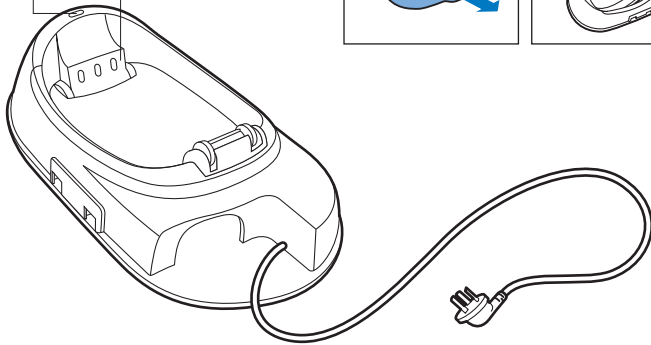
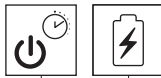
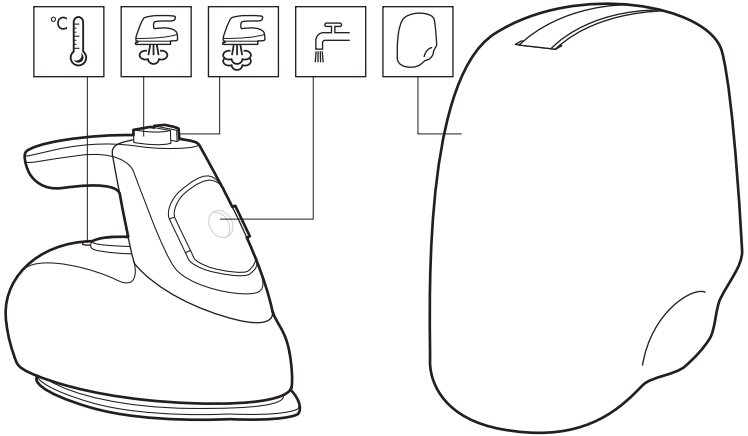
10

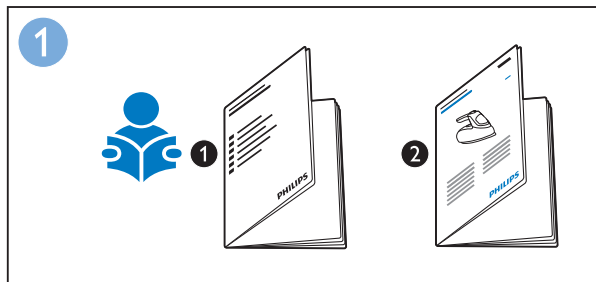
---



10

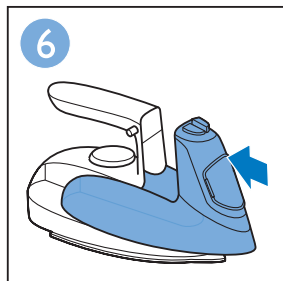
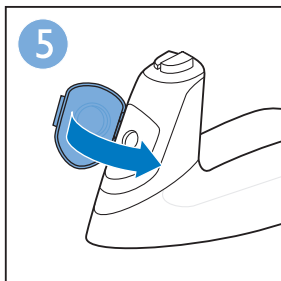
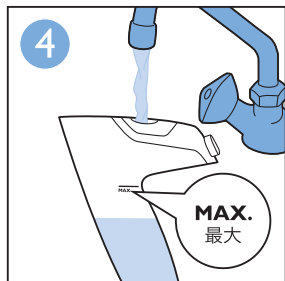
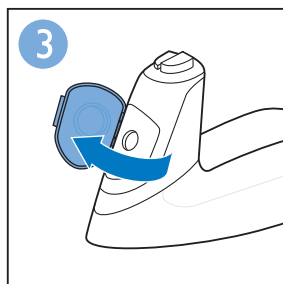
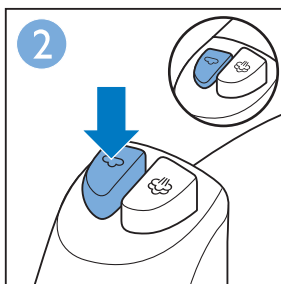
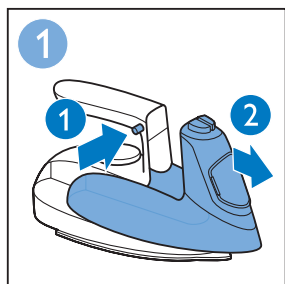
---





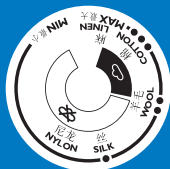
EN Note: Fill the water tank with tap water only. Do not put perfume, vinegar, starch, descaling agents, ironing aids or other chemicals in the water tank.

ZH 注意：仅为水箱注入自来水。请勿将香水、醋、淀粉、除垢剂、熨烫助剂或其他化学药品加入水箱中。





EN Fabric  
CN 织物类型



EN Linen  
CN 麻

**MAX**  
最大  
**LINEN**



EN Cotton  
CN 棉

●●●  
**COTTON**



EN Wool  
CN 羊毛

●●  
**WOOL**



EN Silk  
CN 丝绸

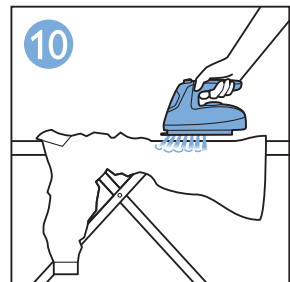
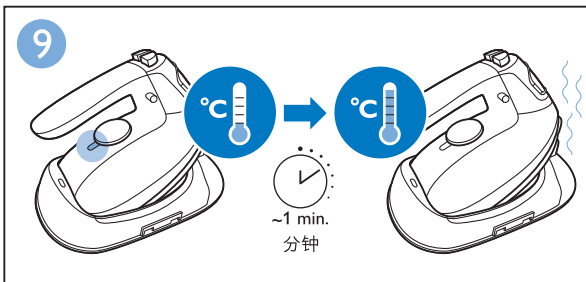
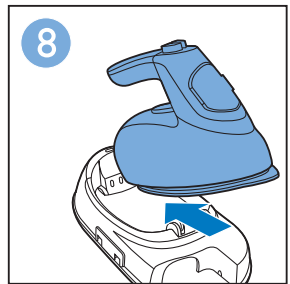
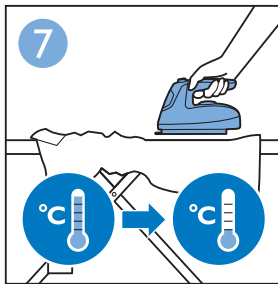
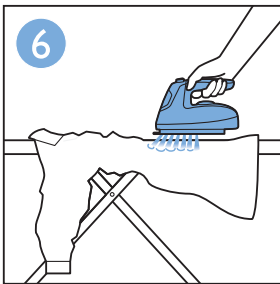
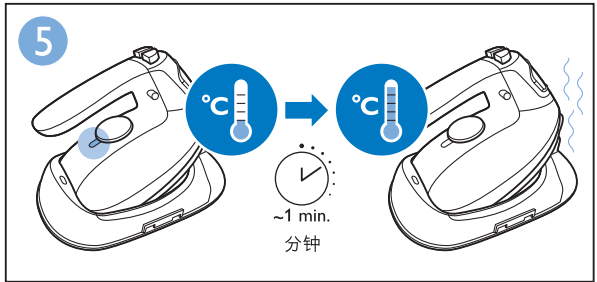
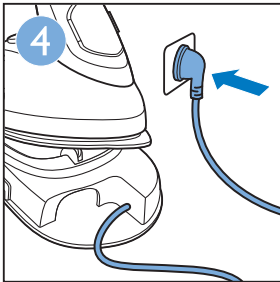
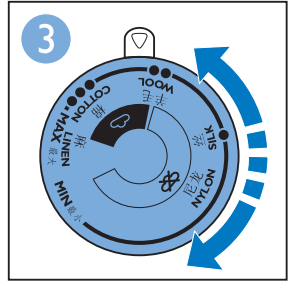
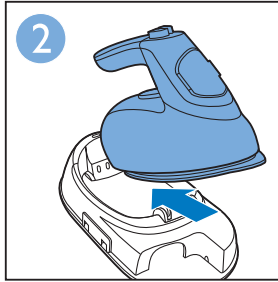
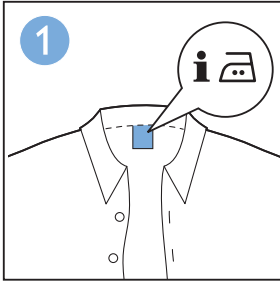
●  
**SILK**

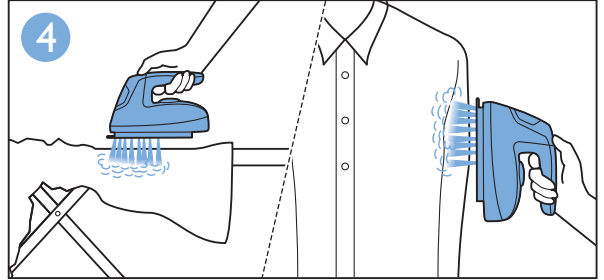
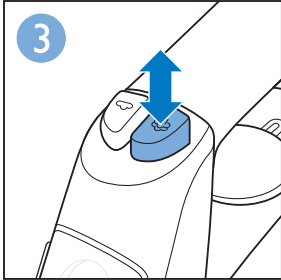
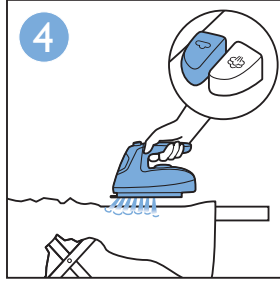
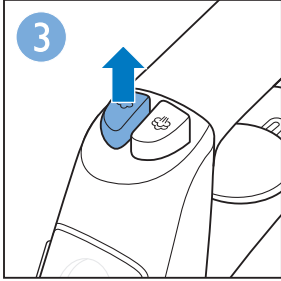
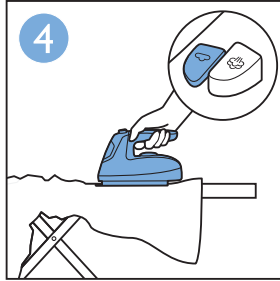
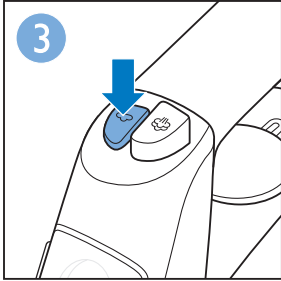
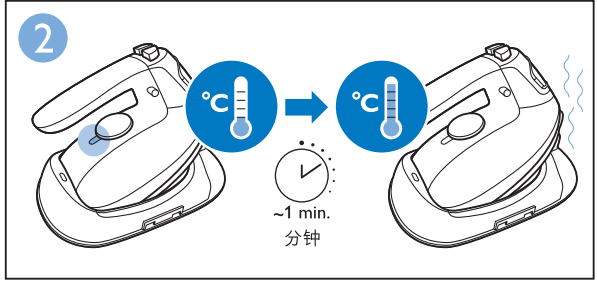
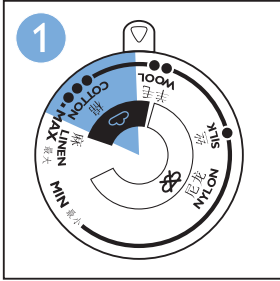


EN Synthetics  
CN 化纤

●  
**SYNTHETICS**



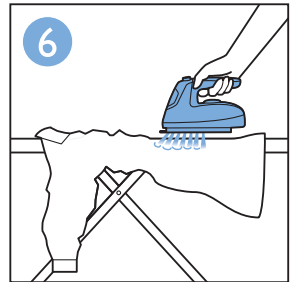
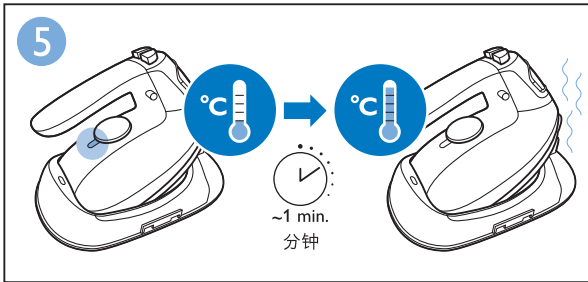
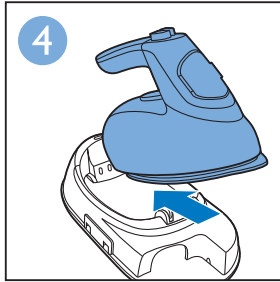
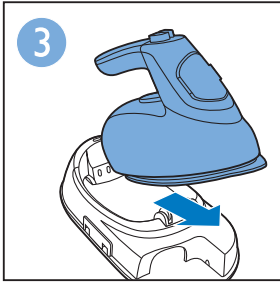
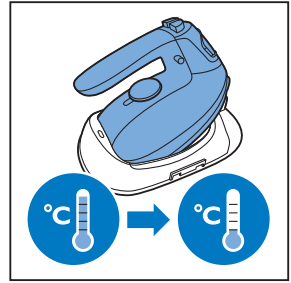
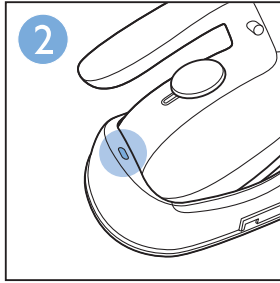




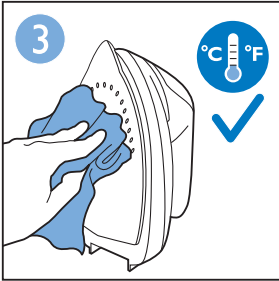
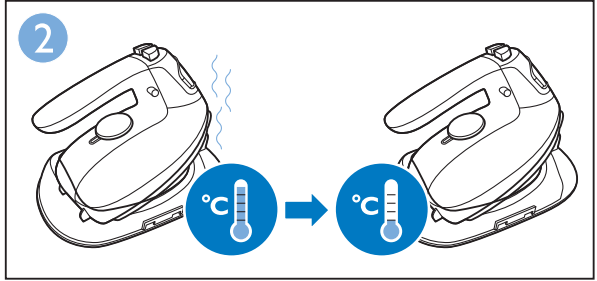
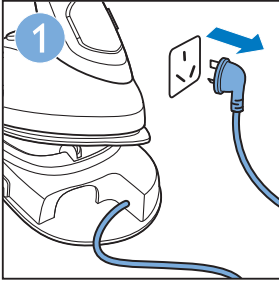


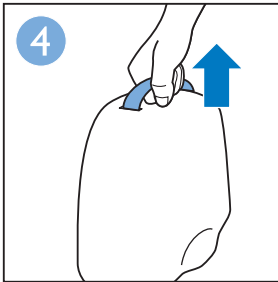
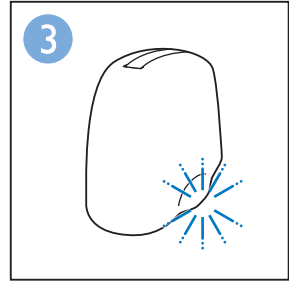
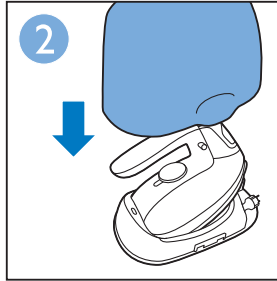
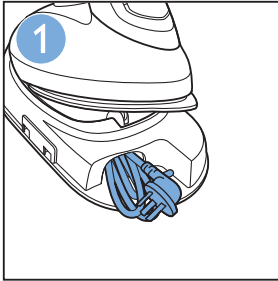
EN Note: The iron switches off automatically when it has not been used for 8 minutes.


ZH 注意：如果 8 分钟没有使用，熨斗将自动关闭。










	Problem	Possible cause	Solution
EN	<p>The iron does not produce steam.</p> <p>The iron is not hot enough.</p> <p>The iron leaks.</p>	<p>The cordless iron cools down after a while when you iron. It needs to reheat on the iron stand regularly.</p>	<p>Put the iron back onto the iron stand until the temperature-ready light switches off to indicate that the iron is ready for use again.</p>
	<p>The iron does not produce steam.</p>	<p>The steam button is pressed down, which means it is set to 'no steam' position.</p>	<p>Press the steam button to put it in up position. This is the steam position.</p>
		<p>The water tank is empty.</p>	<p>Fill the water tank (see )</p>
	<p>The iron leaks.</p>	<p>The water tank is overfilled.</p>	<p>Do not fill the water tank beyond the 'MAX' indication.</p>
	<p>Water leaks out of the water tank when I fill it with water.</p>	<p>The steam button is in up position (steam position) when you remove the water tank from the iron.</p>	<p>Press the steam button to put it in down position ('no steam' position).</p>
	<p>The steam boost button does not work properly.</p>	<p>You have used the steam boost function too often within a very short period.</p>	<p>Put the iron back onto the iron stand until the temperature-ready light switches off to indicate that the iron is ready for use again. We advise you to set the temperature dial to ●●● or MAX for the steam boost function.</p>

Problem	Possible cause	Solution
Flakes and impurities come out of the soleplate during ironing.	Hard tap water causes flakes to develop inside the soleplate.	Use the steam boost function repeatedly to remove flakes and scale from the soleplate. We advise you to use demineralised water if the tap water in your area is too hard.

The red light on the iron stand flashes.	The automatic shut-off function has switched off the iron.	To switch on the iron: Either remove the iron from the iron stand and put it back again, or unplug the iron stand from the mains and then plug it in again. The red auto-off light goes out and the automatic shut-off is deactivated.
--	--	--

问题	可能的原因	解决方法
----	-------	------

ZH 熨斗没有产生蒸汽。 熨斗温度不够高。 熨斗漏水。	熨烫一段时间后，无绳熨斗将会冷却。熨斗需要定期放在熨斗座上再加热。	将熨斗放回熨斗座上，直至温度就绪指示灯关闭，表示熨斗可以再次使用。
-----------------------------------	-----------------------------------	-----------------------------------

熨斗没有产生蒸汽。	按下了蒸汽按钮，这意味着按钮设为了“无蒸汽”位置。 水箱为空。	按下蒸汽按钮，使其处于向上位置。这是蒸汽位置。 向水箱注水（请参阅  ）。
-----------	------------------------------------	---

熨斗漏水。	水箱中的水已过量。	切勿让水位超过“MAX（最大）”水位标示。
-------	-----------	-----------------------

向水箱注水时，水从水箱中漏出。	从熨斗取下水箱时，蒸汽按钮处于向上位置（蒸汽位置）。	按下蒸汽按钮，使其处于向下位置（“无蒸汽”位置）。
-----------------	----------------------------	---------------------------

蒸汽喷射按钮无法正常工作。	您在很短的时间内过于频繁地使用了蒸汽喷射功能。	将熨斗放回熨斗座上，直至温度就绪指示灯关闭，表示熨斗可以再次使用。我们建议您将温度旋钮设置为 ●●● 或 MAX（最大）来使用蒸汽喷射功能。
---------------	-------------------------	--

在熨烫过程中底板内冒出水垢和杂质。	硬水质自来水会导致底板内生产薄层。	反复使用蒸汽喷射功能除去底板上的薄片和水垢。如果您所在地区的自来水太硬，我们建议您使用软化水。
-------------------	-------------------	---

熨斗座上的红色指示灯闪烁。	自动关熄功能已关闭熨斗电源。	要启动熨斗：从熨斗座取下熨斗并将其放回，或拔掉熨斗座的电源插头并再次插入。红色自动关熄指示灯熄灭并且自动关熄被禁用。
---------------	----------------	--

## PHILIPS

产品 : 飞利浦无绳蒸汽电熨斗  
型号 : GC820, GC830  
额定电压 : 220V ~  
额定频率 : 50Hz  
额定输入功率: 1300 W  
生产日期 : 请见产品底部  
产地 : 中国

珠海经济特区飞利浦家用电器有限公司  
中国珠海市三灶镇琴石工业区  
邮政编码: 519040  
全国顾客服务热线: 4008 800 008

本产品根据国标 GB4706.1-2005, GB4706.2-2007, GB4343.1-2009及GB17625.1-2003制造

## PHILIPS

产品 : 飞利浦无绳蒸汽电熨斗  
型号 : GC840, GC850  
额定电压 : 220V ~  
额定频率 : 50Hz  
额定输入功率: 1400 W  
生产日期 : 请见产品底部  
产地 : 中国

珠海经济特区飞利浦家用电器有限公司  
中国珠海市三灶镇琴石工业区  
邮政编码: 519040  
全国顾客服务热线: 4008 800 008

本产品根据国标 GB4706.1-2005, GB4706.2-2007, GB4343.1-2009及GB17625.1-2003制造



Specifications are subject to change without notice.  
©2011 Koninklijke Philips Electronics N.V.  
All rights reserved.

Document order number: 4239.000.8012.1

[www.philips.com](http://www.philips.com)



100% recycled paper  
100% 循环再造纸