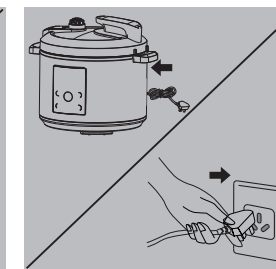
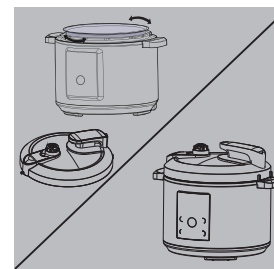
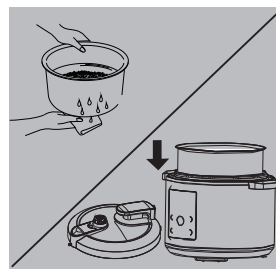
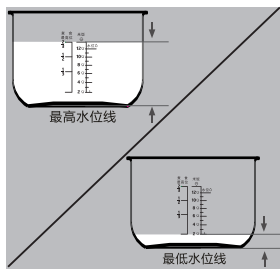


快速指导手册

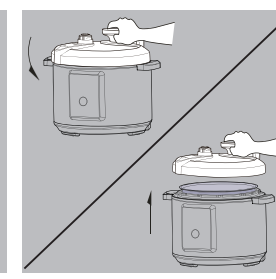
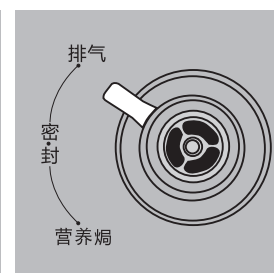
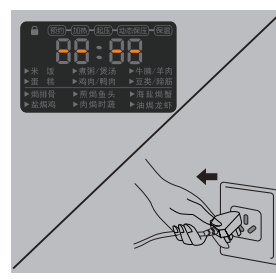
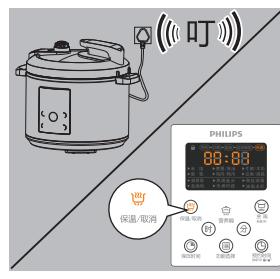
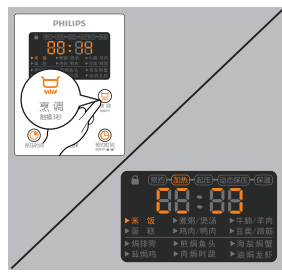
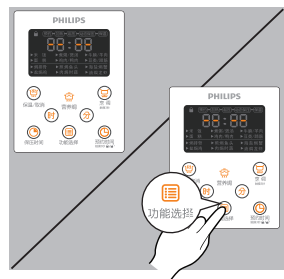
在您使用本产品之前，请先阅读用户手册

HD2176

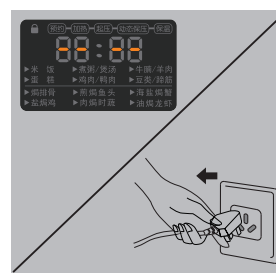
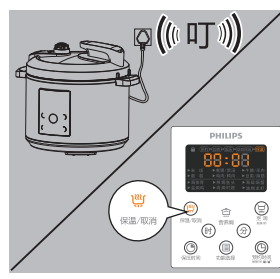
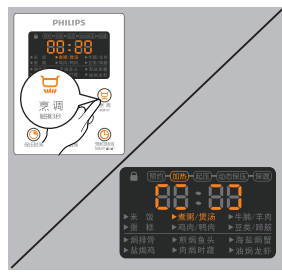
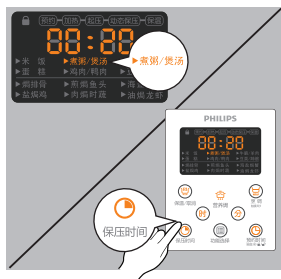
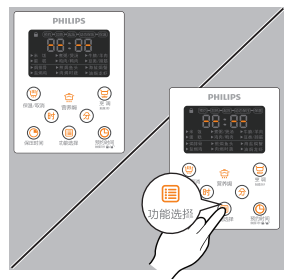
煮饭前准备 ▶



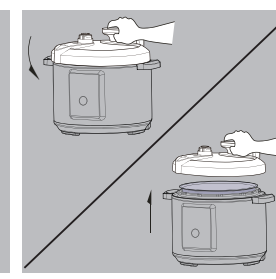
煮饭 ▶



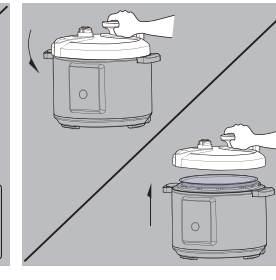
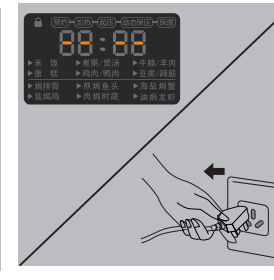
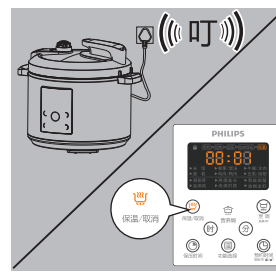
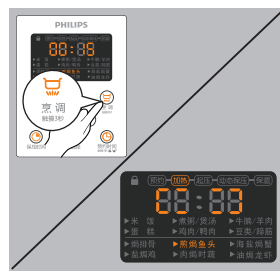
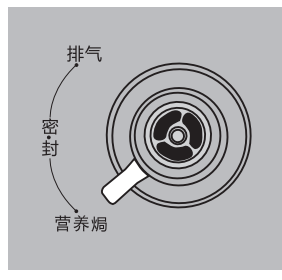
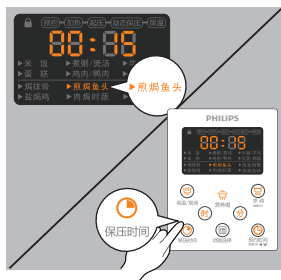
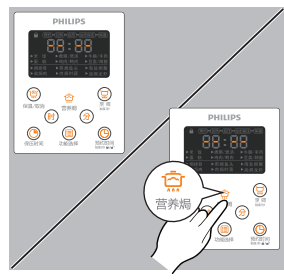
煮粥/煲汤 ▶



自然冷却至浮子阀落下方能开盖



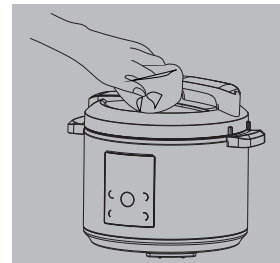
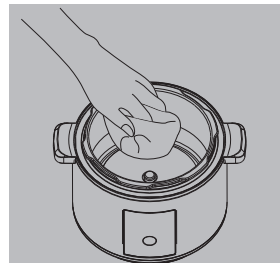
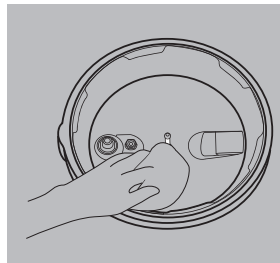
煎焗鱼头 ▶



快速指导手册

HD2176 在您使用产品之前，请先阅读用户手册

清洁电压力煲 ▶



清洗限压阀 ▶

