

PHILIPS

Curler

SalonCurl Essential

16 mm

HP4657/60



Simply shiny curl

SalonCurl Essential curling iron

The essential curling iron for tight curls and ringlets

Beautifully styled hair

- 16 mm barrel for tight curls and ringlets
- 180°C temperature for beautiful results

Gentle on your hair

- Protective ceramic coating

Ease of use

- Ready for use indicator
- Fast heat up time, ready to use in 60 seconds
- On/off indication light
- Cool tip for easier and safer use
- Swivel cord to prevent tangled wires
- 1.8 m power cord
- Universal voltage

Highlights

16 mm barrel



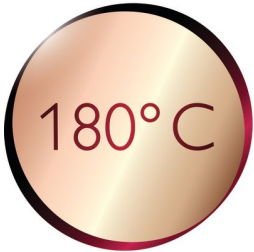
With the barrel diameter of 16 mm you can create curls and ringlets for a joyful and young look.

Gentle on your hair



Protective ceramic coating ensures even heat distribution and less hair damage for shiny and soft hair.

180°C temperature



This high temperature enables you change the shape of your hair, and gives you that perfect look like you've just come from the salon.

Instant heat up

The curler has a fast heat up time, being ready to use in 60 seconds.

On/off indication light

On/off indication light

Cool tip



The tip of the styler is made from a special heat insulating material to keep it cool; you can safely hold it while you're styling for optimal ease of use.

Swivel cord

Useful swivel cord technology rotates the cord to prevent tangled wires.

1.8 m cord

1.8 m power cord

Specifications

Technical specifications

Maximum temperature: 180 °C

Temperature range: one setting

Heating time: 120s

Color/finishing: white and lime green

Cord length: 1.8 m

Barrel diameter: 16 mm

Heater type: PTC ceramic heater

Voltage: worldwide

Features

Ceramic coating

Ready for use indicator

Cool tip

Swivel cord

Hanging loop

Hair type

End result: Tight curls and ringlets

Hair length: Medium, Long

Hair thickness: Thick, Thin, Medium

Service

2-year worldwide guarantee

