

PHILIPS

Bikini*perfect*



HP6376

Rechargeable
Cordless

Register your product and get support at
www.philips.com/welcome

IMPORTANT SAFETY INSTRUCTIONS

When using an electrical appliance, basic safety precautions should always be followed, including the following:

Read all instructions before using this appliance.

DANGER

To reduce the risk of electric shock:

1. Do not reach for a corded trimmer that has fallen into water. Unplug immediately.
2. Adapter is not for immersion or for use in shower.
3. Do not use an extension cord with this appliance.
4. Do not place or store a trimmer where it can fall or be pulled into a tub or sink. Do not place in or drop a trimmer into water or other liquid while plugged in.
5. Always unplug this trimmer from the electrical outlet immediately after charging, except when trimmer is (re)charging.
6. Unplug and remove power supply cord from trimmer before cleaning.

WARNING

To reduce the risk of burns, fire, electric shock or injury to persons:

1. Close supervision is necessary when this appliance is used by, on, or near children or invalids.
2. Use this trimmer for its intended household use as described in this manual. Do not use attachments not recommended by Philips Electronics North America Corporation.
3. Never operate this trimmer if it has a damaged cord or plug, if it is not working properly, if it has been dropped, damaged, or dropped into water. For assistance, call 1-800-243-7884.
4. Keep the trimmer, cord and any attachments away from heated surfaces.
5. Never drop or insert any object into any opening.
6. Do not operate, charge or plug in trimmer outdoors or where aerosol (spray) products are being used or where oxygen is being administered.
7. Always check foil, cutters, cutting unit and attachments before using the trimmer. Do not use the trimmer if foil, cutters, cutting unit or attachments are damaged, as injury may occur.
8. Always attach plug to trimmer first, then to outlet. To disconnect, turn on/off switch to "Off" position, then remove plug from outlet.
9. To prevent possible damage to the cord, do not wrap cord around the trimmer.
10. Never put trimmer in direct sunlight or store at a temperature above 140°F.
11. Trimmer is water-safe and can be rinsed under running tap water or used in the shower or bath. Do not submerge trimmer in water.
12. This trimmer is for use on human hair only. Do not use this trimmer for any other purpose.
13. Always store your trimmer, attachments and power plug in a moisture-free area. Make sure the cord is disconnected from the trimmer.

SAVE THESE INSTRUCTIONS

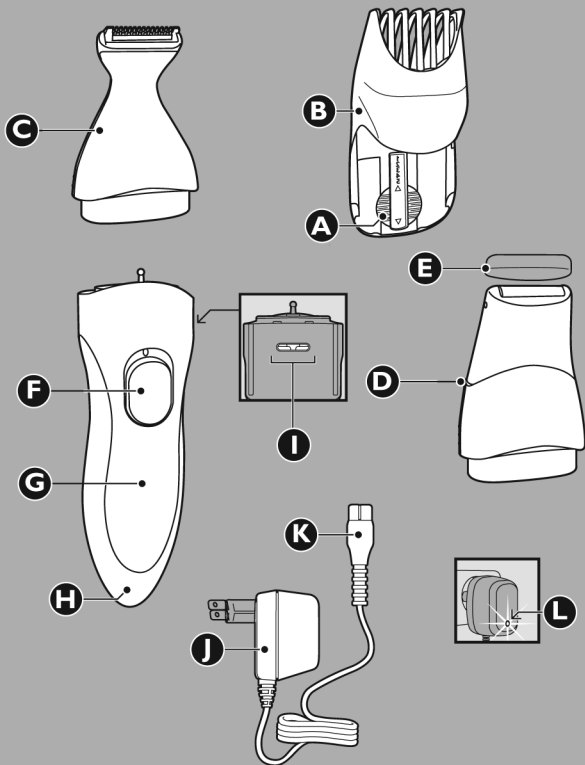
IMPORTANT: The power plug contains a transformer. Do not cut off the power plug to replace it with another plug as this will cause a hazardous condition.

Registration

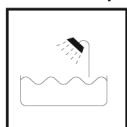
Congratulations on your purchase and welcome to Philips!

To fully benefit from the support that Philips offers, register your product at www.philips.com/welcome

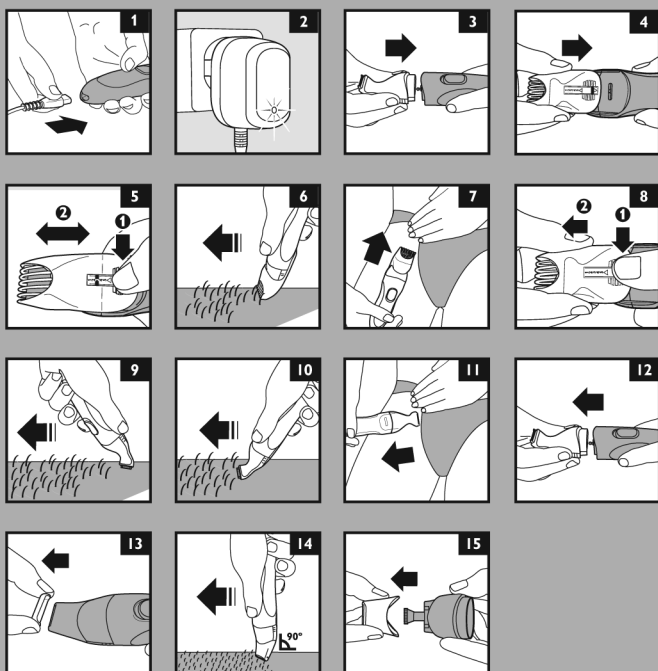
Features



- A Hair length selector
 - B Precision comb
 - C Precision trimmer
 - D Micro shaver
 - E Micro shaver protective cap
 - F On/off switch
 - G Handle
 - H Socket for appliance plug
 - I Setting indicator
 - J Adapter
 - K Appliance plug
 - L Charging light
- Cleaning brush
 Full Two-Year Warranty
 45-Day Money-Back Guarantee



This symbol indicates that the trimmer can be used in the bath or shower.



Put It To The Test

Like many new products, your Philips Bikini trimmer may take a little getting used to. If you are using an electric trimmer for the first time, or if you've been using a different brand, take the time to acquaint yourself with your new Bikini trimmer.

Your Bikini trimmer features styling attachments for maximum precision and visibility to make trimming the bikini line goof proof. We guarantee precise, professional results or Philips will refund you the full purchase price as long as the request is received within 45 days of purchase.

To Charge/Recharge

- ▶ Fully charge trimmer before using for the first time or after non-use for a long period of time.
- ▶ Battery performance is best if you recharge only when the battery is (almost) completely empty.
- ▶ Charging or recharging at temperatures below 40°F or higher than 95°F adversely affects lifespan of the battery.
- ▶ Continuously recharging trimmer will reduce lifespan of battery.

1 Be certain trimmer is OFF.

2 Insert the appliance plug directly into the trimmer (fig. 1).

3 Plug charging plug into any 120VAC outlet. Use only the cord provided.

4 The charging light on the adapter will light to indicate the trimmer is charging (fig. 2).

▶ It will take approximately 10 hours to fully charge the trimmer for a cordless trimming time of up to 60 minutes.

NOTE: After the trimmer is fully charged, the charging light will remain lit.

5 Disconnect the cord and unplug the power plug from electrical outlet.

Optimize the working life of the battery

- ▶ After the trimmer has been charged for the first time, do not recharge the trimmer between trimming sessions. Continue using it until the battery is completely empty.
- ▶ Do not charge for more than 24 hours.
- ▶ Do not keep cord permanently plugged in.
- ▶ Discharge/run down the battery completely twice a year by letting the motor run until it stops.
- ▶ If the trimmer hasn't been used for a long period of time, it must be recharged for a full 10 hours.

Cordless Trimming

- 1** Charge according to directions. Unplug trimmer from outlet.
- 2** Slide ON/OFF switch ON to begin trimming.

Trimming

- ▶ Use this trimmer for its intended household use as described in this manual.
- ▶ Make sure that the trimmer is fully charged before you start trimming. This trimmer will not operate while cord is connected to electrical outlet.
- ▶ Make sure hair is clean.

Do not move the trimmer too fast. Make smooth and gentle movements.

Trimming your bikini line with precision comb

Use the precision trimmer with the precision comb to trim bikini line.

- 1 Put the precision trimmer on handle (fig. 3). You will hear a click.
 - 2 Slide the precision comb into the guiding grooves on both sides of the precision trimmer and push until it 'clicks' into place (fig. 4).
 - 3 Press the hair length selector (1) and slide it up or down (2) to the desired hair length setting (fig. 5). The selected setting number will appear on the colored circle on the handle. See Table 1 for settings.
- If you are trimming for the first time, start by using the comb at the maximum trimming length setting (#5). As you become familiar with the settings, adjust hair length selector to desired trimming length. Selector will "click" into position at each setting.

4 Switch the trimmer ON.

5 To trim in the most effective way, move the trimmer against the direction of hair growth (fig. 6). Make sure the surface of the comb always stays in contact with the skin. For easier trimming, stretch the skin with your free hand (fig. 7).

NOTE: Since all hairs do not grow in the same direction, you may want to try different trimming directions (i.e., upwards, downwards, or across). Practice is best for optimum results.

► If a lot of hair has accumulated in the comb, remove the comb and blow and/or shake the hair out of the comb. You can also use the cleaning brush provided to remove hair from the comb area.

Table 1. Precision Comb

Setting	Remaining hair length (in.)/(mm)
1	.08 in/2mm
2	.16 in/4mm
3	.24 in/6mm
4	.31 in/8mm
5	.39 in/10mm

- **REMEMBER:** You must reset the hair length selector back to your desired setting every time you replace the comb on the appliance.
- The remaining hair length corresponds with the smallest distance between the cutting blade and the spot where the comb is in contact with the skin.

Styling your bikini line without precision comb

Use the precision trimmer without the precision comb to style your bikini line.

- The precision trimmer trims hair to a length of approximately .24in/0.6mm.
- Be creative when styling your bikini line. You can draw and cut out a template, such as a heart shape, to create your own personal style.

1 Be certain trimmer is in the OFF position.

2 Remove the precision comb by pressing the hair length selector (1) and sliding the comb upwards (2) (fig. 8).

3 Make sure precision trimmer is on trimmer.

4 Switch trimmer ON.

5 The trimmer can be used with the precision trimmer teeth pointing toward the skin (fig. 9) or with the flat part of the precision trimmer pointing toward the skin (fig. 10).

6 For best results, move the appliance against the direction of hair growth making sure the precision trimmer is in full contact with the skin (fig. 11).

Be careful when using the precision trimmer without the comb as it removes every hair it touches.

7 Make well-controlled movements. Touch the hair/skin lightly with the precision trimmer.

NOTE: To achieve optimal trimming results, it is recommended to use the appliance on dry skin.

Shaving With Micro Shaver

Use the micro shaver to shave along contoured edges to remove any stubble while creating a smooth, well-defined bikini line.

- ▶ Before using the micro shaver, always check it for wear and damage. If the micro shaver shows signs of wear or damage, do not use it as injury may occur. Do not use the micro shaver attachment until it has been replaced.
- 1** Pre-trim the contours desired with the precision trimmer without a comb.
- 2** Remove the precision trimmer from handle (fig. 12).
- 3** Put the micro shaver on the handle.
- 4** Remove the protective cap (fig. 13).
- 5** Switch the trimmer ON.
- 6** Gently press the micro shaver onto the skin and shave against the direction of hair growth along contoured edges to remove any stubble (fig. 14). Do not press too hard.

Cleaning

- ▶ The trimmer should be cleaned after each use.
- ▶ Always switch trimmer OFF, unplug and remove power supply cord from trimmer before cleaning.
- ▶ Do not use abrasive cleaning agents, scourers or liquids such as alcohol, benzene, bleach or acetone to clean the trimmer and attachments.
- ▶ Never clean, replace or remove attachments with motor ON.
- ▶ Do not apply pressure to cutters.
- ▶ Do not touch cutters with hard objects as this may damage them.

During Use:

- ▶ If cut hairs have accumulated in the attachments, remove hairs by shaking, blowing or using cleaning brush provided. Remember to adjust the hair length selector back to your selected setting when you replace the precision comb on the trimmer.

After Each Use:

- 1** Make sure the trimmer is switched OFF and disconnected from the electrical outlet.
- 2** Remove any attachment from trimmer.
- 3** Blow and/or shake out any hair that may have accumulated in the attachment.
- 4** To clean the micro shaver, pull the foil in the direction of the arrow to remove from base of micro shaver (fig. 15).
- 5** Clean the cutter and the inside of the shaving foil carefully with the brush or under warm tap water.

Do not use a towel to dry the micro shaver as damage to the shaving foil could occur.

- ▶ The shaving foil is very delicate. Handle carefully.
- ▶ If foil becomes damaged, do not continue using the appliance.
- ▶ Do not clean the foil with the brush, as this may cause damage.
- 6** Rinse attachments thoroughly under warm tap water.
- 7** Shake excess water from attachment and allow to dry thoroughly.
- 8** Place the attachment back on the handle.

This trimmer has no other user-serviceable parts. For assistance, call 1-800-243-7884.

Storage

- ▶ Be sure trimmer is turned OFF. Remove cord from outlet and trimmer before storing in a safe, dry location where it will not be crushed, banged, or subject to damage.
- ▶ Do not wrap cord around trimmer when storing.
- ▶ Store cord in a safe location where it will not be cut or damaged.
- ▶ Do not place or store trimmer where it can fall or be pulled into a tub or sink, water or other liquid while plugged in.

Assistance

For assistance, call toll free:

1-800-243-7884
or visit our website:
www.philips.com/support

Information is available 24 hours a day, 7 days a week.

Full Two-Year Warranty

Philips Electronics North America Corporation warrants each new Philips product, Model HP6376 against defects in materials or workmanship for a period of two years (cutters for up to four years) from the date of purchase, and agrees to repair or replace any defective product without charge.

IMPORTANT: This warranty does not cover damage resulting from accident, misuse or abuse, lack of reasonable care, the affixing of any attachment not provided with the product or loss of parts or subjecting the product to any but the specific voltage.* Use of unauthorized replacement parts will void this warranty.

PHILIPS ELECTRONICS NORTH AMERICA CORPORATION WILL NOT PAY FOR WARRANTY SERVICE PERFORMED BY A NON-AUTHORIZED REPAIR SERVICE AND WILL NOT REIMBURSE THE CONSUMER FOR DAMAGE RESULTING FROM WARRANTY SERVICE PERFORMED BY A NON-AUTHORIZED REPAIR SERVICE. NO RESPONSIBILITY IS ASSUMED FOR ANY SPECIAL, INCIDENTAL OR CONSEQUENTIAL DAMAGES.

In order to obtain warranty service, simply go to www.philips.com or call 1-800-243-7884 for assistance. It is suggested that for your protection you return shipments of product by insured mail, insurance prepaid. Damage occurring during shipment is not covered by this warranty. **NOTE:** No other warranty, written or oral, is authorized by Philips Electronics North America Corporation. This warranty gives you specific legal rights, and you may also have other rights which vary from state to state. Some states do not allow the exclusion or limitation of incidental or consequential damages, so the above exclusion and limitations may not apply to you.

*Read enclosed instructions carefully.

Manufactured for:

Philips Consumer Lifestyle

A Division of Philips Electronics North America Corporation

P.O. Box 10313, Stamford, CT 06904



This symbol on the product's nameplate means it is listed by Underwriters' Laboratories, Inc.

PHILIPS is a Registered Trademark of Koninklijke Philips Electronics N.V.

© 2010 Philips Electronics North America Corporation. All Rights Reserved.

PHILIPS

45-DAY MONEY-BACK GUARANTEE

If you are not fully satisfied with your Philips trimmer, send the product back and we'll refund you the full purchase price.

The trimmer must be shipped prepaid by insured mail, insurance prepaid, and have the original sales receipt, indicating purchase price and the date of purchase, enclosed. We cannot be responsible for lost mail. The trimmer must be postmarked no later than 45 days after the date of purchase. Philips reserves the right to verify the purchase price of the product and limit refunds not to exceed suggested retail price.

To obtain money-back guarantee authorization form, call 1-800-243-7884 for assistance. Please allow 4-6 weeks for delivery of check.