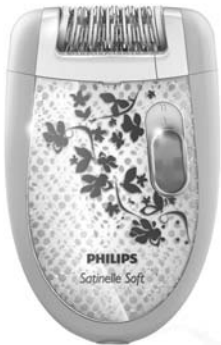


# PHILIPS

*Satinelle Soft*



**HP6512**

**Corded  
Epilator**

Register your product and get support at  
[www.philips.com/welcome](http://www.philips.com/welcome)

# **IMPORTANT SAFETY INSTRUCTIONS**

When using an electrical appliance, basic safety precautions should always be followed, including the following:

**Read all instructions before using this appliance.**

## **DANGER**

**To reduce the risk of electric shock:**

1. Do not reach for an epilator that has fallen into water. Unplug immediately.
2. Do not use epilator while bathing or in a shower.
3. Do not place or store an epilator where it can fall or be pulled into a tub or sink. Do not place in or drop an epilator into water or other liquid.
4. Always unplug this epilator from the electrical outlet immediately after using.
5. Unplug and remove power supply cord from epilator before cleaning.

## **WARNING**

**To reduce the risk of burns, fire, electric shock or injury to persons:**

1. This appliance should never be used by, on, or near children or invalids. Keep out of reach of children.
2. Use this epilator for its intended household use as described in this manual. Do not use attachments not recommended by Philips Electronics North America Corporation.
3. Never operate this epilator if it has a damaged cord or plug, if it is not working properly, if it has been dropped, damaged, or dropped into water. For assistance, call 1-800-243-7884.
4. Keep the epilator, cord, plug and any attachments away from heated surfaces.
5. Never drop or insert any object into any opening.
6. Do not operate or plug in epilator outdoors or where aerosol (spray) products are being used or where oxygen is being administered.
7. Always check rotating discs, hair lift and massage element before using the epilator. Do not use the epilator if rotating discs, hair lift and massage element are damaged, as injury may occur.
8. Always attach plug to epilator first, then to outlet. To disconnect, turn on/off switch to "Off" position, then remove plug from outlet.
9. To prevent possible damage to the cord, do not wrap cord around the epilator. Do not use an extension cord.
10. Never put epilator in direct sunlight or store at a temperature above 140°F.
11. An appliance should never be left unattended while plugged in.
12. This epilator is for use on human hair on areas below the neck: underarms, bikini area and legs only. Do not use this epilator for any other purpose.
13. Always store your epilator and power plug in a moisture-free area. Make sure the cord is disconnected from the epilator.
14. When using the epilating head, keep it away from the hair on your head, eyelashes, eyebrows, clothing, brushes, wires, threads and cords to prevent accidents, injury or damage.
15. Keep the epilating head away from water. Do not use epilator near or over a sink or bathtub filled with water.
16. Only use the power plug supplied with the epilator.

# **SAVE THESE INSTRUCTIONS**

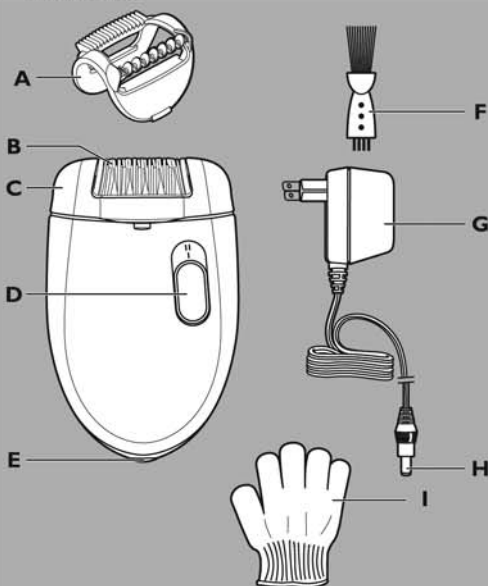
**IMPORTANT:** The power plug contains a transformer. Do not cut off the power plug to replace it with another plug as this will cause a hazardous condition.

## **Registration**

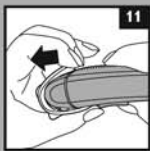
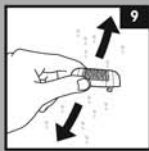
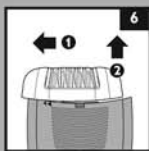
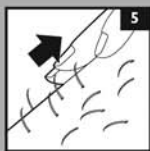
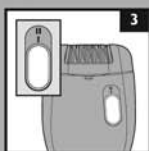
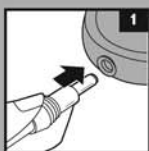
Congratulations on your purchase and welcome to Philips!

To fully benefit from the support that Philips offers, register your product at [www.philips.com/welcome](http://www.philips.com/welcome)

# Features



- A Hair lift and massage element
  - B Epilating discs
  - C Epilating head
  - D On/Off slide switch and speed selector
    - O = OFF
    - I = Normal speed: for thinner hair or bony areas
    - II = High speed: for thicker hair or larger areas
  - E Socket for appliance plug
  - F Brush
  - G Adaptor
  - H Appliance Plug
  - I Exfoliation Glove
- Storage Pouch  
Full Two-Year Warranty  
45-Day Money-Back Guarantee



## **IMPORTANT**

The following information and precautions are important when epilating:

- ▶ **CAUTION:** Methods of removing hair by the root can cause in-grown hairs and minor skin injuries. Please consult your doctor if you have any questions about the use of an epilator.
- ▶ Do not use the epilator if you suffer from varicose veins, rashes, spots or blemishes, or when the skin is irritated or if you have in-grown hairs or a tendency to produce in-grown hairs. Consult your doctor first.
- ▶ **Any minor injury resulting from hair removal may allow bacteria to penetrate the injury site potentially causing small scars or a change in pigmentation of the skin. The risk of infection may be minimized by thoroughly cleaning the rotating discs before and/or after each use. (See Cleaning section).**
- ▶ The epilator should only be used after prior consultation with your doctor if you have or experience:
  - Open wounds
  - Eczema, psoriasis (scaly eczema), inflamed skin reactions such as folliculitis, skin rashes or the tendency to allergy or allergic skin reactions
  - Immune deficiency or disorders
  - Couperose, rosacea, or varicose veins
  - Pregnancy
  - Reduced skin immunity as a result of diabetes, pregnancy, Raynaud's disease, etc.
  - Hemophilia
  - If you have moles, raised skin bumps, etc.
- ▶ If you have been or begin taking hormone medication, or recently been pregnant, a change in your hormone levels may influence the thickness, color or amount of hair growth. This is caused by the hormonal changes, not by this method of hair removal.
- ▶ Clean the epilating head after each use following **CLEANING** instructions.

## Put It To The Test

Like many new products, your Epilator may take a little getting used to. If you are using a hair removal system for the first time, or if you've been using a different brand, your skin may need time to adapt to your new Epilator.

Give yourself a little time to practice and determine the best comfort settings and speed to remove hairs quickly, yet comfortably. The rotating discs grip even the shortest hairs (1/64in./0.5mm) and remove them at the root. Any regrowth of hairs tends to be softer - no more stubble! Your legs will remain smooth for weeks.

To acquaint yourself with how the Epilator works, be certain to read the instructions and important information contained in this booklet before using for the first time.

## How To Use Your Epilator

- ▶ Use this epilator for its intended household use as described in this manual.
- ▶ Make sure your skin is clean, free from grease and creams. Do not apply any cream before using. Hairs are easier to remove after a bath or a shower, but your skin should be completely dry before using your Epilator.
- ▶ Use the hair lift and massage element if you are new to epilating. This ensures optimal hair lifting while relaxing the skin.
- ▶ Epilation is easier and more comfortable when the hair has the optimum length of 1/8 - 5/32in/3-4mm.
- ▶ Regular massages with the exfoliation glove at least 2 days before epilating may help prevent in-grown hairs.
- ▶ If you are using the appliance for the first time, it is recommended that you begin at an area with little hair growth to become accustomed to using your Epilator.
- ▶ As the hairs are being removed by the root, your skin may feel a little discomfort after using the Epilator for the first time. This effect will gradually lessen with each use.
- ▶ After epilation, regrowth of hairs tends to be softer both in appearance and in touch.
- ▶ After each use, you may want to apply a nonalcohol based mild cream or body lotion which will help reduce the possibility of skin irritation.

- 1** Before first use, clean the epilating head. See 'Cleaning' section.
- 2** Be certain appliance is in OFF "O" position. Connect cord to appliance, making sure that the plug is completely inserted into the appliance (Fig. 1). Insert the plug into any 120V AC outlet.
- 3** If desired put the hair lift and massage element on the epilating head (Fig. 2).
- 4** Switch the Epilator ON by selecting the desired speed (Fig. 3).

## Epilating

---

- ▶ For the areas where the hairs are thinner, hard-to-reach places and areas with bones close to the skin's surface (such as knees and ankles), select speed I (normal speed).
  - ▶ For larger surfaces and thicker hair areas, select speed II (high speed).
- 5** Hold the Epilator perpendicular to your leg at a 90° degree angle with the ON/OFF Slide Switch pointing in the direction you are going to move the appliance (Fig. 4).
  - 6** Keep the skin taut using your fingers to stretch the skin so the rotating discs can grasp the raised hairs (Fig. 5).
  - 7** Gently press and move the Epilator slowly over the skin against the direction of hair growth. If you press too lightly or too hard, the Epilator will not be able to grasp and remove the hairs. Experiment until you find the right settings and right amount of pressure for your type of skin and hair.
  - 8** To switch the Epilator OFF, slide the ON/OFF Switch to the "O" position.
  - 9** Clean Epilator head after each use.

**NOTE:** If you choose to use a cream or moisturizing lotion after use, be certain it does not contain alcohol as it may cause discomfort.

### **IMPORTANT:**

- ▶ After using the Epilator, some redness or irritation may occur. This is normal and should disappear quickly.
- ▶ **This appliance is only intended for removing hair below the neck: underarms, bikini area and legs. Do not use it for any other purpose.**
- ▶ Clean the appliance after each use following **CLEANING** instructions.

## Cleaning

### IMPORTANT

- ▶ Always switch the Epilator to OFF position “O” and remove plug from electrical outlet and epilator before cleaning.
- ▶ Never immerse this appliance in water.
- ▶ Do not use strong or abrasive cleaners or acetone to clean the housing/body of Epilator.

### Cleaning the Epilator Head

---

- ▶ It is essential for hygienic reasons and optimum performance that the epilating head, attachments and rotating discs are cleaned after each use.
  - ▶ Never clean, remove, or replace epilating head, attachments or rotating discs while motor is ON. The rotating discs are not removable from the appliance.
  - ▶ Do not apply pressure or touch rotating discs with hard objects as this may dent or damage the discs. If damage occurs, discontinue use immediately.
- 1** Remove the epilating head by pushing the head in the direction of the arrows indicated on the back of the epilating head (1). Lift the epilating head off the appliance (2) (Fig. 6).

- 2** Remove loose hairs from the epilating discs with the brush (Fig. 7).

Never try to detach the epilating discs from the appliance.

- 3** Rinse the epilating head thoroughly under warm tap water (Fig. 8).

- 4** Shake off excess water (Fig. 9) and dry epilating head completely with a soft towel. Do not replace the epilator head onto the appliance until it is completely dry.

- 5** Place the epilating head back onto the appliance (1) and push it against the direction of the arrows indicated on the back of the epilating head (2) until it snaps back into position (Fig. 10). You will hear a click.

The epilating head only fits onto the appliance in one way.

This Epilator has no other user-serviceable parts. For assistance, call 1-800-243-7884.

### Cleaning the Hair-lifting Attachment

---

- 1** Remove the hair lift and massage element from the epilating head (Fig. 11).
- 2** Remove loose hairs from the attachment with the brush.
- 3** Rinse the attachment thoroughly under warm tap water.
- 4** Shake off excess water and dry the attachment completely with a soft towel. Do not replace the attachment and the epilator head until these parts are completely dry.

## Storage

- ▶ Be sure Epilator is turned OFF. Remove cord from outlet and Epilator before storing in a safe, dry location where it will not be crushed, banged, or subject to damage.
- ▶ Do not wrap cord around Epilator when storing.
- ▶ Store cord in a safe location where it will not be cut or damaged.
- ▶ Do not place or store Epilator where it can fall or be pulled into a tub or sink, water or other liquid while plugged in.

## Assistance

For assistance, visit our website:

**[www.philips.com/support](http://www.philips.com/support)  
or call toll free 1-800-243-7884**

Information is available 24 hours a day,  
7 days a week.

4203 000 6870 1

## Full Two-Year Warranty

Philips Electronics North America Corporation warrants each new Philips product, Model HP6512 against defects in materials or workmanship for a period of two years from the date of purchase, and agrees to repair or replace any defective product without charge.

**IMPORTANT:** This warranty does not cover damage resulting from accident, misuse or abuse, lack of reasonable care, the affixing of any attachment not provided with the product or loss of parts or subjecting the product to any but the specified voltage.\* Use of unauthorized replacement parts will void this warranty.

**PHILIPS ELECTRONICS NORTH AMERICA CORPORATION WILL NOT PAY FOR WARRANTY SERVICE PERFORMED BY A NON-AUTHORIZED REPAIR SERVICE AND WILL NOT REIMBURSE THE CONSUMER FOR DAMAGE RESULTING FROM WARRANTY SERVICE PERFORMED BY A NON-AUTHORIZED REPAIR SERVICE. NO RESPONSIBILITY IS ASSUMED FOR ANY SPECIAL, INCIDENTAL OR CONSEQUENTIAL DAMAGES.**

In order to obtain warranty service, simply go to [www.philips.com](http://www.philips.com) or call 1-800-243-7884 for assistance. It is suggested that for your protection you return shipments of product by insured mail, insurance prepaid. Damage occurring during shipment is not covered by this warranty. **NOTE:** No other warranty, written or oral, is authorized by Philips Electronics North America Corporation. This warranty gives you specific legal rights, and you may also have other rights which vary from state to state. Some states do not allow the exclusion or limitation of incidental or consequential damages, so the above exclusion and limitations may not apply to you.

\*Read enclosed instructions carefully.

Manufactured for:

Philips Consumer Lifestyle

A Division of Philips Electronics North America Corporation

P.O. Box 10313, Stamford, CT 06904



This symbol on the product's nameplate means it is listed by Underwriters' Laboratories, Inc.

PHILIPS is a Registered Trademark of Koninklijke Philips Electronics N.V.

© 2011 Philips Electronics North America Corporation. All Rights Reserved.

# PHILIPS 45-DAY MONEY-BACK GUARANTEE

If you are not fully satisfied with your Philips epilator, send the product back and we'll refund you the full purchase price.

***The epilator must be shipped prepaid by insured mail, insurance prepaid, and have the original sales receipt, indicating purchase price and the date of purchase, enclosed. We cannot be responsible for lost mail. The epilator must be postmarked no later than 45 days after the date of purchase. Philips reserves the right to verify the purchase price of the product and limit refunds not to exceed suggested retail price.***

To obtain money-back guarantee return authorization form, call 1-800-243-7884 for assistance. Please allow 4-6 weeks for delivery of check.