

PHILIPS

SatinPerfect



HP6576/60

Rechargeable
Cord/Cordless Epilator

Register your product and get support at
www.philips.com/welcome

IMPORTANT SAFETY INSTRUCTIONS

When using an electrical appliance, basic safety precautions should always be followed, including the following:

Read all instructions before using this appliance.

DANGER

To reduce the risk of electric shock:

1. Do not reach for an epilator that has fallen into water. Unplug immediately.
2. Do not use epilator while bathing or in a shower.
3. Do not place or store an epilator where it can fall or be pulled into a tub or sink. Do not place in or drop an epilator into water or other liquid.
4. Always unplug this epilator from the electrical outlet immediately after using.
5. Unplug and remove power supply cord from epilator before cleaning.
6. The batteries used in this device may present a fire or chemical burn hazard if mistreated. Do not disassemble, heat above 100°C (212°F) or incinerate.

WARNING

To reduce the risk of burns, fire, electric shock or injury to persons:

1. This appliance should never be used by, on, or near children or invalids. Keep out of reach of children.
2. Use this epilator for its intended household use as described in this manual. Do not use attachments not recommended by Philips Electronics North America Corporation.
3. Never operate this epilator if it has a damaged cord or plug, if it is not working properly, if it has been dropped, damaged, or dropped into water. For assistance, call 1-800-243-7884.
4. Keep the epilator, cord and plug away from heated surfaces.
5. Never drop or insert any object into any opening.
6. Do not operate or plug in epilator outdoors or where aerosol (spray) products are being used or where oxygen is being administered.
7. Always check rotating discs before using the epilator. Do not use the epilator if rotating discs are damaged or show signs of wear, as injury may occur.
8. Always attach plug to epilator first, then to outlet. To disconnect, turn on/off switch to "Off" position, then remove plug from outlet.
9. To prevent possible damage to the cord, do not wrap cord around the epilator. Do not use an extension cord.
10. Never put epilator in direct sunlight or store at a temperature above 140°F.
11. An appliance should never be left unattended while plugged in.
12. This epilator is for use on human hair on areas below the neck: underarms, bikini area and legs only. Do not use this epilator for any other purpose.
13. Always store your epilator and power plug in a moisture-free area. Make sure the cord is disconnected from the epilator.
14. When using the epilating head, keep it away from the hair on your head, eyelashes, eyebrows, clothing, brushes, wires, threads and cords to prevent accidents, injury or damage.
15. Keep the epilating head away from water. Do not use epilator near or over a sink or bathtub filled with water.
16. Only use the power plug supplied with the epilator.

SAVE THESE INSTRUCTIONS

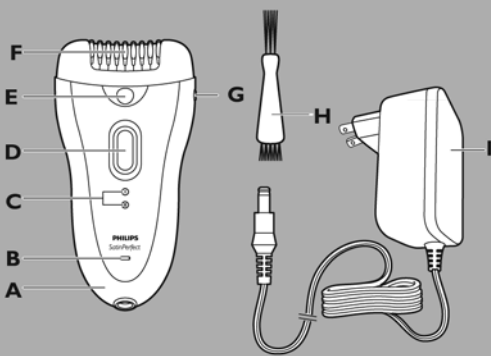
IMPORTANT: The power plug contains a transformer. Do not cut off the power plug to replace it with another plug as this will cause a hazardous condition.

Registration

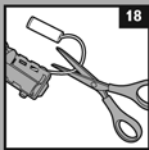
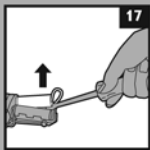
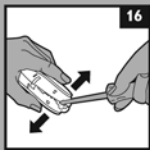
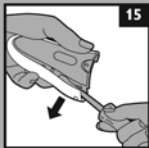
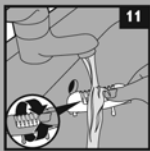
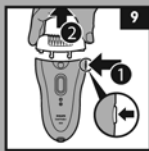
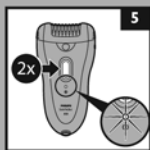
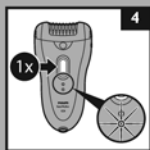
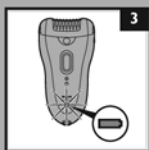
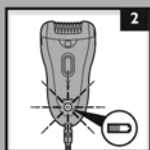
Congratulations on your purchase and welcome to Philips!

To fully benefit from the support that Philips offers, register your product at www.philips.com/welcome

Features



- A Epilator
 - B Charging light
 - C Speed setting indications
 - D On/off button
 - Press once for speed II
 - Press twice for speed I
 - E Opti-light
 - F Epilating discs
 - G Release button
 - H Cleaning brush
 - I Adapter
- Luxury pouch
Full Two-Year Warranty
45-Day Money-Back Guarantee



IMPORTANT

The following information and precautions are important when epilating:

- ▶ **CAUTION:** Methods of removing hair by the root can cause in-grown hairs and minor skin injuries. Please consult your doctor if you have any questions about the use of an epilator.
- ▶ Do not use the epilator if you suffer from varicose veins, rashes, spots or blemishes, or when the skin is irritated or if you have in-grown hairs or a tendency to produce in-grown hairs. Consult your doctor first.
- ▶ **Any minor injury resulting from hair removal may allow bacteria to penetrate the injury site potentially causing small scars or a change in pigmentation of the skin. The risk of infection may be minimized by thoroughly cleaning the rotating discs before and/or after each use. (See Cleaning section).**
- ▶ The epilator should only be used after prior consultation with your doctor if you have or experience:
 - Open wounds
 - Eczema, psoriasis (scaly eczema), inflamed skin reactions such as folliculitis, skin rashes or the tendency to allergy or allergic skin reactions
 - Immune deficiency or disorders
 - Couperose, rosacea, or varicose veins
 - Pregnancy
 - Reduced skin immunity as a result of diabetes, pregnancy, Raynaud's disease, etc.
 - Hemophilia
 - If you have moles, raised skin bumps, etc.
- ▶ If you have been or begin taking hormone medication, or recently been pregnant, a change in your hormone levels may influence the thickness, color or amount of hair growth. This is caused by the hormonal changes, not by this method of hair removal.
- ▶ Clean the epilating head after each use following **CLEANING** instructions.

To Charge/Recharge

- ▶ Fully charge Epilator before using for the first time or after non-use for a long period of time.
- ▶ Charging, recharging, or using Epilator at temperatures below 40°F or higher than 95°F adversely affects lifespan of the battery.

1 Be certain Epilator is OFF.

2 Insert the appliance plug directly into the Epilator (Fig. 1) and plug the adapter into any 120V AC outlet. Use only the cord provided.

3 The Charging Light on the appliance will blink to indicate the Epilator is charging (Fig. 2).

▶ It will take approximately 1 hour to fully charge the Epilator for a cordless operating time of up to 40 minutes.

4 After the Epilator is fully charged, the charging light will light up white continuously (Fig. 3).

NOTE: After 20 minutes the charging light goes out.

5 If the batteries run low while using, the Charging Light will blink red.

6 If the batteries are completely empty, the Charging Light lights up red continuously. Simply connect cord provided to Epilator and outlet to continue epilating.

7 Disconnect the cord and unplug from electrical outlet.

How To Use Your Epilator

- ▶ Use this Epilator for its intended household use as described in this manual.
- ▶ Make sure your skin is clean, free from grease and creams. Do not apply any cream before using. Hairs are easier to remove after a bath or a shower, but your skin should be completely dry before using your Epilator.
- ▶ Epilation is easier and more comfortable when the hair has the optimum length of 1/8 - 5/32in/3-4mm.
- ▶ Regular massages with an exfoliation glove or loofah pad at least 2 days before epilating may help prevent in-grown hairs.
- ▶ If you experience some skin irritation after epilating, epilate in the evening as most skin irritation disappears overnight. This effect will gradually lessen with each use.
- ▶ After each use, you may want to apply a nonalcohol based mild cream or body lotion which will help reduce the possibility of skin irritation. Be certain it does not contain alcohol as it may cause discomfort.

Epilating the legs

- ▶ If you already have some experience with epilation, simply use the epilating head with the basic epilation cap.
 - ▶ If you are new to epilation, start epilating with the optimal performance cap. This cap ensures optimal skin contact and its pivoting head stretches the skin and prepares the hairs for epilation.
 - ▶ If your hairs lie flat on your skin, use the active hairlifter with active massage. The active hairlifter with active massage not only lifts up the hairs but its active massaging roller also minimises the pulling sensation of epilation.
- 1** Before first use, clean the epilating head. See 'Cleaning' section.
 - 2** Press the on/off button once to switch on the Epilator.
 - ▶ The Epilator starts running at Speed II and the bottom speed setting indication II on the Epilator lights up (Fig. 4).
Select Speed II (high speed) for larger surfaces and thicker hair areas.
 - ▶ If you want to use speed I, press the on/off button a second time. The top speed setting indication I lights up on the Epilator (Fig. 5).
Select Speed I for areas with little hair growth, for hard-to-reach places and for areas when bones close to the skin's surface, such as knees and ankles.
 - ▶ When you press the on/off button a third time, the epilator switches off.
 - 3** Hold the Epilator perpendicular to your leg at a 90° degree angle with the ON/OFF button pointing in the direction you are going to move the appliance (Fig. 6).
 - 4** Keep the skin taut using your fingers to stretch the skin so the rotating discs can grasp the raised hairs.
 - 5** Gently press and move the Epilator slowly over the skin against the direction of hair growth. If you press too lightly or too hard, the Epilator will not be able to grasp and remove the hairs. Experiment until you find the right settings and right amount of pressure for your type of skin and hair.
 - 6** Press the ON/OFF button to turn the Epilator OFF and clean. (See section 'Cleaning').

IMPORTANT:

- ▶ After using the Epilator, some redness or irritation may occur. This is normal and should disappear quickly.
- ▶ **This appliance is only intended for removing hair below the neck: underarms, bikini area and legs. Do not use it for any other purpose.**
- ▶ Clean the appliance after each use following **CLEANING** instructions.

Overheat protection

Note: To avoid overheating of the epilator, do not press the appliance too hard onto your skin. The Epilator works best when you move it over your skin without exerting any pressure.

1 If the overheat protection is activated, the appliance turns off automatically.

The speed setting indications and the charging light blink red.

2 Let the appliance cool down.

► The lights stop blinking after 30 seconds.

3 When the appliance has cooled down, you can turn it on again.

If the lights start to blink red again, the appliance has not yet cooled down completely.

Overload protection

If you press the epilating head too hard onto your skin or when the rotating discs of the epilating head get blocked, the appliance stops and the speed setting indications start to blink red for 5 seconds.

1 Turn off appliance.

2 Check if the rotating discs of the epilating head are blocked by turning the discs with your thumb. Remove any blockage from the rotating discs.

3 Turn on the appliance again.

Travel lock

The Epilator has an integrated travel lock which prevents the appliance from accidentally being switched on during travel.

1 To activate the travel lock, press and hold the ON/OFF button for 3 seconds until the speed setting indications blink white 2 times (Fig. 7).

► The Epilator starts running and stops immediately when the travel lock becomes active.

2 To deactivate the travel lock, press and hold the on/off button for 3 seconds until the speed setting indications blink white 2 times (Fig. 8).

NOTE: The travel lock is deactivated automatically when you connect the appliance to the outlet.

Cleaning

IMPORTANT

- ▶ Always switch the Epilator OFF and remove plug from electrical outlet and epilator before cleaning.
- ▶ Never immerse this appliance in water.
- ▶ Do not use scouring pads, abrasive cleaners or aggressive liquids such as gasoline or acetone to clean the Epilator.
- ▶ It is essential for hygienic reasons and optimum performance that the epilating head and rotating discs are cleaned after each use.
- ▶ Never clean, remove, or replace epilating head while motor is ON. The rotating discs are not removable from the epilating head.
- ▶ Do not apply pressure or touch rotating discs with hard objects as this may dent or damage the discs. If damage occurs, discontinue use immediately.

1 Remove the epilating head by pressing the release knob (1) and remove epilating head from the appliance (2) (Fig. 9).

2 Remove loose hairs from the epilating discs and attachments with the brush (Fig. 10).

Never try to detach the epilating discs from the appliance.

3 Rinse the epilating head thoroughly under warm tap water while turning the discs with your thumb (Fig. 11).

4 Shake off excess water (Fig. 12) and dry epilating head completely with a soft towel.

Do not replace the epilator head onto the appliance until it is completely dry.

5 Place the epilating head back onto the appliance and press until it snaps into place. You will hear a click (Fig. 13).

The epilating head only fits onto the appliance in one direction.

This Epilator has not other user-serviceable parts. For assistance, call 1-800-243-7884.

Storage

- ▶ Be sure Epilator is turned OFF. Remove cord from outlet and Epilator before storing in a safe, dry location where it will not be crushed, banged, or subject to damage.
- ▶ Do not wrap cord around Epilator when storing.
- ▶ Store cord in a safe location where it will not be cut or damaged.
- ▶ Do not place or store Epilator where it can fall or be pulled into a tub or sink, water or other liquid while plugged in.
- ▶ Store the Epilator and accessories in the pouch provided.

Assistance

For assistance, visit our website:

**www.philips.com/support
or call toll free 1-800-243-7884**

Information is available 24 hours a day,
7 days a week.

Battery Removal

- ▶ This Philips Epilator contains a Lithium-Ion battery which must be disposed of properly (Fig. 14).
- ▶ Battery may only be removed when Epilator is to be discarded.
- ▶ For assistance, visit our website, www.philips.com/support or call: 1-800-243-7884.

- 1** Unplug electrical cord from outlet and Epilator before dismantling Epilator.
- 2** Allow Epilator to run until the battery is empty/depleted.
- 3** Turn Epilator OFF.
- 4** Remove epilating head and any attachments.
- 5** Remove the side panels of the Epilator with a screwdriver (Fig. 15).
- 6** Insert a screwdriver into the groove next to the socket for the appliance plug in the bottom of the appliance. Turn the screwdriver to separate the two housing halves (Fig. 16).
- 7** Remove the battery holder with the batteries from the appliance. Remove the batteries from the battery holder with a screwdriver (Fig. 17).
- 8** Cut the wires with a pair of household scissors (Fig. 18).
- 9** Do not attempt to replace batteries. Insulate battery ends by covering with tape and/or place batteries in a small plastic bag.
- 10** Discard your Epilator. Do not attempt to plug electrical cord into the outlet or recharge Epilator after the batteries have been removed.
- 11** Contact your local town or city officials for battery disposal information or call 1-800-8-BATTERY or www.rbrc.com for battery drop-off locations.

Full Two-Year Warranty

Philips Electronics North America Corporation warrants each new Philips product, Model HP6576/60 against defects in materials or workmanship for a period of two years from the date of purchase, and agrees to repair or replace any defective product without charge.

IMPORTANT: This warranty does not cover damage resulting from accident, misuse or abuse, lack of reasonable care, the affixing of any attachment not provided with the product or loss of parts or subjecting the product to any but the specified voltage.* Use of unauthorized replacement parts will void this warranty.

PHILIPS ELECTRONICS NORTH AMERICA CORPORATION WILL NOT PAY FOR WARRANTY SERVICE PERFORMED BY A NON-AUTHORIZED REPAIR SERVICE AND WILL NOT REIMBURSE THE CONSUMER FOR DAMAGE RESULTING FROM WARRANTY SERVICE PERFORMED BY A NON-AUTHORIZED REPAIR SERVICE.

NO RESPONSIBILITY IS ASSUMED FOR ANY SPECIAL, INCIDENTAL OR CONSEQUENTIAL DAMAGES.

In order to obtain warranty service, simply go to www.philips.com or call 1-800-243-7884 for assistance. It is suggested that for your protection you return shipments of product by insured mail, insurance prepaid. Damage occurring during shipment is not covered by this warranty. **NOTE:** No other warranty, written or oral, is authorized by Philips Electronics North America Corporation. This warranty gives you specific legal rights, and you may also have other rights which vary from state to state. Some states do not allow the exclusion or limitation of incidental or consequential damages, so the above exclusion and limitations may not apply to you. *Read enclosed instructions carefully.

Manufactured for:

Philips Consumer Lifestyle

A Division of Philips Electronics North America Corporation

P.O. Box 10313, Stamford, CT 06904



This symbol on the product's nameplate means it is listed by Underwriters' Laboratories, Inc.

PHILIPS is a Registered Trademark of Koninklijke Philips Electronics N.V.

© 2011 Philips Electronics North America Corporation. All Rights Reserved.

PHILIPS

45-DAY MONEY-BACK GUARANTEE

If you are not fully satisfied with your Philips Epilator, send the product back and we'll refund you the full purchase price.

The Epilator must be shipped prepaid by insured mail, insurance prepaid, and have the original sales receipt, indicating purchase price and the date of purchase, enclosed. We cannot be responsible for lost mail. The Epilator must be postmarked no later than 45 days after the date of purchase. Philips reserves the right to verify the purchase price of the product and limit refunds not to exceed suggested retail price.

To obtain money-back guarantee return authorization form, call 1-800-243-7884 for assistance. Please allow 4-6 weeks for delivery of check.