

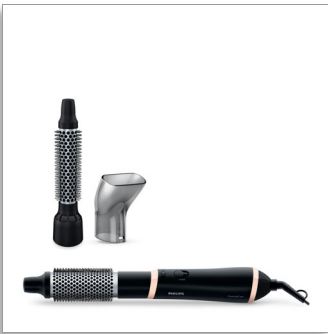


Philips EssentialCare
Airstyler

EssentialCare

Easy dry & style for all lengths of hair

Dry & style at once - the new Philips Essential Care airstyler allows you to create beautiful natural styles, whilst providing care to your hair. Its 3 attachments really work on both long and short hair.



HP8661/00

Beautifully styled hair

- 800W styling power for beautiful results
- 38mm thermo brush to smoothen your hair
- Narrow concentrator for focused airflow
- Three flexible heat and speed settings for more control
- 22mm ThermoBrush to smoothen your hair

Easy to use

- Easy storage hook for convenient storage
- 2 years of worldwide guarantee
- Swivel cord to prevent tangled wires
- 1.8 m cord for maximum flexibility

Prevent damage

- Best drying temperature with ThermoProtect temperature
- Cool air setting for extra gentle drying

Highlights

1.8 m cord



1.8 m cord for maximum flexibility.

2 years guarantee



2 years of worldwide guarantee.

22mm ThermoBrush

The ThermoBrush has a small diameter of 22mm. The width of the barrel makes it the perfect styling tool for creating smooth styles and waves on hair.

38mm thermo brush



The thermo brush has an extra wide diameter of 38mm. The width of the barrel makes it the perfect styling tool for creating smooth styles and waves.

800W



This 800W airstyler creates the optimum level of airflow and gentle drying power for beautiful results every day.

Cool air setting



A cool air setting allows you to dry hair at relatively low temperature to minimize damage, which is suitable for especially fine, dry and damaged hair. And it is a perfect setting for the hot summer season!

Easy storage hook

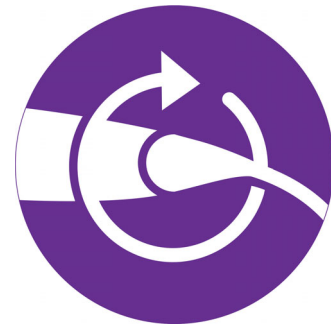


The rubberised hook is located at the base of the handle and provides another storage option, particularly convenient for use in the home or when staying at a hotel.

Narrow concentrator

The concentrator of the hair dryer works by focusing the flow of air through the opening onto specific areas. This results in precise styling and is great for touch ups or to finish a hair style.

Swivel cord



Useful swivel cord technology rotates the cord to prevent tangled wires.



Philips Green Logo

Philips Green Products can reduce costs, energy consumption and CO2 emissions. How? They offer a significant environmental improvement in one or more of the Philips Green Focal Areas – Energy efficiency, Packaging, Hazardous substances, Weight, Recycling and disposal and Lifetime reliability.

Specifications

Ease of use

- Storage hook
- Swivel cord

Power

- Voltage: 220-240V
- Wattage: 800W

Attachments

- 22mm Thermobrush: For short hair
- 38mm Thermobrush: For smoothing and for waves
- Nozzle: For a focused airflow



Issue date 2018-03-28

Version: 1.0.1

© 2018 Koninklijke Philips N.V.
All Rights reserved.

Specifications are subject to change without notice.
Trademarks are the property of Koninklijke Philips N.V.
or their respective owners.

www.philips.com