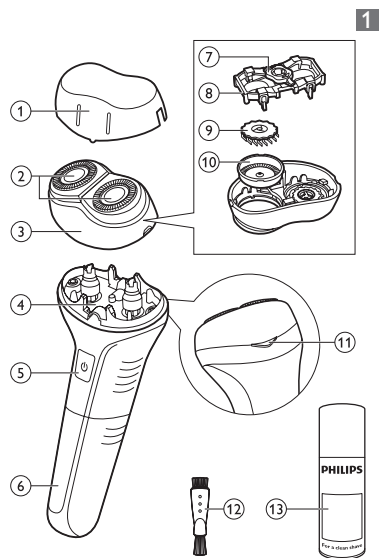
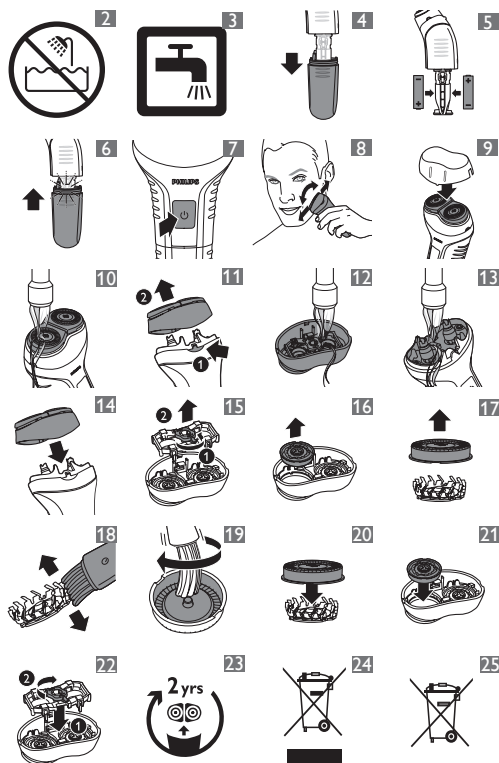


HQ902



PHILIPS



www.philips.com

100% recycled paper
 100% papier recycle
 100% 循环再造纸

4222.002.5281.1

ENGLISH

Introduction

Congratulations on your purchase and welcome to Philips! To fully benefit from the support that Philips offers, register your product at www.philips.com/welcome.

General description (Fig. 1)

- 1 Protection cap
- 2 Shaving heads
- 3 Shaving unit
- 4 Hair chamber
- 5 On/off button
- 6 Battery compartment cover
- 7 Wheel of retaining frame
- 8 Retaining frame
- 9 Cutter
- 10 Guard
- 11 Release button
- 12 Cleaning brush
- 13 Philips Cleaning Spray (HQ110) (Optional)

Important

Read this user manual carefully before you use the appliance and save it for future reference.

Warning

- This washable shaver is not suitable for shaving in the shower (Fig. 2).
- Warning: Do not use this appliance close to a bathtub, shower or other containers filled with water.
- This appliance is not intended for use by persons (including children) with reduced physical, sensory or mental capabilities, or lack of experience and knowledge, unless they have been given supervision or instruction concerning use of the appliance by a person responsible for their safety.
- Children should be supervised to ensure that they do not play with the appliance.

Caution

- Do not use the shaver if it is damaged.
- Use and store the shaver at a temperature between 5°C and 35°C.
- Remove the batteries from the appliance if you are not going to use it for a month or more.
- Be careful with hot water: Always check if the water is not too hot, to avoid burning your hands.
- Do not immerse the shaver in water or another liquid
- Do not use the shaver in combination with pre-shave lotions, creams, foams, gels or other cosmetic products.

General

- This shaver can be safely cleaned under the tap.
- This symbol means: Suitable to be cleaned under a running tap (Fig. 3).

Compliance with standards

- This Philips appliance complies with all standards regarding electromagnetic fields (EMF). If handled properly and according to the instructions in this user manual, the appliance is safe to use based on scientific evidence available today.
- This shaver complies with the applicable IEC safety standards.

Preparing for use

The appliance operates on two R6 AA 1.5-volt alkaline batteries. Preferably insert Philips batteries to get optimal shaving performance.

Inserting batteries

Make sure your hands and the appliance are dry when you insert the batteries.

- 1 Remove the battery compartment cover (Fig. 4).
- 2 Put two batteries in the battery compartment (Fig. 5).

Note: Make sure the + and - indications on the batteries match the indications in the battery compartment.

Note: The appliance does not work if the batteries have been placed incorrectly.

- 3 Slide the battery compartment cover back onto the appliance ('click') (Fig. 6).

Avoiding damage due to battery leakage

- Do not expose the appliance to temperatures higher than 35°C.
- Remove the batteries if you are not going to use the appliance for a month or more.
- Do not leave empty batteries in the appliance.

Shaving time

Two new Philips alkaline batteries offer a shaving time of 60 minutes.

Using the appliance

- 1 Remove the protection cap.
- 2 Press the on/off button to switch on the shaver (Fig. 7).
- 3 Move the shaving heads over your skin. Make both straight and circular movements (Fig. 8).

Note: Shave on a dry face only. Do not use the shaver in combination with gel, foam or water.



Note: Your skin may need 2 or 3 weeks to get accustomed to the Philips shaving system.

- 4 Press the on/off button to switch off the shaver.
- 5 Clean the shaver after every shave, see chapter 'Cleaning and maintenance'.
- 6 Put the protection cap on the shaver after use to prevent damage and to avoid dirt accumulation in the shaving heads (Fig. 9).

Note: Make sure that the lug of the protection cap covers the release button.

Cleaning and maintenance

Never use scouring pads, abrasive cleaning agents or aggressive liquids such as petrol or acetone to clean the appliance.

Clean the shaver after every shave to guarantee better shaving performance. For the best cleaning result, we advise you to use Philips Cleaning Spray (HQ110). Ask your Philips dealer for information.

Note: Philips Shaving Head Cleaning Spray (HQ110) may not be available in all countries. Contact the Consumer Care Centre in your country about the availability of this accessory.

After every shave: shaving unit and hair chamber

Never rinse the shaver when the battery compartment is open. Always make sure the battery compartment cover is properly attached before you start rinsing the shaver.

Be careful with hot water. Always check if the water is not too hot, to avoid burning your hands.

- 1 Switch off the shaver.
- 2 Rinse the outside of the shaving unit under a hot tap for some time (Fig. 10).
- 3 Press the release button (1) and pull the shaving unit in a straight upward movement off the shaver (2) (Fig. 11).
- 4 Rinse the inside of the shaving unit under a hot tap for some time (Fig. 12).
- 5 Rinse the hair chamber under a hot tap for some time (Fig. 13).
- 6 Put the shaving unit back onto the shaver (Fig. 14).

Every two months: shaving heads

Note: Do not use cleaning agents or alcohol to clean the shaving heads. Only use Philips Cleaning Spray (HQ110).

- 1 Switch off the shaver.

- 2 Press the release button (1) and pull the shaving unit in a straight upward movement off the shaver (2) (Fig. 11).
- 3 Turn the orange wheel anticlockwise (1) and remove the retaining frame (2) (Fig. 15).
- 4 Remove and clean one shaving head at a time. Each shaving head consists of a cutter and a guard (Fig. 16).

Note: Do not clean more than one cutter and guard at a time, since they are all matching sets. If you accidentally mix up the cutters and guards, it may take several weeks before optimal shaving performance is restored.

- 5 Remove the guard from the cutter (Fig. 17).
- 6 Clean the cutter with the short-bristled side of the cleaning brush. Brush carefully in the direction of the arrows (Fig. 18).
- 7 Clean the guard with the long-bristled side of the cleaning brush (Fig. 19).
- 8 Put the cutter back into the guard after cleaning (Fig. 20).
- 9 Put the shaving heads back into the shaving unit (Fig. 21).
- 10 Put the retaining frame back into the shaving unit (1) and turn the orange wheel clockwise (2) (Fig. 22).
- 11 Put the shaving unit back onto the shaver (Fig. 14).

Storage

Store the appliance in a dry place.

Store the appliance at a temperature between 5°C and 35°C.

- 1 Switch off the shaver.
- 2 Put the protection cap on the shaver after use to prevent damage and to avoid dirt accumulation in the shaving heads (Fig. 9).

Note: Make sure that the lug of the protection cap covers the release button.

Replacement

Replace the shaving heads every two years for optimal shaving results.

Replace damaged or worn shaving heads with Philips HQ56 shaving heads only.

For instructions on how to remove the shaving heads, see chapter 'Cleaning and maintenance, section 'Every two months: shaving heads'.

Accessories

To retain the top performance of your shaver, make sure you clean it regularly and replace its shaving heads at the recommended time.

Shaving heads

- We advise you to replace your shaving heads every two years. Always replace them with Philips HQ56 shaving heads only (Fig. 23).

Cleaning

- Use Philips Cleaning Spray (HQ110) to clean the shaving heads thoroughly.

Environment

- Do not throw away the appliance with the normal household waste at the end of its life, but hand it in at an official collection point for recycling. By doing this, you help to preserve the environment (Fig. 24).
- Batteries contain substances that may pollute the environment. Do not throw away empty batteries with the normal household waste, but dispose of them at an official collection point for batteries. Always remove the batteries before you discard and hand in the appliance at an official collection point (Fig. 25).

Guarantee and service

If you need service or information or if you have a problem, please visit the Philips website at www.philips.com or contact the Philips Consumer Care Centre in your country. You find its phone number in the worldwide guarantee leaflet. If there is no Consumer Care Centre in your country, go to your local Philips dealer.

Guarantee restrictions

The shaving heads (cutters and guards) are not covered by the terms of the international guarantee because they are subject to wear.

Troubleshooting

This chapter summarises the most common problems you could encounter with the appliance. If you are unable to solve the problem with the information below, contact the Consumer Care Centre in your country.

Problem	Possible cause	Solution
The shaver does not shave as well as it used to.	The shaving heads are dirty. You have not cleaned the shaver well enough or you have not cleaned it for a long time.	Clean the shaving heads thoroughly before you continue shaving. See chapter 'Cleaning and maintenance'.

Problem	Possible cause	Solution
	Long hairs obstruct the shaving heads.	Clean the cutters and guards with the cleaning brush supplied. See chapter 'Cleaning and maintenance', section 'Every two months: shaving heads'.
	The shaving heads are damaged or worn.	Replace the shaving heads. See chapter 'Replacement'.
	The batteries are low.	Replace the batteries. See chapter 'Preparing for use'.
The shaver does not work when I press the on/off button.	The batteries are placed incorrectly.	Make sure the + and - indications on the batteries match the indications in the battery compartment.
	The batteries are empty.	Replace the batteries. See chapter 'Preparing for use'.
My skin is irritated after shaving.	Your skin needs time to get used to the Philips shaving system.	Skin irritation during the first 2-3 weeks of use is possible. After this period, the skin irritation usually disappears.
The rotation speed of the shaving heads is slower than usual	Too much dirt has collected in the shaving heads.	Clean the shaving heads. See chapter 'Cleaning and maintenance'.
	The batteries are low.	Replace the batteries. See chapter 'Preparing for use'.
The appliance makes a strange noise.	Too much dirt has collected in the shaving heads.	Clean the shaving heads. After cleaning, lubricate the central point on the inside of the guards with Philips Cleaning Spray (HQ110). See chapter 'Cleaning and maintenance'.

Problem	Possible cause	Solution
	The shaving heads are damaged or worn.	Replace the shaving heads. See chapter 'Replacement'.

简体中文

简介

感谢您的惠顾，欢迎光临飞利浦！为了您能充分享受飞利浦提供的支持，请在 www.philips.com/welcome 上注册您的产品。

一般说明 (图 1)

- 1 保护盖
- 2 剃须刀头
- 3 剃毛刀头部件
- 4 毛发储藏室
- 5 开/关按钮
- 6 电池仓盖
- 7 固定架的滚轮
- 8 固定架
- 9 刀片
- 10 网罩
- 11 释放钮
- 12 清洁刷
- 13 飞利浦清洁喷雾剂 (HQ 110) (可选)

注意事项

使用本产品之前，请仔细阅读本使用说明书，并妥善保管以备日后参考。

警告

- 警告符号注释：禁止在洗澡或淋浴时使用。(图 2)
- 警告：不要在盛水的浴缸、淋浴、洗脸盆或其他器皿附近使用本器具。(图2)
- 本产品不打算由肢体不健全、感觉或精神上有障碍或缺乏相关经验和知识的人(包括儿童)使用，除非有负责他们安全的人对他们使用本产品进行监督或指导。
- 应照看好儿童，确保他们不玩耍本产品。

注意

- 如果剃须刀已损坏，请勿再使用。
- 必须在 5° C 至 35° C 之间的温度下使用和存放剃须刀。
- 如果超过一个月不使用本产品，请从产品中取出电池。
- 使用热水时一定要小心。切记先检查水温是否太高，以防手被烫伤。
- 不要将剃须刀浸入水中或其他液体中
- 请勿将本剃须刀与剃须润滑液、面霜、泡沫、凝胶或其它护肤产品结合使用。

概述

- 这款剃须刀可放心在水龙头下清洗。
- 符号注释：适合用在打开的水龙头下进行清洗。(图 3)

符合标准

- 这款飞利浦产品符合关于电磁场 (EMF) 的相关标准。据目前的科学证明，如果正确使用并按照本用户手册中的说明进行操作，本产品是安全的。
- 这款剃须刀符合 IEC 家电安全标准。

使用准备

本产品使用两节 R6 AA 1.5 伏碱性电池。最好插入飞利浦电池，以实现最佳的剃须效果。

插入电池

确保您在安装电池时双手和产品都是干的。

- 1 卸下电池仓盖。(图 4)
 - 2 将两节电池放入电池仓。(图 5)
- 注意：确保电池的正负极指示与电池仓内的指示一致。
- 注意：如果电池装错，则产品就不会工作。
- 3 将电池仓盖滑回产品上 (“咔哒”一声)。(图 6)

防止因电池泄漏而引起的损坏

- 切勿将产品暴露在温度高于 35° C 的环境中。
- 如果一个月或一个月以上不使用本产品，则将电池取出。
- 切勿将耗尽的电池留在产品中。

剃须时间

两节全新飞利浦碱性电池可供 60 分钟剃须。

使用本产品

- 1 取下保护盖。
- 2 按下开/关按钮启动剃须刀。(图 7)
- 3 将剃须刀头在皮肤上移动。作直线和迂回动作。(图 8)

注意：仅限在干爽的面部剃须。请勿将本剃须刀与凝胶、剃须泡沫或水结合使用。

注意：您的皮肤可能需要 2 到 3 周才能适应飞利浦剃须系统。

- 4 按开/关按钮关闭剃须刀电源。
- 5 每次剃须后均应清洁剃须刀 (请参阅“清洁和保养”一章)。
- 6 使用后请盖上剃须刀保护盖，以防止损坏剃须刀头并避免其内积聚灰尘。(图 9)

注意：确保保护盖的凸缘盖住释放钮。

清洁和保养

不要使用钢丝绒、研磨性清洁剂或腐蚀性液体 (例如汽油或丙酮) 来清洁产品。

每次剃须后均应清洁剃须刀，以保证更好的剃须效果。为了获得最佳的清洁效果，建议您使用飞利浦清洁喷雾剂 (HQ110)。有关详情，请咨询飞利浦经销商。

注意：并非所有国家/地区都销售飞利浦剃须刀头清洁喷雾剂 (HQ110)。请向当地的客户服务中心了解是否有售。

每次剃须后：清洗剃须刀头部件和胡茬储藏室

切勿在电池仓打开的情况下冲洗剃须刀。开始冲洗剃须刀之前，务必确保正确安装了电池仓盖。

使用热水时一定要小心。切记先检查水温是否太高，以防手被烫伤。

- 1 关闭剃须刀。
- 2 将剃须刀头部件的外部放在热水龙头下冲洗片刻。(图 10)
- 3 按释放按钮 (1)，垂直向上移动剃须刀头部件，将其从剃须刀 (2) 中拉出。(图 11)
- 4 将剃须刀头部件的内部放在热水龙头下冲洗片刻。(图 12)
- 5 将胡茬储藏室放在热水龙头下冲洗片刻。(图 13)
- 6 将剃须刀头组件重新安装到剃须刀上。(图 14)

每两个月：清洁剃须刀头

注意：请勿使用清洁剂或酒精来清洁剃须刀头。只能使用飞利浦清洁喷雾剂 (HQ110)。

- 1 关闭剃须刀。
- 2 按释放按钮 (1)，垂直向上移动剃须刀头部件，将其从剃须刀 (2) 中拉出。(图 11)
- 3 逆时针转动橙色轮轴 (1) 并取下固定架 (2)。(图 15)
- 4 一次取下并清洁一个剃须刀头。每个剃须刀头包含一组刀片和网罩。(图 16)

注意：不要同时清洁多组刀片和网罩，因为它们都是相互匹配的。如果不小心将刀片和网罩弄混，则需要数周时间才能恢复产品的最佳剃须性能。

- 5 从刀片上卸下网罩。(图 17)
- 6 用清洁刷的短毛一侧清洁刀片。按箭头方向小心地清洁。(图 18)
- 7 用清洁刷的长毛一侧清洁网罩。(图 19)

- 8 清洁后，将刀片重新装回至网罩。(图 20)

- 9 将剃须刀头重新放入剃须刀头部件。(图 21)

- 10 将固定架放回剃须刀头部件内 (1)，并沿顺时针方向转动橙色轴轮 (2)。(图 22)

- 11 将剃须刀头组件重新安装到剃须刀上。(图 14)

存储

将本产品存放在干燥的地方。必须在 5 摄氏度至 35 摄氏度之间的温度下存放本产品。

- 1 关闭剃须刀。
- 2 使用后请盖上剃须刀保护盖，以防止损坏剃须刀头并避免其内积聚灰尘。(图 9)

注意：确保保护盖的凸缘盖住释放钮。

更换

每两年更换一次刀头以获得最佳的剃须效果。损坏或磨损的剃须刀头只能用 HQ56 飞利浦剃须刀头更换。有关如何拆卸剃须刀头的说明，请参阅“清洁和保养”一章中的“每两个月：清洁剃须刀头”部分。

附件

为了保持剃须刀的最佳性能，请确保定期清洁并在推荐的时间更换剃须刀头。

剃须刀头

- 建议您每两年更换一次剃须刀头。务必仅使用 HQ56 飞利浦剃须刀头进行更换。(图 23)

清洁

- 使用飞利浦清洁喷雾剂 (HQ110) 彻底清洁剃须刀头。

环保

- 弃置产品时，请不要将其与一般生活垃圾堆放在一起；应将其交给官方指定的回收点。这样做有利于环保。(图 24)
- 电池包含可能污染环境的物质。不要将废电池和普通生活垃圾一同丢弃，而应交给正式的电池收集点处理。丢弃产品时，一定要将电池取出，并将产品送到官方指定的回收站。(图 25)

保修与服务

如果您需要服务或更多信息，或者有任何疑问，请访问飞利浦网站：

www.philips.com。您也可与您所在国家/地区的飞利浦客户服务中心联系 (可从全球保修卡中找到其电话号码)。如果您所在的国家/地区没有飞利浦客户服务中心，请与当地的飞利浦经销商联系。

保修条款

由于剃须刀头（刀片和网罩）属于易磨损物品，因此不在国际保修条款的涵盖范围之列。

故障种类和处理方法

本章归纳了使用本产品时最可能遇到的问题。如果您无法根据下面的信息解决问题，请联系您所在国家/地区的飞利浦客户服务中心。

问题	可能的原因	解决方法
剃须刀的剃须效果没有以前好。	剃须刀头变脏。您没有将剃须刀清洗干净，或长时间未清洁过剃须刀。	先彻底清洁剃须刀头，再继续剃须。请参阅“清洁和维护”一章。
	过长的胡须堵塞了剃须刀头。	用随附的清洁刷清洁刀片和网罩。见“清洁和保养”中“每两个月：剃须刀头”部分。
	剃须刀头已损坏或磨损。	更换剃须刀头。见“更换”一章。
	电池电量不足。	更换电池。见“使用准备”一章。
按下开/关闭按钮时，剃须刀不工作。	电池放置不正确。	确保电池的正负极指示与电池仓内的指示一致。
	电池已耗尽。	更换电池。见“使用准备”一章。
我在剃须后出现皮肤过敏。	您的皮肤需要一定的时间来适应飞利浦剃须刀。	在前 2-3 周的使用过程中，可能会出现皮肤过敏。在此之后，皮肤过敏通常会消失。
剃须刀头的转速比平时慢	剃须刀头中积聚了太多的灰尘。	清洁剃须刀头。请参阅“清洁和保养”一章。
	电池电量不足。	更换电池。见“使用准备”一章。
产品发出奇怪的噪音。	剃须刀头中积聚了太多的灰尘。	清洁剃须刀头。清洁后，用飞利浦清洁喷雾剂 (HQ110) 润滑网罩内侧的中央点。请参阅“清洁和保养”一章。
	剃须刀头已损坏或磨损。	更换剃须刀头。见“更换”一章。

PHILIPS

产品 : 飞利浦电动剃须刀
型号 : HQ902
额定电压 : 3V === IPX4
额定输入功率: 2W
生产日期 : 请见产品胡茬储藏室
产地 : 中国

珠海经济特区飞利浦家庭电器有限公司
中国珠海市三灶镇琴石工业区
邮政编码: 519040
全国顾客服务热线: 4008 800 008

本产品根据国标 GB4706.1-2005,GB4706.9-2008 制造