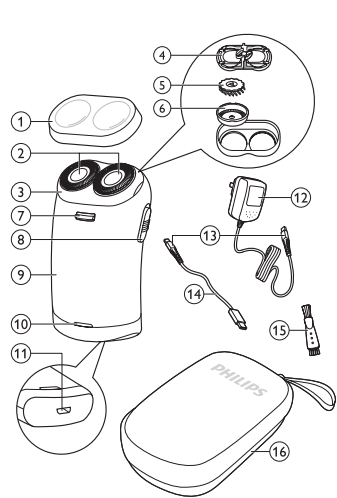




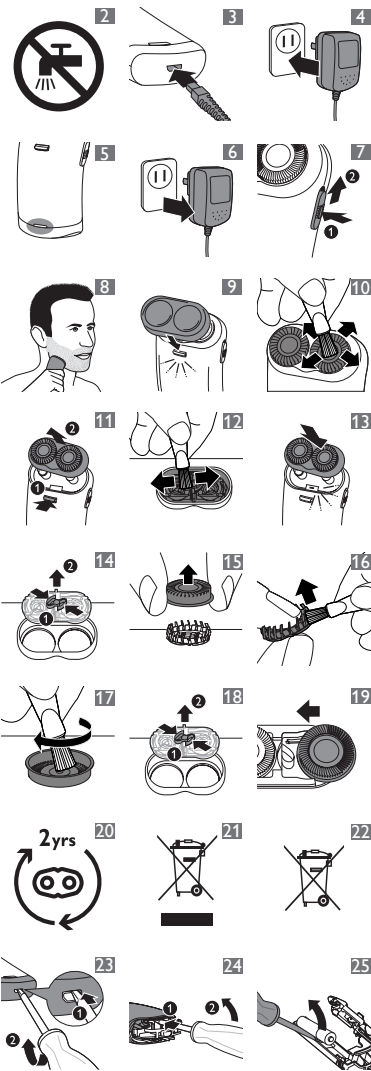
PHILIPS



www.philips.com

100% recycled paper
 100% papier recyclé
 100% 循环再造纸

4222.002.5414.2



ENGLISH

Introduction

Congratulations on your purchase and welcome to Philips! To fully benefit from the support that Philips offers, register your product at www.philips.com/welcome.

General description (Fig. 1)

- 1 Protection cap
- 2 Shaving heads
- 3 Shaving unit
- 4 Retaining frame
- 5 Cutter
- 6 Guard
- 7 Shaving unit release button
- 8 On/off slide
- 9 Shaver
- 10 Charging light
- 11 Socket for micro USB plug
- 12 Adapter (HQ80)
- 13 Micro USB plug
- 14 USB cable
- 15 Cleaning brush
- 16 Shaver storage pouch

Important

Read this user manual carefully before you use the appliance and save it for future reference.

Danger

- Warning: Keep the appliance, the adapter and the USB cable dry.
- This symbol means: Forbidden to clean under a running tap (Fig. 2).

Warning

- The adapter contains a transformer. Do not cut off the adapter to replace it with another plug, as this causes a hazardous situation.
- If you want to charge the shaver with the adapter, only use the provided adapter (HQ80).
- Warning: Do not use this appliance close to a bathtub, shower or other containers filled with water.
- Check if the voltage indicated on the adapter corresponds to the local mains voltage before you connect the appliance.
- This appliance is not intended for use by persons (including children)

with reduced physical, sensory or mental capabilities, or lack of experience and knowledge, unless they have been given supervision or instruction concerning use of the appliance by a person responsible for their safety.

- Keep the appliance and its cable out of the reach of children.

Caution

- Only use the provided adapter or the USB cable in combination with a certified adapter*.
- Do not use the shaver; the adapter or the USB cable if it is damaged.
- If the adapter or the USB cable is damaged, always have it replaced with one of the original type in order to avoid a hazard.
- Charge, use and store the shaver at a temperature between 5°C and 35°C.
- Do not use the shaver in combination with pre-shave lotions, creams, foams, gels or other cosmetic products.

Compliance with standards

- This Philips appliance complies with all standards regarding electromagnetic fields (EMF). If handled properly and according to the instructions in this user manual, the appliance is safe to use based on scientific evidence available today.
 - This shaver complies with the applicable IEC safety standards.
- *HX9200, contact the Consumer Care Centre to obtain this adapter (see chapter 'Ordering accessories').

Charging

Note: Charge the appliance when the motor stops or starts running slower.
 The shaver can be charged with the adapter or the USB cable supplied with the appliance. You can plug the USB cable into a certified adapter* or use the provided adapter.
 Make sure the shaver is switched off when you start to charge it.
 When you charge the shaver for the first time or after a long period of non-use, let it charge continuously for 12 hours. Charging normally takes approx. 8 hours.

For optimal performance, only charge the shaver when the battery is low.

Do not leave the appliance connected to the mains for more than 24 hours.

*HX9200, contact the Consumer Care Centre to obtain this adapter (see chapter 'Ordering accessories').

1 Put the micro USB plug in the shaver (Fig. 3).

2 Put the adapter in the wall socket (Fig. 4).

▶ The charging light goes on to indicate that the appliance is charging (Fig. 5).

Note: Charge the shaver for at least 8 hours but not more than 24 hours.

3 When the battery is fully charged, remove the micro USB plug from the shaver. Then remove the adapter from the wall socket (Fig. 6).

Note: You cannot use the shaver when it is connected to the mains. When the battery is empty, you have to recharge the battery before you can use the shaver again.

Cordless shaving time

A fully charged shaver has a cordless shaving time of approximately 30 minutes.

Using the appliance

Note: The shaver cannot be used when it is connected to the mains or a USB port.

Shaving

1 Remove the protection cap.

2 Press the travel lock (1) and push the on/off slide upwards (2) to switch on the shaver (Fig. 7).

3 Move the shaving heads quickly over your skin. Make both straight and circular movements (Fig. 8).

Shaving on a dry face gives the best results.
 Your skin may need 2 or 3 weeks to get accustomed to the Philips shaving system.

- After use, push the on/off slide downwards to switch off the shaver.
- Put the protection cap on the shaver every time you have used it, to prevent damage and to avoid dirt accumulation in the shaving heads (Fig. 9).

Cleaning and maintenance

Never use scouring pads, abrasive cleaning agents or aggressive liquids such as petrol or acetone to clean the appliance.

Regular cleaning guarantees better shaving performance. For the best cleaning results, we advise you to use Philips Cleaning Spray (HQ110). You can also clean the shaver in the following way:

Every week: shaving unit and hair chamber

- Switch off the shaver.
- Clean the top of the appliance with the cleaning brush supplied (Fig. 10).
- Press the release button slightly downwards (1) and remove the shaving unit (2) (Fig. 11).
- Clean the inside of the shaving unit and the hair chamber with the cleaning brush (Fig. 12).
- Put the shaving unit back onto the shaver ('click') (Fig. 13).

Every two months: shaving heads

- Switch off the shaver.
- Press the release button slightly downwards (1) and remove the shaving unit (2) (Fig. 11).
- Push the sides of the central spring towards each other (1) and then lift the retaining frame out of the shaving unit (2) (Fig. 14).
- Slide the shaving heads out of the retaining frame.

Hold your finger underneath the shaving head to keep the cutter and guard together.

- Disassemble and clean the shaving heads one by one (Fig. 15).

Note: Do not clean more than one cutter and guard at a time, since they are all matching sets. If you accidentally mix up the cutters and guards, it may take several weeks before optimal shaving performance is restored.

- Clean the cutter with the short-bristled side of the cleaning brush (Fig. 16).
Brush carefully in the direction of the arrow.
- Clean the guard with the cleaning brush (Fig. 17).
- Slide the shaving heads back into the retaining frame and put the retaining frame back into the shaving unit.
- Put the shaving unit back onto the shaver ('click') (Fig. 13).

Storage

- Always put the protection cap on the shaver after use, to prevent damage and to avoid dirt accumulation in the shaving heads (Fig. 9).
- Put the shaver in the storage pouch.

Replacement

Replace the shaving heads every two years for optimal shaving results. Replace damaged or worn shaving heads with HQ4 Philips shaving heads only.

- Switch off the shaver.
- Press the release button slightly downwards (1) and remove the shaving unit (2) (Fig. 11).
- Push the sides of the central spring towards each other (1) and then lift the retaining frame out of the shaving unit (2) (Fig. 18).
- Slide the shaving heads out of the retaining frame.

- Slide new shaving heads into the retaining frame (Fig. 19).
- Put the retaining frame back into the shaving unit.
- Put the shaving unit back onto the shaver ('click') (Fig. 13).

Ordering accessories

To purchase accessories for this appliance, please visit our online shop at www.shop.philips.com/service. If the online shop is not available in your country, go to your Philips dealer or a Philips service centre. If you have any difficulties obtaining accessories for your appliance, please contact the Philips Consumer Care Centre in your country. You find its contact details in the worldwide guarantee leaflet. To retain the top performance of your shaver, make sure you clean it regularly and replace its shaving heads at the recommended time.

Shaving heads

- We advise you to replace your shaving heads every two years. Always replace with HQ4 Philips shaving heads. (Fig. 20)

USB wall adapter

If you would like to purchase a USB wall adapter to be able to charge the shaver from the mains, only buy the Philips USB wall adapter; type HX9200, available through the Philips Consumer Care Centre.

Cleaning

- Use Philips Cleaning Spray (HQ110) to clean the shaving heads thoroughly.

Environment

- Do not throw away the appliance with the normal household waste at the end of its life, but hand it in at an official collection point for recycling. By doing this, you help to preserve the environment (Fig. 21).
- The built-in rechargeable battery contains substances that may pollute the environment. Remove the battery before you discard and hand in the appliance at an official collection point. Dispose of

the battery at an official collection point for batteries. If you have trouble removing the battery, you can also take the appliance to a Philips service centre. The staff of this centre will remove the battery for you and will dispose of it in an environmentally safe way (Fig. 22).

Removing the rechargeable battery

Only remove the battery if it is completely empty.

- Disconnect the shaver from the wall socket or from the USB port and let the shaver run until it stops.
- Insert a flat-head screwdriver between the plastic bottom of the shaver and the socket for the micro USB plug. Pry the bottom off the shaver (Fig. 23).
- Insert the flat-head screwdriver between the housing of the shaver and the printed circuit board. Use force to separate the housing halves and take out the battery holder. (Fig. 24)
- Insert the flat-head screwdriver between the battery holder and the battery. Apply some force to break the connection strips. Take out the battery (Fig. 25).

Do not connect the shaver to the mains again after the rechargeable battery has been removed.

Guarantee and service

If you need service or information or if you have a problem, please visit the Philips website at www.philips.com/support or contact the Philips Consumer Care Centre in your country. You find its phone number in the worldwide guarantee leaflet. If there is no Consumer Care Centre in your country, go to your local Philips dealer.

Guarantee restrictions

The shaving heads (cutters and guards) are not covered by the terms of the international guarantee because they are subject to wear.

Troubleshooting

This chapter summarises the most common problems you could encounter with the appliance. If you are unable to solve the problem with the information below, visit www.philips.com/support for a list of frequently asked questions or contact the Consumer Care Centre in your country.

Problem	Possible cause	Solution
The shaver does not shave as well as it used to.	The shaving heads are dirty. You have not cleaned the shaver well enough or you have not cleaned it for a long time.	Clean the shaving heads thoroughly before you continue shaving. See chapter 'Cleaning and maintenance'.
	Long hairs obstruct the shaving heads.	Clean the cutters and guards with the cleaning brush supplied. See chapter 'Cleaning and maintenance'.
	You mixed up the cutters and guards when you placed them back into the retaining frame after cleaning.	Put each cutter in the other guard. If you do not switch the cutters, it may take 2 to 3 weeks until optimal shaving performance is restored.
	The shaving heads are damaged or worn.	Replace the shaving heads. See chapter 'Replacement'.
The shaver does not work when I push the on/off slide upwards.	The rechargeable battery is empty.	Recharge the battery. See chapter 'Charging'.

Problem	Possible cause	Solution
My skin is irritated after shaving.	Your skin needs time to get used to the Philips shaving system.	Skin irritation during the first 2 to 3 weeks of use is possible. After this period, the skin irritation usually disappears.

The rotation speed of the shaving heads is slower than usual.	Too much dirt has collected in the shaving heads.	Clean the shaving heads. See chapter 'Cleaning and maintenance'.
---	---	--

The re-chargeable battery is low.	Recharge the battery. See chapter 'Charging'.
-----------------------------------	---

简体中文

简介

感谢您的惠顾，欢迎光临飞利浦！为了您能充分享受飞利浦提供的支持，请在 www.philips.com/welcome 上注册您的产品。

基本说明 (图 1)

- 1 保护盖
- 2 剃须刀头
- 3 剃毛刀头部件
- 4 固定架
- 5 刀片
- 6 网罩
- 7 剃须刀头部件释放按钮
- 8 开/关滑钮
- 9 剃须刀
- 10 充电指示灯
- 11 微型 USB 插头接口
- 12 适配器 (HQ80)
- 13 微型 USB 插头
- 14 USB 电缆
- 15 清洁刷
- 16 剃须刀存储袋

注意事项

使用本产品之前，请仔细阅读本产品使用说明书，并妥善保管以备日后参考。

危险

- 警告：保持产品、适配器和 USB 线缆干燥。
- 警告符号注释：禁止用在打开的水龙头下进行清洗。(图 2)

警告

- 电源适配器内有一个变压器。切勿自行打开更换以免发生危险。
- 如果您要通过适配器为剃须刀充电，请仅使用随附的适配器 (HQ80)。
- 警告：不要在盛水的浴缸、淋浴、洗脸盆或其他器皿附近使用本器具。
- 在将本产品连接电源前，务必检查当地的电压是否与电源适配器所标电压一致。
- 肢体不健全、精神有障碍及缺乏相关经验和知识的人（包括儿童）必须在监护人的监督及指导下使用。
- 将产品及其线缆放在儿童接触不到的地方。

注意

- 请仅使用随附的适配器或 USB 线缆与经认证的适配器组合*。
- 如果剃须刀、适配器或 USB 线缆损坏，请勿再使用。
- 如果适配器或 USB 线缆已损坏，必须用原装型号进行更换，以免发生危险。
- 必须在 5 摄氏度至 35 摄氏度之间的温度下充电、使用和存放剃须刀。
- 请勿将本剃须刀与剃须润滑液、面霜、泡沫、凝胶或其它护肤产品结合使用。

符合标准

- 这款飞利浦产品符合关于电磁场 (EMF) 的相关标准。据目前的科学证明，如果正确使用并按照本用户手册中的说明进行操作，本产品是安全的。
- 这款剃须刀符合 IEC 家电安全标准。

*HX9200，请联系客户服务中心以获得此适配器（请参阅“订购附件”一章）。

充电

注意：当马达停转或转速开始下降时，为产品充电。该剃须刀可以通过适配器或产品随附的 USB 线缆充电。您可以将 USB 线缆插入经认证的适配器* 或使用随附的适配器。请确保开始充电前，剃须刀电源已关闭。如果是第一次为剃须刀充电，或长时间未使用后充电，应让其连续充电 12 小时。充电通常需要约 8 小时。为确保最佳性能，只能在电池电量不足时为剃须刀充电。

不要将本产品与电源接通超过 24 小时。

*HX9200，请联系客户服务中心以获得此适配器（请参阅“订购附件”一章）。

1 将微型 USB 插头插入剃须刀。(图 3)

2 将电源适配器插入电源插座。(图 4)

▶ 充电指示灯亮起，表示剃须刀正在充电。(图 5)

注意：至少让剃须刀充电 8 小时，但不要超过 24 小时。

3 当电池完全充满电时，从剃须刀上拔下微型 USB 插头。然后从电源插座上拔下适配器。(图 6)

注意：连接电源时无法使用剃须刀。电池电量耗尽后，必须先为剃须刀充电，之后方可重新使用。

不接电源的剃须时间

完全充电的剃须刀在不连接电源的情况下最长可使用达 30 分钟。

使用本产品

注意：连接电源或 USB 端口时无法使用剃须刀。

剃须

1 取下保护盖。

2 按旅行锁 (1)，然后向上推动开/关滑钮 (2) 可启动剃须刀。(图 7)

3 将剃须刀头贴在皮肤上快速移动。作直线和迂回动作。(图 8) 在干爽的面部剃须效果最佳。您的皮肤可能需要 2 到 3 周才能适应飞利浦剃须系统。

4 使用后，向下推动开/关滑钮关闭剃须刀电源。

5 每次使用后，盖上剃须刀保护盖，以防止损坏剃须刀头并避免其内积聚灰尘。(图 9)

清洁和保养

不要使用钢丝球、研磨性清洁剂或腐蚀性液体（例如汽油或丙酮）来清洁产品。

为保证更好的剃须效果，剃须刀必须定期清洗。

为了获得最佳的清洁效果，建议您使用飞利浦清洁喷雾剂 (HQ110)。您也可以使用下列方式清洁剃须刀：

每周：剃须刀头组件和胡茬储藏室

1 关闭剃须刀。

2 用随附的清洁刷清洁产品顶部。(图 10)

3 轻轻按下释放钮 (1)，取下剃须刀头组件 (2)。(图 11)

4 使用清洁刷清洁剃须刀头组件内侧和胡茬储藏室。(图 12)

5 将剃须刀头组件重新安装到剃须刀上（可听到“咔哒”一声）。(图 13)

每两个月：清洁剃须刀头

1 关闭剃须刀。

2 轻轻按下释放钮 (1)，取下剃须刀头组件 (2)。(图 11)

3 捏拢中央弹簧的两侧 (1)，然后向上提起固定架，将其从剃须刀头组件中取出 (2)。(图 14)

4 将剃须刀头滑离固定架。用手指在剃须刀头下面托住，保持刀片和网罩连在一起。

5 逐个拆下和清洁剃须刀头。(图 15)

注意：不要同时清洁多组刀片和网罩，因为它们都是相互匹配的。如果不小心将刀片和网罩弄混，则需要数周时间才能恢复产品的最佳剃须性能。

6 用清洁刷的短毛一侧清洁刀片。(图 16)

按箭头方向仔细刷净。

7 用清洁刷清洁网罩。(图 17)

8 滑动剃须刀头，将其重新安装到固定架上，然后将固定架重新安装到剃须刀头组件上。

9 将剃须刀头组件重新安装到剃须刀上（可听到“咔哒”一声）。(图 13)

存储

1 使用后务必请盖上剃须刀保护盖，以防止损坏剃须刀头并避免其内积聚灰尘。(图 9)

2 请将剃须刀放入存储袋。

更换

每两年更换一次刀头以获得最佳的剃须效果。损坏或磨损的剃须刀头只能用 HQ4 飞利浦剃须刀头更换。

1 关闭剃须刀。

2 轻轻按下释放钮 (1)，取下剃须刀头组件 (2)。(图 11)

3 捏拢中央弹簧的两侧 (1)，然后向上提起固定架，将其从剃须刀头组件中取出 (2)。(图 18)

4 将剃须刀头滑离固定架。

5 将新的剃须刀头滑入固定架。(图 19)

6 将固定架重新安装到剃须刀头组件上。

7 将剃须刀头组件重新安装到剃须刀上（可听到“咔哒”一声）。(图 13)

订购附件

要购买本产品的附件，请访问我们的在线商城 www.shop.philips.com/service。如果您的国家/地区没有在线商城，请联系您的飞利浦经销商或飞利浦服务中心。如果您在购买产品的附件时遇到困难，请联系您所在国家/地区的飞利浦客户服务

中心。可在全球保修卡中找到其详细联系信息。

为了保持剃须刀的最佳性能，请确保定期清洁并在推荐的时间更换剃须刀头。

剃须刀头

- 建议您每两年更换一次剃须刀头。务必使用 HQ4 飞利浦剃须刀头进行更换。(图 20)

USB 插壁式适配器

如果您想购买 USB 插壁式适配器，以便通过电源为剃须刀充电，请仅购买飞利浦 USB 插壁式适配器；类型为 HX9200，您可以通过飞利浦客户服务中心获得。

清洁

- 使用飞利浦清洁喷雾剂 (HQ110) 彻底清洁剃须刀头。

环保

- 弃置产品时，请不要将其与一般生活垃圾堆放在一起；应将其交给官方指定的回收中心。这样做有利于环保。(图 21)
- 内置充电电池含有可能会污染环境的物质。弃置产品并将产品送到官方指定的回收站之前，应将电池取出。到官方指定的电池回收站处理电池。如果您在取出电池时遇到问题，您也可以将产品送至飞利浦维修中心。维修中心的员工会帮您取出电池，并以环保的方式进行处理。(图 22)

卸下充电电池

仅在电池电量完全耗尽后方可取出电池。

- 1 将剃须刀从电源插座或 USB 端口拔出，让剃须刀运转，直至停止为止。
- 2 将平头螺丝刀插入剃须刀塑料底部和微型 USB 插头的插孔之间。将剃须刀的底部撬开。(图 23)
- 3 将平头螺丝刀插入剃须刀外壳和印刷电路板之间。用力将外壳分为两半，取出电池舱。(图 24)
- 4 将平头螺丝刀插入电池舱和电池之间。稍微用力以断开连接片。取出电池。(图 25)

取出充电电池后，不要再将剃须刀与电源连接在一起。

保修与服务

如果您需要服务或信息，或者有任何疑问，请访问飞利浦网站：www.philips.com/support。您也可与您所在国家/地区的飞利浦客户服务中心联系（可从全球保修卡中找到其电话号码）。如果您所在的国家/地区没有飞利浦客户服务中心，请与当地的飞利浦经销商联系。

保修条款

由于剃须刀头（刀片和网罩）属于易磨损物品，因此不在国际保修条款的涵盖范围之列。

故障种类和处理方法

本章归纳了使用本产品时最常见的一些问题。如果您无法根据以下信息解决问题，请访问 www.philips.com/support 查阅常见问题列表，或联系您所在国家/地区的客户服务中心。

问题	可能的原因	解决方法
剃须刀的剃须效果没有以前好。	剃须刀头变脏。您没有将剃须刀清洁干净，或长时间未清洁过剃须刀。	先彻底清洁剃须刀头，再继续剃须。请参阅“清洁和维护”一章。
	过长的胡须堵塞了剃须刀头。	用随附的清洁刷清洁刀片和网罩。见“清洁和保养”一章。
	您清洁后将刀片和网罩装回固定架时弄混了刀片和网罩。	您将刀片放到了其他网罩中。如果您不更换刀片，可能要花 2 至 3 周的时间才能恢复最佳剃须状态。
	剃须刀头已损坏或磨损。	更换剃须刀头。见“更换”一章。

问题	可能的原因	解决方法
向上推动开/关滑钮时剃须刀不工作。	充电电池的电量已耗尽。	给电池充电。见“充电”一章。
我在剃须后出现皮肤过敏。	您的皮肤需要一定的时间来适应飞利浦剃须刀。	在前 2 至 3 周的使用过程中，可能会出现皮肤过敏。在此之后，皮肤过敏通常会消失。
剃须刀头的转速比平时慢。	剃须刀头中积聚了太多的灰尘。	清洁剃须刀头。请参阅“清洁和保养”一章。
	充电电池的电量不足。	给电池充电。见“充电”一章。

PHILIPS

产品 : 飞利浦电动剃须刀
型号 : HS199
额定电压 : 220V~
额定频率 : 50Hz
额定输入功率: 4W
生产日期 : 请见产品本体
产地 : 中国



珠海经济特区飞利浦家庭电器有限公司
中国珠海市三灶镇琴石工业区
全国顾客服务热线: 4008 800 008

本产品根据国标 GB4706.1-2005, GB4706.9-2008 制造

PHILIPS

产品 : 飞利浦电动剃须刀
型号 : HS198
额定电压 : 220V~
额定频率 : 50Hz
额定输入功率: 4W
生产日期 : 请见产品本体
产地 : 中国



珠海经济特区飞利浦家庭电器有限公司
中国珠海市三灶镇琴石工业区
全国顾客服务热线: 4008 800 008

本产品根据国标 GB4706.1-2005, GB4706.9-2008 制造