

始终如一地为您提供帮助

在以下网站上注册产品并获得支持

www.philips.com/support



HTL1182B



快速操作指南

PHILIPS

产品中有害物质的名称及含量
Names and Contents of Hazardous Substances

部件名称 Name of the parts	有害物质 Hazardous Substance					
	铅 (Pb)	汞 (Hg)	镉 (Cd)	六价铬 (Cr (VI))	多溴联苯 (PBB)	多溴二苯醚 (PBDE)
Housing 外壳	○	○	○	○	○	○
Subwoofer 超重低音箱	×	○	○	○	○	○
Loudspeakers 喇叭单元	○	○	○	○	○	○
PWBs 电路板组件	×	○	○	○	○	○
Accessories (Remote control & cables) 附件 (遥控器, 电源线, 连接线)	×	○	○	○	○	○
Batteries in Remote Control (ZnC) 遥控器电池	×	○	○	○	○	○

本表格依据 SJ/T 11364 的规定编制。

The table is formulated according to SJ/T 11364.

- ：表示该有害物质在该部件所有均质材料中的含量均在 GB/T 26572 规定的限量要求以下。
- ： Indicates that this hazardous substance contained in all of the homogeneous materials for this part is below the limit requirement in GB/T 26572.
- ×：表示该有害物质至少在该部件的某一均质材料中的含量超出 GB/T 26572 规定的限量要求。
- ×： Indicates that this hazardous substance contained in at least one of the homogeneous materials used for this part is above the limit requirement in GB/T 26572.



环保使用期限 **Environmental Protection Use Period**

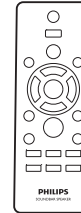
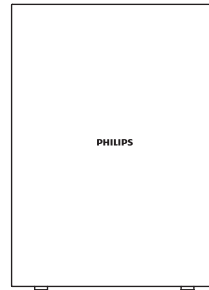
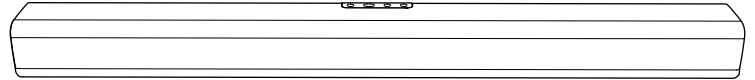
此标识指期限（十年），电子电气产品中的有害物质在正常使用的条件下不会发生外泄或突变，用户使用该电子电气产品不会对环境造成严重污染或对其人身、财产造成严重损害的期限。

This logo refers to the period (10 years) during which the hazardous substances in electronic and electrical products will not leak or mutate so that the use of these [substances] will not result in any severe environmental pollution, any bodily injury or damage to any assets.



ZH-CN 使用产品前， 请阅读所有随附的安全信息

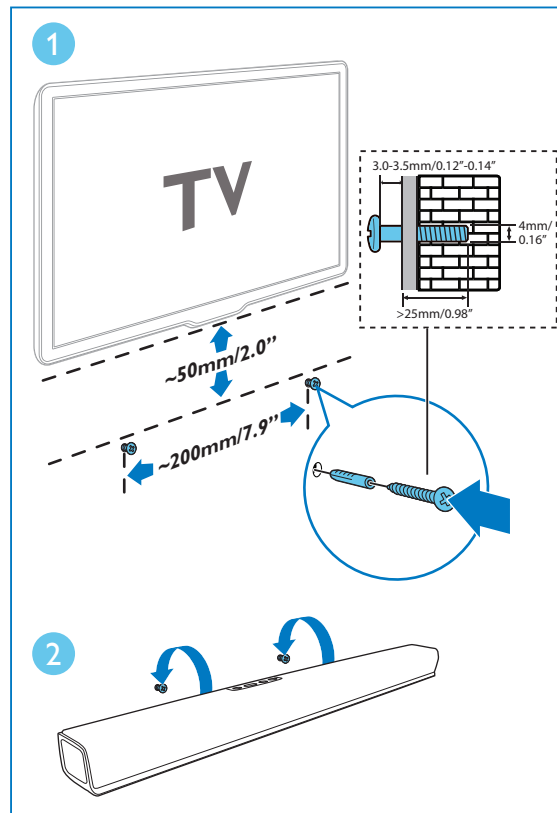
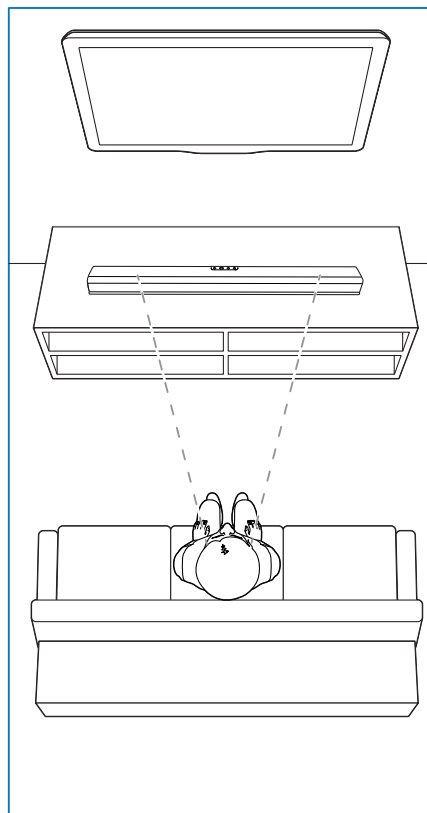
EN Before using your product, read all accompanying safety information



1

ZH-CN 摆放本产品
将本产品挂置墙上
(自选)

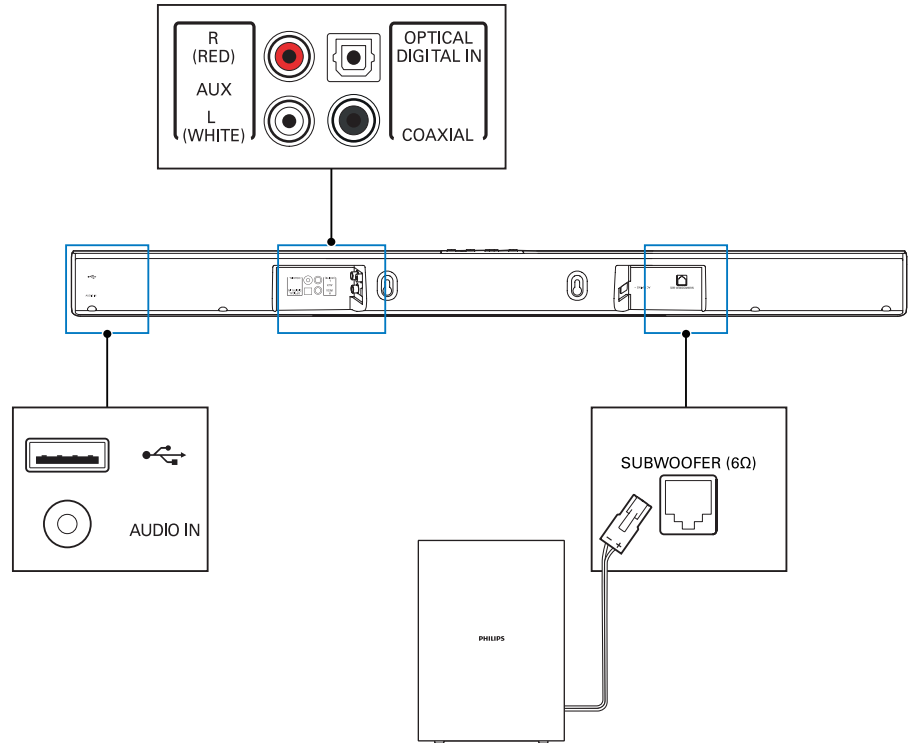
EN Position this product
Wall mount this product
(optional)



2

ZH-CN 连接本产品

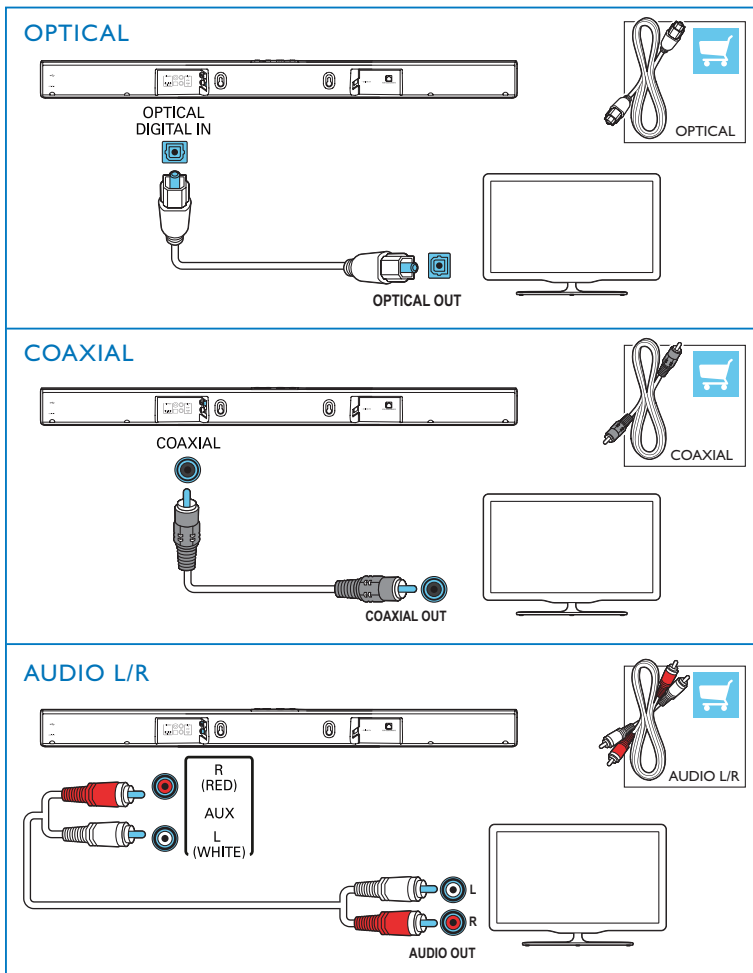
EN Connect this product



3

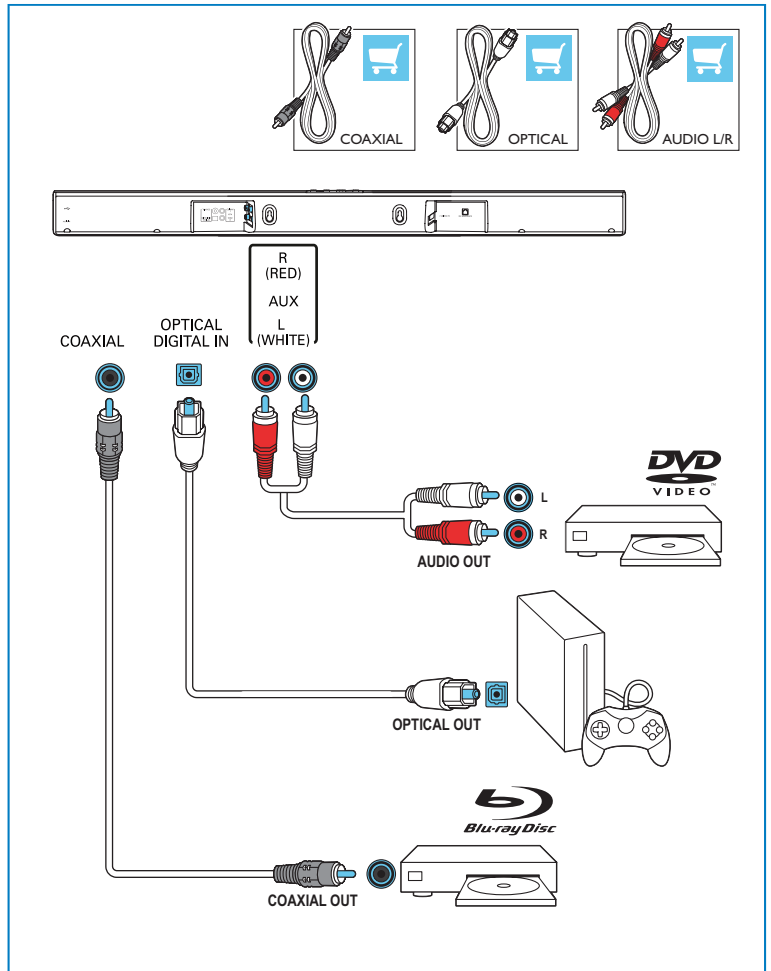
ZH-CN 选择以下一种连接方式连接电视
(需将电视静音)

EN Hear audio from TV in one of the following ways
(Mute your TV)



4

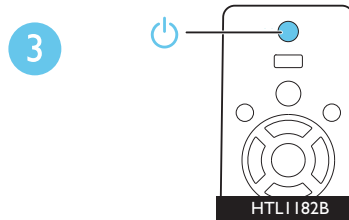
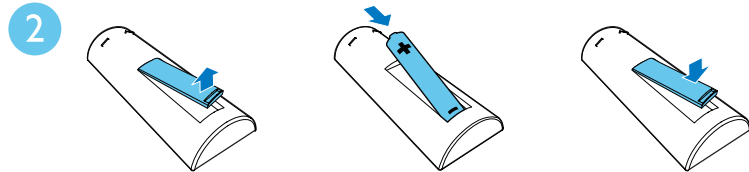
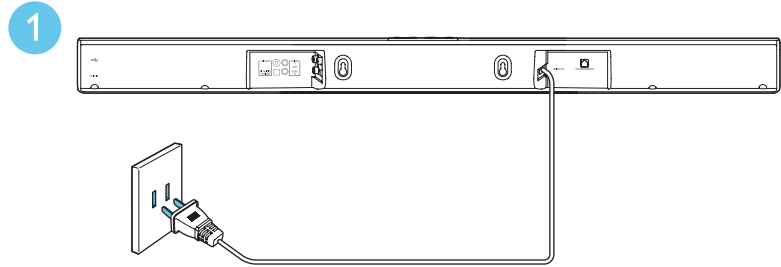
ZH-CN 通过本产品收听其它设备的音频
EN Enjoy audio from your devices



5

ZH-CN 开机

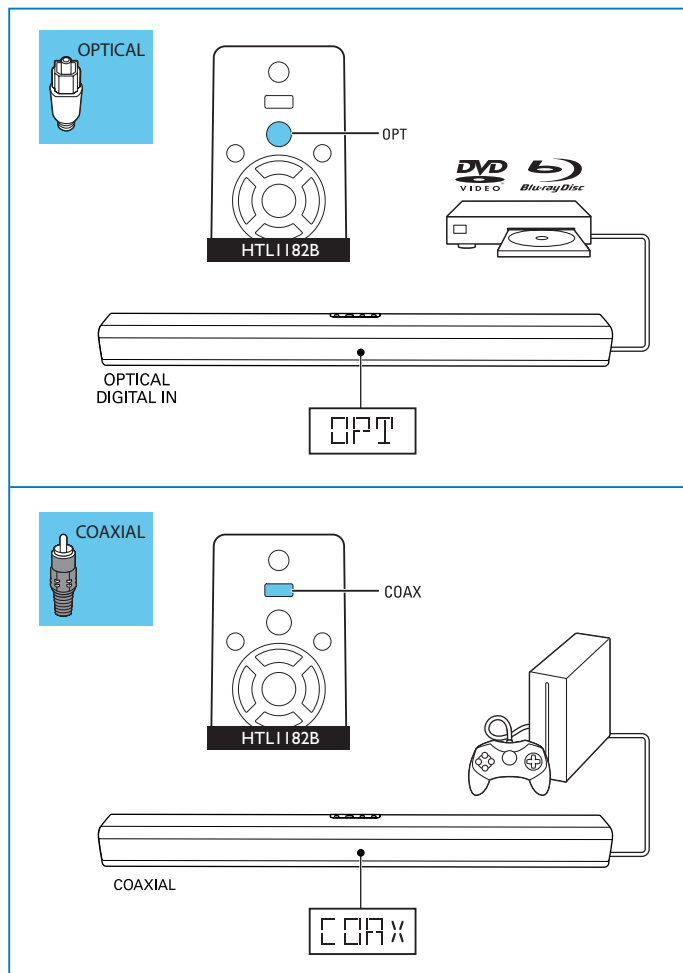
EN Switch on this product

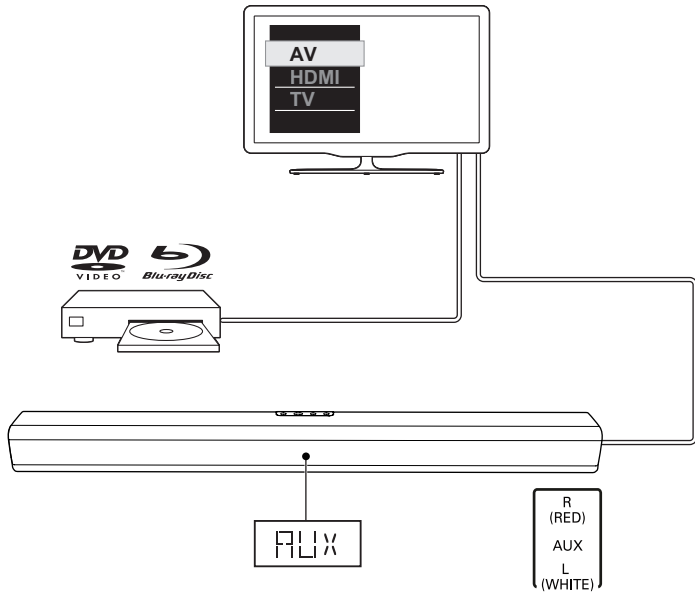
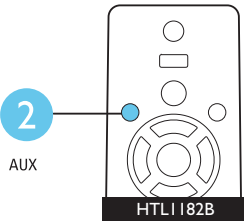
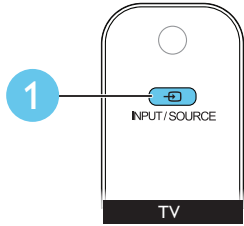
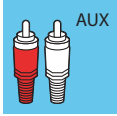


6

ZH-CN 选择正确的音频输入源

EN Select the correct audio source

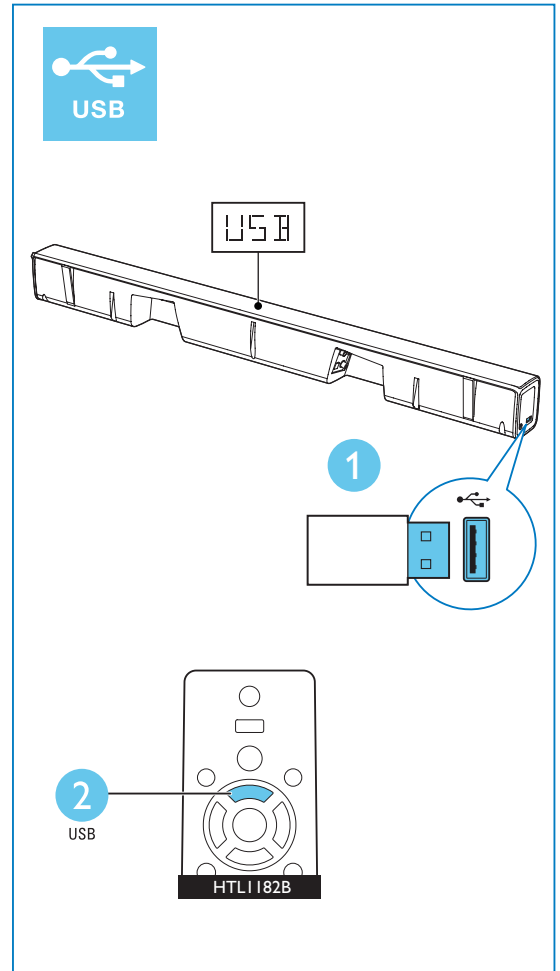
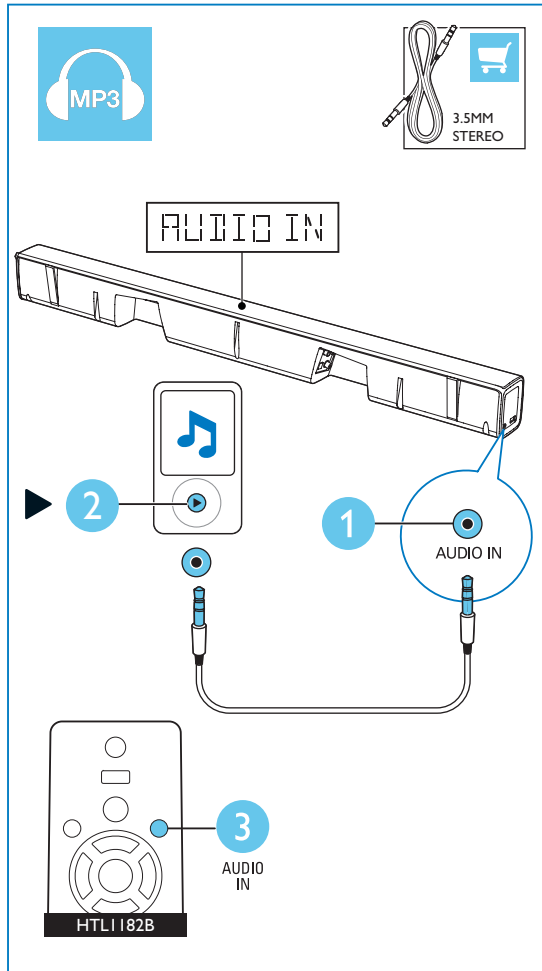




7

ZH-CN 播放其它设备

EN Play other devices





ZH-CN 访问 www.philips.com/support 更详尽地了解本产品

EN For more information about using this product, visit www.philips.com/support



www.philips.com/support



Manufactured under license from Dolby Laboratories. Dolby and the double-D symbol are trademarks of Dolby Laboratories.



Specifications are subject to change without notice
2015 © Gibson Innovations Limited. All rights reserved.
This product has been manufactured by, and is sold under the responsibility of WOOX Innovations (Shanghai) Commercial Company Ltd., and WOOX Innovations (Shanghai) Commercial Company Ltd., is the warrantor in relation to this product.
Philips and the Philips Shield Emblem are registered trademarks of Koninklijke Philips N.V. and are used under license from Koninklijke Philips N.V.

HTL1182B_93_QSG_V1.0

