



See the sound

Philips SoundBar 2013

PHILIPS

Our heritage



Chapel Radio, 1931.
This iconic radio set was nicknamed 'The Little Chapel'.

Our new levels of acoustic realism and authenticity date back to the launch of our first sound product, the Philips "Chapel" radio in 1931. Over the years, our dedication to sonic perfection has inspired innovations that have forever changed how the world hears and experiences sound.

In addition to pioneering the first ever shortwave transmitter, we invented the cassette tape and CD and also introduced the world's first Internet-connected micro Hi-Fi system.

Our ingenuity continues to this day with not only the world's first DVD/Blu-ray playback-integrated Soundbar, but also its first Surround on Demand system.

Each of our home cinema products is characterized by unparalleled sound quality. All thanks to talented acoustic engineering teams and special "Golden Ears" sound specialists who are trained to detect every audio nuance and committed to creating an acoustic experience you will love.

Today, our home cinema range runs the gamut of speaker arrangements. The Immersive Sound has a traditional 5.1 speaker setup for the sound purists. The 2.1 home cinema with two speakers and a subwoofer will fill your room with a lifelike cinematic experience from fewer speakers. If space is at a premium in your home, our sleek, unobtrusive, under-the-TV Soundbars are your solution.

Enhanced TV Sound

As TVs become thinner and thinner, the sound from in-built speakers is growing steadily weaker. Philips Soundbars give your movies, video games and music the powerful, high quality punch they deserve.

Keep it simple with Soundbar

Our Soundbars are the simplest way to bring big screen magic to life at home. Thanks to our proprietary technology, just one Soundbar gives you an experience every bit as immersive as full 5.1 surround sound.

If you have a modern home where space is at a premium style and simplicity are a must. Our eye-catching Soundbars cut down on clutter and look great in the most fashionable setting.

Choose your Soundbar

Establishing the features you need, how you'll use them and where you'll put the Soundbar, will help you decide on everything from sound quality to playback options - even color.

Philips Soundbars cover all the sound technologies and playback options you could need. The Ambisound technology offers a truly enveloping sound experience from one speaker product. The innovative Surround on Demand features detachable speaker units that can be placed behind the listener. Virtual surround sound, Dolby Digital and a range of subwoofers are also available. These technologies work their magic on sound played back through HDMI, Wi-Fi, *Bluetooth* and Blu-ray/DVD.



PHILIPS
Fidelio



Philips Fidelio SoundBar speaker
with Surround on Demand HTL9100

Sound

Surround on Demand

Integrating the simplicity of a Soundbar with the true surround sound of a 5.1 system, the Surround on Demand feature is a truly out-of-the-box idea. Combining sleek simplicity with easy to detach, wireless rear speakers; we ultimately deliver maximum audio enjoyment with optimum flexibility.



Ambisound

The end product of decades of audio engineering and processing prowess, this premier proprietary surround sound technology embodies a deep understanding of "psychoacoustics" human listening experiences. Each exquisitely designed Soundbar with Ambisound integrates carefully positioned speakers that enable the single unit you place below your TV to pump out immersive 5.1-like surround sound, regardless of your room's size or shape.



Virtual surround sound

Empowered by a wealth of ultra-advanced spatial algorithms that perfect sound waves, Virtual surround sound creates the illusion of multi-speaker sound and "wraps" you in a web of audio. Realistic and all embracing, the acoustics effectively capture high quality stereo and reprocess it into immersive surround sound without additional speakers.



Dolby technology

Equipped with state-of-the-art Dolby technology, our Soundbars deliver the best home theatre surround sound money can buy. Advanced Dolby technologies currently available on our Soundbars include loss-free sound delivery and 5.1 surround sound audio codecs for flawless surround sound reproduction.



Bass

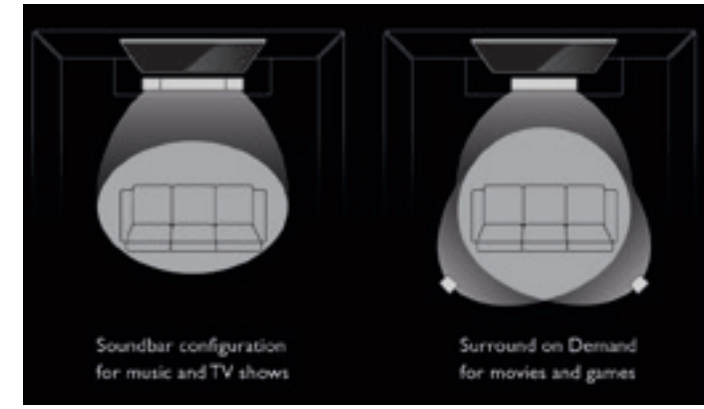
We offer a series of expertly designed bass solutions to suit different needs. This includes wireless active subwoofers with their own amplifier for powerful bass; integrated subwoofers that integrate into a Soundbar for a complete clutter-free bass solution; passive subwoofers which rely on an external amplifier delivering an deep bass solution; and the bass reflex system that delivers a strong bass experience from a compact box.



PHILIPS
Fidelio



Philips Fidelio SoundBar speaker with Surround on Demand HTL9100



Detachable wireless surround speakers placed behind the listener to offer absolute 5.1 surround sound experience with minimal clutter.

Surround on Demand

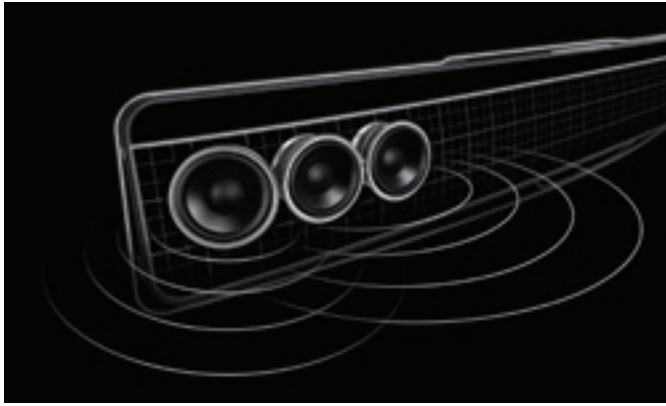
Our latest home cinema sound innovation, Surround on Demand is now available on our Fidelio HTL9100 SoundBar speaker. This innovative Soundbar won the Home Theatre category of the CES Innovations 2013 Design and Engineering Award.

The HTL9100 is capable of offering true surround sound when you need it. Simply detach the wireless surround speakers from the main Soundbar unit and place them at the rear of the room for a 5.1 surround sound experience. It's the perfect home theatre solution when you want to experience optimal quality on games and movies.

Using proprietary wireless audio technology and with surround speakers that operate on a unique frequency, there is no network interference. The result is a completely wireless surround system with lossless audio quality in the form of one clean Soundbar speaker.

What's more, with 10 hours of non-stop playback, you can easily enjoy your favourite trilogy.





Precisely angled drivers to ensure embracing multi-channel surround sound.



Ambisound

Our proprietary Ambisound technology on the HTB9150 and HTB7150 Soundbars deliver natural and immersive audio regardless of your room's size or shape.

The slimmest Ambisound equipped Soundbar, the Philips Fidelio HTB9150, is similar to a 5.1 multi-speaker surround sound system. It has six amplifiers that are precisely positioned to project a truly immersive surround sound.

Traditional processing set-ups simply beam audio straight towards you, so 5.1 sound systems must be carefully optimised to ensure maximum impact. Using specially designed technologies that make sounds coming from front and surround channels appear as if they originate all around the room, Ambisound creates the illusion that you are literally surrounded by sound.

Our engineers have placed the speaker drivers strategically in the HTB9150 and HTB7150 Soundbars to maximize the spread of sound. For this reason, front speakers point directly at you to anchor sound from your TV while surround channels are sent to outer drivers which are precisely angled away from you. The end result is more all-embracing multi-channel listening pleasure.

PHILIPS
Fidelio



Philips Fidelio SoundBar Home theater
with Ambisound HTB9150



Philips Soundbar speaker
with virtual surround sound HTL2160

Virtual surround sound

A standard on most of our Soundbars, Virtual surround sound mimics the effect of a multi-speaker surround-sound system only with fewer speakers and far less cabling.

Harnessing advanced spatial algorithms, this technology reproduces the acoustic characteristics and sonic patterns of a traditional 5.1 multi-speaker surround sound setup. It all adds up to a wide sound stage and a full surround experience for your enjoyment.



Advanced spatial algorithms perfectly replicate the sonic characteristics of an ideal 5.1-channel set up.

Dolby technology

All of our Soundbars incorporate a range of the latest technologies from audio industry pacesetter, Dolby. This includes Dolby True HD Digital Plus that delivers loss-free music and movie sound from high-definition (HD) home theatres. An industry-standard surround sound audio codec, Dolby Digital blasts out a true 5.1 channel cinematic experience while Dolby Digital ProLogic II enhances stereo music, video games, and TV programs by seamlessly converting stereo signals into natural surround sound.

Bass

Wireless active subwoofer

Our wireless active subwoofers with integrated amplifiers pump out powerful bass. As they are wireless, you can place them anywhere within a room for maximum impact. There is no easier way to improve bass in music, home theatre, video games and even whole home theatre systems. Wireless active subwoofers are available with our HTL9100 and HTB5150 Soundbars.

Passive subwoofer

The passive subwoofer has a subwoofer driver and enclosure but no amplifier. Therefore, you need to connect the cable to a separate amplifier before it will work. Such subwoofers remain extremely popular in professional audio circles if you will place the subwoofer near your soundbar traditionally, wired passive subwoofer is what suits you.

Integrated subwoofer

The integrated subwoofer not only sounds better than your TV's in-built speakers, it also gives playback a solid bass kick. In places where space is at a premium, seamlessly integrated subwoofers ensure our ultra-slim Soundbars offer rich bass without the added bulk. The integrated subwoofer is available on the HTL5120 Soundbar.

Bass reflex speaker system

The bass reflex system without the external subwoofer delivers deep bass from a compact loudspeaker box. It differs from conventional closed-box speaker systems because of an acoustically aligned added bass pipe that extends low frequency range sounds. It is available with our HTL3120 and HTL2100 Soundbars.



Philips Soundbar speaker
with integrated subwoofer HTL5120

Playback

Wi-Fi

Wi-Fi connectivity on Soundbars makes sharing of all kinds of digital content possible, from videos to photos to music and even Skype calls. Our Blu-ray Soundbars have built in Wi-Fi to allow streaming from smartphones, tablets and laptops using Philips SimplyShare app. Smart TV features are also available, turning any TV into a big-screen web surfing powerhouse. Wi-Fi is available on HTB9150, HTB7150 and HTB5150 Soundbars.



Bluetooth

Bluetooth enables you to enjoy music wirelessly from your portable devices such as smartphones, tablets and computers conveniently. You can also stream music from online music service such as Aupeo, MOG, Rhapsody, 7digital, Spotify and Tunein. *Bluetooth* is perfect for turning your home cinema system into an incredible home audio system. It is available on HTL9100, HTL5120, HTL3120 and HTL2160 Soundbars.



Blu-ray

Offering extremely enhanced HD video and audio, our Blu-ray playback-enabled Soundbars are compatible with not only Blu-ray discs, but also DVDs and CDs. More conveniently still, they can also instantly convert conventional 2D discs into eye-popping 3D playback for the ultimate in audio visual enjoyment. Blu-ray playback is available on HTB9150, HTB7150 and HTB5150 Soundbars.



USB

Standard on many of our Soundbars, USB is a wonderfully convenient way to share music, videos and photos saved on mini drives and portable devices. Simply plug into the Soundbar's USB port and pick the file you want to play.



Audio-in

We've also added a standard 3.5mm audio in jack on all of our Soundbars. In addition to connecting all kinds of Apple and Android smartphones, tablets and MP3 players, these jacks can even link up with "legacy" analogue output audio devices such as record players and cassette decks.





Philips Soundbar speaker
with integrated subwoofer HTL5120

Simplicity

Easy to set-up

Installing our Soundbars and enjoying absolute immersive surround sound really couldn't be simpler. Just plug your unit in to the TV, then connect it to the nearest output, turn it on and you're ready to go! Attach the included wall bracket and you can even wall-mount your Soundbar with just a few screws.



Easy to use


Simply connect your Soundbar to your TV, games console or MP3 player then let the in-built orientation sensor detect whether it is wall-mounted or table-top based. The Soundbar will then optimise the sound profile accordingly.

Two HDMI ports are available for connecting multiple devices. They support ARC (Audio Return Channel) which means any sound played on the TV is relayed instantly to the Soundbar, so you can enjoy surround sound.



Color

Your home is a unique and special reflection of yourself. So why not make finding a home theater system that meets your high demands less of a challenge, by checking out our range of sleek low-profile Soundbars. Available in a choice of six striking colors, each is a beautiful work of modern design that's sure to enhance the most stylish setting.



Philips Soundbar speaker
with virtual surround sound HTL2160

Choose your Soundbar

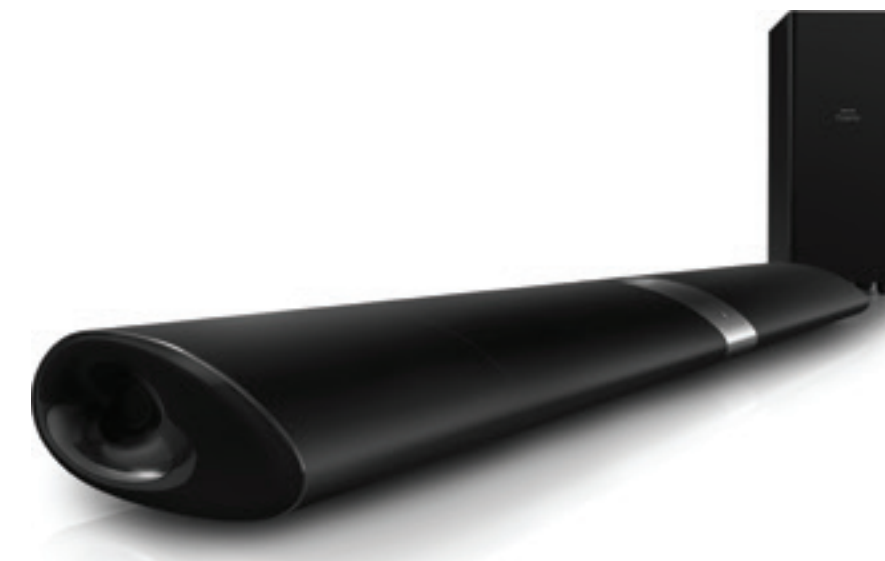
When choosing a Soundbar, be sure to think about how you intend to use it, then decide on the right Soundbar for you taking into account surround sound type, playback methods, ease of use and color.



HTB9150

The slimmest SoundBar with Ambisound yet

- Ambisound
- Powerful subwoofer
- Wi-Fi, Blu-Ray, USB, Audio in
- Smart TV - Online services
- Digital optical in
- Wall-mount, Shelf-top



HTL9100

SoundBar with detachable wireless speakers for true 5.1 surround sound experience

- Surround on Demand
- Wireless active subwoofer
- *Bluetooth*, Audio in
- HDMI x 2, Digital optical in, Orientation sensor
- Wall-mount, Shelf-top



HTB7150

Great surround sound without the clutter

- Ambisound
- Powerful subwoofer
- Wi-Fi, Blu-Ray, USB, Audio in
- Smart TV - Online services
- Digital optical in
- Wall-mount, Shelf-top



HTB5150

Powerful surround sound, no clutter

- Virtual surround sound
- Wireless active subwoofer
- Wi-Fi, Blu-Ray, USB, Audio in
- Smart TV - Online services
- HDMI in x 2, Digital optical in
- Shelf-top



HTL5120

All your entertainment - in amazing sound

- Virtual surround sound
- Integrated subwoofer
- *Bluetooth*, Audio in
- HDMI in x 2, Digital optical in, Orientation sensor
- Wall-mount, Shelf-top



HTL3120

Add great surround sound to your TV

- Virtual surround sound
- Bass reflex system
- *Bluetooth*, USB, Audio in
- HDMI in x 2, Digital optical in
- Wall-mount, Shelf-top



HTL2160

Bring music to life via *Bluetooth*

- Virtual surround sound
- Passive subwoofer
- *Bluetooth*, USB, Audio in
- Digital optical in
- Wall-mount, Shelf-top



HTL2150

Enjoy richer sound from any TV

- Virtual surround sound
- Passive subwoofer
- Audio in
- Digital optical in
- Wall-mount, Shelf-top



HTL2100

Upgrade your TV sound to new heights

- Virtual surround sound
- Bass reflex system
- Audio in
- Digital optical in
- Wall-mount, Shelf-top



Specification

Fidelio Soundbar



HTL9100

Blu-ray Soundbar



HTB9150



HTB7150



HTB5150

Soundbar speaker



HTL5120



HTL3120



HTL2160



HTL2150



HTL2100

Product	Main unit	Subwoofer	Sound	Feature	Enhancement	Bass	Output power	Playback	Feature	Format	Video	Picture	Simplicity	Connection	Matching TV	Color
	W x H x D: 1013 x 156 x 73 mm Weight: 4.2 kg	W x H x D: 200 x 200 x 504 mm Weight: 4.8 kg		Surround on Demand	Dolby Digital, Dolby Pro Logic II, DTS Digital Surround, Virtual surround sound, Treble/ bass/ volume control, Night mode, Auto volume	Wireless active subwoofer	Surround speaker: 120 W Subwoofer: 90 W Total power RMS @ 30% THD: 210 W		Bluetooth, Audio in (3.5 mm)	N/A				AUX in, Digital coaxial in, Digital optical in, HDMI 1.4 output (ARC), HDMI IN 1, HDMI IN 2, EasyLink (HDMI-CEC): One touch standby, Remote control-passthrough, System standby	46" TV and above	N/A
	W x H x D: 927 x 150 x 87 mm Weight: 5 kg	W x H x D: 196 x 396.5 x 300 mm Weight: 4.79 kg		Ambisound	Dolby Digital 5.1, Dolby Digital Plus, Dolby True HD, DTS Digital Surround, DTS-HD High Resolution Audio, DTS-HD Master Audio	Powerful subwoofer	Center speaker: 2 x 60 W Surround speaker: 4 x 90 W Subwoofer: 120 W Total power RMS @ 30% THD: 600 W		Wi-Fi, Blu-Ray, USB, Audio in (3.5 mm)	Audio: AAC, MP3, WAV, WMA, FLAC, Ogg Vorbis	Video: DivX Plus HD, MPEG1, MPEG2, MPEG4	Picture: GIF, JPEG, JPEG HD, JPEG Progressive, PNG		AUX in, iPod/iPhone: Ready (Dock sold separately), Composite video (CVBS) output, Digital optical in, Ethernet, FM antenna socket, HDMI 1.4 output (ARC), EasyLink (HDMI-CEC): One touch standby, iPod/iPhone dock jack, SD/SDHC card slot, Smart TV, MyRemote app	46" TV and above	N/A
	W x H x D: 927 x 150 x 87 mm Weight: 4.57 kg	W x H x D: 196 x 393.5 x 300 mm Weight: 4.51 kg		Ambisound	Dolby Digital 5.1, Dolby Digital Plus, Dolby True HD, DTS Digital Surround, DTS-HD High Resolution Audio, DTS-HD Master Audio	Powerful subwoofer	Subwoofer: 120 W Surround speaker: 4 x 90 W Total power RMS @ 30% THD: 480 W		Wi-Fi, Blu-Ray, USB, Audio in (3.5 mm)	Audio: AAC, MP3, WAV, WMA, FLAC, Ogg Vorbis	Video: DivX Plus HD, MPEG1, MPEG2, MPEG4	Picture: GIF, JPEG, JPEG HD, JPEG Progressive, PNG		AUX in, iPod/iPhone: Ready (Dock sold separately), Composite video (CVBS) output, Digital optical in, Ethernet, FM antenna socket, Ethernet, FM antenna socket, HDMI 1.4 output (ARC), EasyLink (HDMI-CEC): One touch standby, HDMI IN 1, HDMI IN 2, iPod/iPhone dock jack, SD/SDHC card slot, Smart TV, MyRemote app	46" TV and above	N/A
	W x H x D: 1060 x 83.1 x 194.8 mm Weight: 4.9 kg	W x H x D: 195 x 298 x 410 mm Weight: 7.2 kg		Virtual surround sound	Dolby Digital 5.1, Dolby Digital Plus, Dolby True HD, DTS Digital Surround, DTS-HD High Resolution Audio, TS-HD Master Audio; Double Bass Sound, Night mode, Treble and bass control	Wireless active subwoofer	Subwoofer: 250 W Surround speaker: 2 x 150 W Total Power RMS @ 30% THD: 550 W		Wi-Fi, Blu-Ray, USB, Audio in (3.5 mm)	Audio: AAC, MKA, MP3, RA, WMA	Video: DivX, MPG, MPEG, MPEG4, WMV, FLV, ASF, AVI	Picture: GIF, JPG, JPEG		AUX in, Digital coaxial in, Digital optical in, Composite video (CVBS) output, Ethernet, FM antenna socket, HDMI 1.4 output (ARC), EasyLink (HDMI-CEC): One touch standby, HDMI IN 1, HDMI IN 2, iPod/iPhone dock jack, Smart TV, MyRemote app	46" TV and above	N/A
	W x H x D: 1010 x 154 x 81 mm Weight: 4.0 kg			Virtual surround sound	Dolby Digital, DTS Digital Surround, Treble/bass/volume control, Night mode, Auto volume	Integrated subwoofer	Total power RMS @ 30% THD: 120 W		Bluetooth, Audio in (3.5 mm)	N/A				AUX in, Digital coaxial in, Digital optical in, HDMI 1.4 output (ARC), HDMI IN 1, HDMI IN 2, EasyLink (HDMI-CEC): One touch standby, Remote control-passthrough, System standby	40" TV and above	■ ■ ■
	W x H x D: 995 x 94 x 102.5 mm Weight: 3.5 kg			Virtual surround sound	Dolby Digital 5.1, DTS Digital Surround; Treble and bass control, Night mode, Auto volume leveller	Bass reflex system	Speaker: 60 W x 2 Total power RMS @ 30% THD: 120 W		Bluetooth, USB, Audio in (3.5 mm)	Audio: MP3, WMA				AUX in, Digital coaxial in, Digital optical in, HDMI 1.4 output (ARC), HDMI IN 1, HDMI IN 2, EasyLink (HDMI-CEC), Remote control-passthrough, One touch standby, System standby	40" TV and above	N/A
	W x H x D: 800 x 52.4 x 75.6 mm Weight: 1.2 kg	W x H x D: 165 x 240 x 295 mm Weight: 2.6 kg		Virtual surround sound	Dolby Digital, Treble and bass control	Passive subwoofer	Speaker: 15 W x 2 Subwoofer: 30 W Total Power RMS @ 30% THD: 60 W		Bluetooth, USB, Audio in (3.5 mm)	Audio: MP3, WMA				AUX in, Digital coaxial in, Digital optical in, Subwoofer out	40" TV and above	■ ■ ■ ■ ■ ■ ■ ■
	W x H x D: 800 x 52.4 x 75.6 mm Weight: 1.2 kg	W x H x D: 165 x 240 x 295 mm Weight: 2.6 kg		Virtual surround sound	Dolby Digital, Treble and bass control	Passive subwoofer	Speaker: 15 W x 2 Subwoofer: 30 W Total power RMS @ 30% THD: 60 W		Audio in (3.5 mm)	N/A				AUX in, Digital coaxial in, Digital optical in, Subwoofer out	40" TV and above	N/A
	W x H x D: 845 x 72 x 93 mm Weight: 1.93 kg			Virtual surround sound	Dolby Digital, Treble and bass control	Bass reflex system	Speaker: 2 x 20 W Total power RMS @ 30% THD: 40 W		Audio in (3.5 mm)	N/A				AUX in, Digital coaxial in, Digital optical in	40" TV and above	■ ■ ■ ■ ■ ■ ■ ■



© 2013 Koninklijke Philips Electronics N.V.

All rights reserved. Reproduction in whole or in part is prohibited without the prior written consent of the copyright owner. The information presented in this document does not form part of any quotation or contract, is believed to be accurate and reliable and may be changed without notice. No liability will be accepted by the publisher for any consequence of its use. Publication thereof does not convey nor imply any license under patent or other industrial or intellectual property rights.