

# Always there to help you

HTL3120

Register your product and get support at  
[www.philips.com/welcome](http://www.philips.com/welcome)



Question?  
Contact  
Philips



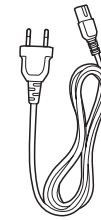
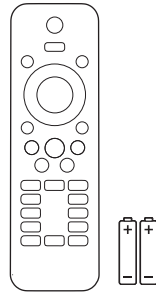
# Quick start guide

# PHILIPS



**EN** Before using your product, read all accompanying safety information

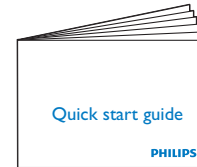
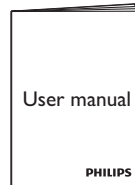
**ZH-CN** 使用产品前，请阅读所有随附的安全信息



Power Cord  
电源插头线



HDMI



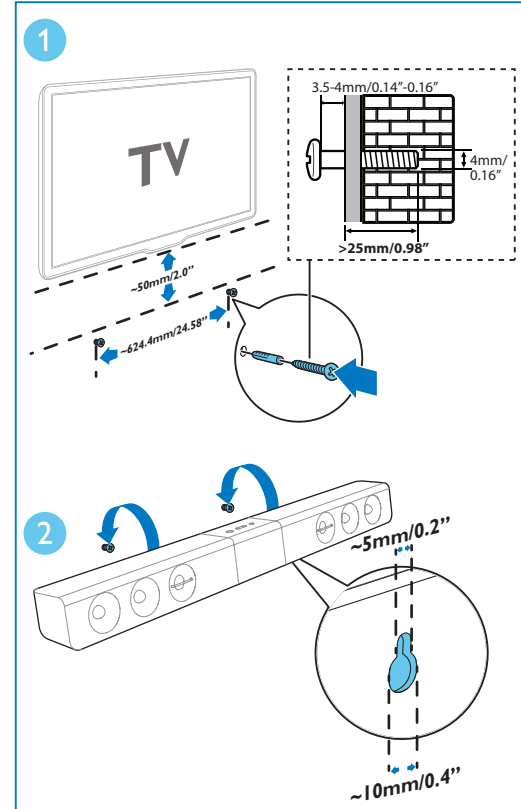
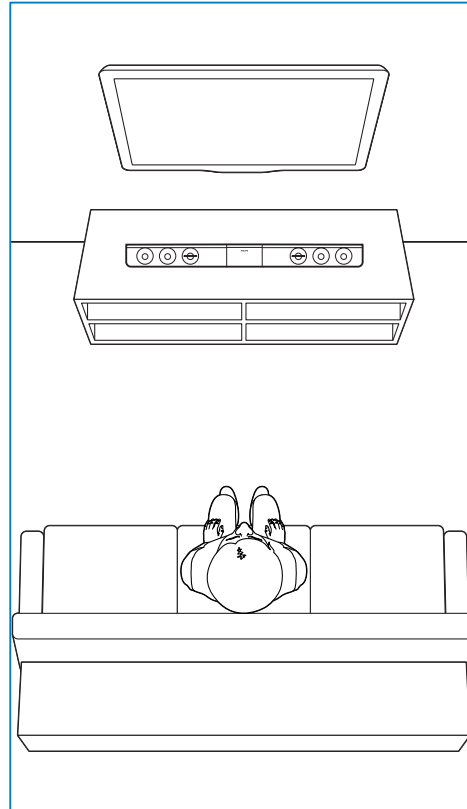
Cable Tie  
线缆束带



# 1

**EN** Position the SoundBar  
Wall mount the SoundBar (optional)

**ZH-CN** 摆放回音壁  
将回音壁安装在墙上 (可选装)

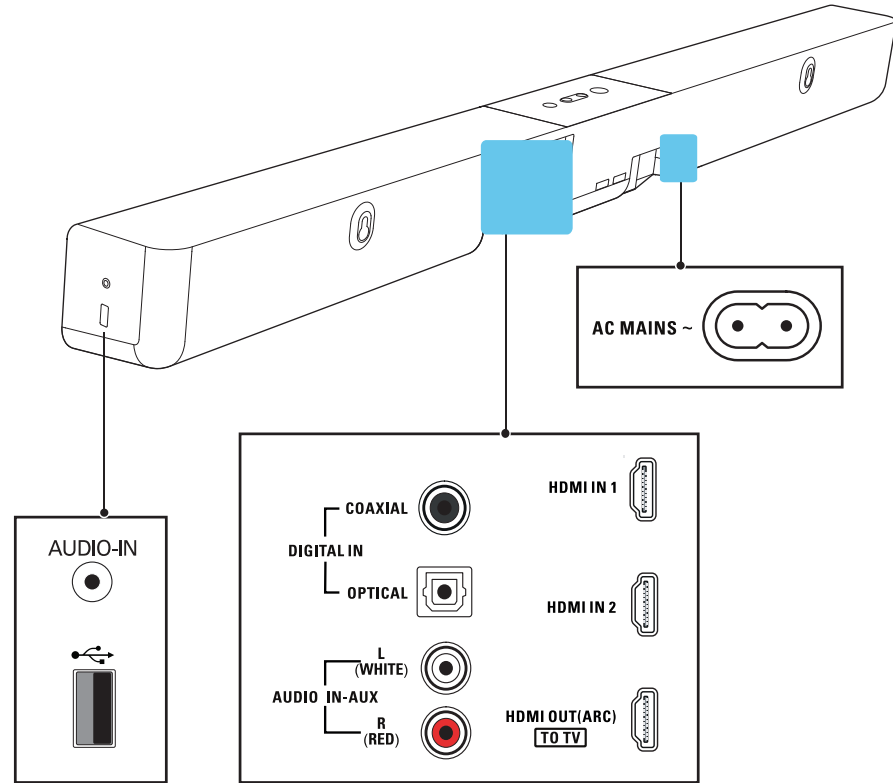




# 2

**EN** Connect the SoundBar

**ZH-CN** 连接回音壁

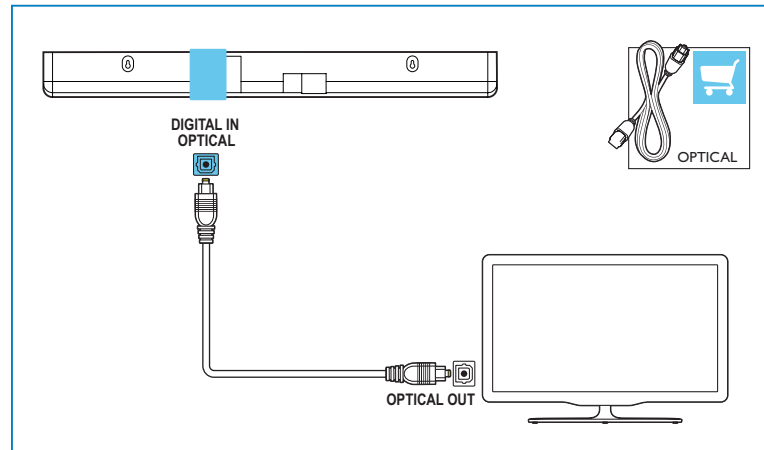
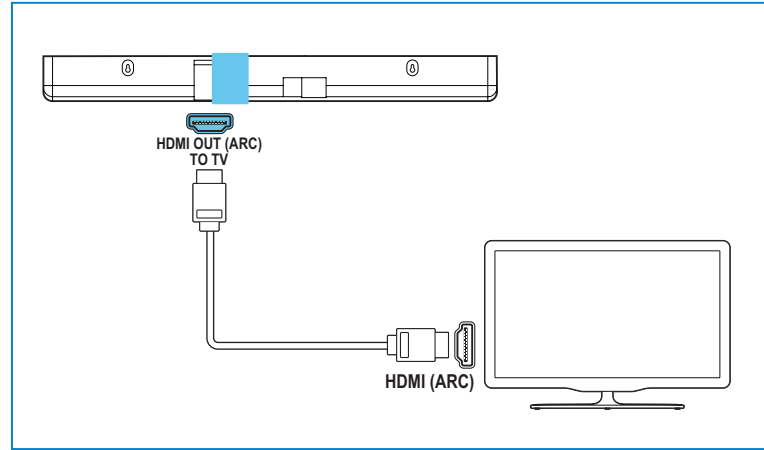


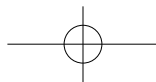
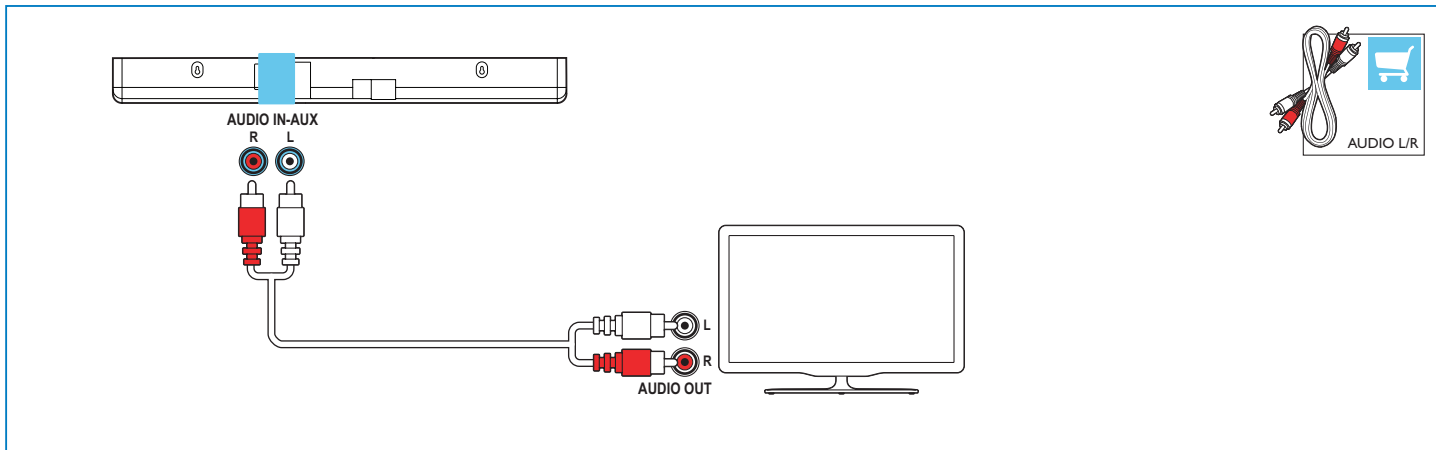
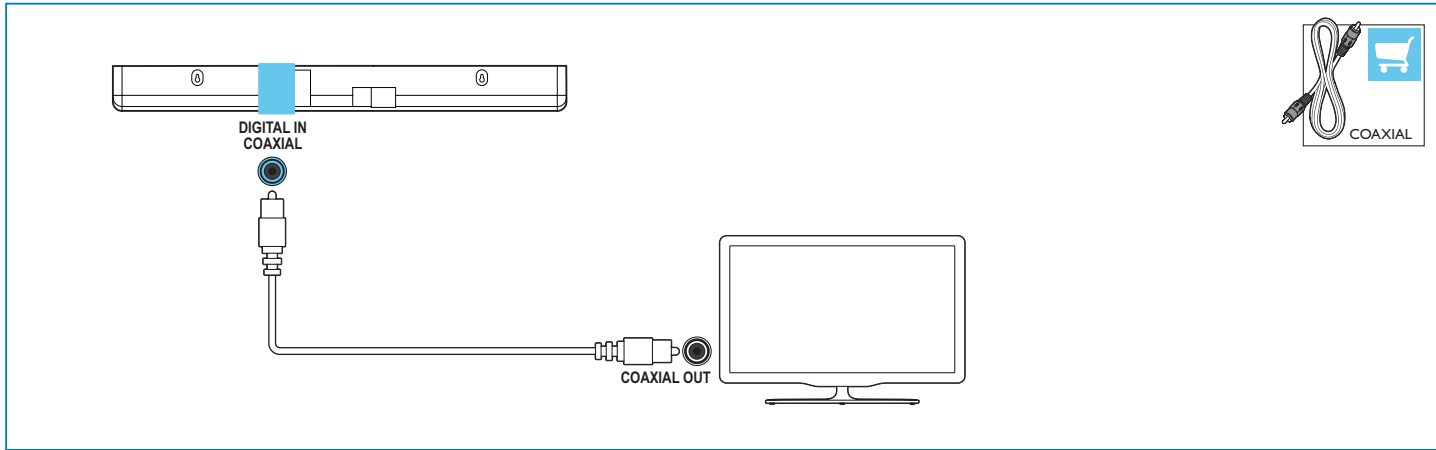


# 3

**EN** Enjoy audio from your TV in one of these ways

**ZH-CN** 选以下一种连接方式，通过回音壁播放电视声音



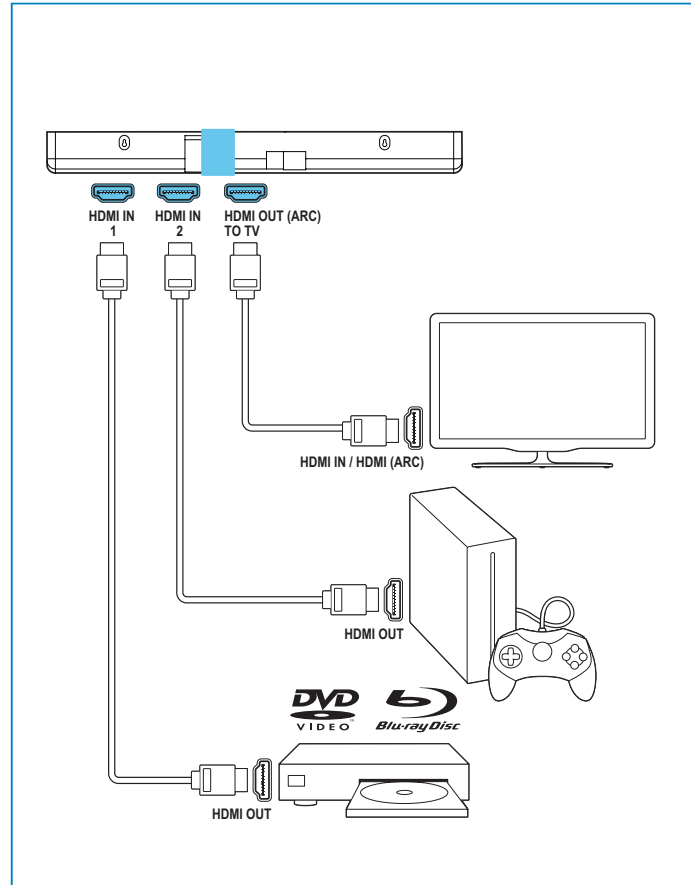




# 4

**EN** Enjoy audio and video from your devices

**ZH-CN** 通过回音壁播放其它设备的  
音频、视频



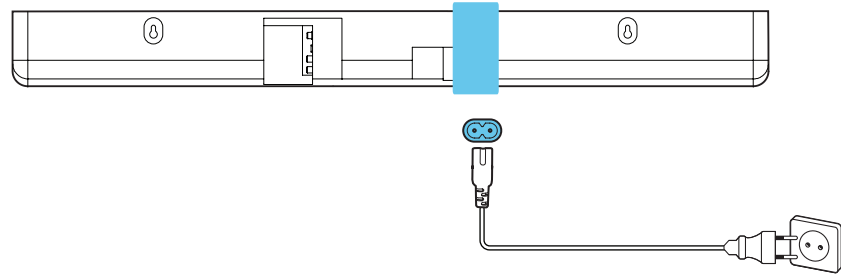


# 5

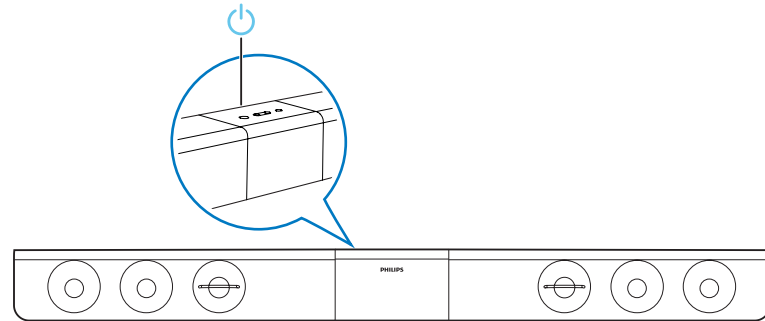
EN Switch on the SoundBar

ZH-CN 开机

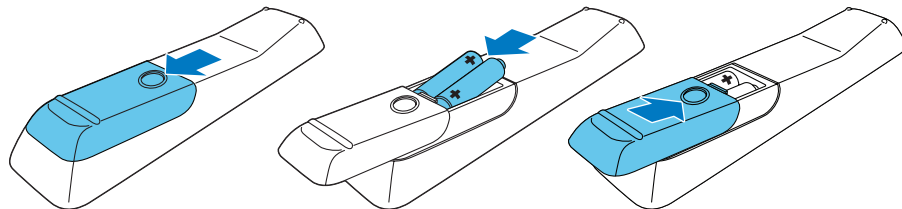
1



2



3



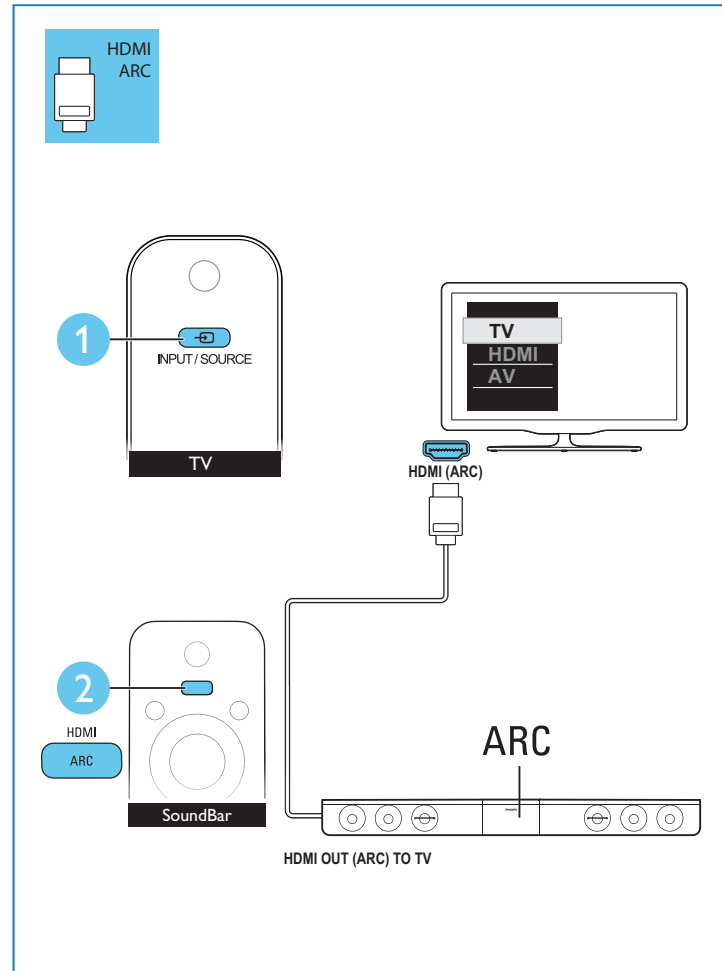


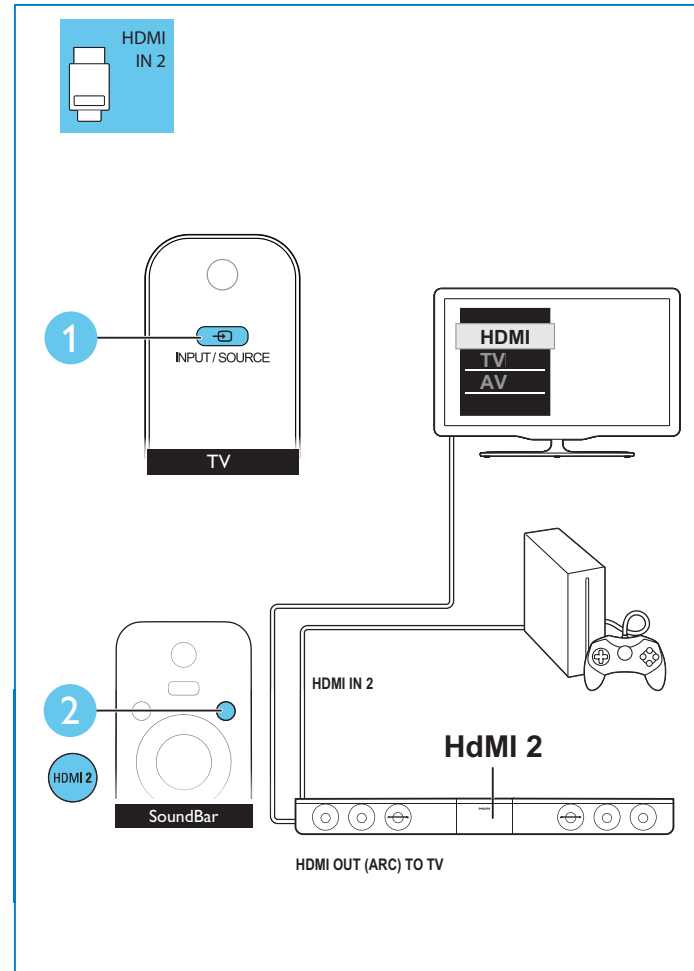
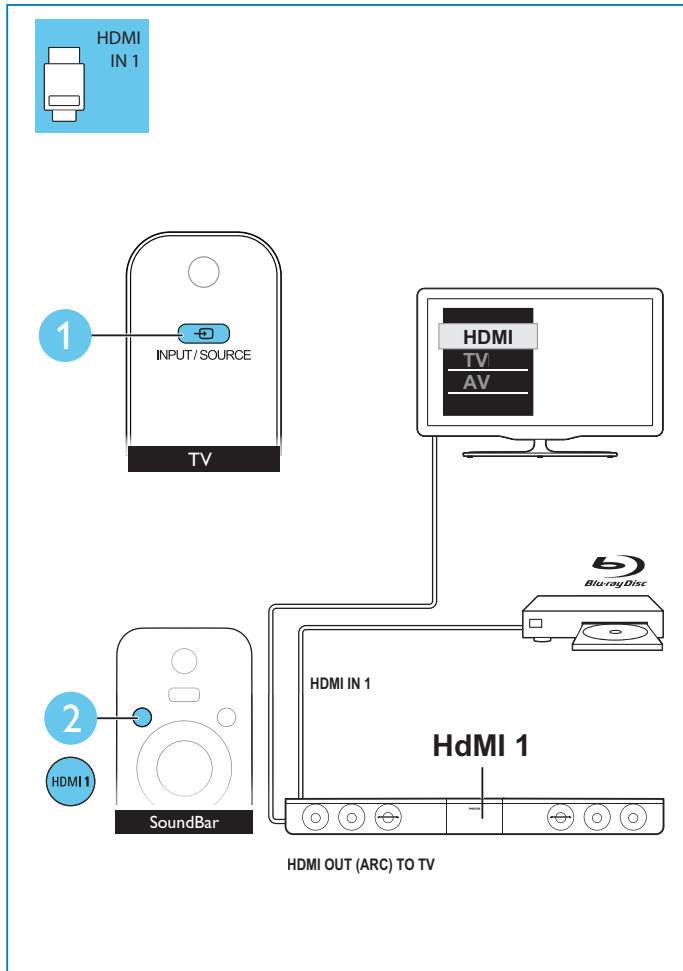


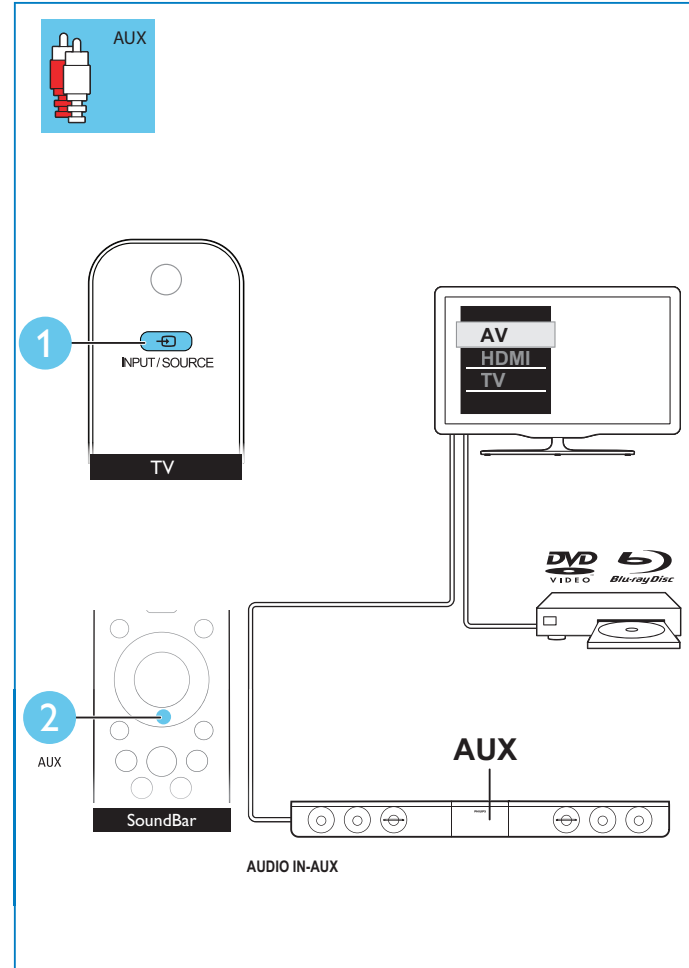
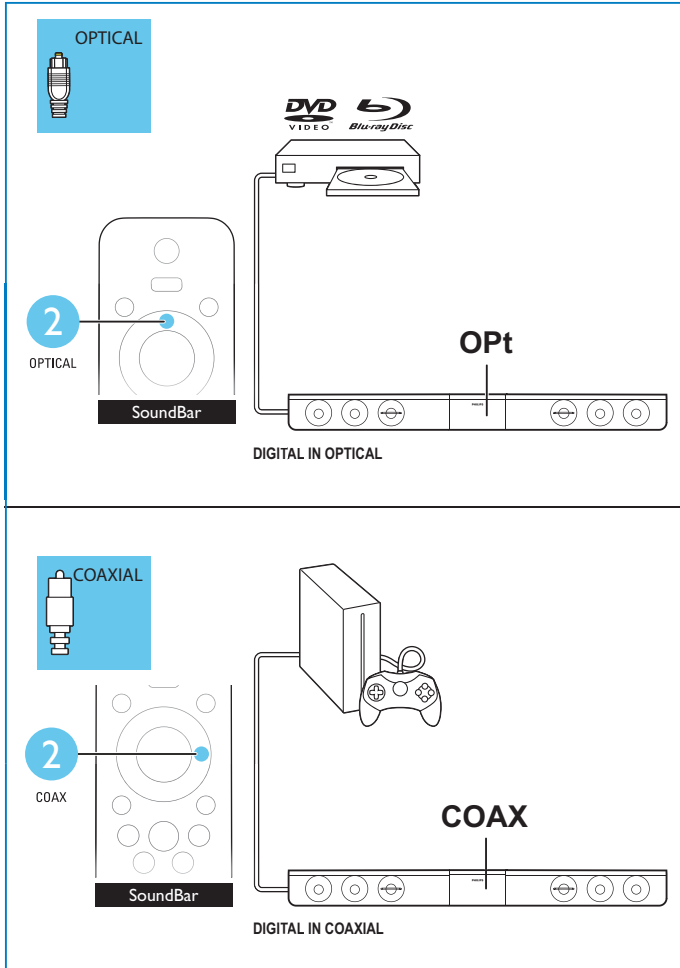
# 6

**EN** Select the correct audio source

**ZH-CN** 选择正确的音频输入源





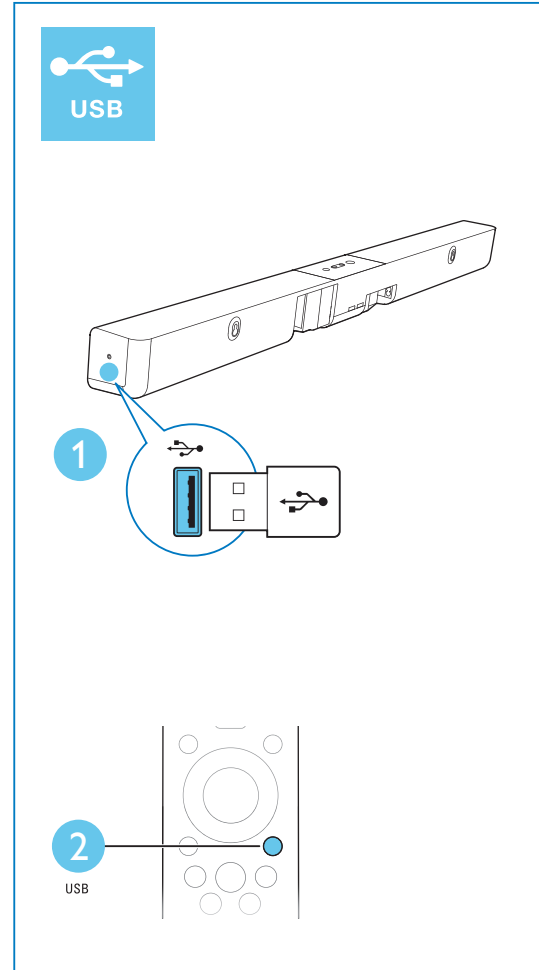
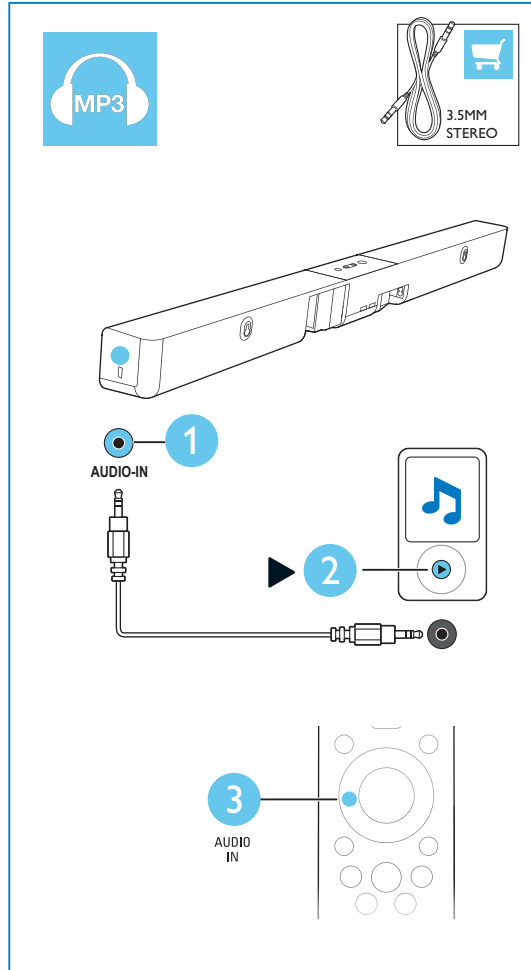




# 7

EN Play other devices

ZH-CN 播放其它设备

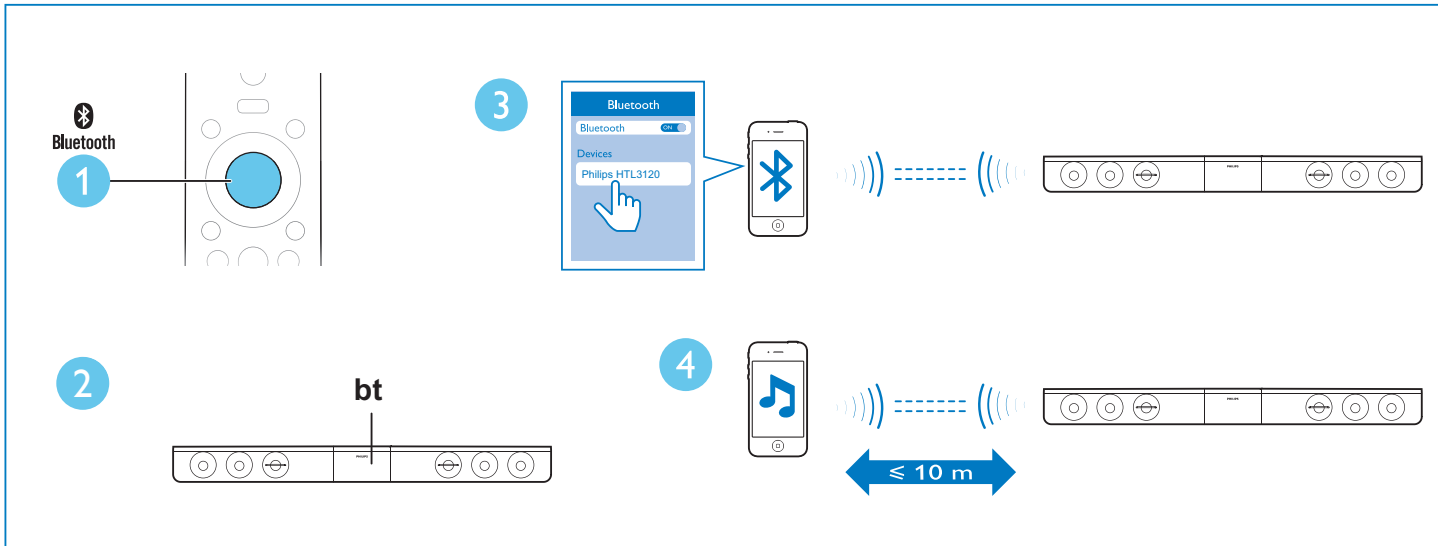




# 8

EN Play audio through Bluetooth

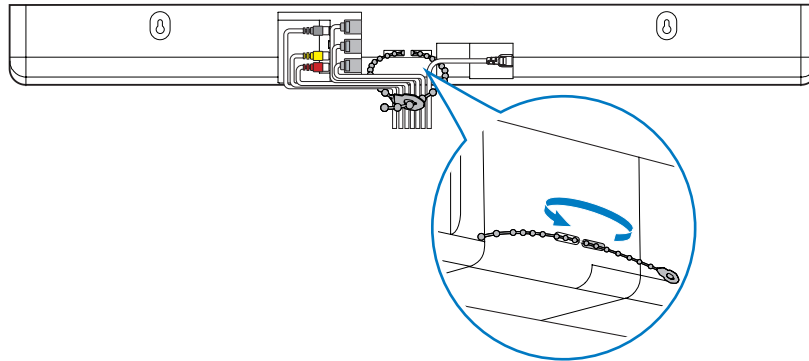
ZH-CN 通过蓝牙播放音频

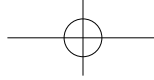




EN Organize the cables

ZH-CN 整理缆线





Manufactured under license under U.S. Patent Nos: 5,956,674; 5,974,380; 6,487,535 & other U.S. and worldwide patents issued & pending. DTS, the Symbol, & DTS and the Symbol together are registered trademarks & DTS Digital Surround and the DTS logos are trademarks of DTS, Inc. Product includes software. © DTS, Inc. All Rights Reserved.



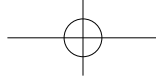
Manufactured under license from Dolby Laboratories. Dolby and the double-D symbol are trademarks of Dolby Laboratories.



The terms HDMI and HDMI High-Definition Multimedia Interface, and the HDMI Logo are trademarks or registered trademarks of HDMI Licensing LLC in the United States and other countries.



The Bluetooth® word mark and logos are registered trademarks owned by Bluetooth SIG, Inc. and any use of such marks by WOOX Innovations is under license. Other trademarks and trade names are those of their respective owners.



**EN** For more information about using this product,  
visit [www.philips.com/support](http://www.philips.com/support)

**ZH-CN** 访问 [www.philips.com/support](http://www.philips.com/support)  
更详尽地了解本产品



2013 © WOOX Innovations Limited. All rights reserved.  
Philips and the Philips' Shield Emblem are registered trademarks  
of Koninklijke Philips N.V. and are used by WOOX Innovations Limited  
under license from Koninklijke Philips N.V.

HTL3120\_93\_QSG\_V2.0



[www.philips.com/support](http://www.philips.com/support)

