

Register your product and get support at  
[www.philips.com/welcome](http://www.philips.com/welcome)

100 SERIES



**Sonicare Airfloss**

# Quick start guide

Kurzanleitung / Guide de mise en route /  
Guida di avvio rapido / Snelstartgids

**Please read chapter 'Important' in the user manual before you use the appliance.**

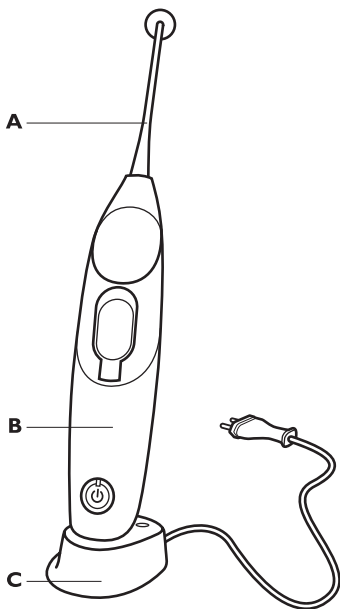
Lesen Sie bitte in der Bedienungsanleitung das Kapitel "Wichtig", bevor Sie das Gerät verwenden.  
Veuillez lire le chapitre « Important » du mode d'emploi avant d'utiliser l'appareil.

Leggete il capitolo 'Importante' nel manuale per l'utente prima di iniziare a utilizzare l'apparecchio.  
Lees hoofdstuk 'Belangrijk' in de gebruiksaanwijzing voordat u het apparaat gebruikt.



# PHILIPS

**CONTENT / INHALT / CONTENU / CONTENUTO / INHOUD**

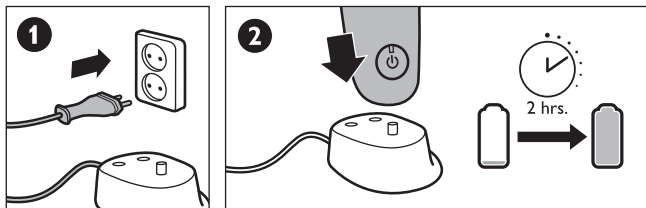


**A** Nozzle  
Düse  
Embout  
Bocchetta  
Spuitmond

**B** Handle  
Handstück  
Poignée  
Impugnatura  
Handvat

**C** Charger  
Ladegerät  
Chargeur  
Caricabatterie  
Oplader

**BEFORE FIRST USE / VOR DEM ERSTEN GEBRAUCH /  
AVANT LA PREMIÈRE UTILISATION / PRIMO UTILIZZO /  
VOOR HET EERSTE GEBRUIK**



Review your user manual for additional instructions

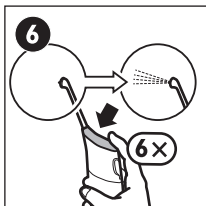
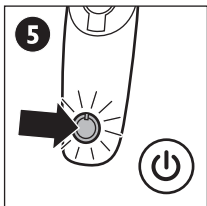
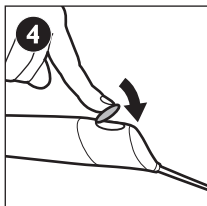
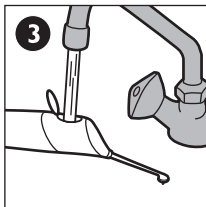
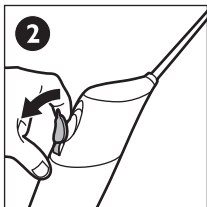
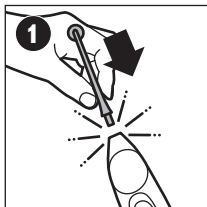
Weitere Informationen finden Sie in der Bedienungsanleitung.

Reportez-vous au mode d'emploi pour de plus amples instructions.

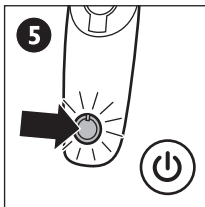
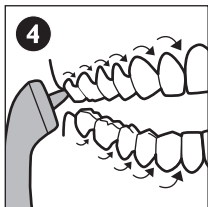
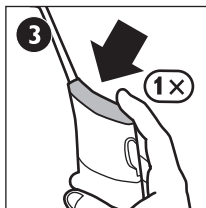
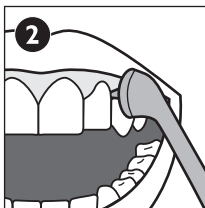
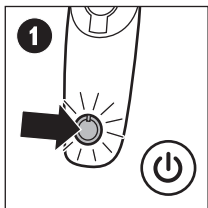
Per ulteriori informazioni, consultate il manuale dell'utente.

Raadpleeg uw gebruiksaanwijzing voor extra instructies.

**PREPARING FOR USE / FÜR DEN GEBRAUCH**  
**VORBEREITEN / AVANT UTILISATION / PREDISPOSIZIONE**  
**DELL'APPARECCHIO / KLAARMAKENVOOR GEBRUIK /**



**USING / DER GEBRAUCH / UTILISATION /  
UTILIZZO / GEBRUIK**





Register your product and get support at  
[www.philips.com/welcome](http://www.philips.com/welcome)  
Quick Start Guide

Produktregistrierung und Support unter  
[www.philips.com/welcome](http://www.philips.com/welcome)  
Kurzanleitung

Enregistrez votre produit et bénéficiez d'une assistance  
sur [www.philips.com/welcome](http://www.philips.com/welcome)  
Guide de mise en route

È possibile registrare il prodotto e richiedere assistenza  
all'indirizzo [www.philips.com/welcome](http://www.philips.com/welcome).  
Guida di avvio rapido

Voor registratie van uw product en ondersteuning  
kunt u terecht op [www.philips.com/welcome](http://www.philips.com/welcome)  
Snelstartgids



[www.philips.com/Sonicare](http://www.philips.com/Sonicare)



100% recycled paper  
100% papier recyclé

4235.020.4865.1