

Register your product and get support at
www.philips.com/welcome

9300 SERIES



Sonicare DiamondClean

Quick start guide

Guía de configuración rápida

Guide de démarrage rapide



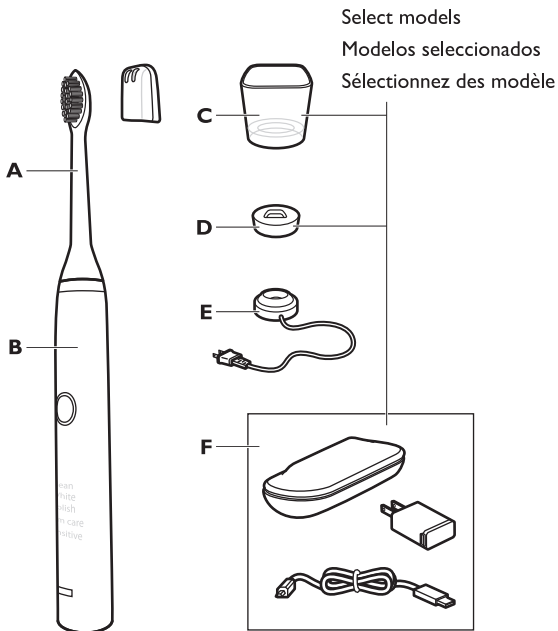
Please refer to the user manual for
IMPORTANT SAFEGUARDS

Consulte el manual del usuario para obtener información sobre las **PRECAUCIONES IMPORTANTES**

Reportez-vous au mode d'emploi pour consulter les **MISES EN GARDE IMPORTANTES**

PHILIPS

CONTENT / CONTENIDO / CONTENU



A
Brush head
Cabezal del cepillo
Tête de brosse

B
Handle
Mango
Poignée

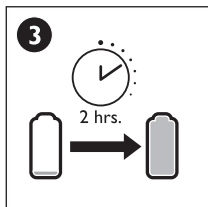
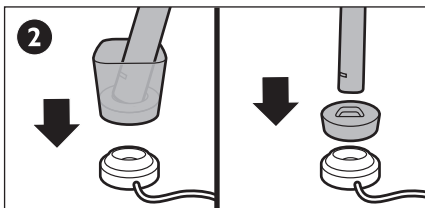
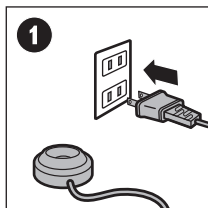
C
Charger glass
Vaso de carga
Verre chargeur

D
Charging stand
Soporte de carga
Socle de recharge

E
Charging base
Base de carga
Base de recharge

F
Charging travel case
Estuche de carga para viaje
Étui de transport de recharge

**BEFORE FIRST USE / ANTES DE UTILIZARLO POR PRIMERA VEZ
/ AVANT LA PREMIÈRE UTILISATION**

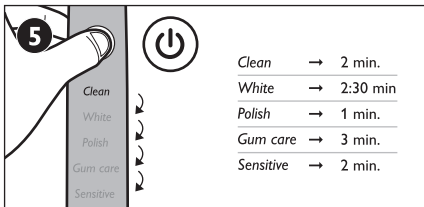
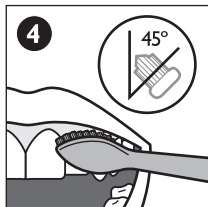
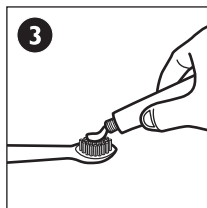
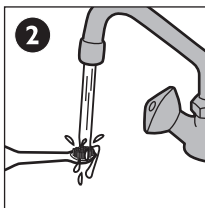
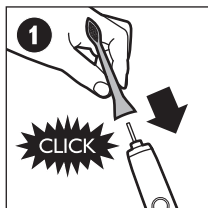


Review your user manual for additional instructions

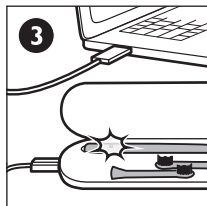
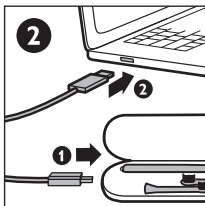
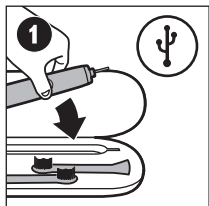
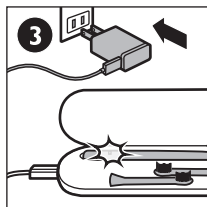
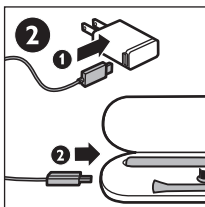
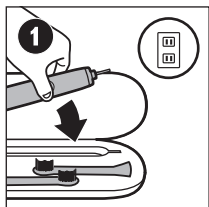
Consulte el manual del usuario para obtener instrucciones adicionales

Reportez-vous au mode d'emploi pour consulter des instructions complémentaires

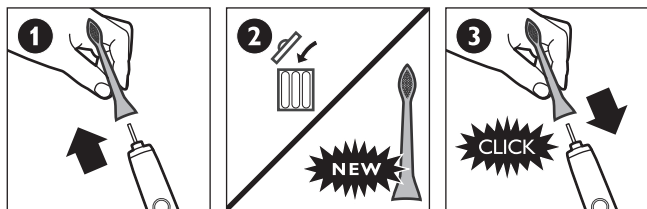
USING / UTILIZACIÓN / UTILISATION



TRAVELING WITH YOUR SONICARE /
DE VIAJE CON SONICARE / VOYAGE



REPLACEMENT BRUSH HEADS /
CABEZALES DEL CEPILLO DE RECAMBIO /
TÊTES DE BROSE DE RECHANGE



Replace brush head every 3 months for optimal results

Sustituya el cabezal cada 3 meses para conseguir unos resultados óptimos

Pour un résultat optimal, remplacez la tête de brosse aux 3 mois



4235.020.4715.1

www.philips.com/Sonicare