

STOP! Think you're choosing Philips? **Need help fast?** Read your Quick Start Guide and/or User Manual first for quick tips that make using your Philips product more enjoyable. If you have read your instructions and still need assistance, you may access our online help at www.philips.com/welcome or call: **1-888-PHILIPS (744-5477)** while with your product. (List Model / Serial number)

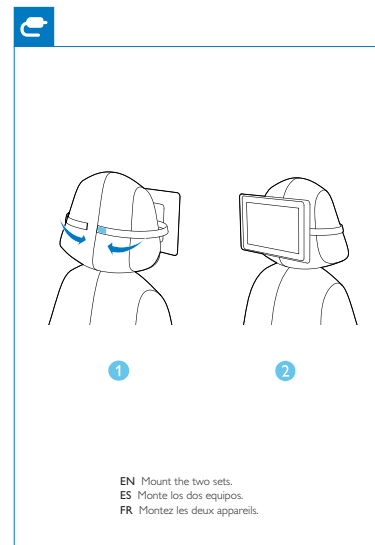
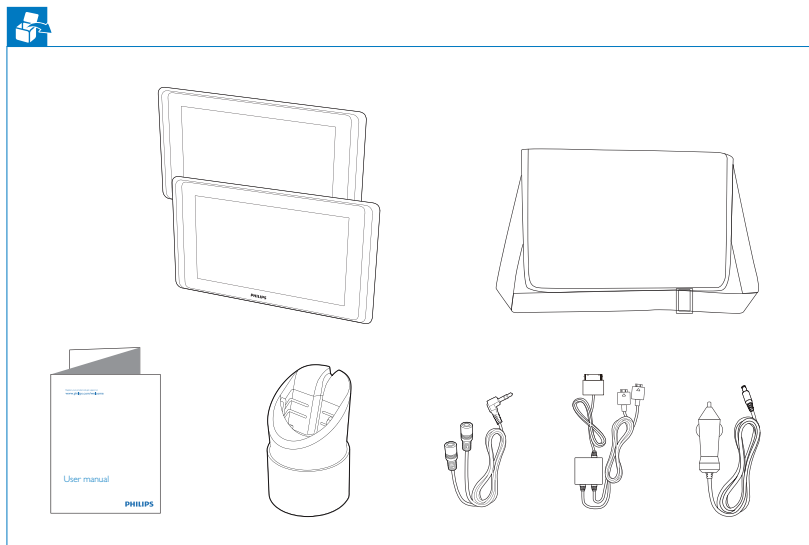
ARRÊT! Pensez-vous choisir Philips? **Besoin d'une aide rapide?** Le Guide rapide de départ et Manuel de l'utilisateur régissent d'urgence des conseils à lire avant l'utilisation de votre produit Philips. Toutefois, si vous ne parvenez pas à résoudre votre problème, vous pouvez accéder à notre aide en ligne à l'adresse www.philips.com/welcome ou appelez le: **1-888-PHILIPS (744-5477)** (Modèle / Numéro de série)

ALTO! ¿Creece por escoger Philips? **Necesita ayuda inmediata!** Lea primero la Guía rápida de consejos o el Manual del usuario, en donde encontrará consejos que le ayudarán a disfrutar plenamente de su producto Philips. Si después de leerlo aún necesita ayuda, consulte nuestro servicio de asistencia en línea en www.philips.com/welcome o llame al teléfono: **1-888-PHILIPS (744-5477)** y tenga a mano el producto, (y número de modelo / serie)

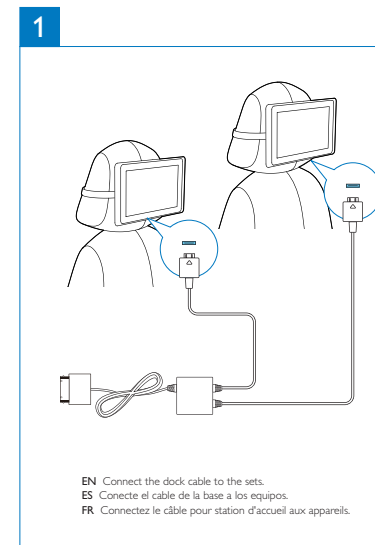


EN User manual
 ES Manual del usuario
 FR Mode d'emploi

iPhone not included
 iPhone non fourni
 iPhone no incluso



EN Mount the two sets.
 ES Monte los dos equipos.
 FR Montez les deux appareils.

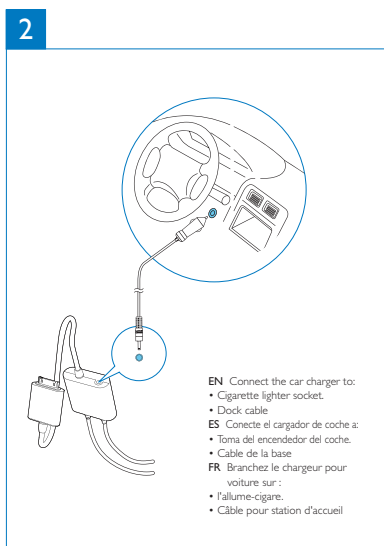


EN Connect the dock cable to the sets.
 ES Conecte el cable de la base a los equipos.
 FR Connectez le câble pour station d'accueil aux appareils.

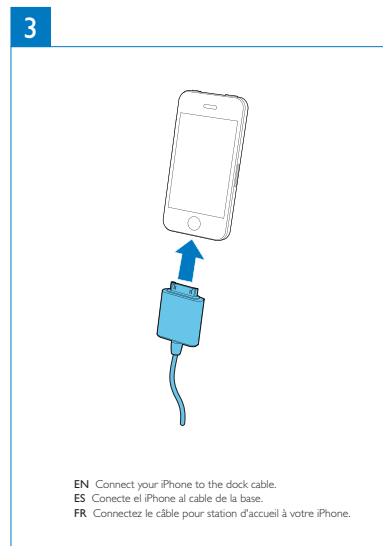
Philips Consumer Lifestyle
 A division of Philips Electronics North America Corporation
 P.O. Box 10313
 Stamford, CT 06904
 Phone: 1-888-PHILIPS (744-5477)

Meet Philips at the Internet
<http://www.philips.com/welcome>

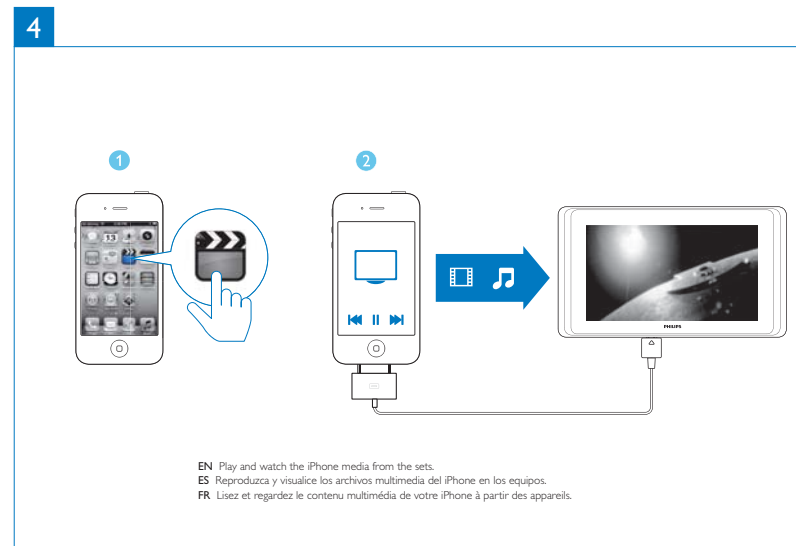
PHILIPS All registered and unregistered trademarks are property of their respective owners.
 © 2012 Koninklijke Philips Electronics N.V.
 All rights reserved.



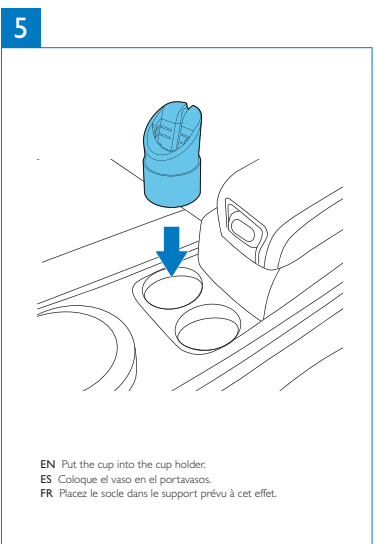
EN Connect the car charger to:
 • Cigarette lighter socket.
 • Dock cable
 ES Conecte el cargador de coche a:
 • Toma del encendedor del coche.
 • Cable de la base
 FR Branchez le chargeur pour voiture sur:
 • l'allume-cigare.
 • Câble pour station d'accueil



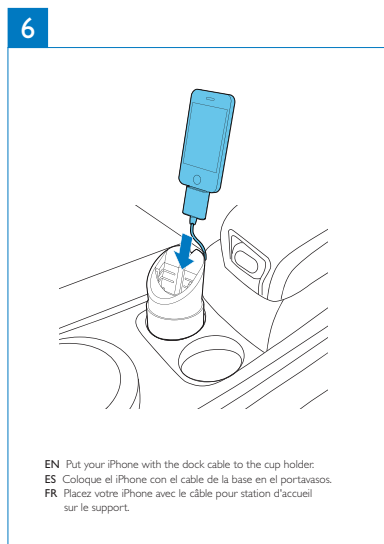
EN Connect your iPhone to the dock cable.
 ES Conecte el iPhone al cable de la base.
 FR Connectez le câble pour station d'accueil à votre iPhone.



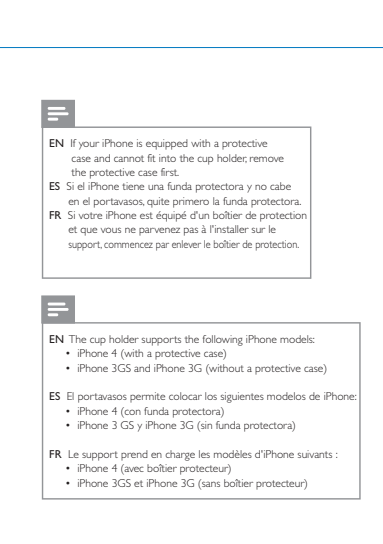
EN Play and watch the iPhone media from the sets.
 ES Reproduzca y visualice los archivos multimedia del iPhone en los equipos.
 FR Lisez et regardez le contenu multimédia de votre iPhone à partir des appareils.



EN Put the cup into the cup holder.
 ES Coloque el vaso en el portavasos.
 FR Placez le socle dans le support prévu à cet effet.

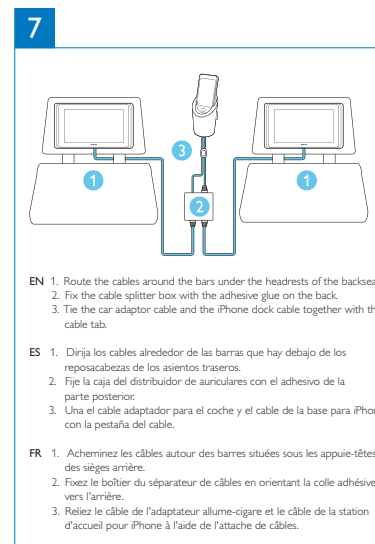


EN Put your iPhone with the dock cable to the cup holder.
 ES Coloque el iPhone con el cable de la base en el portavasos.
 FR Placez votre iPhone avec le câble pour station d'accueil sur le support.

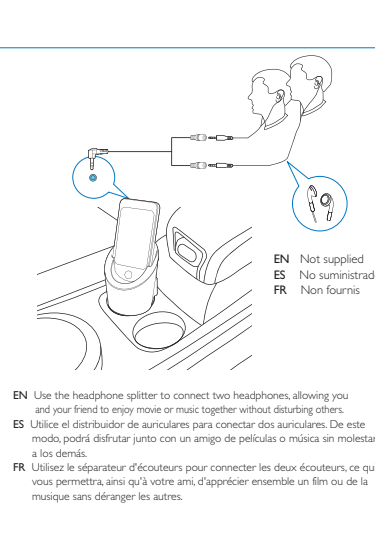


EN If your iPhone is equipped with a protective case and cannot fit into the cup holder, remove the protective case first.
 ES Si el iPhone tiene una funda protectora y no cabe en el portavasos, quite primero la funda protectora.
 FR Si votre iPhone est équipé d'un boîtier de protection et que vous ne parvenez pas à l'installer sur le support, commencez par enlever le boîtier de protection.

EN The cup holder supports the following iPhone models:
 • iPhone 4 (with a protective case)
 • iPhone 3GS and iPhone 3G (without a protective case)
 ES El portavasos permite colocar los siguientes modelos de iPhone:
 • iPhone 4 (con funda protectora)
 • iPhone 3 GS y iPhone 3G (sin funda protectora)
 FR Le support prend en charge les modèles d'iPhone suivants:
 • iPhone 4 (avec boîtier protecteur)
 • iPhone 3GS et iPhone 3G (sans boîtier protecteur)



EN 1. Route the cables around the bars under the headrests of the backseats.
 2. Fix the cable splitter box with the adhesive glue on the back.
 3. Tie the car adaptor cable and the iPhone dock cable together with the cable tab.
 ES 1. Dirija los cables alrededor de las barras que hay debajo de los reposacabezas de los asientos traseros.
 2. Fije la caja del distribuidor de auriculares con el adhesivo de la parte posterior.
 3. Fije la cable adaptador para el coche y el cable de la base para iPhone con la pestaña del cable.
 FR 1. Acheminez les câbles autour des barres situées sous les appuie-têtes des sièges arrière.
 2. Fixez le boîtier du séparateur de câbles en orientant la colle adhésive vers l'arrière.
 3. Relevez le câble de l'adaptateur allume-cigare et le câble de la station d'accueil pour iPhone à l'aide de l'attache de câbles.



EN Use the headphone splitter to connect two headphones, allowing you and your friend to enjoy movie or music together without disturbing others.
 ES Utilice el distribuidor de auriculares para conectar dos auriculares. De este modo, podrá disfrutar junto con un amigo de películas o música sin molestar a los demás.
 FR Utilisez le séparateur d'écouteurs pour connecter les deux écouteurs, ce qui vous permettra, ainsi qu'à votre ami, d'apprécier ensemble un film ou de la musique sans déranger les autres.

EN Not supplied
 ES No suministrado
 FR Non fournis

English

Before using your product, read all accompanying safety information.

Specifications

Amplifier	
Rated Output Power	2 X 0.6 W RMS
Signal to Noise Ratio	> 55 dBA

General information	
Input Power	Car cord 12V
Output Power	12 V ≙ 2 A
Operation Power Consumption	18 W
Standby Power Consumption	<1 W
Max. load for iPod/iPhone/iPad	5 V ≙ 2.1 A
Dimensions	
PV9002i	
- Main Unit (W x H x D)	266 x 152 x 19.3 mm
PV7002i	
- Main Unit (W x H x D)	217.3 x 124.3 x 18.5 mm
Weight	
PV9002i	
- Main Unit	0.435 kg
- With Packing	1.433 kg
PV7002i	
- Main Unit	0.29 kg
- With Packing	1.064 kg

The set does not support the following iPod models: iPod classic, iPod 4G, iPod 5G.

Español

Antes de utilizar el producto, lea toda la información de seguridad que se adjunta.

Especificaciones

Amplificador	
Potencia de salida	2 x 0.6 W RMS
Relación señal/ruído	> 55 dBA

Información general	
Alimentación de entrada	cable del coche de 12 V
Alimentación de salida	12 V ≙ 2 A
Consumo de energía en funcionamiento	18 W
Consumo de energía en modo de espera	< 1 W
Carga máxima para iPod/iPhone/iPad	5 V ≙ 2,1 A
Dimensiones	
PV9002i	
- Unidad principal (ancho x alto x profundo)	266 x 152 x 19,3 mm
Dimensiones	
PV7002i	
- Unidad principal (ancho x alto x profundo)	217,3 x 124,3 x 18,5 mm
Peso	
PV9002i	
- Unidad principal	0,435 kg
- Con embalaje	1,433 kg
PV7002i	
- Unidad principal	0,29 kg
- Con embalaje	1,064 kg

El equipo no es compatible con los siguientes modelos de iPod: iPod classic, iPod 4G, iPod 5G.

Français

Avant d'utiliser votre produit, lisez toutes les informations sur la sécurité fournies.

Spécifications

Amplificateur	
Puissance de sortie nominale	2 x 0,6 W RMS
Rapport signal/bruit	> 55 dBA

Informations générales	
Puissance d'entrée	cordon pour allume-cigares 12 V
Puissance de sortie	12 V ≙ 2 A
Consommation électrique en mode de fonctionnement	18 W
Consommation électrique en mode veille	< 1 W
Charge max. pour iPod/iPhone/iPad	5 V ≙ 2,1 A
Dimensions	
PV9002i	
- Unité principale (l x H x P)	266 x 152 x 19,3 mm
Dimensions	
PV7002i	
- Unité principale (l x H x P)	217,3 x 124,3 x 18,5 mm
Poids	
PV9002i	
- Unité principale	0,435 kg
- Avec emballage	1,433 kg
PV7002i	
- Unité principale	0,29 kg
- Avec emballage	1,064 kg

L'appareil ne prend pas en charge les modèles d'iPod suivants : iPod classic, iPod 4G, iPod 5G.

EN

1 Important

Safety

Know these safety symbols



This 'bolt of lightning' indicates uninsulated material within your unit may cause an electrical shock. For the safety of everyone in your household, please do not remove product covering. The 'exclamation point' calls attention to features for which you should read the enclosed literature closely to prevent operating and maintenance problems.

WARNING: To reduce the risk of fire or electric shock, this apparatus should not be exposed to rain or moisture and objects filled with liquids, such as vases, should not be placed on this apparatus.
 CAUTION: To prevent electric shock, match wide blade of plug to wide slot, fully insert.

Important Safety Instructions

- 1 Read these instructions.
- 2 Keep these instructions.
- 3 Heed all warnings.
- 4 Follow all instructions.
- 5 Do not use this apparatus near water.
- 6 Clean only with dry cloth.
- 7 Do not block any ventilation openings. Install in accordance with the manufacturer's instructions.

- 8 Do not install near any heat sources such as radiators, heat registers, stoves, or other apparatus (including amplifiers) that produce heat.
- 9 Only use attachments/accessories specified by the manufacturer.
- 10 Unplug this apparatus during lightning storms or when unused for long periods of time.
- 11 Refer all servicing to qualified service personnel. Servicing is required when the apparatus has been damaged in any way such as power-supply cord or plug is damaged, liquid has been spilled or objects have fallen into the apparatus, the apparatus has been exposed to rain or moisture, does not operate normally, or has been dropped.
- 12 Apparatus shall not be exposed to dripping or splashing.
- 13 Do not place any sources of danger on the apparatus (e.g. liquid filled objects, lit candles).
- 14 This product may contain lead and mercury. Disposal of these materials may be regulated due to environmental considerations. For disposal or recycling information, please contact your local authorities or the Electronic Industries Alliance: www.eia.org.

Warning

- Never remove the casing of this apparatus.
- Make sure that you always have easy access to the car adaptor plug or adaptor to disconnect the apparatus from the power.

2 Notice

Any changes or modifications made to this device that are not expressly approved by Philips Consumer Lifestyle may void the user's authority to operate the equipment.



"Made for iPod," "Made for iPhone," and "Made for iPad" mean that an electronic accessory has been designed to connect specifically to iPod, iPhone, or iPad, respectively, and has been certified by the developer to meet Apple performance standards. Apple is not responsible for the operation of this device or its compliance with safety and regulatory standards. Please note that the use of this accessory with iPod, iPhone, or iPad may affect wireless performance.

iPod and iPhone are trademarks of Apple Inc., registered in the U.S. and other countries. iPad is a trademark of Apple Inc.

Notice for the USA

