

PHILIPS

NORELCO

Hair Clipper



QC5130

Rechargeable
Cordless/Cord

Register your product and get support at
www.philips.com/norelco

IMPORTANT SAFETY INSTRUCTIONS

When using an electrical appliance, basic safety precautions should always be followed, including the following:

Read all instructions before using this appliance.

DANGER

To reduce the risk of electric shock:

1. Do not reach for a clipper that has fallen into water. Unplug immediately.
2. Use clipper only in dry condition. Do not use while bathing or in a shower.
3. Do not submerge clipper in water.
4. Do not place or store clipper where it can fall or be pulled into a tub or sink. Do not place in or drop into water or other liquid.
5. Always unplug this clipper from the electrical outlet immediately after using, except when clipper is (re)charging.
6. Unplug clipper before cleaning.
7. When discarding clipper, unplug clipper to remove rechargeable battery. See Battery Removal instructions.

WARNING

To reduce the risk of burns, fire, electric shock or injury to persons:

1. Close supervision is necessary when this appliance is used by, on, or near children or invalids.
2. Use this clipper for its intended household use as described in this manual. Do not use attachments not recommended by Philips Electronics North America Corporation.
3. Never operate this clipper if it has a damaged cord or plug, if it is not working properly, if it has been dropped, damaged, or dropped into water. For assistance visit our website www.philips.com/norelco or call 1-800-243-3050.
4. Do not rinse or immerse the clipper handle in water or any other liquid.
5. Keep the clipper, cord and any attachments away from heated surfaces.
6. Never drop or insert any object into any opening.
7. Do not operate, charge or plug in clipper outdoors or where aerosol (spray) products are being used or where oxygen is being administered.
8. Always check cutters, cutting unit and combs before using the clipper. Do not use the clipper if cutters, cutting unit or combs are damaged, as injury may occur.
9. Always attach plug to clipper first, then to outlet. To disconnect, turn on/off switch to "OFF" position, then remove plug from outlet.
10. To prevent possible damage to the cord, do not wrap cord around the clipper.
11. Use only the cord provided to charge and (re)charge clipper.
12. Never put clipper in direct sunlight or store at a temperature above 140°F.
13. This clipper is for use on human hair only. Do not use this clipper for any other purpose.
14. Always store your clipper, attachments and power plug in a moisture-free area. Make sure the cord is disconnected from the clipper.

SAVE THESE INSTRUCTIONS

IMPORTANT: The power plug contains a transformer. Do not cut off the power plug to replace it with another plug as this will cause a hazardous condition.

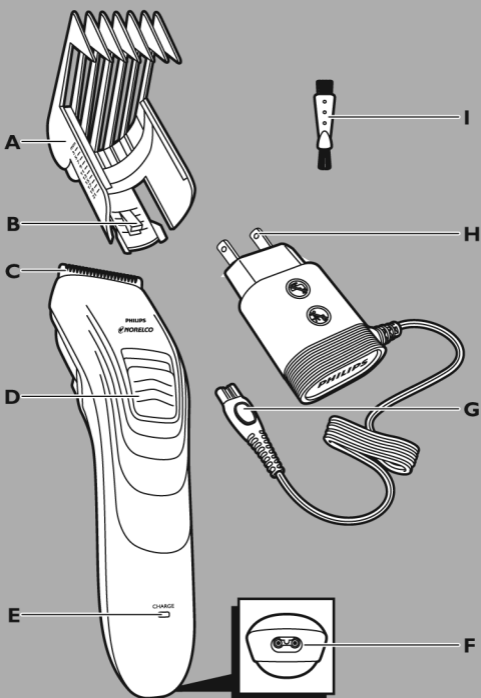
IMPORTANT: Your clipper contains **NICKEL METAL HYDRIDE RECHARGEABLE BATTERIES**. See **Battery Removal instructions for battery disposal information**.

Registration

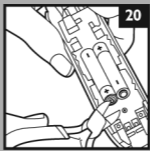
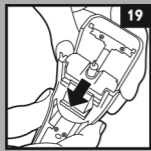
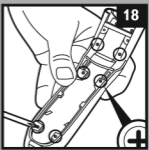
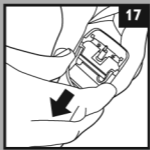
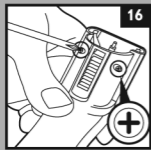
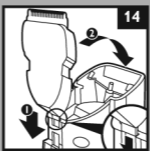
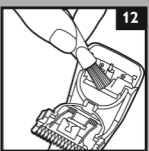
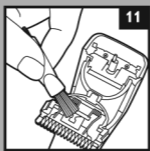
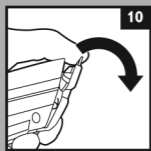
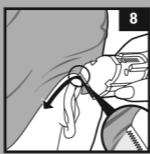
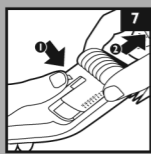
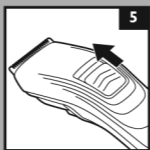
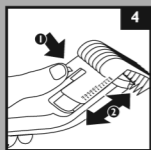
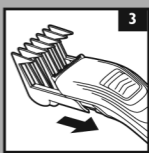
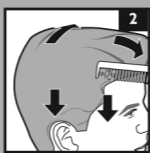
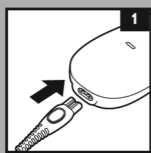
Congratulations on your purchase and welcome to Philips Norelco!

To fully benefit from the support that Philips Norelco offers, register your product at www.philips.com/norelco

Features



- A Hair Clipping Comb
 - B Hair Length Selector
 - C Stainless Steel Cutter Blades
 - D On/Off Slide Switch
 - E Charging Light
 - F Socket for Appliance Plug
 - G Appliance Plug
 - H Adaptor
 - I Cleaning Brush
- Full Two-Year Warranty
45-Day Money-Back Guarantee



Put It To The Test

Like many new products, your Philips Norelco Hair Clipper may take a little getting used to. If you are using an electric Clipper for the first time, or if you've been using a different brand, take the time to acquaint yourself with your new Hair Clipper.

Your Hair Clipper features a strong motor and stainless steel cutter blades to comfortably clip most hair types.

Throw your scissors away and put your new Hair Clipper to the test. We guarantee precise results or Philips Norelco will refund you the full purchase price as long as the request is received within 45 days of purchase.

To Charge/Recharge

- ▶ Fully charge Clipper before using for the first time or after non-use for a long period of time.
- ▶ Battery performance is best if you recharge only when the battery is (almost) completely empty.
- ▶ Charging, recharging or using Clipper at temperatures below 40°F or higher than 95°F adversely affects lifespan of the battery.
- ▶ Continuously recharging Clipper will reduce lifespan of battery.

1 Be certain Clipper is OFF.

2 Insert the appliance plug directly into the Clipper (fig. 1) and plug the adapter into any 120VAC outlet. Use only the cord provided.

3 The Charging Light on the appliance will light to indicate the Clipper is charging.

▶ It will take approximately 10 hours to fully charge the Clipper for a cordless clipping time of up to 40 minutes.

NOTE: After the Clipper is fully charged, the Charging Light will remain lit.

4 Disconnect the cord and unplug from electrical outlet.

Optimize the working life of the battery

- ▶ After the Clipper has been charged for the first time, do not recharge the Clipper between clipping sessions. Continue using it until the battery is completely empty.
- ▶ Do not charge for more than 24 hours.
- ▶ Do not keep cord permanently plugged in.
- ▶ Discharge/run down the battery completely twice a year by letting the motor run until it stops.
- ▶ If the Clipper hasn't been used for a long period of time, it must be recharged for a full 10 hours.

Corded Hair Clipping

- ▶ Only use the Clipper corded when the battery is almost empty.
 - ▶ Clipper does not recharge during corded clipping.
- 1** Connect cord provided to Clipper (fig. 1) and plug Clipper into electrical outlet.
 - 2** If battery is completely empty, wait a few minutes before switching clipper ON.
 - 3** Slide ON/OFF switch ON to begin clipping.
 - 4** When finished clipping, turn Clipper OFF and unplug.

Cordless Hair Clipping

- 1** Charge according to directions. Unplug Clipper from outlet and remove cord.
- 2** Slide ON/OFF switch ON to begin clipping.
- 3** If the charge runs out while clipping, simply connect cord provided to Clipper and outlet to continue clipping.

Hair Clipping

- ▶ Use this Clipper for its intended household use as described in this manual.
- ▶ Make sure that the appliance is fully charged before you start clipping hair.
- ▶ Before you start clipping, make sure that the head of the person whose hair you are cutting is at the same level as your chest so that all parts of his/her head are clearly visible and within easy reach.
- ▶ Only use the appliance on clean, dry hair.
- ▶ Do not use on freshly washed hair.
- ▶ Before you begin, comb the hair in the direction of growth (fig. 2).
- ▶ To achieve optimal clipping results, always move the appliance slowly through the hair against the direction of hair growth.

Clipping with hair clipping comb

- 1** Be certain the Clipper is in the OFF position.
- 2** Slide the hair clipping comb into the guiding grooves on both sides of Clipper and push until you hear it 'click' into place (fig. 3).
Make sure the comb locks properly into position.
- 3** Press the Hair Length Selector (1) and slide it to the desired setting (2) (fig. 4). The Clipper can cut hair up to 10 different lengths.
- 4** The remaining hair length is indicated by the settings on the side of the comb.
When you are clipping for the first time, start at the maximum clipping length setting (7/8 in./21mm) to familiarize yourself with the appliance and prevent accidentally trimming hairs too short. As you become familiar with the settings, adjust the Hair Length Selector to desired trimming length.
- 5** Make sure that the flat part of the comb is always in full contact with the scalp to obtain an even result.
- 6** Since all hairs do not grow in the same direction, move the appliance slowly over the crown from different directions (i.e. upwards, downwards and across) to achieve an even result (fig. 6).
- 7** Always move the appliance against the direction of hair growth.
- 8** Make overlapping passes over the head to ensure that all hair that should be cut has been cut.
- 9** For best results with curly, sparse or long hair, use a styling comb to guide the hair towards the Clipper.
- 10** Turn the Clipper off regularly during clipping and remove the hair clipping comb to blow and/or shake out hair that has accumulated.

► **REMEMBER:** You must reset the hair length selector back to your desired setting every time you replace the hair clipping comb on the appliance.

TIP: Write down the settings you have used to create a certain hairstyle as a reminder for future clipping sessions.

Trimming Length Settings Table

1/8 in.	3mm
3/16 in.	5mm
9/32 in.	7mm
3/8 in.	9mm
7/16 in.	11mm
1/2 in.	13mm
5/8 in.	15mm
21/32 in.	17mm
3/4 in.	19mm
7/8 in.	21mm

Clipping without hair clipping comb

- 1** Remove the hair clipping comb by pressing and sliding the Hair Length Selector upwards (fig. 7).

Be careful when you are clipping without comb attachment as when the Clipper is turned on it will remove every hair it touches.

- 2** To contour the hairline around the ears, comb the hair ends over the ears.
- 3** Tilt the Clipper in such a way that only one edge of the cutter blades touches the hair ends when you shape the contours around the ears (fig. 8).

Only cut the hair ends. The hairline should be close to the ear.

- 4** To contour the nape of the neck or sideburns, turn the Clipper and hold it with the cutter blades pointing downwards (fig. 9).
- 5** Move the Clipper slowly and smoothly following the natural hairline.

Cleaning

- ▶ Clean the attachments after each use.
- ▶ Always switch Clipper OFF, unplug and remove power supply cord from Clipper before cleaning.
- ▶ Do not use compressed air, abrasive cleaning agents, scourers or liquids such as alcohol, benzene, bleach or acetone to clean the Clipper and attachments.
- ▶ Never clean, replace or remove Clipper attachments with motor ON.
- ▶ Never rinse or immerse the Clipper in water or any other liquid.
- ▶ Do not apply pressure to cutters.
- ▶ Do not touch cutters with hard objects as this may damage them.
- ▶ Use a soft, dry cloth to clean Clipper handle.

During Use:

- ▶ If cut hairs have accumulated in the comb area, remove hairs by shaking, blowing or using cleaning brush provided. Remember to adjust the clipping length back to your selected setting when you replace the comb on Clipper.

After Each Use:

- 1** Make sure the Clipper is switched OFF and disconnected from the electrical outlet.
- 2** Remove the hair clipping comb by pressing and sliding the Hair Length Selector upwards (fig. 7).
- 3** Blow and/or shake out any hair that may have accumulated in the hair clipping comb.
- 4** Push the middle part of the cutter blade upwards with your thumb until it opens (fig. 10).
- 5** Clean the cutting unit with the brush supplied (fig. 11).
- 6** Clean the inside of the Clipper with the brush supplied (fig. 12).
- 7** Clean the handle and the adapter with the cleaning brush supplied or with a dry cloth.

NOTE: The Clipper does not need any lubrication.

Replacing the Cutting Unit

If your cutters become damaged or worn, do not continue using the Clipper. Replace cutters immediately.

- 1** Push the middle part of the cutting unit upwards with your thumb until it opens and then pull it off the Clipper (fig. 13).
- 2** Place the notch of the new cutting unit in the slot and push the cutting unit onto the Clipper (fig. 14). You will hear a 'click'.

This Clipper has no other user-serviceable parts. For assistance call 1-800-243-3050.

Assistance

For assistance, call toll free:

1-800-243-3050
or visit our website:
www.philips.com/norelco

Information is available 24 hours a day,
7 days a week.

Storage

- ▶ Be sure Clipper is turned OFF. Remove cord from outlet and Clipper before storing in a safe, dry location where it will not be crushed, banged, or subject to damage.
- ▶ Do not wrap cord around Clipper when storing.
- ▶ Store cord in a safe location where it will not be cut or damaged.
- ▶ Do not place or store Clipper where it can fall or be pulled into a tub or sink, water or other liquid while plugged in.

Battery Removal

- ▶ This Philips Norelco Clipper contains rechargeable Nickel Metal Hydride batteries which must be disposed of properly (fig. 15).
 - ▶ Batteries should only be removed when Clipper is to be discarded.
 - ▶ For assistance, visit our website, www.philips.com/norelco or call toll free: 1-800-243-3050.
- 1** Unplug electrical cord from outlet and Clipper before dismantling Clipper.
 - 2** Allow Clipper to run until the battery is empty/depleted.
 - 3** Turn Clipper OFF.
 - 4** Remove the hair clipping comb and cutting unit from the handle.
 - 5** Use a screwdriver to remove the 2 screws at the back of the handle (fig. 16).
 - 6** Pull the back panel off the Clipper (fig. 17).
 - 7** Remove the 6 screws on the inside of the Clipper with a screwdriver (fig. 18).
 - 8** Separate the power unit from the front panel (fig. 19).
 - 9** Cut the wires close to the batteries (fig. 20).
 - 10** Do not attempt to replace batteries. Insulate battery ends by covering with tape and/or place batteries in a small plastic bag.
 - 11** Discard your Clipper. Do not attempt to plug electrical cord into the outlet or recharge the Clipper after the batteries have been removed.
 - 12** Contact your local town or city officials for battery disposal information or call 1-800-8-BATTERY or www.rbrcc.com for battery drop-off locations.

Full Two-Year Warranty

Philips Electronics North America Corporation warrants each new Philips Norelco product, Model QC5130 (except cutters and comb) against defects in materials or workmanship for a period of two years from the date of purchase, and agrees to repair or replace any defective product without charge.

IMPORTANT: This warranty does not cover damage resulting from accident, misuse or abuse, lack of reasonable care, the affixing of any attachment not provided with the product or loss of parts or subjecting the product to any but the specific voltage.* Use of unauthorized replacement parts will void this warranty.

PHILIPS ELECTRONICS NORTH AMERICA CORPORATION WILL NOT PAY FOR WARRANTY SERVICE PERFORMED BY A NON-AUTHORIZED REPAIR SERVICE AND WILL NOT REIMBURSE THE CONSUMER FOR DAMAGE RESULTING FROM WARRANTY SERVICE PERFORMED BY A NON-AUTHORIZED REPAIR SERVICE.

NO RESPONSIBILITY IS ASSUMED FOR ANY SPECIAL, INCIDENTAL OR CONSEQUENTIAL DAMAGES.

In order to obtain warranty service, simply go to www.philips.com/norelco or call 1-800-243-3050 for assistance. It is suggested that for your protection you return shipments of product by insured mail, insurance prepaid. Damage occurring during shipment is not covered by this warranty. **NOTE:** No other warranty, written or oral, is authorized by Philips Electronics North America Corporation. This warranty gives you specific legal rights, and you may also have other rights which vary from state to state. Some states do not allow the exclusion or limitation of incidental or consequential damages, so the above exclusion and limitations may not apply to you.

*Read enclosed instructions carefully.

Manufactured for:

Philips Consumer Lifestyle

A Division of Philips Electronics North America Corporation

P.O. Box 10313, Stamford, CT 06904



This symbol on the product's nameplate means it is listed by Underwriters' Laboratories, Inc.

Norelco is a Registered Trademark of Philips Electronics North America Corporation.

PHILIPS is a Registered Trademark of Koninklijke Philips Electronics N.V.

© 2010 Philips Electronics North America Corporation. All Rights Reserved.

PHILIPS

NORELCO

45-DAY MONEY-BACK GUARANTEE

If you are not fully satisfied with your Philips Norelco Hair Clipper, send the product back along with dated sales receipt and we'll refund you the full purchase price.

The Clipper must be shipped prepaid by insured mail, insurance prepaid, and have the original sales receipt, indicating purchase price and the date of purchase, enclosed.

We cannot be responsible for lost mail.

The Clipper must be postmarked no later than 45 days after the date of purchase.

Philips Norelco reserves the right to verify the purchase price of the Clipper and limit refunds not to exceed suggested retail price.

To obtain Money-Back Guarantee Return Authorization Form, call 1-800-243-3050 for assistance. Please allow 4-6 weeks for delivery of check.