

**PHILIPS**

***NORELCO***

Do-it-yourself  
Hair Clipper



**QC5510**

Rechargeable  
Corded

Register your product and get support at  
[www.philips.com/norelco](http://www.philips.com/norelco)

# **IMPORTANT SAFETY INSTRUCTIONS**

When using an electrical appliance, basic safety precautions should always be followed, including the following:

**Read all instructions before using this appliance.**

## **DANGER**

**To reduce the risk of electric shock:**

1. Do not reach for a corded clipper that has fallen into water. Unplug immediately.
2. Do not use while bathing or in a shower.
3. Do not place or store clipper where it can fall or be pulled into a tub or sink. Do not place in or drop into water or other liquid.
4. Always unplug this clipper from the electrical outlet immediately after using.
5. Unplug and remove power supply cord from clipper before cleaning.

## **WARNING**

**To reduce the risk of burns, fire, electric shock or injury to persons:**

1. Close supervision is necessary when this appliance is used by, on, or near children or invalids.
2. Use this clipper for its intended household use as described in this manual. Do not use attachments not recommended by Philips Electronics North America Corporation.
3. Never operate this clipper if it has a damaged cord or plug, if it is not working properly, if it has been dropped, damaged, or dropped into water. For assistance call 1-800-243-3050.
4. Do not rinse or immerse the clipper in water or any other liquid.
5. Keep the clipper, cord and any attachments away from heated surfaces.
6. Never drop or insert any object into any opening.
7. Do not operate or plug in clipper outdoors or where aerosol (spray) products are being used or where oxygen is being administered.
8. Always check cutters, cutting unit and combs before using the clipper. Do not use the clipper if cutters, cutting unit or combs are damaged, as injury may occur.
9. Always attach plug to clipper first, then to outlet. To disconnect, turn on/off switch to "OFF" position, then remove plug from outlet.
10. To prevent possible damage to the cord, do not wrap cord around the clipper.
11. Never put clipper in direct sunlight or store at a temperature above 140°F.
12. This clipper is for use on human hair only. Do not use this clipper for any other purpose.
13. Always store your clipper, attachments and power plug in a moisture-free area. Make sure the cord is disconnected from the clipper.
14. Only use the power plug supplied with the appliance.

# **SAVE THESE INSTRUCTIONS**

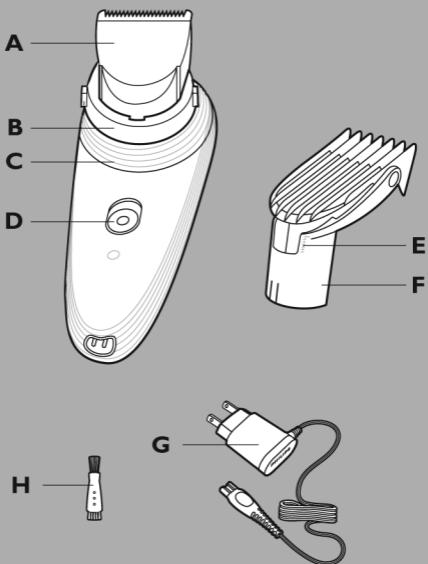
**IMPORTANT: The power plug contains a transformer. Do not cut off the power plug to replace it with another plug as this will cause a hazardous condition.**

### **Registration**

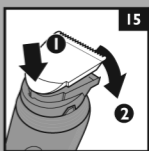
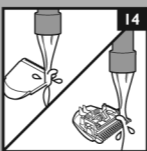
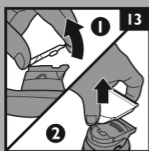
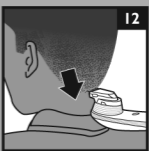
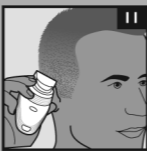
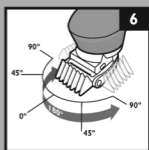
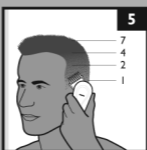
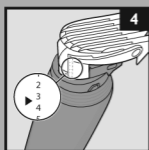
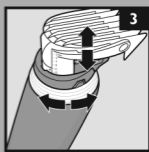
Congratulations on your purchase and welcome to Philips Norelco!

To fully benefit from the support that Philips Norelco offers, register your product at [www.philips.com/norelco](http://www.philips.com/norelco)

# Features



- A Cutting Element
  - B Swivel Head
  - C Hair Length Setting Adjustment Ring
  - D ON/OFF Switch
  - E Hair Length Setting Indicator
  - F Comb Attachment
  - G Adapter
  - H Cleaning Brush
- Full Two-Year Warranty  
45-Day Money-Back Guarantee



## Put It To The Test

Like many new products, your Philips Norelco Hair Clipper may take a little getting used to. If you are using an electric Clipper for the first time, or if you've been using a different brand, take the time to acquaint yourself with your new Hair Clipper.

Your Hair Clipper features a 180° pivoting head to comfortably clip even hard-to-reach areas of your head.

Throw your scissors away and put your new Hair Clipper to the test. We guarantee precise, professional results or Philips Norelco will refund you the full purchase price as long as the request is received within 45 days of purchase.

## Hair Clipping

- ▶ Use this Clipper for its intended household use as described in this manual.
- ▶ Use and store the Clipper at a temperature between 40°F and 95°F.
- ▶ If the appliance is subjected to a major change in temperature, pressure or humidity, let the Clipper acclimatize for 30 minutes before using.
- ▶ If you are clipping someone else's hair, make sure that the head of the person is at the same level as your chest so that all parts of his/her head are clearly visible and within easy reach.
- ▶ Only use the appliance on clean, dry hair.
- ▶ Do not use on freshly washed hair.
- ▶ Before you begin, comb the hair in the direction of growth (fig. 1).
- ▶ To achieve optimal clipping results, always move the appliance slowly through the hair against the direction of hair growth.

### Clipping with comb attachment

---

- 1** Be certain the Clipper is in the OFF position.
- 2** Insert the appliance plug directly into the Clipper and plug the adapter into any 120V AC outlet. Use only the cord provided.
- 3** Slide the comb into the guiding grooves on both sides of the Clipper swivel head and push until you hear it 'click' into place (fig. 2). Make sure the comb attachment locks properly into position.
- 4** Turn the Hair Length Setting Adjustment Ring to set the comb to the desired setting (fig. 3) as indicated on the comb (fig. 4). See Table 1 for settings.

Do not turn the length setting adjustment ring beyond the highest hair length setting.

- 5** The arrowhead on the Clipper indicates which setting has been selected.

When you are clipping for the first time, start at the maximum clipping length setting (#5) of the comb to familiarize yourself with the appliance and prevent accidentally trimming hairs too short. As you become familiar with the settings, adjust the Hair Length Selector to desired trimming length.

*TIP: Use different settings to create a natural and smooth transition between various hair lengths from your neckline to the top of your head (fig. 5).*

## Using the swivel head

▶ At the starting clipping position of  $0^{\circ}$  (pointing forward), turn the swivel head  $45^{\circ}$  or  $90^{\circ}$  to the left or right to adjust the position of the cutting element to the part of your head you are clipping (fig. 6).

**1** Turn the swivel head left or right to the desired clipping position. At each position you will hear a 'click' (fig. 7).

Always adjust the position of the cutting element by turning the swivel head. Do not turn the swivel head by holding the cutting element or the comb attachment.

**2** The swivel head allows you to hold and use the Clipper like a styling comb (fig. 8).

Do not turn the swivel head more than  $90^{\circ}$  to the left or right.

**3** Push the ON/OFF switch up to turn on the appliance.

**4** Make sure that the flat part of the comb is always in full contact with the scalp to obtain an even result.

**5** Since all hairs do not grow in the same direction, move the Clipper slowly over the crown from different directions (i.e. upwards, downwards and across) to achieve an even result (fig. 9).

**6** Always move the Clipper slowly against the direction of hair growth.

**7** Make overlapping passes over the head to ensure that all hairs that should be cut are cut.

**8** As you clip different areas of your head, adjust the position of the swivel head so that the swivel head position is most comfortable for you.

**9** For best results with curly, sparse or long hair, use a styling comb to guide the hair towards the Clipper.

**10** Turn the Clipper off regularly during clipping and remove the hair comb to blow and/or shake out hair that has accumulated.

When you remove the comb, the selected setting does not change.

*TIP: Write down the settings you have used to create a certain hairstyle as a reminder for future clipping sessions.*

**Table 1 Comb Settings**

Comb Barber Setting	Remaining Hair Length
#1	1/8 in./3mm
•	3/16 in./5mm
#2	9/32 in./7mm
#3	3/8 in./9mm
•	7/16 in./11mm
#4	1/2 in./13mm
#5	5/8 in./15mm

## Contouring without a comb attachment

---

- ▶ Use the Clipper without a comb attachment to clip very close to the skin (3/64 in/1mm).
- ▶ Be careful when you are clipping without a comb as when the Clipper is turned on it will remove every hair it touches.
  
- 1** Remove the comb by pulling it off the swivel head (fig. 10).  
Never pull at the flexible top of the comb. Always pull at the bottom part.
  
- 2** To contour the hairline around the ears, comb the hair ends over the ears.
  
- 3** Push the ON/OFF switch up to turn on the appliance.
  
- 4** To contour around the ears, tilt the Clipper in such a way that only one edge of the cutting element touches the hair ends. Only cut the hair ends. The hairline should be close to the ear (fig. 11).
  
- 5** To contour the neckline and the sideburns, turn the Clipper and make downward strokes (fig. 12).  
NOTE: Move the Clipper slowly and smoothly. Simply follow the natural hairline.
  
- 6** Adjust the position of the swivel head to make contouring easier.

## Cleaning

- ▶ Clean the Clipper after each use.
- ▶ Always switch Clipper OFF, unplug and remove power supply cord from Clipper before cleaning.
- ▶ Do not use compressed air, abrasive cleaning agents, scourers or aggressive liquids such as gasoline, acetone or ethereal oils to clean the Clipper and attachments.
- ▶ Never clean, replace or remove Clipper attachments with motor ON.
- ▶ Do not use Clipper if cutter or cutting element are damaged or broken as injury may occur.
- ▶ Use a soft, dry cloth to clean Clipper handle.

## During Use:

---

- ▶ If cut hairs have accumulated in the comb area, remove hairs by shaking, blowing or using cleaning brush provided.

## **Cleaning the Cutting Element and Comb After Each Use:**

---

- 1** Make sure the Clipper is switched OFF and disconnected from the electrical outlet.
- 2** Remove any comb attachment (fig. 10).
- 3** Blow and/or shake out any hair that may have accumulated in the comb.
- 4** Rinse the comb under the tap or clean it with the cleaning brush supplied.
- 5** Put your thumb on the center of the cutting element and put your index finger on the teeth of the cutting element. Lift your index finger (1) so the cutting element releases from the swivel head (2) (fig. 13).

Be careful that the cutting element does not fall to the floor.

- 6** Clean the cutting element under the tap or with the brush supplied (fig. 14).  
Make sure the cutting element is thoroughly dry before reattaching to Clipper.

- 7** Clean the inside of the swivel head with the brush supplied.
- 8** Clean the handle and the adapter with the cleaning brush supplied or with a dry cloth.
- 9** Insert the notch of the cutting element into the slot on the swivel head and push until the cutting element 'clicks' into place (fig. 15).

This Clipper has no other user-serviceable parts. For assistance call 1-800-243-3050.

### **Assistance**

For assistance, visit our website:

**[www.philips.com/support](http://www.philips.com/support) or  
call toll free: 1-800-243-3050**

Information is available 24 hours a day, 7 days a week.

### **Storage**

- ▶ Be sure Clipper is turned OFF. Remove cord from outlet and Clipper before storing in a safe, dry location where it will not be crushed, banged, or subject to damage.
- ▶ Do not wrap cord around Clipper when storing.
- ▶ Store cord in a safe location where it will not be cut or damaged.
- ▶ Do not place or store Clipper where it can fall or be pulled into a tub or sink, water or other liquid while plugged in.

## Full Two-Year Warranty

Philips Electronics North America Corporation warrants each new Philips Norelco product, Model QC5510 (except cutter and comb) against defects in materials or workmanship for a period of two years from the date of purchase, and agrees to repair or replace any defective product without charge.

**IMPORTANT:** This warranty does not cover damage resulting from accident, misuse or abuse, lack of reasonable care, the affixing of any attachment not provided with the product or loss of parts or subjecting the product to any but the specific voltage.\* Use of unauthorized replacement parts will void this warranty.

**PHILIPS ELECTRONICS NORTH AMERICA CORPORATION WILL NOT PAY FOR WARRANTY SERVICE PERFORMED BY A NON-AUTHORIZED REPAIR SERVICE AND WILL NOT REIMBURSE THE CONSUMER FOR DAMAGE RESULTING FROM WARRANTY SERVICE PERFORMED BY A NON-AUTHORIZED REPAIR SERVICE.**

**NO RESPONSIBILITY IS ASSUMED FOR ANY SPECIAL, INCIDENTAL OR CONSEQUENTIAL DAMAGES.**

In order to obtain warranty service, simply go to [www.philips.com/norelco](http://www.philips.com/norelco) or call 1-800-243-3050 for assistance. It is suggested that for your protection you return shipments of product by insured mail, insurance prepaid. Damage occurring during shipment is not covered by this warranty. **NOTE:** No other warranty, written or oral, is authorized by Philips Electronics North America Corporation. This warranty gives you specific legal rights, and you may also have other rights which vary from state to state. Some states do not allow the exclusion or limitation of incidental or consequential damages, so the above exclusion and limitations may not apply to you.

\*Read enclosed instructions carefully.

Manufactured for:

Philips Consumer Lifestyle

A Division of Philips Electronics North America Corporation

P.O. Box 10313, Stamford, CT 06904



This symbol on the product's nameplate means it is listed by Underwriters' Laboratories, Inc.

Norelco is a Registered Trademark of Philips Electronics North America Corporation.

PHILIPS is a Registered Trademark of Koninklijke Philips Electronics N.V.

© 2011 Philips Electronics North America Corporation. All Rights Reserved.

# PHILIPS

# NORELCO

## 45-DAY MONEY-BACK GUARANTEE

If you are not fully satisfied with your Philips Norelco Hair Clipper, send the product back along with dated sales receipt and we'll refund you the full purchase price.

***The Clipper must be shipped prepaid by insured mail, insurance prepaid, and have the original sales receipt, indicating purchase price and the date of purchase, enclosed. We cannot be responsible for lost mail. The Clipper must be postmarked no later than 45 days after the date of purchase. Philips Norelco reserves the right to verify the purchase price of the Clipper and limit refunds not to exceed suggested retail price.***

To obtain Money-Back Guarantee Return Authorization Form, call 1-800-243-3050 for assistance. Please allow 4-6 weeks for delivery of check.