

PHILIPS

NORELCO

***Vacuum
Stubble
and Beard
Trimmer***



QT4070

**Rechargeable
Cord/Cordless**

Register your product and get support at
www.norelco.com/register

IMPORTANT SAFETY INSTRUCTIONS

When using an electrical appliance, basic safety precautions should always be followed, including the following:

Read all instructions before using this appliance.

DANGER

To reduce the risk of electric shock:

1. Do not reach for a Trimmer that has fallen into water. Unplug immediately.
2. Do not use while bathing or in a shower.
3. Do not place or store Trimmer where it can fall or be pulled into a tub or sink. Do not place in or drop into water or other liquid.
4. Always unplug this Trimmer from the electrical outlet immediately after using, except when Trimmer is (re)charging.
5. Unplug Trimmer before cleaning.
6. For connection to a supply not in the U.S.A., use an attachment plug adaptor of the proper configuration for the power outlet.
7. When discarding Trimmer, unplug Trimmer to remove rechargeable battery. See Battery Removal instructions.
8. The batteries used in this device may present a fire or chemical burn hazard if mistreated. Do not disassemble, heat above 100°C (212°F) or incinerate.

WARNING

To reduce the risk of burns, fire, electric shock or injury to persons:

1. Close supervision is necessary when this appliance is used by, on, or near children or invalids.
2. Use this Trimmer for its intended household use as described in this manual. Do not use attachments not recommended by the Philips Electronics North America Corporation.
3. Never operate this Trimmer if it has a damaged cord or plug, if it is not working properly, if it has been dropped, damaged, or dropped into water. For assistance call 1-800-243-3050.
4. Keep the Trimmer and cord away from heated surfaces.
5. Never drop or insert any object into any opening. Keep air openings free of lint, hair, etc.
6. Do not operate, charge or plug in Trimmer outdoors or where aerosol (spray) products are being used or where oxygen is being administered.
7. Do not use this Trimmer with a damaged or broken cutter or trimming comb, as facial injury may occur.
8. Do not operate Trimmer with the hair collection chamber cover opened.
9. Always attach plug to Trimmer first, then into outlet. To disconnect, turn ON/OFF switch "OFF" then remove plug from outlet.
10. To prevent possible damage to the cord, do not wrap cord around the Trimmer.
11. Never put Trimmer in direct sunlight or store at a temperature above 140°F.
12. This Trimmer is for use on human facial hair only. Do not use this Trimmer for any other purpose.
13. Only use the power plug supplied with the appliance.

SAVE THESE INSTRUCTIONS

IMPORTANT: The power plug contains a transformer. Do not cut off the power plug to replace it with another plug as this will cause a hazardous condition.

IMPORTANT: YOUR TRIMMER CONTAINS A LITHIUM-ION RECHARGEABLE BATTERY.

See Battery Removal instructions.

Registration

Congratulations on your purchase and welcome to Philips Norelco!

To fully benefit from the support that Philips Norelco offers, register your product at www.norelco.com/register

Charging

Charge the Trimmer fully before you start using it for the first time or after a long period of non-use.

Charge Indications

Low Battery

- ▶ When the battery is almost empty (approximately 7 or fewer trimming minutes left), the bottom segment of the charge level indicator turns orange.
- ▶ When you turn off the Trimmer, the bottom segment blinks for a few seconds.

Charging

- ▶ When you start charging, the bottom segment of the charge level indicator blinks orange.
- ▶ As charging continues, the bottom segment of the charge level indicator blinks blue, then the second segment and so on, until the Trimmer is fully charged (fig. 1).
- ▶ When the battery contains enough power for one trimming session of approximately 7 minutes, the bottom segment starts blinking blue.
- ▶ When the battery is fully charged, all segments of the charge level indicator light up blue continuously.

To Charge / Recharge

- ▶ (Re)charging requires approximately 60 minutes.
 - ▶ Use only the cord provided.
 - ▶ Charging, recharging or using the Trimmer at temperatures below 40°F or higher than 95°F adversely affects lifetime of battery.
 - ▶ You may also trim using the cord provided. This Trimmer will not recharge while being used corded.
 - ▶ If Trimmer hasn't been used for a long period of time, Trimmer must be recharged for approximately 60 minutes.
- 1** Be certain Trimmer is OFF.
 - 2** Connect cord to Trimmer (fig. 2). Plug into any 120V AC outlet only. Use only the cord provided.
 - ▶ An adaptor plug may be necessary for cord usage in some foreign countries. Use an attachment plug adaptor of the proper configuration for power outlet.
 - ▶ It requires approximately 60 minutes to fully charge the battery, if the battery capacity is completely empty. If there is still battery capacity available, fully charging the battery will take less time.
 - ▶ A fully charged Trimmer has a cordless trimming time of up to 50 minutes under normal operation. Turbo Power operation has a cordless trimming time of up to 35 minutes.
 - 3** Disconnect the cord and unplug from electrical outlet, unless you are using the Trimmer corded.

NOTE: If the fully charged Trimmer is still connected to the outlet after 1 hour, the segments of the charge level indicator goes off.

Cordless Trimming

- 1 Charge according to directions. Unplug Trimmer from outlet and remove cord.
- 2 Turn Trimmer ON to begin trimming (fig. 3).
- 3 If the charge runs out while trimming, simply connect cord provided to Trimmer and outlet to continue trimming.

Corded Trimming

- 1 Connect cord provided to Trimmer.
- 2 Plug Trimmer into electrical outlet.
- 3 If battery is completely empty, wait a few minutes before switching Trimmer on.
- 4 Turn Trimmer ON to begin trimming (fig. 3).
- 5 Turn Trimmer OFF and unplug.

NOTE: Trimmer does not recharge during corded trimming.

Features

- A Detachable Cutting Unit
 - B Hair Collection Chamber Lid
 - C Hair Collection Chamber and Filter
 - D Precision Zoom Lock Hair Length Selector
 - E Hair Length Indicator
 - F Charge Level Indicator
 - G Travel Lock Indicator
 - H ON/Off Button
 - I Turbo Button
 - J Appliance Plug Socket
 - K Appliance Plug
 - L Adaptor
 - M Cleaning Brush
 - N Trimming Comb
 - O Contour-following Trimming Comb
- Full Two-Year Warranty
45-Day Money-Back Guarantee

Turbo Power

- ▶ When greater suction power and increased cutting speed is desired while trimming, simply press the Turbo Power Button (fig. 4).
- ▶ The Turbo Power Button can only be activated when the trimmer is turned ON.
- ▶ When the trimmer is turned OFF, the Turbo Power is automatically deactivated.

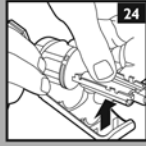
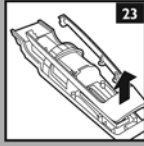
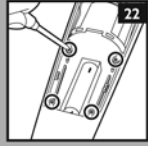
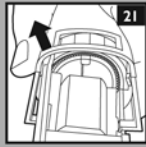
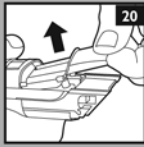
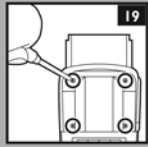
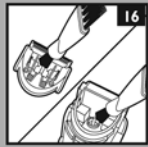
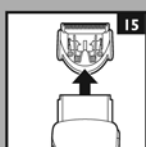
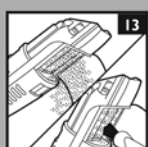
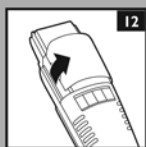
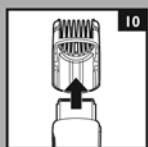
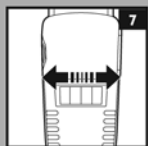
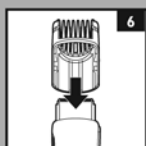
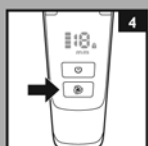
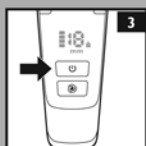
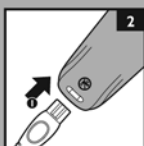
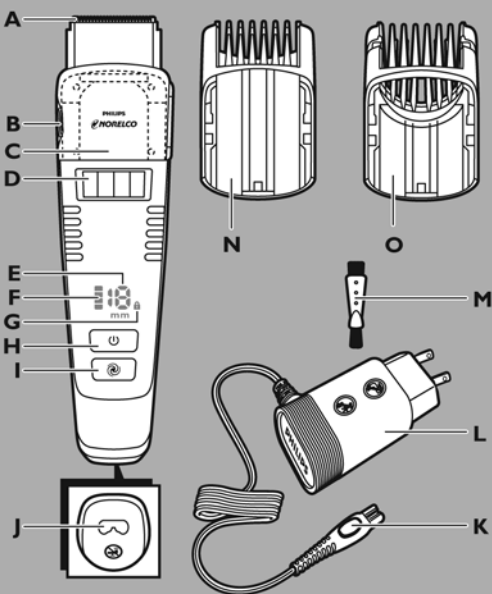
Put It To The Test

Like many new products, your Philips Norelco Vacuum Trimmer may take a little getting used to. If you are using an electric Trimmer for the first time, or if you've been using a different brand, take the time to acquaint yourself with your new Trimmer.

Your Vacuum Trimmer features innovative technology for ease of use combined with an adjustable Zoom Lock to make trimming facial hairs goofproof. Plus, the Integrated Vacuum collects cut-off hairs during use for no clean-up.

Throw your scissors away and put your new Vacuum Trimmer to the test. We guarantee precise, professional results or Philips Norelco will refund you the full purchase price as long as the request is received within 45 days of purchase.

Features



Multifunctional Display

- ▶ The display is activated when you press the ON/OFF button and when you turn the zoom lock.

During trimming, the display provides the following information (fig. 5):

- ▶ The symbol ‘-’ appears when no comb is attached to the Trimmer
- ▶ Remaining hair length after trimming in millimeters
- ▶ Remaining charge level
- ▶ Travel lock indicator
- ▶ The symbol ‘E’ if the cutting unit is blocked

Trimming

- ▶ Use this Trimmer for its intended household use as described in this manual.
- ▶ Always comb your beard and/or moustache with a fine comb before you start trimming.
- ▶ If you are trimming for the first time, be careful. Do not move the Trimmer too fast. Make smooth and gentle movements.
- ▶ After trimming, residual hair length can vary depending on hair type.

Trimming With Trimming Comb

- ▶ The hair length settings are indicated in millimeters on the display. The settings correspond to the remaining hair length after trimming.
- ▶ The trimming combs cut hair to a length of 1/32 – 23/32 in (1-18 mm).
- ▶ For contouring and trimming longer beards, use the contour-following trimming comb.
- ▶ A trimming comb must be on Trimmer in order to use the Zoom Lock.

1 Slide the trimming comb onto the Trimmer (fig. 6).

2 Turn the Zoom Lock (fig. 7) to the desired hair trimming length setting (see table). The display shows the selected hair length.

▶ If you are trimming for the first time, start by using the maximum trimming length setting of 23/32 in. (18mm) to prevent accidentally trimming hairs too short. As you become familiar with the settings, adjust Zoom Lock to desired trimming length.

3 Turn the Trimmer ON (fig. 4).

4 To trim in the most effective way, move the Trimmer against the direction of hair growth. Do not move the trimmer too fast. Make smooth and gentle movements and make sure the surface of the trimming comb always stays in contact with the skin (fig. 8).

NOTE: Since all hairs do not grow in the same direction, you may want to try different trimming positions (i.e., upwards, downwards, or across). Practice is best for optimum results.

5 You can use the turbo function for extra suction power and trimming speed (see section ‘Turbo Power’).

6 Turn the Trimmer OFF.

7 Clean the Trimmer (see section ‘Cleaning’).

Trimming Length Settings Table

Hair Length (mm)	Hair Length (in.)
1 Stubble Length	1/32
3	1/8
6	1/4
9	3/8
12	15/32
15	5/8
18	23/32

Trimming For 'Stubble' Look

- 1 Use the Trimmer with the trimming comb set to a hair length of 1/32 in. (1mm) to create a 'stubble' look (fig.9).

If you want even shorter stubble, use the Trimmer without the trimming comb attached.

Trimming Without Trimming Comb

Remove trimming comb if you are:

- ▶ Defining hair lines
- ▶ Trimming nape of neck or full beards
- ▶ Removing single, unwanted hairs

- 1 Be certain Trimmer is in the OFF position.
- 2 Remove the trimming comb by pulling it off the Trimmer (fig. 10).
- 3 Turn the Trimmer ON.
- 4 Make well-controlled movements. Touch the hair lightly with the Trimmer.

Replacing Guide Comb Attachment On Trimmer

- 1 Be certain Trimmer is in OFF position.
- 2 Replace Guide Comb Attachment until it 'clicks' into position. The Guide Comb Attachment can be placed on Trimmer only one way by properly aligning it to slide into the tracks on sides of Trimmer head. If it does not fit properly, reverse it.

NOTE: The Zoom Lock can be on any setting when removing or replacing Attachment.

Travel Lock

You can lock the appliance when you are going to travel. The travel lock prevents the appliance from being switched on by accident.

Activating the travel lock

- 1 Press and hold the on/off button for at least 6 seconds.
- ▶ The display counts down from 3 to 1. Then the travel lock indicator appears on the display to indicate that the appliance is locked (Fig. 11).

Deactivating the travel lock

- 1 Press and hold the on/off button for at least 6 seconds.
- ▶ The display counts down from 3 to 1. Then the travel lock indicator disappears from the display to indicate that the appliance is unlocked (Fig. 11).

NOTE: The travel lock is deactivated automatically when you connect the appliance to the outlet.

Cleaning

- ▶ Always turn Trimmer OFF before cleaning.
- ▶ Do not use abrasive cleaning agents, scourers or aggressive liquids such as alcohol, benzene, bleach or acetone to clean the Trimmer.
- ▶ Never clean, remove or replace trimming comb with motor ON.
- ▶ Do not apply pressure to cutters.
- ▶ Do not touch cutters with hard objects as this may damage them.
- ▶ Do not use while bathing, showering or immerse the Trimmer in water or other liquids as damage to Trimmer may occur.
- ▶ Never use sharp or hard objects to clean the filter to avoid damaging it.
- ▶ If cut hairs have accumulated in the trimming comb area, turn Trimmer off, pull trimming comb off Trimmer and remove hairs by shaking and/or blowing.

Hair Collection Chamber

- 1** Turn the Trimmer OFF.
 - 2** Open the lid of the Hair Collection chamber (fig. 12).
 - 3** Remove the hairs by carefully shaking them out or by brushing them out with the cleaning brush supplied (fig. 13).
 - 4** Clean the filter inside the hair collection chamber with the cleaning brush (fig. 14).
 - 5** Close the lid of the hair collection chamber.
- ▶ When trimming extremely long, dense beards, it may be necessary to empty the Hair Collection Chamber during the trimming session in order to maintain optimal suction performance.
 - ▶ If suction performance is not as strong as usual, Hair Collection Chamber may require emptying to restore optimal performance.
 - ▶ It is recommended that the Hair Collection Chamber be emptied and cleaned out after each use.
 - ▶ Do not operate the Trimmer with the Hair Collection Chamber cover opened.

Trimmer

- 1** Make sure the Trimmer is turned OFF and disconnected from the electrical outlet.
- 2** Remove the trimming comb (fig. 10).
- 3** Remove the cutting unit (fig. 15).
- 4** Clean the cutting unit and the inside of the Trimmer with the brush supplied (fig. 16).
- 5** Put the cutting unit and the trimming comb back onto the Trimmer (fig. 17).

Replacing The Cutting Unit

If your cutters and filter become damaged or worn, do not continue using the Trimmer. Replace cutters and/or filter immediately.

This Trimmer has no other user-serviceable parts. For assistance call 1-800-243-3050.

Assistance

For Assistance, visit our website:

**www.philips.com/support or
call 1-800-243-3050**

Information is available 24 hours a day, 7 days a week.

Storage

- ▶ Be sure Trimmer is turned off and remove cord from outlet and Trimmer before storing in a safe, dry location where it will not be crushed, banged, or subject to damage.
- ▶ Do not wrap cord around Trimmer when storing.
- ▶ Store Cord in a safe location where it will not be cut or damaged.
- ▶ Do not place or store Trimmer where it can fall or be pulled into a tub or sink, water or other liquid.

Battery Removal

- ▶ This Philips Norelco Trimmer contains a rechargeable Lithium-Ion battery which must be disposed of properly (fig. 18).
- ▶ Battery may only be removed when Trimmer is to be discarded.
- ▶ For assistance, visit our website; www.philips.com/norelco or call toll free 1-800-243-3050.

- 1** Unplug electrical cord from outlet and Trimmer before dismantling Trimmer.
- 2** Allow the Trimmer to run until the battery is empty/depleted.
- 3** Turn Trimmer OFF.
- 4** Open the lid of the hair collection chamber (fig. 12).
- 5** Remove the 4 screws inside the hair chamber with a screwdriver (fig. 19).
- 6** Pull the hair-collection chamber out of the appliance with some force (fig. 20).
- 7** To remove the front panel, wedge a screwdriver between the front panel and the inside of the appliance (fig. 21).
- 8** Remove the 4 screws on the inside of the appliance (fig. 22).
- 9** Remove the inner panel (fig. 23).
- 10** Remove the printed circuit board with the rechargeable battery connected to it (fig. 24).
- 11** Cut the wires between the printed circuit board and the rechargeable battery.
- 12** Do not attempt to replace battery. Insulate battery ends by covering with tape and/or place battery in a small plastic bag.
- 13** Discard your Trimmer. Do not attempt to plug electrical cord into the outlet or recharge the Trimmer after the battery has been removed.
- 14** Contact your local town or city officials for battery disposal information or call 1-800-8-BATTERY or www.rbrbc.com for battery drop-off locations.

Full Two-Year Warranty

Philips Electronics North America Corporation warrants each new Philips Norelco product, Model QT4070 (except cutters and combs) against defects in materials or workmanship for a period of two years from the date of purchase, and agrees to repair or replace any defective product without charge.

IMPORTANT: This warranty does not cover damage resulting from accident, misuse or abuse, lack of reasonable care, the affixing of any attachment not provided with the product or loss of parts or subjecting the product to any but the specific voltage.* Use of unauthorized replacement parts will void this warranty.

PHILIPS ELECTRONICS NORTH AMERICA CORPORATION WILL NOT PAY FOR WARRANTY SERVICE PERFORMED BY A NON-AUTHORIZED REPAIR SERVICE AND WILL NOT REIMBURSE THE CONSUMER FOR DAMAGE RESULTING FROM WARRANTY SERVICE PERFORMED BY A NON-AUTHORIZED REPAIR SERVICE.

NO RESPONSIBILITY IS ASSUMED FOR ANY SPECIAL, INCIDENTAL OR CONSEQUENTIAL DAMAGES.

In order to obtain warranty service, simply go to www.philips.com/norelco or call 1-800-243-3050 for assistance. It is suggested that for your protection you return shipments of product by insured mail, insurance prepaid. Damage occurring during shipment is not covered by this warranty. **NOTE:** No other warranty, written or oral, is authorized by Philips Electronics North America Corporation. This warranty gives you specific legal rights, and you may also have other rights which vary from state to state. Some states do not allow the exclusion or limitation of incidental or consequential damages, so the above exclusion and limitations may not apply to you.

*Read enclosed instructions carefully.

Manufactured for:

Philips Consumer Lifestyle

A Division of Philips Electronics North America Corporation

P.O. Box 10313, Stamford, CT 06904



This symbol on the product's nameplate means it is listed by Underwriters Laboratories, Inc.

Norelco is a Registered Trademark of Philips Electronics North America Corporation.

Zoom Lock is a Trademark of Philips Electronics North America Corporation.

PHILIPS is a Registered Trademark of Koninklijke Philips Electronics N.V.

© 2011 Philips Electronics North America Corporation. All Rights Reserved.

PHILIPS

NORELCO

45-DAY MONEY-BACK GUARANTEE

If you are not fully satisfied with your Philips Norelco Trimmer, send the product back along with dated sales receipt and we'll refund you the full purchase price.

The Trimmer must be shipped prepaid by insured mail, insurance prepaid, and have the original sales receipt, indicating purchase price and the date of purchase, enclosed. We cannot be responsible for lost mail. The Trimmer must be postmarked no later than 45 days after the date of purchase. Philips Norelco reserves the right to verify the purchase price of the Trimmer and limit refunds not to exceed suggested retail price.

To obtain money-back guarantee return authorization form, call 1-800-243-3050 for assistance. Please allow 4-6 weeks for delivery of check.