

**GB For your child's safety and health WARNING!**

Always use this product with adult supervision. • Never use feeding teats as a soother. • Continuous and prolonged sucking of fluids will cause tooth decay. • Always check food temperature before feeding. • Keep all components not in use out of the reach of children.

• Before first use, clean the product. Inspect before each use and pull the feeding teat in all directions. Throw away at the first signs of damage or weakness. Do not store a feeding teat in direct sunlight or heat, or leave in disinfectant ('sterilising solution') for longer than recommended, as this may weaken the teat. • Do not place in a heated oven. • Before first use place in boiling water for 5 minutes. This is to ensure hygiene. Clean before each use. • Wash and rinse thoroughly, then sterilise using a Philips AVENT steriliser or boil for 5 minutes. • Do not warm contents in a microwave oven, as this may cause uneven heating and could scald your baby. • Dishwasher safe - food colourings may discolour components. • Do not allow child to play with small parts or walk/run while using bottles or cups. • Drinks other than milk and water, such as fruit juices and flavoured sugary drinks are not recommended. If used, they should be well diluted and only used for limited periods. • Expressed breast milk can be stored in sterilised Philips AVENT polypropylene bottles/containers in the refrigerator for up to 48 hours (not in the door) or in the freezer for up to 3 months. Never refreeze breast milk or add fresh breast milk to already frozen milk. • Do not use abrasive cleaning agents or anti-bacterial cleaners. Do not place components directly on surfaces that have been cleaned with anti-bacterial cleaners. • Excessive concentration of detergents may eventually cause plastic components to crack. Should this occur, replace immediately. • Plastic material properties may be affected by sterilising and high temperatures. This can affect the fit of the cap.

**Cleaning** Before first use, disassemble all parts, clean and sterilise the product. After every use, take all items apart, wash in warm soapy water and rinse thoroughly. Make sure that you wash your hands thoroughly and that the surfaces are clean before contact with sterilised components.

**Assembly** When you assemble the bottle, make sure you place the cap vertically onto the bottle so that the teat sits upright. To remove the cap, place your hand over the cap and your thumb in the dimple

of the cap. The teat is easier to assemble if you wriggle it upwards instead of pulling it up in a straight line. Make sure you pull the teat through until its lower part is even with the screw ring.

**Maintenance** Before first use place in boiling water for 5 minutes. • Before each use, inspect all items. Pull the feeding teat in all directions. For optimum performance, pinch and massage the number on the teat between index finger and thumb prior to a feed. Throw away at the first signs of damage or weakness. For hygiene reasons, we recommend replacing teats after 3 months. Keep teats in a dry, covered container. When not in use, do not store in sunlight or heat, or leave in disinfectant ('sterilising solution') for longer than recommended, as this may weaken the teat. Do not place in a heated oven.

**Glass Natural bottle** Glass bottles may break. Do not use metal inside the bottle to stir contents or for cleaning. This can damage the glass on the inside of the bottle. Before each use, inspect bottles for sharp edges or glass fragments inside. Do not use bottles if there are any cracks on or glass fragments in the bottle. Do not let babies drink unsupervised with this bottle.

**Compatibility** Only use Philips AVENT Natural teats with Philips AVENT Natural feeding bottles. Spare teats are available separately. Make sure you use a teat with the correct flow rate when you feed your baby. When you use an older Philips AVENT steriliser, please check on the website how to place the Natural bottle. Do not mix Classic bottle parts and teats with parts of the Natural bottle. They may not fit and could cause leakage. • The polypropylene Natural bottle is compatible with Philips AVENT breast pumps, spouts, sealing discs and cup tops. • The glass Natural bottle is compatible with Philips AVENT breast pumps and sealing discs. For safety reasons, it is not recommended to use glass Natural bottles with handles, spouts and cup tops. If the bottle falls, it may break.

**Philips AVENT**

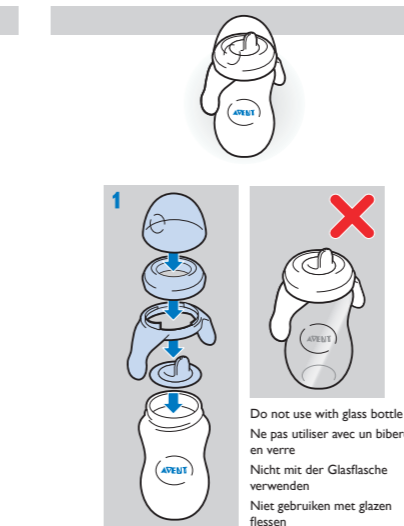
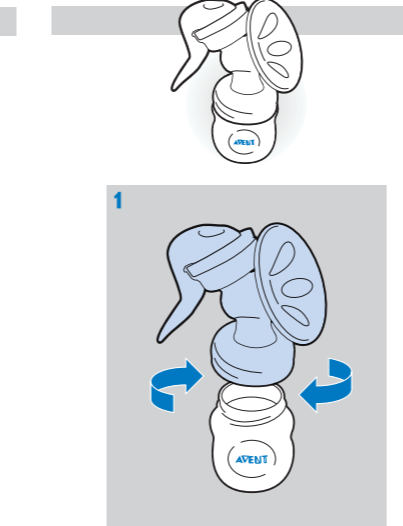
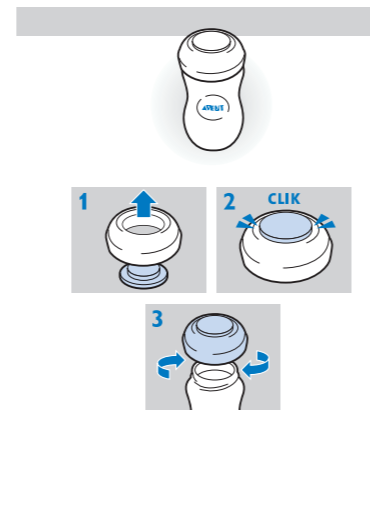
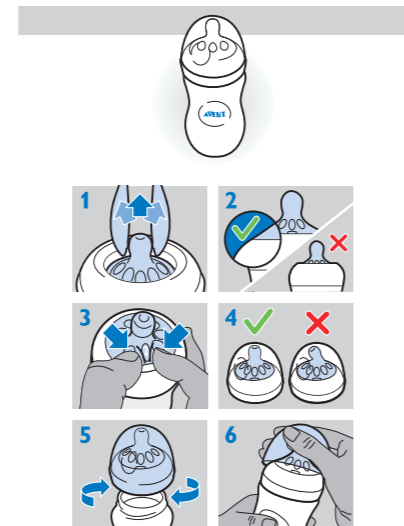
Philips AVENT is here to help:

GB: **0844 33 80 489** national call rate (mobiles vary)

IRL: **0818 21 01 41** national call rate (mobiles vary)

AU: **1300 364 474**

[www.philips.com/AVENT](http://www.philips.com/AVENT)



Do not use with glass bottle

Ne pas utiliser avec un biberon en verre

Nicht mit der Glasflasche verwenden

Niet gebruiken met glazen flessen



[www.philips.com/AVENT](http://www.philips.com/AVENT)

Philips AVENT, a business of Philips Consumer Lifestyle BV, Tussendiepen 4, 9206 AD Drachten, The Netherlands

Trademarks owned by the Philips Group. © Koninklijke Philips Electronics N.V. All Rights Reserved.



- GB** Instruction leaflet
- FR** Livret d'instructions
- DE** Anleitung
- NL** Instructiefolder

4213 354 42041 (07/13)

