



EN User manual

ZH-CN 使用手册

使用产品前请仔细阅读本使用说明书
保留备用



0844 33 80 489
5 pence/minute
(mobile rates may vary) UK only



如果需要帮助, 请联络 Philips Avent
中国大陆咨询电话: 4008 800 008

出版日期: 2017-11-21



© 2017 Koninklijke Philips N.V.
保留所有权利
4241 210 44977



English

1 Introduction

Congratulations on your purchase and welcome to Philips Avent! To fully benefit from the support that Philips Avent offers, register your product at www.philips.com/welcome.

2 Important

Read this user manual carefully before you use the appliance and save it for future reference.

Danger

- Never immerse the base, the mains cord or the mains plug in water or any other liquid.
- Failure to follow the descaling instructions may cause irreparable damage.
- Never disassemble the base to avoid the risk of electric shock.

Warning

- This appliance shall not be used by children. Keep the appliance and its cord out of reach of children.
- This appliance can be used by persons with reduced physical, sensory or mental capabilities or lack of experience and knowledge if they have been given supervision or instruction concerning use of the appliance in a safe way and understand the hazards involved.
- Children shall not play with the appliance.
- Check if the voltage indicated on the appliance corresponds to the local mains voltage before you connect the appliance.
- Only connect the appliance to an earthed wall socket, and make sure the plug is firmly inserted in the wall socket. Keep the mains cord away from hot surfaces.
- Do not use the appliance if the plug, the mains cord or the appliance itself is damaged.
- If the mains cord is damaged, it must be replaced by Philips Avent, a service center authorised by Philips Avent or similarly qualified persons in order to avoid a hazard.
- There are no serviceable parts inside the electric steam steriliser. Do not attempt to open, service or repair the electric steam steriliser by yourself.
- The appliance becomes very hot during sterilisation and may cause burns if it is touched.
- Beware of hot steam that comes out of the vent in the lid or when you remove the lid. Steam can cause burns.
- Do not touch the base, the baskets and the lid during or shortly after sterilisation to avoid getting burnt. Only lift the lid by its grip.

- Never move or open the appliance when it is in use or before it has cooled down.
- Never place items on top of the appliance when it is in use.
- Only use purified water for sterilisation.
- Only use white vinegar according to the user manual when descaling. Do not put bleach or other chemicals in the appliance.
- Only sterilise baby bottles and other items that are suitable for steam sterilisers. Check the user manual of the items you want to sterilise, to make sure they are suitable for steam sterilisers.
- To stop the sterilisation under urgent circumstances, press the power-off button, and unplug the appliance. Sterilising for a shorter period of time may affect the sterilisation efficacy.
- This appliance is intended for household use only.
- Do not use abrasive or aggressive cleaning agents (e.g. bleach) or a scouring pad to clean this appliance.

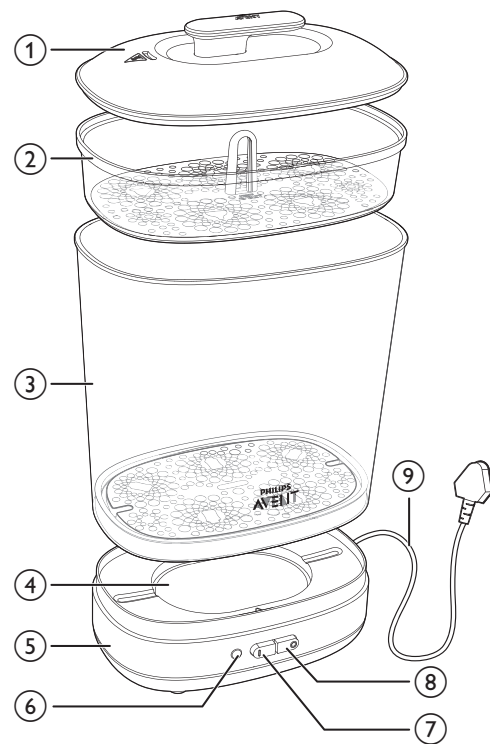
Caution

- Never use any accessories or parts from other manufacturers or that Philips Avent does not specifically recommend. If you use such accessories or parts, your guarantee becomes invalid.
- The appliance is intended to be used indoors. Do not expose it to extreme heat or direct sunlight.
- Always unplug the appliance and let it cool down before moving or storing it.
- Do not sterilise very small items which can fall through the holes in the heating plate.
- Never place items directly on the heating plate when the appliance is switched on.
- Do not use the appliance if it has fallen or is damaged in any way. Take it to an authorised Philips Avent service centre for repair.
- Always place and use the appliance on a dry, stable, level and horizontal surface.
- Do not place the appliance on a hot surface.
- Do not let the mains cord hang over the edge of the table or worktop on which the appliance stands.
- Pour any remaining water out of the appliance after use and when the appliance has cooled down.
- Always unplug the appliance after use.
- Environmental conditions, such as altitude above 2500 meters, may affect the sterilising performance of this appliance.
- Switch off the appliance and disconnect from supply before changing accessories or approaching parts that move in use.
- Cleaning and user maintenance shall not be made by children.
- Always disconnect the device from supply if it's left unattended.

Electromagnetic fields (EMF)

This Philips appliance complies with all applicable standards and regulations regarding exposure to electromagnetic fields.

3 Overview



① Lid	⑥ Power-on indicator
② Small basket	⑦ Power-on button "I"
③ Big basket	⑧ Power-off button "O"
④ Heating plate	⑨ Mains cord
⑤ Base	

Note

- The sticker above the power buttons indicates the function of each button. Remove the sticker before you start using the steriliser.

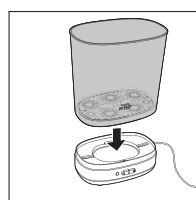
4 Before first use

When you use the appliance for the first time, we advise you to let it complete one sterilisation process with empty baskets.

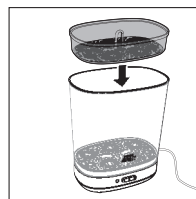
- Use a clean baby bottle and pour 90ml/3 fluid oz purified water directly into the heating plate.



- Place the big basket on the base. Adjust the position of the big basket so that it fits properly on the base.



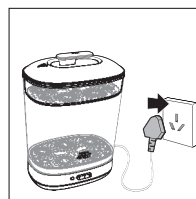
- Place the small basket in the big basket. Adjust the position of the small basket so that it fits properly in the big basket.



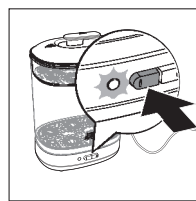
- Place the lid on top of the small basket. Adjust the position of the lid so that it fits properly on the small basket.



- Put the plug in the wall socket.



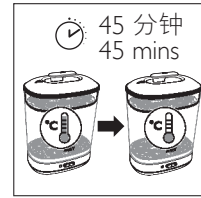
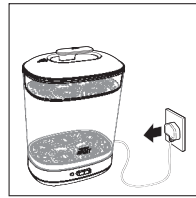
- Press the power-on button to switch on the appliance.



- The power-on indicator lights up to indicate that the appliance starts operating.
- A sterilising cycle takes around 10 minutes. When the sterilisation process is finished, the power-on indicator goes out and the appliance switches off automatically.



- Unplug the appliance. Wait until the appliance has cooled down completely, and then remove the lid, the small basket and the big basket, and wipe them dry.



Note

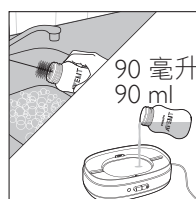
- The appliance does not work for about 10 minutes after a sterilising cycle, it needs to cool down first.

5 Using the steriliser

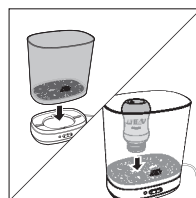
Note

- To make sure the steriliser stands stable, clip the mains cord into the cord slot in the bottom of the base.
- Only use purified water for sterilisation.
- Make sure all parts that need to be sterilised are completely disassembled and place them in the basket with their openings pointing down to prevent them from filling up with water.
- Only place items which are suitable for sterilising in the steriliser. Do not sterilise items that are filled with liquid, e.g. a teether with cooling fluid.

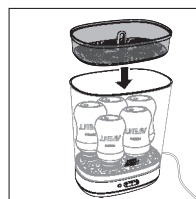
- Thoroughly clean the items to be sterilised.
- Use a clean baby bottle and pour 90ml/3 fluid oz purified water directly into the heating plate.



- Place the big basket on the base. Adjust the position of the basket so that it fits properly on the base. Then put the bottles in the basket with their openings pointing down.

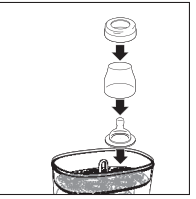


- Place the small basket in the big basket. Adjust the position of the small basket so that it fits properly in the big basket, then put the accessories in the small basket.

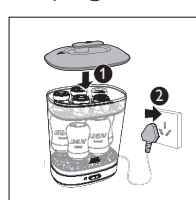


Tip

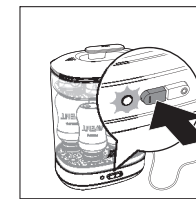
- When putting larger teats in the small basket, place the teat in the basket first, then place the dome cap on the teat, and place the screw ring on the dome cap.



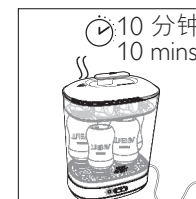
- Place the lid on top of the small basket. Adjust the position of the lid so that it fits properly on the small basket, and then put the plug in the wall socket.



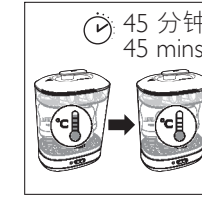
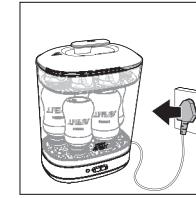
- Press the power-on button to switch on the appliance.



- The power-on indicator lights up to indicate that the appliance starts operating.
- A sterilising cycle takes around 10 minutes. When the sterilisation process is finished, the power-on indicator goes out and the appliance switches off automatically.



- Unplug the appliance. Wait until the appliance has cooled down completely, and then remove the lid and the sterilised items from the baskets.



Warning

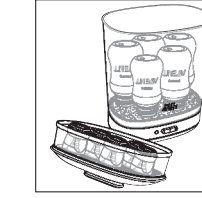
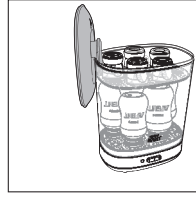
- Be careful when removing the lid, hot steam may come out of the steriliser.
- The sterilised items might be hot. Be careful not to get burnt by them.

Note

- Make sure you wash your hands thoroughly before you touch the sterilised items.

Tip

- After the appliance has cooled down, you can hang the lid on the side of the big basket. You can also place the lid on a table with the handle facing down, this way you can put the small basket on the tilted lid to keep it hygienic, and easily take out the sterilised items in the big basket.



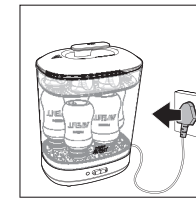
- When removing the items from the big and small baskets, you can use a Philips Avent bottle tong (sold separately).

6 Cleaning

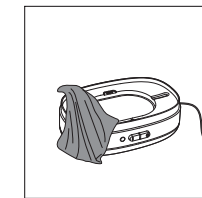
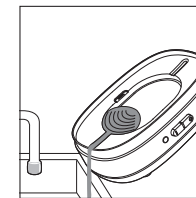
Warning

- Do not use abrasive or aggressive cleaning agents (e.g. bleach) or a scouring pad to clean this appliance.
- Never immerse the base, the mains cord or the mains plug in water or any other liquid.
- The steriliser is not dishwasher-proof.

- Always unplug the appliance after use.



- After the appliance has cooled down, pour out any remaining water from the heating plate, and then clean the surfaces around the base and heating plate with a soft cloth.



- Clean the big basket, small basket and lid under the tap with some washing-up liquid, and wipe them dry.

Note

- After cleaning, store the steriliser in a clean and dry place.

7 Descaling

When you use the steriliser, small spots may appear on the heating plate in the base. This is limescale that is building up. The harder the water, the faster limescale builds up. Descal the steriliser once each week to ensure that it continues to work effectively. The frequency of descaling depends on how much limescale is building up.

- Pour 60ml/2 fluid oz of water and 30ml/1 fluid oz of white vinegar (6-8% acetic acid) into the heating plate.
- Leave the solution in the heating plate until the limescale has resolved. The process takes about 20 minutes, but should not be longer than 1 hour.
- Empty the heating plate, thoroughly rinse it and wipe it with a soft cloth.

Note

- When descaling, do not put the plug in the wall socket.
- After descaling, store the steriliser in a clean and dry place.

8 Recycling

Do not throw away the product with the normal household waste at the end of its life, but hand it in at an official collection point for recycling. By doing this, you help to preserve the environment.

9 Guarantee and service

Philips Consumer Lifestyle guarantees its products under correct usage for a period of two years after the date of purchase. If any defect due to faulty materials and workmanship occurs within this two-year guarantee period, Philips Consumer Lifestyle will repair or replace the product at its expense. For repair or replacement, make sure to provide convincing proof, for instance by means of a receipt, that the day on which service is claimed is within the guarantee period.

The guarantee only covers the base and its electrical components. It does not cover non-electrical parts, accessories and consumable parts. The guarantee does not cover shipping and handling fees, and on-site services fees either.

If you need service or information, or if you have a problem, please contact the Philips Avent Service Center in your country.

Website: http://www.philips.com/support

10 Troubleshooting

This chapter lists the questions most frequently asked about the appliance. If you cannot find the answer to your question, contact the Consumer Care Center in your country.

Question	Solution
Why does water flow out of the steriliser?	<ul style="list-style-type: none">You may have poured too much water into the steriliser. Do not pour more than 90ml water into the heating plate. The steriliser may not be stably positioned. Make sure the mains cord is well fitted inside of the cord slot in the bottom of the base.
Why are there white spots on the heating plate, the baskets or the lid?	<ul style="list-style-type: none">Limescale build-up is normal and occurs more quickly in hard water areas. Descale the appliance regularly (see chapter ‘Descaling’).
Why does a lot of steam escape from under the lid?	<ul style="list-style-type: none">Check if the lid has been placed on the small basket properly.
Why does the sterilisation process take so long?	<ul style="list-style-type: none">To sterilise the items thoroughly, the default sterilising time is around 10 minutes (when 90ml purified water is poured into the heating plate). You may have poured too much water into the steriliser (see chapter ‘Using the steriliser’). The amount of water in the steriliser and the number of items placed in the baskets determine the actual sterilising time.
Why is the sterilisation process so short?	<ul style="list-style-type: none">You may have poured too little water into the steriliser (see chapter ‘Using the steriliser’).
Why does the appliance start to heat up, and the power-on indicator lights up immediately when I plug it in?	<ul style="list-style-type: none">When you press the power-on button before you put the plug in the wall socket, the steriliser starts operating immediately when you plug it in. Do not touch the heating plate as it starts heating up immediately. You can press the power-off button to stop the heating process.
Why can't I restart the appliance?	<ul style="list-style-type: none">After a sterilising cycle, the appliance does not work before it has cooled down. Wait for around 10 minutes before you switch on the appliance again.

简体中文

1 简介

感谢您的惠顾，欢迎光临飞利浦新安怡！为了您能充分享受飞利浦新安怡提供的支持，请在 www.philips.com.cn/welcome 上注册您的产品。

2 重要事项

为便于您正确操作本产品,使用产品前请仔细阅读本使用说明书,并保留备用。

危险

- 请勿将底座、电源线或电源插头浸入水或任何其它液体中。**
- 未遵循除垢说明可能造成不可挽回的损坏。**
- 切勿拆卸底座，以免触电。**

警告

- 儿童不应使用本产品。请把器具和它的电源线放置在儿童无法接触到的地方。
- 如果能获得有关器具安全使用方法的监督或者指导，并明白涉及到的危险，本产品可由肢体不健全、感觉或精神上有障碍或缺乏相关经验和知识的人使用。
- 儿童不应玩耍本产品。
- 在将产品连接电源之前，请先检查产品所标电压与当地的供电电压是否相符。
- 产品的电源插头必须插入有接地的插座，且务必确保其已稳固插入。不要让电源线接触到高温的表面。
- 如果插头、电源线或产品本身受损，请勿使用本产品。
- 如果电源线损坏，为避免危险，必须由制造厂或其维修部或类似的专职人员来更换。
- 本蒸汽消毒锅内没有可维修的部件。请勿自行打开、维护或修理本蒸汽消毒锅。
- 在消毒期间本产品温度较高，如触摸，可能会引起烫伤。
- 请小心盖子蒸汽孔中冒出的热蒸汽，或取下盖子时产品内释放出的热蒸汽。蒸汽可能会导致烫伤。
- 在消毒期间或消毒后不久，请勿触摸加热盘及其周围区域、奶瓶篮、配件篮和盖子，以防烫伤。仅使用手柄取下盖子。
- 切勿在本产品正在使用、或未完全冷却时移动或打开本产品。
- 使用时，切勿将其它物品放在本产品上面。
- 请使用纯净水进行消毒。
- 除了去除水垢时按用户手册使用白醋，切勿在产品中放入漂白剂或其它化学品。
- 本产品仅适合可用于蒸汽消毒锅消毒的婴儿奶瓶和其它物品。请查阅您要消毒物品的用户手册，以确保它们适合用蒸汽消毒锅消毒。
- 如果紧急情况下您需要停止消毒过程，按下“关/O”按键，然后拔掉产品的插头。但是消毒时间过短可能影响消毒效果。
- 本产品仅限于家用。
- 切勿使用研磨性或腐蚀性清洁剂（例如漂白剂）或硬质清洁器具（例如百洁布）来清洗本产品。

注意

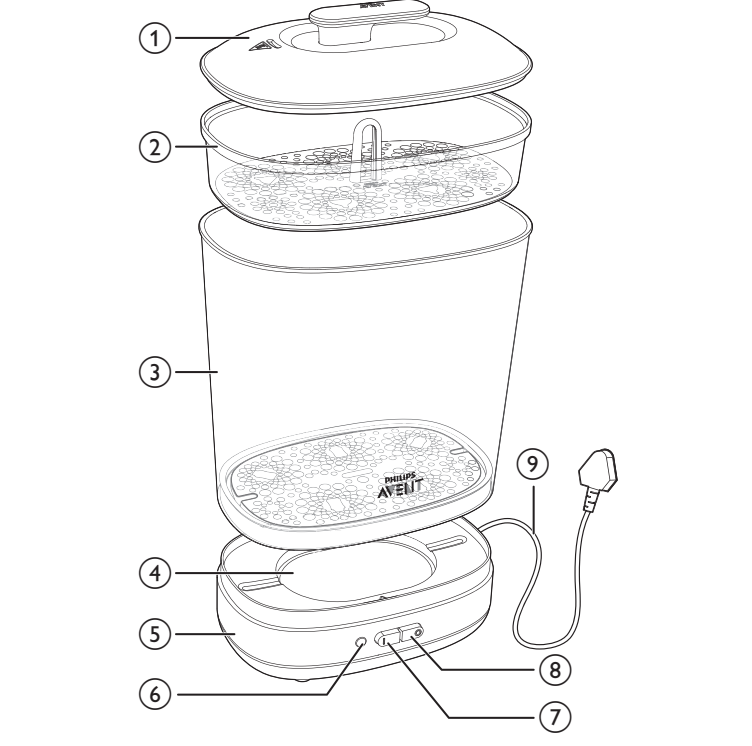
- 切勿使用其他制造商生产的或未经飞利浦新安怡特别推荐的配件或部件。如果您使用了此类配件或部件，则本产品的保修将会失效。
- 于室内使用本产品，不要将产品暴露在高温或太阳直射的地方。

- 移动或存放产品前，应先拔去电源插头并等待本产品冷却。**
- 切勿消毒非常小的物品，以防止其掉入加热盘内。**
- 本产品打开电源后，切勿将物品直接放在加热盘上。**
- 如果本产品有摔落或有任何损坏，请勿再使用。请将其送往经授权的飞利浦新安怡服务中心进行检修。**
- 一定要在干燥、稳固、平整且水平的表面上放置和使用本产品。**
- 请勿将本产品放在高温表面上。**
- 不要将电源线悬挂在放置产品的桌子或工作台的边缘上。**
- 待本产品使用完并且冷却后，请将产品中剩余的水倒出。**
- 使用后务必拔下产品的插头。**
- 环境条件（如高于 2500 米的海拔）可能影响产品的功能。**
- 更换附件或接触使用中的活动部件之前，请先关闭产品并断开电源。**
- 不要让儿童进行清洁和保养。**
- 如果无人看管，应始终将设备从电源上断开。**

电磁场

本飞利浦产品符合所有有关暴露于电磁场的适用标准和法规。

3 概述



① 盖子	⑥ 电源指示灯
② 配件篮	⑦ 开/I 按键
③ 奶瓶篮	⑧ 关/O 按键
④ 加热盘	⑨ 电源线
⑤ 底座	

注意

- 开关按键上方的贴纸标明了开和关对应的位置。首次使用前请将贴纸撕下。

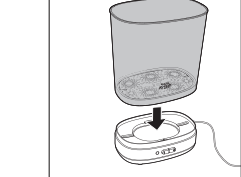
4 首次使用前

首次使用本产品之前，建议您让产品在配件篮和奶瓶篮不放有任何物品的情况下完成一次消毒过程。

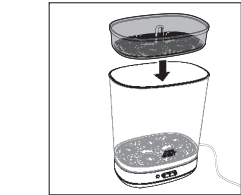
- 使用干净的婴儿奶瓶向底座加热盘上倒入 90 毫升 /3 盎司纯净水。



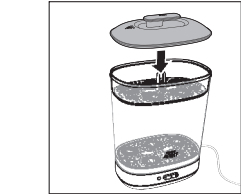
- 将奶瓶篮放在底座上，调整好使其配合到位。



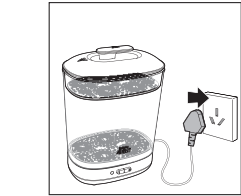
- 将配件篮放在奶瓶篮中，调整好使其配合到位。



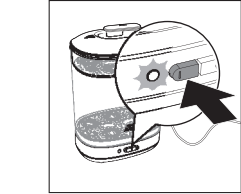
- 盖上盖子，调整好使其配合到位。



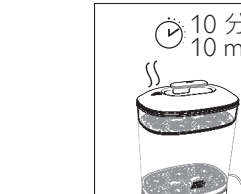
- 将电源插头接入插座。



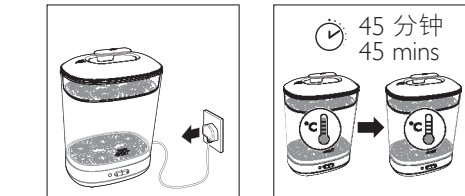
- 按“开/I”按键启动消毒锅。



- 电源指示灯亮起表示产品开始消毒。
- 一次消毒过程大约耗时 10 分钟。消毒过程完成后，本产品将自动关闭，电源指示灯熄灭。



- 拔下电源插头，等待消毒锅完全冷却，然后取下盖子、配件篮和奶瓶篮，并将它们擦干。



注意

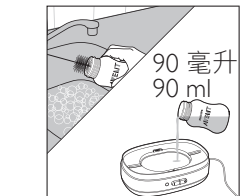
- 完成一个消毒周期后，消毒锅在 10 分钟内无法再次启动。

5 消毒锅使用方法

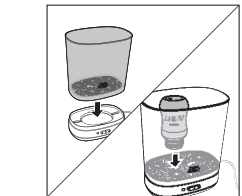
注意

- 为确保消毒锅平稳放置，请将电源线嵌入底座电源线槽中。
- 请使用纯净水进行消毒。
- 请确保完全拆卸所有需要消毒的部件，并将其放在奶瓶篮和配件篮中，开口朝下以防积水。
- 仅将适合消毒的物品放在消毒锅中。切勿消毒装满液体的物品，如装满冷却液的牙胶。

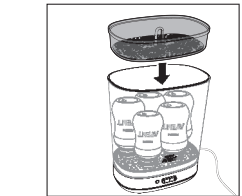
- 将待消毒的物品彻底清洗干净。
- 使用干净的婴儿奶瓶向底座加热盘上倒入 90 毫升 / 3 盎司纯净水。



- 将奶瓶篮置于底座上，调整好使其配合到位，并放入待消毒物品。

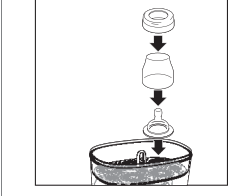


- 将配件篮放在奶瓶篮中，调整好使其配合到位，并放入待消毒物品。

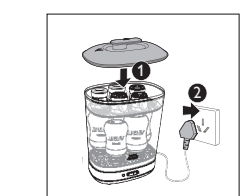


提示

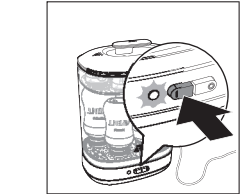
- 放入较大的奶嘴时可以将奶嘴放在底部，把奶瓶盖放在奶嘴顶部，然后将螺旋盖放在奶瓶盖上。



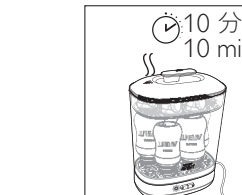
- 盖上盖子，调整好使其配合到位，然后将电源插头接入插座。



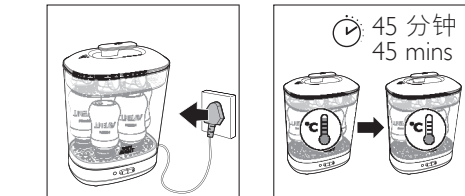
- 按“开/I”按键启动消毒锅。



- 电源指示灯亮起表示产品开始消毒。
- 一次消毒过程大约耗时 10 分钟。消毒过程完成后，本产品将自动关闭，电源指示灯熄灭。



- 拔下电源插头，等待消毒锅完全冷却，然后打开盖子，取出已消毒的物品。



警告

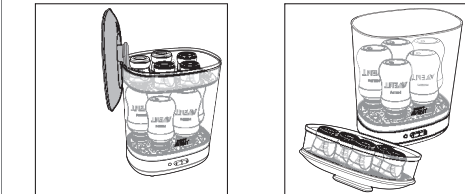
- 取下盖子时请小心，热蒸汽可能从消毒锅中冒出。
- 消毒后的物品表面温度可能仍然很高，小心处理以免被烫伤。

注意

- 接触消毒后的物品之前，请确保彻底洗净双手。

提示

- 消毒锅冷却后，可将盖子挂于奶瓶篮侧面。也可以将盖子倾斜反置在桌上，并将配件篮放置在盖子上。这样做可以保持配件篮清洁，同时方便取出奶瓶篮中的物品。



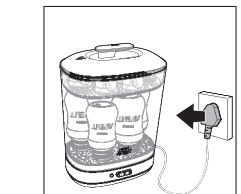
- 取出奶瓶篮和配件篮中的物品时可使用飞利浦新安怡奶瓶夹（需另行选购）。

6 清洁

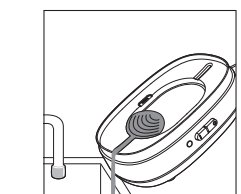
警告

- 切勿使用研磨性或腐蚀性清洁剂（例如漂白剂）或硬质清洁器具（例如百洁布）来清洗本产品。
- 请勿将底座、电源线或电源插头浸入水或任何其它液体中。
- 消毒锅不可用洗碗机清洗。

- 每次使用后须拔下产品的电源插头。



- 待产品冷却后，倒出加热盘中剩余的水，用软布擦干加热盘和底座的表面和四周。



- 用清水和少许清洗液清洁奶瓶篮、配件篮和盖子，然后擦干。

注意

- 清洁后，将消毒锅储存在清洁干燥的地方。

7 除水垢

使用消毒锅时,加热盘上会出现小点.这是沉积的水垢.水质越硬,水垢沉积越快.建议每周为消毒锅除一次水垢,保证其继续有效地工作.可根据水垢情况调整除水垢的频率.

- 向加热盘中加入 60 毫升 /2 盎司冷水和 30 毫升 /1 盎司白醋（醋酸度为 6-8%）。
- 让溶剂留在加热盘中，直至水垢完全除去。此过程大约需要 20 分钟，但不要超过 1 小时。
- 倒掉加热盘中剩余的溶剂，彻底洗净加热盘，然后用软布擦拭干净。

注意

- 除水垢时，请勿接通电源。
- 清洁后，将消毒锅储存在清洁干燥的地方。

8 回收

弃置产品时，请不要将其与一般生活垃圾堆放在一起。应将其交给官方指定的回收中心。这样做有利于环保。

产品中有害物质的名称及含量						
部件名称	有害物质					
	铅 (Pb)	汞 (Hg)	镉 (Cd)	六价铬 (Cr (VI.))	多联联苯 (PBB)	多溴二苯醚 (PBDE)
电源线	X	O	O	O	O	O

本表格依据 SJ/T 11364 的规定编制。

O：表示该有害物质在该部件所有均质材料中的含量均在 GB/T 26572 规定的限量要求以下。

X：表示该有害物质至少在该部件的某一均质材料中的含量超出 GB/T 26572 规定的限量要求。

* 该表格中所显示的“有害物质”在产品正常使用情况下不会对人身和环境产生任何伤害。

* 该表格中所显示的“有害物质”及其存在的部件向消费者和回收处理从业者提供相关物质的存在信息，有助于产品废弃时的妥善处理。

9 保修与服务

在购买日期后两年内，凡经本公司特约维修站人员确认为正常使用情况下，因制造工艺或元器件造成之损坏，您都将获得免费维修服务，维修时请出示购买发票正本。

此保修服务仅包括底座及其电气部分不包括非电器类零件及配件、辅助装置、运输费及维修人员上门服务费。

若您需洽询相关资讯，或遇困难事项时，请联络当地飞利浦维修服务中心，或向飞利浦服务咨询热线。

中国顾客服务热线：4008 800 008（用户需承担本地通话费）。

网址：<http://www.philips.com.cn/support>

10 故障种类和处理方法

本章列出了关于本产品的最常见问题。如果您无法解决，请联系您所在国家 / 地区的客户服务中心。

问题	解决方法
为什么水会从蒸汽消毒锅流出？	您可能在蒸汽消毒锅中倒入了太多水。请勿向加热盘上倒入超过 90 毫升的水。您可能未将消毒锅摆放平稳。同时请确认电源线已嵌入底座电源线槽中。
为什么加热盘、奶瓶篮、配件篮或盖子上有白点？	水垢沉积是正常现象并且在硬水区域沉积速度更快。定期为本产品除垢（请参阅“除水垢”一章）。
为什么有许多蒸汽从盖子下面冒出？	检查盖子是否正确放置在配件篮上。
为什么消毒过程如此长？	为充分消毒，本产品预设消毒时间约为 10 分钟（加入 90 毫升纯净水时）。您可能在消毒锅中倒入了太多水（请参阅“消毒锅使用方法”一章）。加水量和放在奶瓶篮、配件篮中的物品数决定实际消毒时间。
为什么消毒过程如此短？	您可能在消毒锅中倒入的纯净水过少（请参阅“消毒锅使用方法”一章）。
将产品插入电源时，为什么产品立即开始加热，电源指示灯亮起？	如果您在将电源插头接入插座前按过“开/I”按键，消毒锅在插入电源后会立即开始运行。此时加热盘会快速升温，请勿触碰。此时可以按“关/O”按键停止加热。
为什么无法重启产品？	完成一个消毒周期后，消毒锅在温度下降之前不会运行，需要先等它冷却下来。再次启动本产品前，请等待大约 10 分钟。