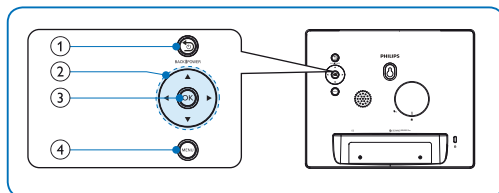
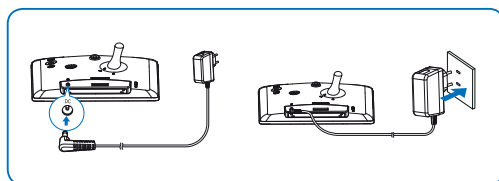
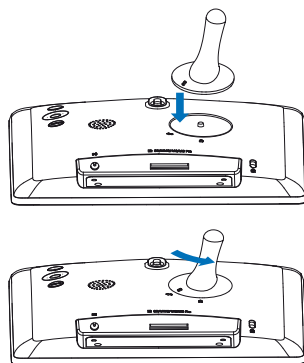
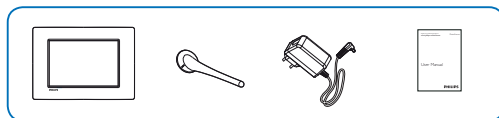




EN User manual
ZH-CN 用户手册

PHILIPS



- EN
- Hold to turn on/off the PhotoFrame
Press to go to the home screen
Press to go back
 - Press to select the upper/lower/right/left option
 - Press to play/pause slideshow
Press to confirm a selection
 - Press to enter/exit a menu

- ZH
- 按住打开/关闭数码相框
按住进入主屏幕
按下返回
 - 按下选择向上/向下/向右/向左选项
 - 按下播放/暂停幻灯片放映
按下确认选择
 - 按下进入/退出菜单



EN

Adjust settings

- In the home menu, press ◀/▶ to select [Settings], and then press OK.
↳ The setup menu is displayed.
- Press ▲/▼/◀/▶ to select an option and press OK to confirm.

Menu options	Function
[Language]	Select on-screen display language.
[Brightness]	Select display brightness level.
[Set Time]	Set the clock time.
[Set Date]	Set the date.
[Set Off-Time]	Set the auto-off time.
[Set On-Time]	Set the auto-on time.
[Slideshow Interval]	Select the slideshow display interval.
[Transition Effect]	Select the slideshow transition effect.
[Info]	Display the general information of the PhotoFrame.
[Default Settings]	Restore default settings.

- Press ⏪ BACK|POWER to exit.

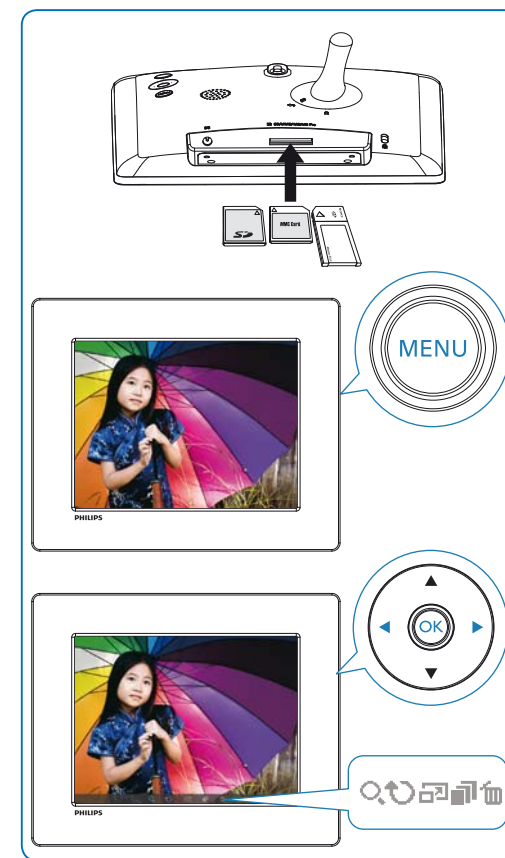
ZH

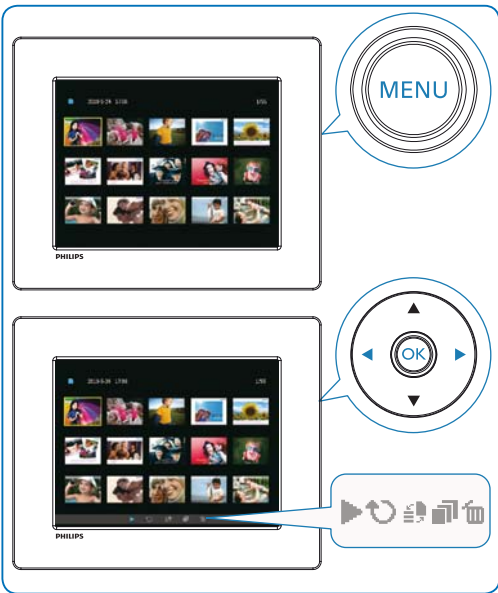
调整设置

- 在主屏幕中, 按 ◀/▶ 选择 [设置], 然后按 OK。
↳ 屏幕会显示设置菜单。
- 按 ▲/▼/◀/▶ 选择一个选项并按 OK 确认。

菜单项	功能
[语言]	选择屏幕显示语言。
[亮度]	选择屏幕亮度级别。
[设置时间]	设置时间。
[设置日期]	设置日期。
[设置关机时间]	设置自动关机时间。
[设置开机时间]	设置自动开机时间。
[幻灯片放映间隔]	选择幻灯片放映间隔。
[过渡效果]	选择幻灯片过渡效果。
[信息]	显示数码相框的一般信息。
[默认设置]	恢复默认设置。

- 按 ⏪ BACK|POWER 退出。





EN

Safety

Safety precautions and maintenance

- Never touch, push, rub or strike the screen with hard objects as this may damage the screen permanently.
- When the product is not used for long periods, unplug it.
- Before you clean the screen, unplug the power cord. Only clean the screen with a soft, water-damp cloth. Never use substances such as alcohol, chemicals or household cleaners to clean the product.
- Never place the product near naked flames or other heat sources, including direct sunlight.
- Never expose the product to rain or water. Never place liquid containers, such as vases, near the product.
- Never drop the product. When you drop the product, it will be damaged.
- Ensure that you install and use services or software only from trustworthy sources free of virus or harmful software.
- This product is designed for indoor use only.
- Only use the supplied power adaptor for the product.

Respect copyrights

The making of unauthorized copies of copy-protected material, including computer programs, files, broadcasts and sound recordings, may be an infringement of copyrights and constitute a criminal offence. This equipment should not be used for such purposes.



End of life disposal

- Your new product contains materials that can be recycled and reused. Specialized companies can recycle your product to increase the amount of reusable materials and to minimize the amount to be disposed of.
- Please find out about the local regulations on how to dispose your old monitor from your local Philips dealer.
- (For customers in Canada and U.S.A.) Dispose the old product in accordance to local-state and federal regulations. For additional information on recycling contact www.eia.org (Consumer Education Initiative).

Recycling Information for Customers

Philips establishes technically and economically viable objectives to optimize the environmental performance of the organization's product, service and activities.

From the planning, design and production stages, Philips emphasizes the importance of making products that can easily be recycled. At Philips, end-of-life management primarily entails participation in national take-back initiatives and recycling programs whenever possible, preferably in cooperation with competitors.

There is currently a system of recycling up and running in the European countries, such as The Netherlands, Belgium, Norway, Sweden and Denmark. In U.S.A., Philips Consumer Lifestyle North America has contributed funds for the Electronic Industries Alliance (EIA) Electronics Recycling Project and state recycling initiatives for end-of-life electronics products from household sources. In addition, the Northeast Recycling Council (NERC) - a multi-state non-profit organization focused on promoting recycling market development - plans to implement a recycling program. In Asia Pacific, Taiwan, the products can be taken back by Environment Protection Administration (EPA) to follow the IT product recycling management process, detail can be found in web site www.epa.gov.tw.

Environmental information

Your product is designed and manufactured with high quality materials and components, which can be recycled and reused. When you see the crossed-out wheel bin symbol attached to a product, it means the product is covered by the European Directive 2002/96/EC:

Never dispose of your product with other household waste. Please inform yourself about the local rules on the separate collection of electrical and electronic products. The correct disposal of your old product helps prevent potentially negative consequences on the environment and human health.



Banned Substance Declaration

This product complies with RoHS.

ZH

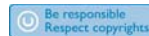
安全

安全注意事项与维护

- 切勿用硬物接触、推按、摩擦或敲击屏幕，否则可能造成屏幕永久损坏。
- 若长期不用本产品，请拔下电源插头。
- 清洁屏幕之前，请拔下电源线。仅用柔软的湿布清洁屏幕。切勿使用酒精、化学品或家用清洁剂等物质来清洁本产品。
- 切勿将本产品放置在靠近明火或其它热源的地方，包括阳光直射处。
- 切勿让本产品与雨或水接触。切勿将液体容器（如花瓶）置于产品旁边。
- 切勿让本产品跌落。跌落产品会造成损坏。
- 务必仅从不含病毒或有害软件的可靠来源安装和使用服务或软件。
- 根据设计，本产品只能在室内使用。
- 本产品只能使用随附的电源适配器。

尊重版权

进行受版权保护材料（包括计算机程序、文件、广播和录音）的未授权复制可能会侵犯版权并构成犯罪。不得将此设备用于这些目的。



废旧产品弃置

- 这款新产品包含可回收利用的材料。专业公司可回收本产品，以增加可循环使用的材料，并将废弃的材料减至最少。
 - 请就如何处理向当地 Philips 经销商的、已变旧的显示器，了解当地的规章制度。
 - （面向加拿大和美国客户）根据本州和联邦规章制度处理旧产品。
- 更多关于回收的信息，请访问 www.eia.org（消费者教育计划）。

针对客户的回收信息

Philips 设立了在技术和经济上均可行的目标，以优化公司产品、服务和活动的环保效果。

从规划、设计阶段到生产阶段，Philips 一直强调制造易回收产品的重要性。Philips 的废弃管理会尽可能参与全国回收活动和计划，而且最好与竞争对手合作。

目前，有一个回收机制已在荷兰、比利时、挪威、瑞典和丹麦等欧洲国家运行。在美国，北美 Philips 优质生活已捐献资金，用于电子工业联盟 (EIA) 电子回收计划以及针对家用废弃电子产品的州级回收活动。此外，侧重于促进回收市场发展的多州联合非盈利组织东北回收委员会 (NERC) 也打算实施回收计划。在亚太地区的中国台湾，“环保总局” (EPA) 可遵循 IT 产品回收管理流程收回这些产品，详细信息可在网站 www.epa.gov.tw 上找到。

环境信息

本产品采用可回收利用的高性能材料和组件制造而成。如果产品上贴有带叉的轮式垃圾桶符号，则表示此产品符合欧盟指令 2002/96/EC：切勿将本产品与其它生活垃圾一起处理。请自行了解当地关于分类收集电子和电气产品的规定。正确弃置旧产品有助于避免对环境 and 人类健康造成潜在的负面影响。



禁用物质声明

本产品符合 RoHS 要求。



EN For detailed instructions for use, please visit www.philips.com/support.

ZH 有关详细使用说明，请访问 www.philips.com/support.

Environmental Information

产品中有毒有害物质或元素名称及含量
Names and Contents of Toxic or Hazardous Substances or Elements

部件名称 Name of the Parts	有害物质或元素 Hazardous/Toxic Substance					
	铅 (Pb, Lead)	汞 (Hg, Mercury)	镉 (Cd, Cadmium)	六价铬 (Chromium 6+)	多溴联苯 (PBB)	多溴二苯醚 (PBDE)
Housing 外壳	0	0	0	0	0	0
LCD Panel 液晶面板	X	X	0	0	0	0
PWBs 电路板组件	X	0	0	0	0	0
Accessories (Remote control & cables) 附件 (遥控器, 电源线, 连接线)	X	0	0	0	0	0

0: 表示该有毒有害物质在该部件所有均质材料中的含量均在SJ/T11363-2006标准规定的限量要求以下。
X: Indicates that this toxic or hazardous substance contained in all of the homogeneous materials for this part is below the limit requirement in SJ/T11363-2006.

X: 表示该有毒有害物质至少在该部件的某一均质材料中的含量超出SJ/T11363-2006标准规定的限量要求。
X: Indicates that this toxic or hazardous substance contained in at least one of the homogeneous materials used for this part is above the limit requirement in SJ/T11363-2006.



环保使用期限 Environmental Protection Use Period

This logo refers to the period (10 years) 电子产品信息中含有毒有害物质或元素在正常使用的条件下不会发生外泄或突变，电子信息产品用户使用该电子信息产品不会对环境污染造成严重污染或对其人身、财产造成严重损害的期限。

This logo refers to the period (10 years) during which the toxic or hazardous substances or elements contained in electronic information products will not leak or mutate so that the use of these [substances or elements] will not result in any severe environmental pollution, any bodily injury or damage to any assets.