



Philips Brilliance
LCD monitor with
PowerSensor

B Line

22 (21.5" / 54.6 cm diag.)
1920 x 1080 (Full HD)

Brilliance

221B6LPCB



Crisp images, efficient performance

with PowerSensor saves energy

The Philips PowerSensor LED display using 85% post consumer recycled plastics and PVC, BFR free housing is ideal for eco-friendly productivity

Excellent performance

- LED technology ensures natural colors
- Less eye fatigue with Flicker-free technology
- SmartImage presets for easy optimized image settings
- SmartContrast 20000000:1 for incredible rich black details

Designed for people

- SmartErgoBase enables people-friendly ergonomic adjustments
- Low bezel-to-table height for maximum reading comfort

Easy to experience

- Built-in stereo speakers for multimedia
- USB Hub with 4 ports for easy connections

Sustainable Eco-design

- PowerSensor saves up to 80% energy costs

PHILIPS

Highlights

LED technology

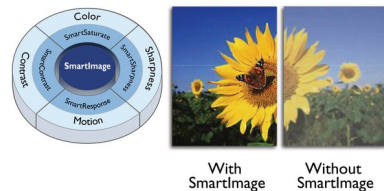
White LED's are solid state devices which light up to full, consistent brightness faster saving startup time. LED's are free from mercury content which allows for eco-friendly recycling and disposal process. LED's allow for better dimming control of LCD backlight, resulting in super high contrast ratio. It also gives superior color reproduction thanks to consistent brightness across the screen.

Flicker-free technology



Due to the way brightness is controlled on LED-backlit screens, some users experience flicker on their screen which causes eye fatigue. Philips Flicker-free Technology applies a new solution to regulate brightness and reduce flicker for more comfortable viewing.

SmartImage



SmartImage is an exclusive leading edge Philips technology that analyzes the content displayed on your screen and gives you optimized display performance. This user friendly interface allows you to select various modes like Office, Photo, Movie, Game, Economy etc., to fit the application in use. Based on the selection, SmartImage dynamically optimizes the contrast, color saturation and sharpness of images and videos for ultimate display performance. The Economy mode option offers you major power savings. All in real time with the press of a single button!

SmartContrast ratio 2000000:1



You want the LCD flat display with the highest contrast and most vibrant images. Philips advanced video processing combined with unique extreme dimming and backlight boosting technology results in vibrant images. SmartContrast will increase the contrast with excellent blacklevel and accurate rendition of dark shades and colors. It gives a bright, lifelike picture with high contrast and vibrant colors.

SmartErgoBase



The SmartErgoBase is a monitor base that delivers ergonomic display comfort and provides cable management. The base's people-friendly height, swivel, tilt and rotation angle adjustments position the monitor for maximum comfort that can ease the physical strains of a long workday; cable management reduces cable clutter and keeps the workspace neat and professional.

Low bezel-to-table height



The Philips monitor, thanks to its advanced SmartErgoBase, can be lowered down almost to desk level for a comfortable viewing angle.

Low bezel-to-table height is the perfect solution if you use bifocals, trifocals or progressive lens glasses for your computing work. Additionally, it allows for users with greatly different heights to use the monitor in their preferred angle and height settings, helping them reduce fatigue and strain.

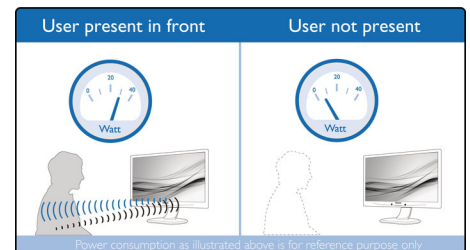
Built-in stereo speakers

A pair of high quality stereo speakers built into a display device. It can be visible front firing, or invisible down firing, top firing, rear firing, etc depending on model and design.

4 Ports USB 2.0 HUB

USB Hub allows user to conveniently connect their plug and play multimedia devices such as USB memory devices, camera, portable HDD, Web camera, PDA, Printer and many other devices which has USB connection available. The conveniently located USB 2.0 Hub on the monitor allows USB 2.0 signals to pass thru to the computer. Note that many devices like cameras and HDD may need to be powered On independently, as they have higher power requirements than the monitor USB Hub can provide.

PowerSensor



PowerSensor is a built-in 'people sensor' that transmits and receives harmless infrared signals to determine if user is present and automatically reduces monitor brightness when user steps away from the desk, cutting energy costs by up to 80 percent and prolonging monitor life



Specifications

Picture/Display

- LCD panel type: TFT-LCD
- Backlight type: W-LED system
- Panel Size: 21.5 inch / 54.6 cm
- Effective viewing area: 476.64 (H) x 268.11 (V)
- Aspect ratio: 16:9
- Optimum resolution: 1920 x 1080 @ 60Hz
- Response time (typical): 5 ms
- Brightness: 250 cd/m²
- Contrast ratio (typical): 1,000:1
- SmartContrast: 20,000,000 :1
- Pixel pitch: 0.248 x 0.248 mm
- Viewing angle: 170° (H) / 160° (V), @ C/R > 10
- Picture enhancement: SmartImage
- Display colors: 16.7 M
- Scanning Frequency: 30 - 83 kHz (H) / 56 - 76 Hz (V)
- sRGB

Connectivity

- Signal Input: DVI-D (digital, HDCP), VGA (Analog)
- USB: USB 2.0 x 4
- Sync Input: Separate Sync, Sync on Green
- Audio (In/Out): PC audio-in, Headphone out

Convenience

- Built-in Speakers: 2 W x 2
- User convenience: SmartImage, Volume, PowerSensor, Menu, Power On/Off
- Control software: SmartControl
- OSD Languages: Brazil Portuguese, Czech, Dutch, English, Finnish, French, German, Greek, Hungarian, Italian, Japanese, Korean, Polish, Portuguese, Russian, Simplified Chinese, Spanish, Swedish, Traditional Chinese, Turkish, Ukrainian
- Other convenience: Kensington lock, VESA mount (100x100mm)
- Plug & Play Compatibility: DDC/CI, Mac OS X, sRGB, Windows 10 / 8.1 / 8 / 7

Stand

- Height adjustment: 110 mm
- Pivot: 90 degree
- Swivel: -75/+75 degree
- Tilt: -5/20 degree

Power

- ECO mode: 11.01 W (typ.)
- On mode: 15.1 W (typ.) (EnergyStar 7.0 test method)

- Standby mode: < 0.3 W (typ.)
- Off mode: Zero watts with AC switch
- Power LED indicator: Operation - White, Standby mode- White (blinking)
- Power supply: Built-in, 100-240VAC, 50-60Hz

Dimensions

- Product with stand(max height): 511 x 483 x 227 mm
- Product without stand (mm): 511 x 319 x 52 mm
- Packaging in mm (WxHxD): 565 x 422 x 184 mm

Weight

- Product with stand (kg): 4.83 kg
- Product without stand (kg): 2.99 kg
- Product with packaging (kg): 6.61 kg

Operating conditions

- Temperature range (operation): 0°C to 40°C °C
- Temperature range (storage): -20°C to 60°C °C
- Relative humidity: 20%-80 %
- Altitude: Operation: +12,000ft (3,658m), Non-operation: +40,000ft (12,192m)
- MTBF: 70,000 hrs (excluded backlight) hour(s)

Sustainability

- Environmental and energy: EnergyStar 7.0, PowerSensor, EPEAT*, RoHS
- Recyclable packaging material: 100 %
- Post consumer recycled plastic: 85%
- Specific Substances: PVC / BFR free housing, Mercury free

Compliance and standards

- Regulatory Approvals: CE Mark, FCC Class B, SEMKO, cETLus, CU-EAC, TUV/GS, TUV Ergo, EPA, PSB, WEEE, RCM, UKRAINIAN, CECP, ICES-003, E-standby, J-MOSS

Cabinet

- Front bezel: Black
- Rear cover: Black
- Foot: Black
- Finish: Texture

What's in the box?

- Monitor with stand
- Cables: VGA, DVI, Audio, Power
- User Documentation



Issue date 2021-02-25

Version: 5.0.1

12 NC: 8670 001 33677
EAN: 87 12581 73704 7

© 2021 Koninklijke Philips N.V.
All Rights reserved.

Specifications are subject to change without notice.
Trademarks are the property of Koninklijke Philips N.V.
or their respective owners.

www.philips.com

* EPEAT rating is valid only where Philips registers the product. Please visit <https://www.epeat.net/> for registration status in your country.