

Philips
Curved UltraWide LCD
display

B Line

34" (86.36 cm)
3440 x 1440 (WQHD)

345B1C



See more. Do more.

The Philips B line 34" curved UltraWide display gives wrap-around view of your work. A crystalclear WQHD display and ergonomic stand design make for optimal working conditions. Eye comfort features with TUV certified to reduce eye fatigue.

Better view, better productivity

- CrystalClear images with UltraWide QHD 3440 x 1440 pixels
- VA display delivers awesome images with wide viewing angles
- MultiView enables simultaneous dual connect and view
- Effortlessly smooth action with Adaptive-Sync technology

Designed for the way you work

- DisplayPort connection for maximum visuals
- HDMI ensures universal digital connectivity
- USB 3.2 high speed data transfer
- Less eye fatigue with Flicker-free technology
- LowBlue Mode for easy on-the-eyes productivity
- EasyRead mode for a paper-like reading experience
- Tilt, swivel and height-adjust for an ideal viewing position

Designed for sustainability

- PowerSensor saves up to 70% energy costs

PHILIPS

Curved UltraWide LCD display
B Line 34" (86.36 cm), 3440 x 1440 (WQHD)

Highlights

UltraWide CrystalClear images

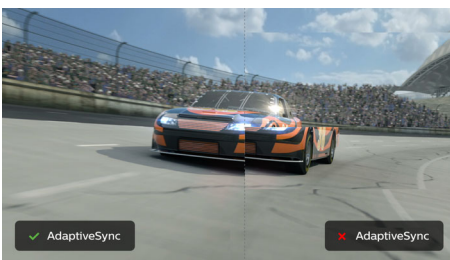


These Philips screens deliver CrystalClear, UltraWide Quad HD 3440 x 1440 pixel images. Utilizing high performance panels with high-density pixel count, 178/178 wide viewing angles, these new displays will make your images and graphics come alive. The UltraWide 21:9 format enables more productivity with more room for side-by-side comparisons and more viewable spreadsheet columns. Whether you are demanding professional requiring extremely detailed information for CAD-CAM solutions, or a financial wizard working on huge spreadsheets, Philips displays delivers CrystalClear images.

MultiView technology

With the ultra-high resolution Philips MultiView display you can now experience a world of connectivity. MultiView enables active dual connect and view so that you can work with multiple devices like a PC and notebook simultaneously, for complex multi-tasking.

Adaptive-Sync technology



Gaming shouldn't be a choice between choppy gameplay or broken frames. Get fluid, artifact-free performance at virtually any framerate with Adaptive-Sync technology, smooth quick refresh and ultra-fast response time.

HDMI Ready



HDMI-ready

An HDMI-ready device has all the required hardware to accept High-Definition Multimedia Interface (HDMI) input. A HDMI cable enables high-quality digital video and audio all transmitted over a single cable from a PC or any number of AV sources (including set-top boxes, DVD players, A/V receivers and video cameras).

Flicker-free technology



Due to the way brightness is controlled on LED-backlit screens, some users experience flicker on their screen which causes eye fatigue. Philips Flicker-free Technology applies a new solution to regulate brightness and reduce flicker for more comfortable viewing.

LowBlue Mode

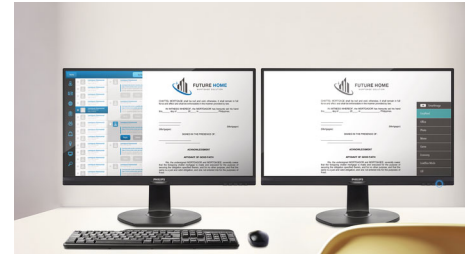


Studies have shown that just as ultra-violet rays can cause eye damage, shortwave length blue light rays from LED displays can cause eye

345B1C/00

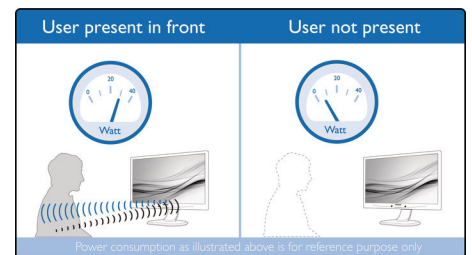
damage and affect vision over time. Developed for wellbeing, Philips LowBlue Mode setting uses a smart software technology to reduce harmful shortwave blue light.

EasyRead mode



EasyRead mode for a paper-like reading experience

PowerSensor



PowerSensor is a built-in 'people sensor' that transmits and receives harmless infrared signals to determine if user is present and automatically reduces monitor brightness when user steps away from the desk, cutting energy costs by up to 70 percent and prolonging monitor life.

LightSensor



LightSensor uses a smart sensor to adjust the picture brightness depending on the room light conditions for the perfect picture with minimal power usage.



←21:9→
Curved
UltraWide

WQHD

MultiView

Adaptive-Sync

HDMI™
HIGH DEFINITION MULTIMEDIA INTERFACE

Built-in Speaker

Flicker-free

LowBlue Mode

PowerSensor

Specifications

Picture/Display

- LCD panel type: VA LCD
- Adaptive sync
- Backlight type: W-LED system
- Panel Size: 34 inch / 86.36 cm
- Display Screen Coating: Anti-Glare, 2H, Haze 25%
- Effective viewing area: 797.2 (H) x 333.7 (V) - at a 1500 R curvature*
- Aspect ratio: 21:9
- Maximum resolution: 3440 x 1440 @ 100 Hz*
- Pixel Density: 110 PPI
- Response time (typical): 4 ms (Gray to Gray)*
- Brightness: 300 cd/m²
- Contrast ratio (typical): 3,000:1
- SmartContrast: 80,000,000 :1
- Pixel pitch: 0.23175 x 0.23175 mm
- Viewing angle: 178° (H) / 178° (V), @ C/R > 10
- Flicker-free
- Picture enhancement: SmartImage
- Display colors: 16.7 M
- Color gamut (typical): NTSC 100%*, sRGB 119%*, Adobe RGB 90%*
- Scanning Frequency: 30 - 160 kHz (H) / 48 - 100 Hz (V)
- SmartUniformity: 93 ~ 105%
- Delta E: < 2 (sRGB)
- sRGB
- LowBlue Mode
- EasyRead

Connectivity

- Signal Input: DisplayPort 1.2 x 1, HDMI 2.0 x 2
- HDCP: HDCP 1.4 (DP), HDCP 2.2 (HDMI)
- USB: USB-B x 1 (upstream), USB 3.2 x 4 (downstream with 1 fast charge B.C. 1.2)
- Audio (In/Out): Headphone out
- Sync Input: Separate Sync, Sync on Green

Convenience

- Built-in Speakers: 5 W x 2
- MultiView: PIP/PBP mode*, 2x devices
- User convenience: SmartImage, Input, User, Menu, Power On/Off
- Control software: SmartControl
- OSD Languages: Brazil Portuguese, Czech, Dutch, English, French, Finnish, German, Greek, Hungarian, Italian, Japanese, Korean, Portuguese, Polish, Russian, Simplified Chinese, Spanish, Swedish, Traditional Chinese, Turkish, Ukrainian
- Other convenience: Kensington lock, VESA mount (100x100mm)
- Plug & Play Compatibility: DDC/CI, Mac OS X, sRGB, Windows 10 / 8.1 / 8 / 7

Stand

- Height adjustment: 180 mm

- Swivel: -180/180 degree
- Tilt: -5/30 degree

Power

- ECO mode: 34 W (typ.)
- On mode: 28.36 W (typ.) (EnergyStar test method)
- Standby mode: 0.3 W (typ.)
- Off mode: Zero watts with Zero switch
- Energy Label Class: B
- Power LED indicator: Operation - White, Standby mode- White (blinking)
- Power supply: Built-in, 100-240VAC, 50-60Hz

Dimensions

- Product with stand(max height): 807 x 601 x 250 mm
- Product without stand (mm): 807 x 367 x 110 mm
- Packaging in mm (WxHxD): 930 x 525 x 282 mm

Weight

- Product with stand (kg): 11.32 kg
- Product without stand (kg): 7.62 kg
- Product with packaging (kg): 15.05 kg

Operating conditions

- Temperature range (operation): 0°C to 40°C °C
- Temperature range (storage): -20°C to 60°C °C
- Relative humidity: 20%-80 %
- Altitude: Operation: +12,000ft (3,658m), Non-operation: +40,000ft (12,192m)
- MTBF (demonstrated): 70,000 hrs (excluded backlight)

Sustainability

- Environmental and energy: PowerSensor, LightSensor, EnergyStar 8.0, TCO Certified, RoHS
- Recyclable packaging material: 100 %
- Specific Substances: Mercury free, Lead free, PVC / BFR free housing

Compliance and standards

- Regulatory Approvals: CB, EPA, cETLus, FCC Class B, ICES-003, CE Mark, TUV/GS, TUV Ergo, SEMKO, CU-EAC, UKRAINIAN

Cabinet

- Foot: Black
- Rear cover: Black
- Front bezel: Black
- Finish: Texture

What's in the box?

- Monitor with stand
- Cables: HDMI cable, DP cable, Power cable
- User Documentation



Issue date 2021-02-09

Version: 5.0.1

12 NC: 8670 001 60978
EAN: 87 12581 76077 9

© 2021 Koninklijke Philips N.V.
All Rights reserved.

Specifications are subject to change without notice.
Trademarks are the property of Koninklijke Philips N.V.
or their respective owners.

www.philips.com

* Radius of the arc of the display curvature in mm

* The maximum resolution works for either HDMI input or DP input.

* Response time value equal to SmartResponse

* NTSC Area based on CIE1976

* sRGB Area based on CIE1931

* Adobe RGB Coverage based on CIE1976

* Cannot support HDMI 1 vs HDMI 2 for PIP/PBP at the same time

* The monitor may look different from feature images.