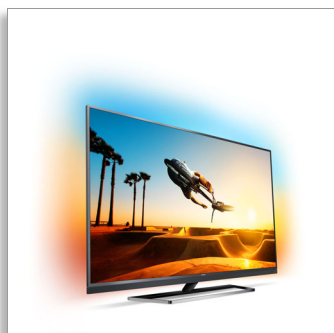




Philips 7000 series
4K Ultra-Slim TV powered
by Android TV with
Ambilight 3-sided and P5
Perfect Picture Engine

139 cm (55")

4K Ultra-HD LED TV
Quad Core, 16 GB & expandable
DVB T/C/T2/T2-HD/S/S2



55PUS7502

4K Ultra Slim LED TV powered by Android TV with Ambilight 3-sided

Big on features. Minimalistic in design. The Philips 7500 TV delivers impressive 4K Ultra-HD picture quality matched with amazing Ambilight and a built-in soundbar with woofer for a complete entertainment experience.

Crafted Lightness

- Ambilight changes the way you look at TV forever
- Lightweight aluminium dark silver chrome stand
- Finishing touches: a TV that looks as great as it performs

Award winning performance

- Picture Perfection with Philips P5 Perfect Picture Engine
- Enjoy excellent contrast, colour and sharpness with HDR Premium
- Unleashing a full spectrum of colours beyond your imagination

Exhilarating. Limitless. Powered by Android

- Unleash the power of Quad Core and integrated Android
- Google Play store and Philips app gallery: look beyond TV
- Built for a better Netflix experience

Sound never looked so good

- Visible sound articulation lets you see the beauty of sound
- Hear every detail with DTS HD Premium Sound

PHILIPS

Highlights

Ambilight 3-sided

You've created a home that's more than just a house, so why not choose a TV that is warm and inviting too? Philips' unique Ambilight technology makes your screen much wider—and your viewing experience more immersive—by emitting an extra wide glow from two-sides of your TV screen onto the surrounding wall. Colour, vibrancy and excitement move beyond the screen and into your living room to bring you a viewing experience beyond the ordinary.

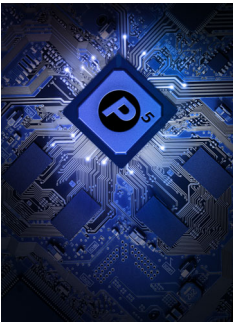
Dark silver chrome stand

Our simple yet beautiful lightweight aluminium dark silver stand is sturdy and robust and it is built to last. Furthermore, with its high-quality chrome finish, you will enjoy a premium look that fits perfectly in any setting.

Authentic materials

Your home represents your style. We chose subtle, sophisticated colours and finishes, and combined them with authentic, quality materials to create TV designs that blend seamlessly with your interior.

P5 Perfect Picture Engine



The new Philips P5 proprietary picture quality engine digitally optimises everything you view

by state-of-the-art algorithm. Thanks to a dramatically increased processing power of the P5 engine, an overall 50% picture quality performance gain is achieved. Now you'll enjoy the deepest blacks and the brightest whites, the most vivid, brilliant colours and natural, lifelike skin tones. And our most fluid, razor-sharp pictures with incredible detail and depth, in sport, movie or any other genres - every time and from any source.

High Dynamic Range Premium

High Dynamic Range Premium is a new video standard. It redefines in-home entertainment through advances in our application of contrast and colour. Enjoy a sensory experience that captures the original richness and liveliness, yet accurately reflects the director's intent. The end result? Highlights with excellent brightness, richer contrast and colour and vivid details like you've never seen before.

Premium colour

Philips Premium Color combines a wide colour gamut panel enhanced by 85% with 4 Trillion colours processing. With so much more colour resolution and brilliant saturated colours, you will forget you are looking at a screen at all.

Quad Core + Android

Philips Quad Core processor meets the power of Android to deliver an exciting gaming experience. And with Android on your TV you'll navigate, launch apps and play videos in a way that is super fast, super intuitive and super fun.

TV Content

The Google Play store and Philips app gallery go beyond traditional TV programming to bring you a big online collection of films, TV, music, apps and games. 16 GB of expandable memory means there's plenty of room to store all your favourite content and to install more apps.

Visible sound articulation

Engineered sound in a slim design. Enjoy incredible highs and lifelike mids from a plethora of micro-drivers in a sleek speaker bar. When you can hear every whisper, step and creak in the floor, it doesn't take much to imagine how powerfully clear every crash, bang and explosion sounds. And when it comes to bass, nothing has been compromised with strategically placed rear speakers for deep, rich tones. It's a TV that sounds as good as it looks.

DTS HD Premium Sound

Great TV speakers demand a powerful processing engine that preserves the purity of the original audio content. DTS HD Premium Sound is designed to deliver the experience consumers have come to expect from high-end sound processing: immersive surround with deep, rich bass and crystal-clear dialogue that is delivered at maximum volume levels and without any fluctuations, clipping or distortion.



Specifications

Ambilight

- Ambilight Version: 3 sided
- Ambilight Features: Built-in Ambilight+hue, Ambilight Music, Game Mode, Wall colour adaptive, Lounge mode

Picture/Display

- Display: 4K Ultra HD LED
- Diagonal screen size: 55 inch / 139 cm
- Panel resolution: 3840 x 2160
- Aspect ratio: 16:9
- Brightness: 400 cd/m²
- Pixel engine: P5 Perfect Picture Engine
- Picture enhancement: Perfect Natural Motion, Micro Dimming Pro, Ultra Resolution, 2200 PPI
- Peak Luminance ratio: 65 %

Android

- OS: Android™ 6.0 (Marshmallow)
- Pre-installed apps: Google Play Movies*, Google Play Music*, Google Search, YouTube
- Memory size: 16 GB, extendable via USB storage

Smart TV Features

- User Interaction: MultiRoom Client and Server, SimplyShare
- Interactive TV: HbbTV
- Programme: Pause TV, USB Recording*
- SmartTV apps*: Online Video Stores, Open Internet Browser, Social TV, TV on Demand, YouTube
- Ease of Installation: Auto detect Philips devices, Device connection wizard, Network installation wizard, Settings assistant wizard
- Ease of Use: One-stop Smart Menu button, On-screen User manual
- Firmware upgradeable: Firmware auto upgrade wizard, Firmware upgradeable via USB, Online firmware upgrade
- Screen Format Adjustments: Basic - Fill Screen, Fit to Screen, Advance - Shift, Zoom, Stretch
- Philips TV Remote app*: Apps, Channels, Control, NowOnTV, TV Guide, Video On Demand
- Remote Control: with Keyboard

Processing

- Processing Power: Quad Core

Sound

- Output power (RMS): 45 W

- Sound Features: Triple ring technology
- Sound Enhancement: Clear Sound, Smart Sound, DTS-HD Premium Sound

Connectivity

- Number of HDMI connections: 4
- Number of USBs: 2
- Number of components in (YPbPr): 1
- Wireless connections: Dual Band, Wi-Fi 11ac 2x2 integrated
- Other connections: Common Interface Plus (CI+), Digital audio out (optical), Antenna IEC75, Satellite Connector, Ethernet-LAN RJ-45, Audio L/R in, Headphone out
- HDMI features: 4K, Audio Return Channel
- EasyLink (HDMI-CEC): Remote control pass-through, System audio control, System standby, One touch play
- HDCP 2.2: Yes on HDMI1, Yes on HDMI2

Multimedia Applications

- Video Playback Formats: Containers: AVI, MKV, H264/MPEG-4 AVC, MPEG-1, MPEG-2, MPEG-4, WMV9/VC1, HEVC (H.265), VP9
- Subtitles Formats Support: .SRT, .SUB, .TXT, .SMI
- Music Playback Formats: AAC, MP3, WAV, WMA (v2 up to v9.2), WMA-PRO (v9 and v10)
- Picture Playback Formats: JPEG

Supported Display Resolution

- Computer inputs on HDMI 1/2: up to 4K UHD 3840 x 2160 @60 Hz
- Computer inputs on HDMI 3/4: up to 4K UHD 3840 x 2160 @30 Hz, up to FHD 1920 x 1080 @60 Hz
- Video inputs on HDMI 1/2: up to 4K UHD 3840 x 2160 @60 Hz
- Video inputs on HDMI 3/4: up to FHD 1920 x 1080 @60 Hz, up to 4K UHD 3840 x 2160 @30 Hz

Tuner/Reception/Transmission

- HEVC support
- Digital TV: DVB-T/T2/T2-HD/C/S/S2
- MPEG Support: MPEG2, MPEG4
- Video Playback: NTSC, PAL, SECAM
- TV Programme guide*: 8-day Electronic Programme Guide
- Signal strength indication
- Teletext: 1000-page Hypertext

Power

- Off mode power consumption: 0.3 W
- Mains power: AC 220 - 240 V 50/60 Hz
- Ambient temperature: 5°C to 35°C
- EU Energy Label power: 96 W
- Annual energy consumption: 141 kW h
- Standby power consumption: <0.3
- Power Saving Features: Auto switch-off timer, Light sensor, Picture mute (for radio)
- Energy Label Class: A
- Mercury content: 0 mg
- Presence of lead: Yes*

Dimensions

- Box dimensions (W x H x D): 1360 x 890 x 170 mm
- Set dimensions (W x H x D): 1237 x 736.79 x 42.4 mm
- Set dimensions with stand (W x H x D): 1237 x 799.26 x 225 mm
- TV stand width distance: 691.41 mm
- Product weight: 21.41 kg
- Product weight (+stand): 24.24 kg
- Weight incl. Packaging: 29.33 kg
- VESA wall mount compatible: 300 x 200 mm

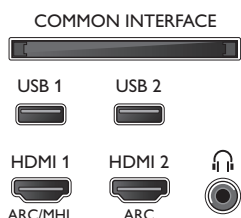
Accessories

- Included accessories: Remote Control, 2 x AA Batteries, Power cord, Mini-jack to L/R cable, Mini-jack to YPbPr cable, Quick start guide, Legal and safety brochure, Tabletop stand

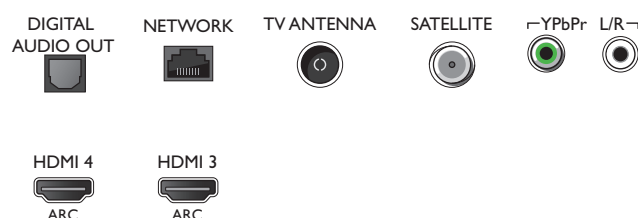


Connections

Side



Bottom



Issue date 2017-10-24

Version: 11.3.1

12 NC: 8670 001 44391
EAN: 87 18863 01157 7

© 2017 Koninklijke Philips N.V.
All Rights reserved.

Specifications are subject to change without notice.
Trademarks are the property of Koninklijke Philips N.V.
or their respective owners.

www.philips.com

* EPG and actual visibility (up to 8 days) is country- and operator-dependent.
* Android App offerings vary per country. For more details please visit your local Google Play Store.
* Energy consumption in kWh per year based on the power consumption of the television operating 4 hours per day for 365 days. The actual energy consumption will depend on how the television is used.
* Cloud Gaming offering depends on game providers.
* The TV supports DVB reception for 'Free to air' broadcast. Specific DVB operators may not be supported. An up to date list can be found in the FAQ section of the Philips support website. For some operators Conditional Access and subscription are required. Contact your operator for more information.
* (Philips) only compatible with specific Philips player device.
* Google Cast functionality is subject to Google Cast Ready apps and devices. For more details, please visit the Google Cast product page.
* Philips TV Remote app and related functionalities vary per TV model, operator and country, as well as smart device model and OS. For more details please visit: www.philips.com/TVRemoteapp.
* Smart TV app availability varies per TV model and country. For more details please visit: www.philips.com/smarttv.
* USB recording for digital channels only, recordings may be limited by broadcast copy protection (CI+). Country and channel restrictions may apply.
* This television contains lead only in certain parts or components where no technology alternatives exist in accordance with existing exemption clauses under the RoHS Directive.